

GRUNDRISS GESCHOSSWOHNUNG

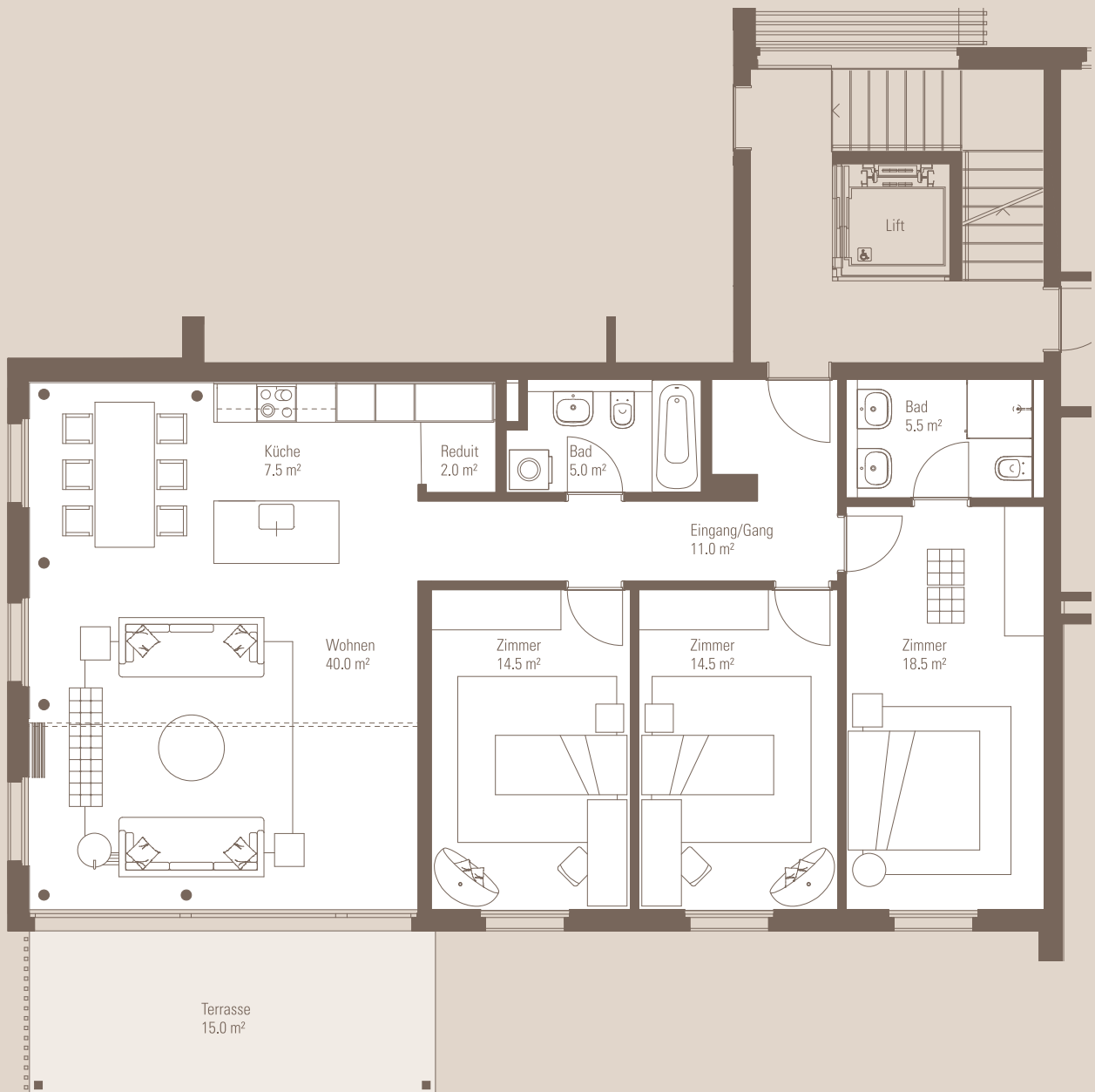
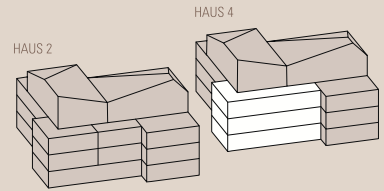
4½-ZIMMER

Haus 4 EG + 1.OG + 2.OG

HNF: 116.5 m²

Terrasse: 15.0 m²

Garten/Sitzpl. EG: 370.0 m²



0 1 2 3 4 5 m

MASSSTAB 1:100