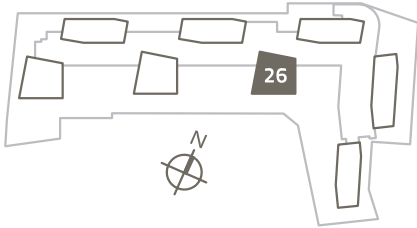


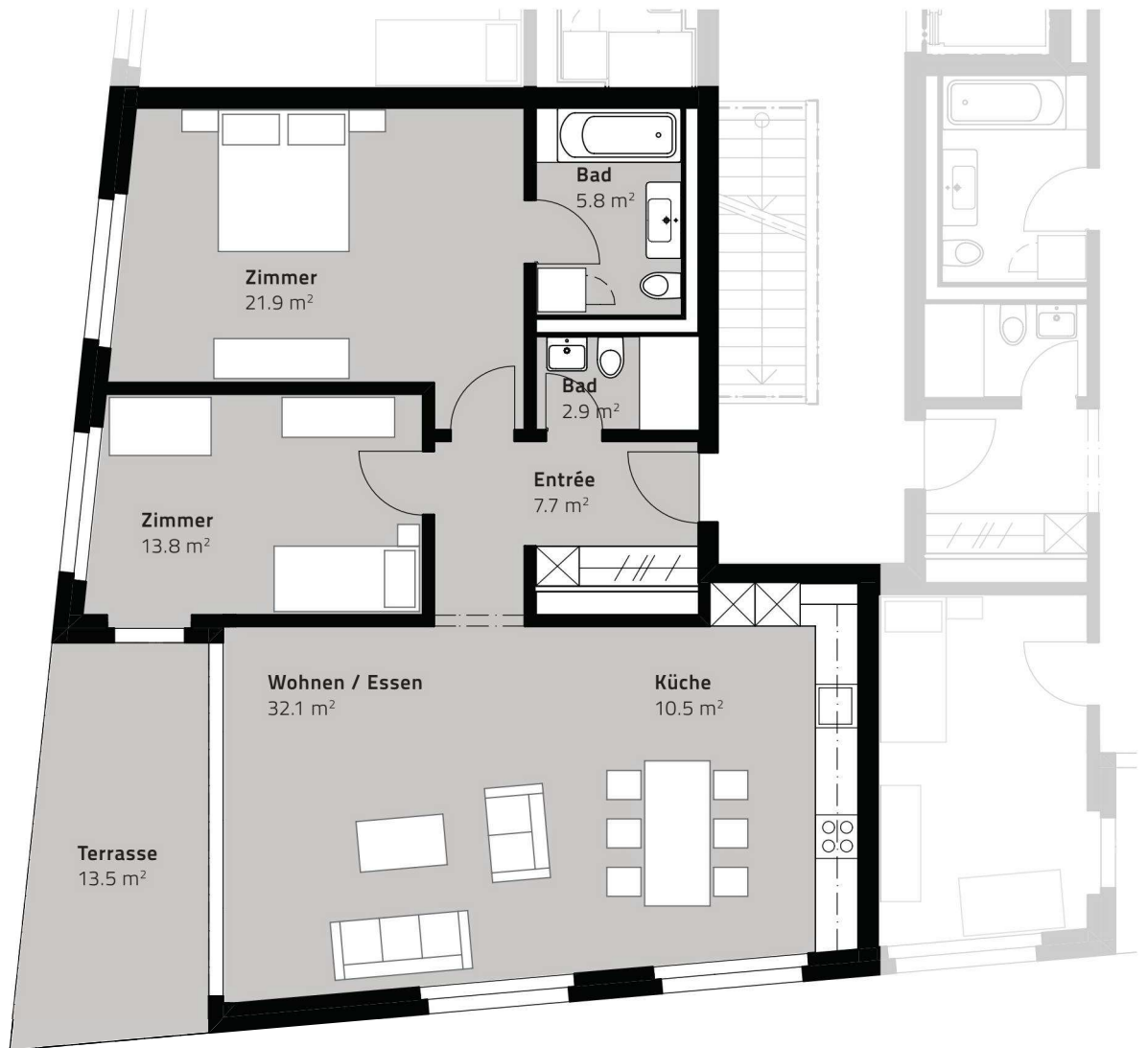
MIETEN – Haus 26



Erdgeschoss



Ansicht Süd



0 1 2 3

Massstab 1:100

3.5 ZIMMER-WOHNUNG, EG

Nettofläche: 94.8 m² / Terrasse: 13.5 m² / Keller: 10.6 m²



GOLDINGER Immobilien Treuhand AG

Hauptstrasse 14, CH-8280 Kreuzlingen, Tel. +41 (0)71 677 50 19, Fax +41 (0)71 677 50 05
katrin.braendle@goldinger.ch, monika.gertsch@goldinger.ch, www.goldinger.ch