



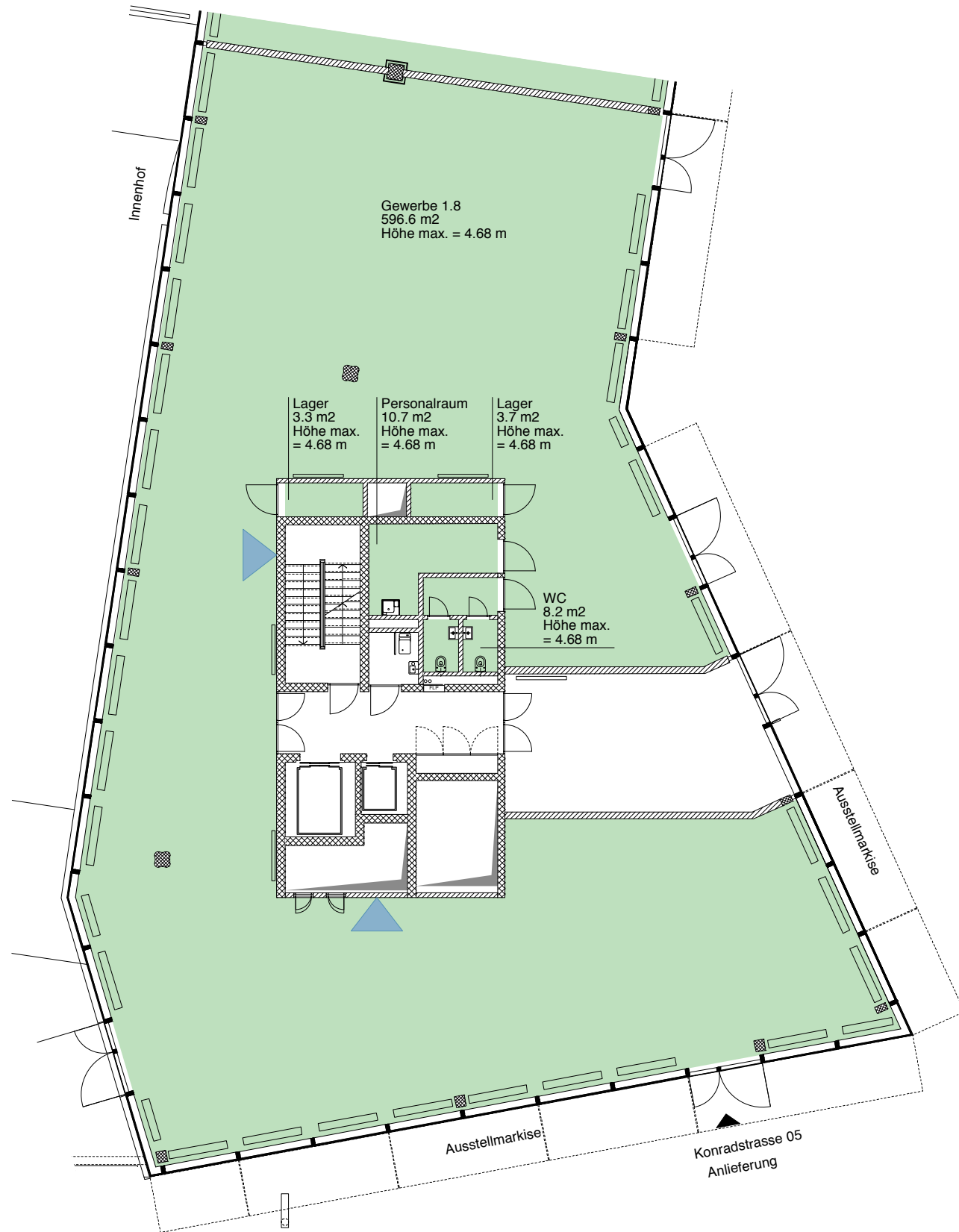


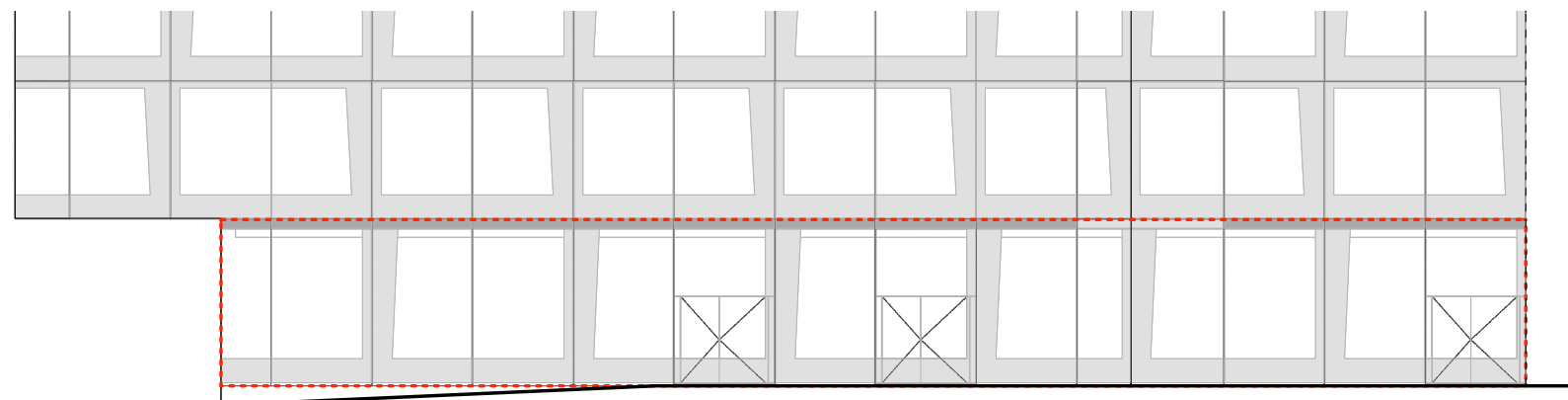


-  Anschlussstelle z.B für Teeküche
-  Gewerbe
-  Gewerbe Erschliessung/Allgemeinflächen
-  Gewerbe Lager / WC / Nebenräume

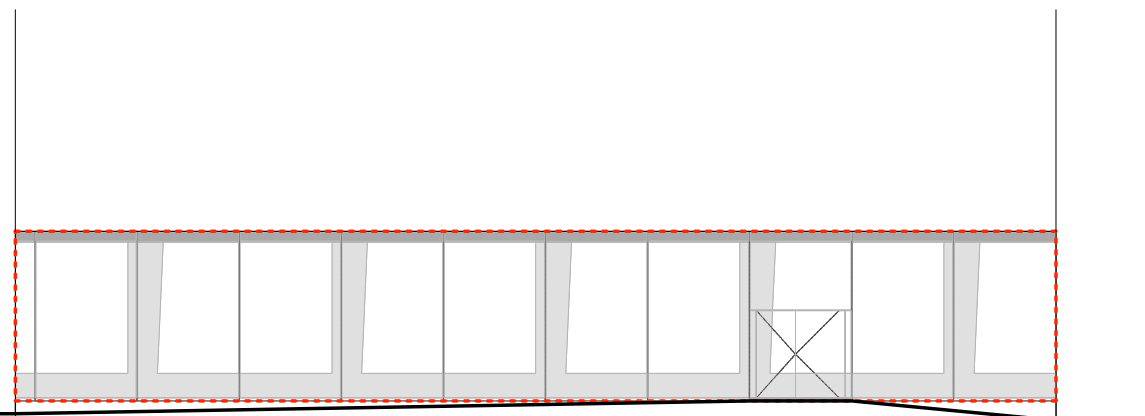


Gewerbe 1.8
Nutzfläche 622.45 m²

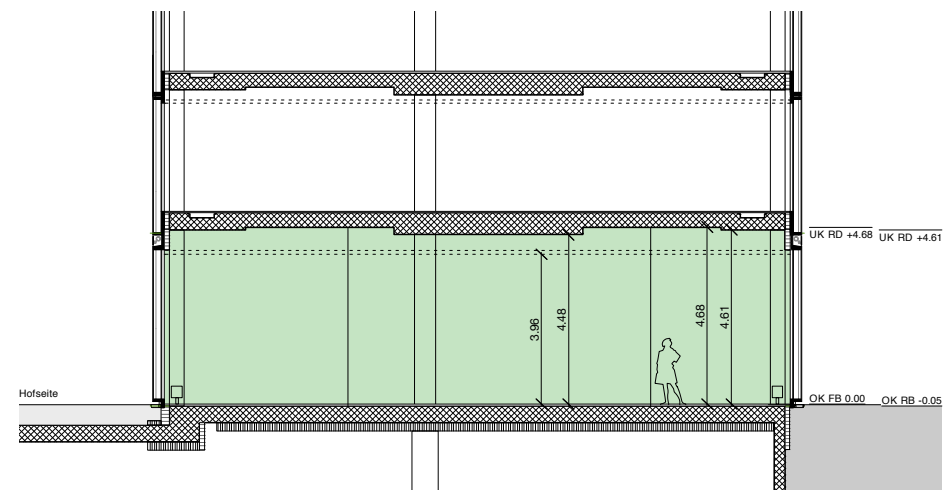
▲ Anschlussstelle z.B für Teeküche



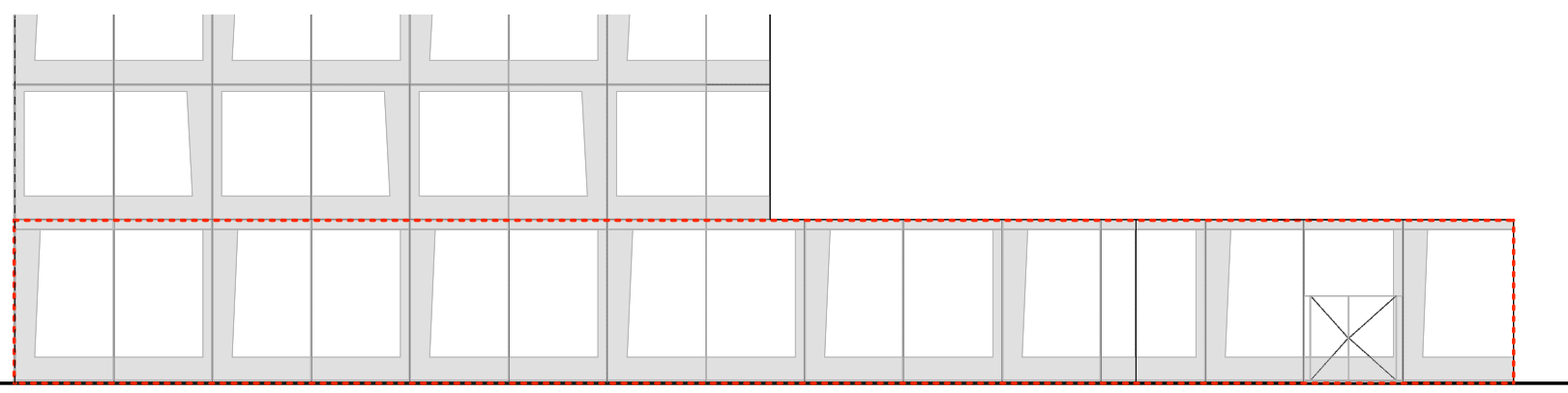
Gewerbe 1.8 Ansicht Industriestrasse



Gewerbe 1.8 Ansicht Konradstrasse



Gewerbe 1.8 Schnitt



Gewerbe 1.8 Hofansicht