

Eigentumswohnungen

# "Ziegelhof"

Schänis



W. JANTZ/92

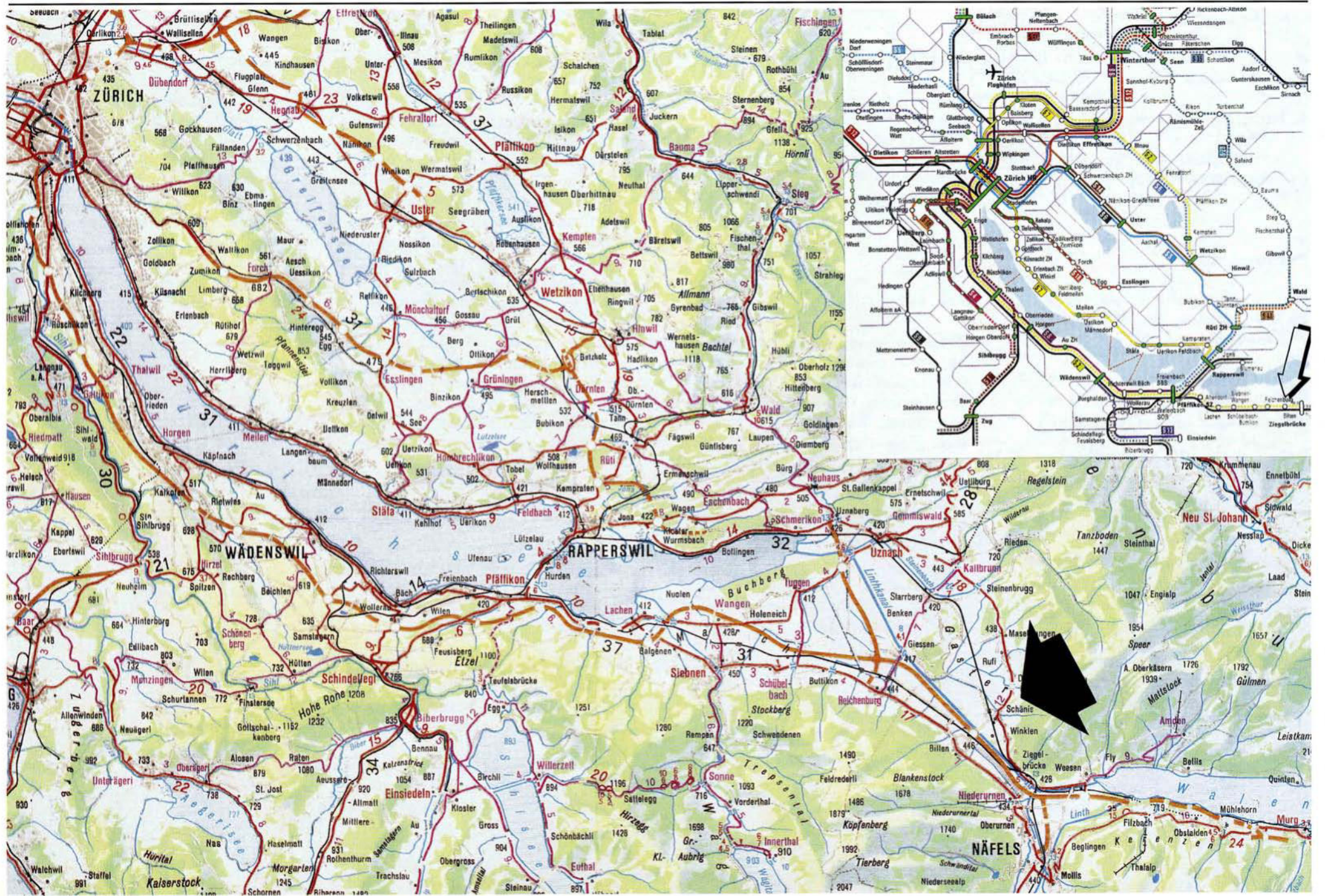


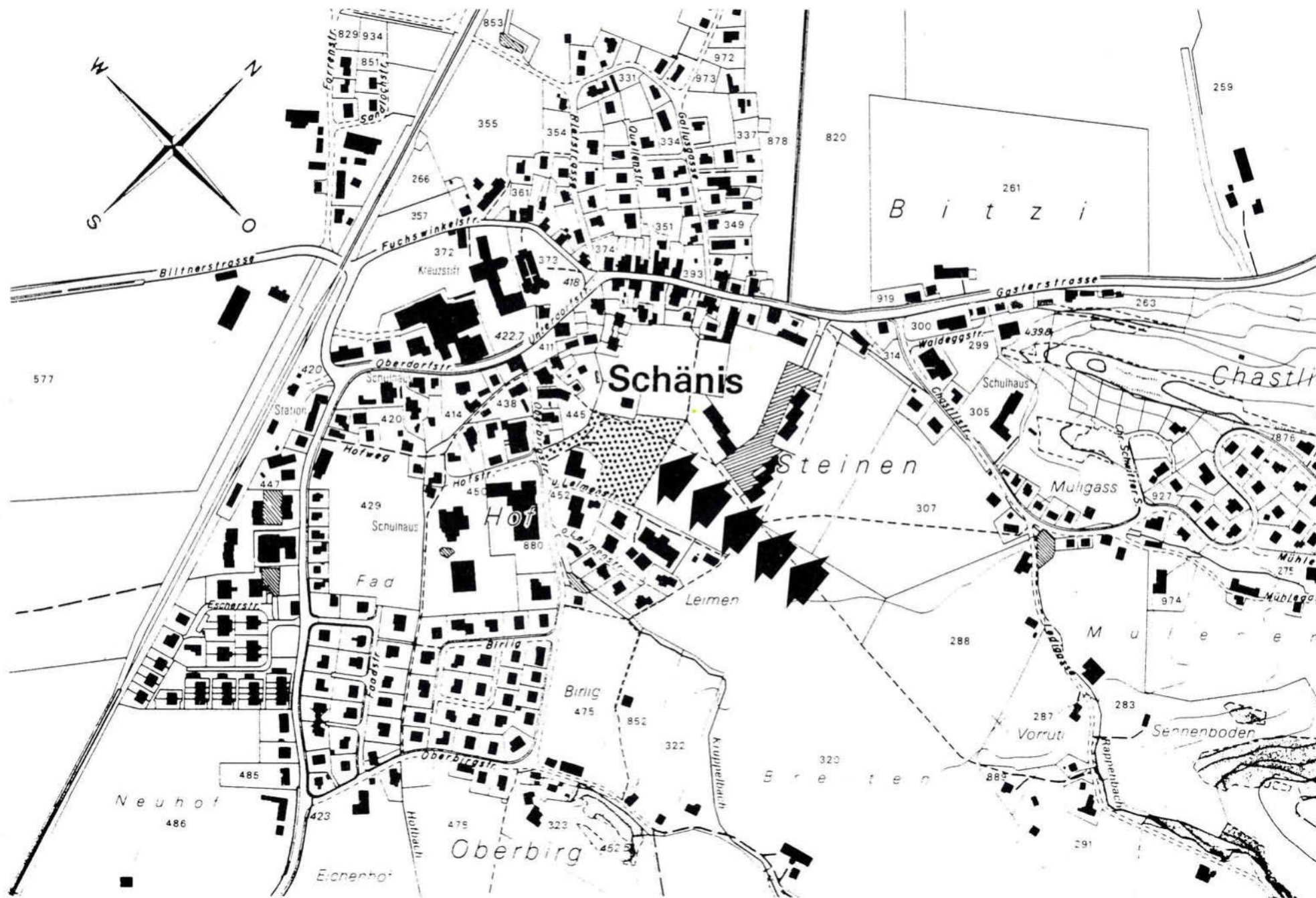




# Lage und Zugverbindungen

Eigentumswohnungen "Ziegelhof", Schänis





# Haus A / 1. Obergeschoss

Eigentumswohnungen "Ziegelhof", Schänis

**A 5**

3 1/2-Zimmer-Wohnung  
Balkon  
Wohnfläche: 65 m<sup>2</sup>

**A 6**

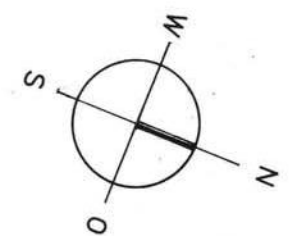
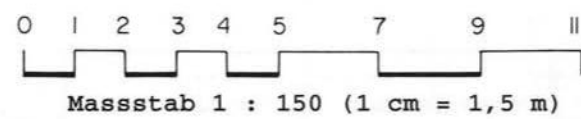
4 1/2-Zimmer-Wohnung  
gr. u. kl. Balkon  
Wohnfläche: 95 m<sup>2</sup>

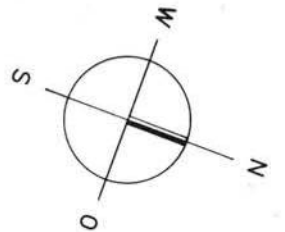
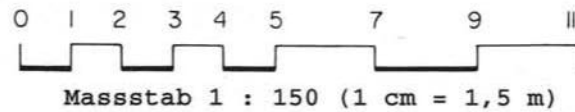
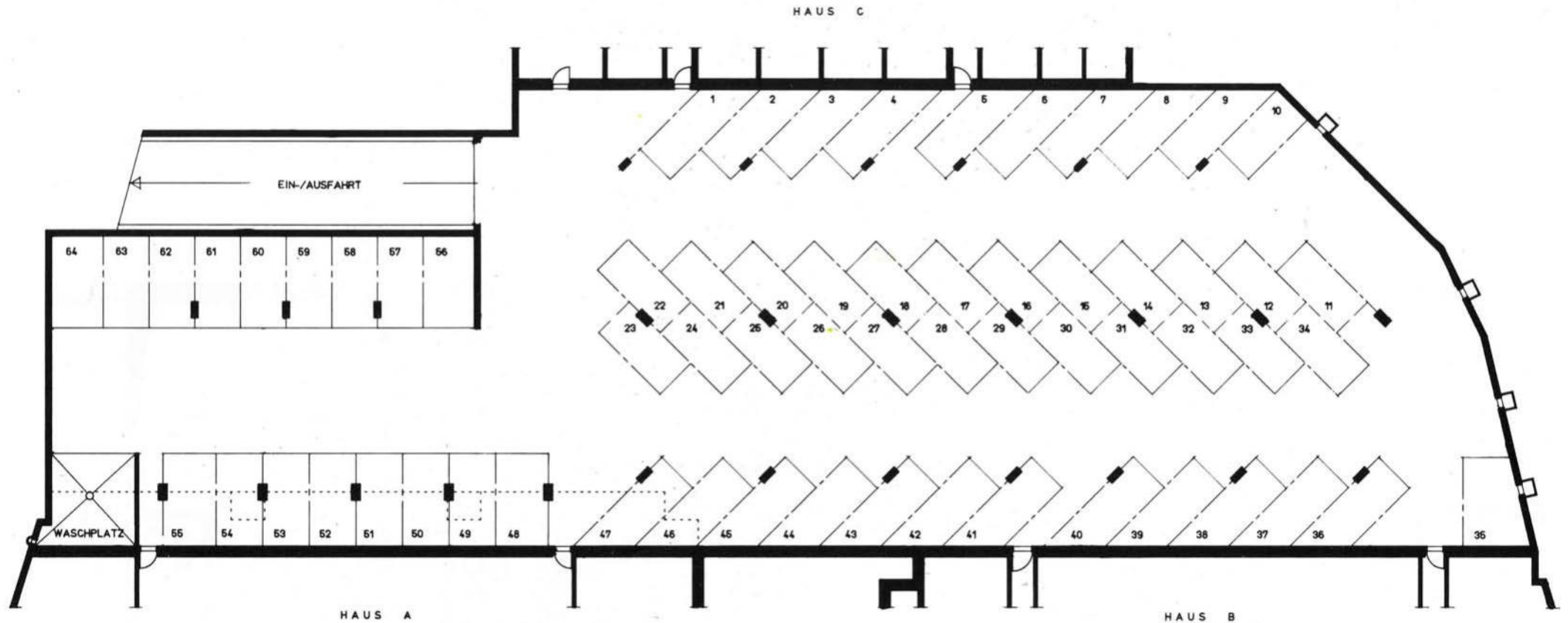
**A 7**

4 1/2-Zimmer-Wohnung  
gr. u. kl. Balkon  
Wohnfläche: 95 m<sup>2</sup>

**A 8**

3 1/2-Zimmer-Wohnung  
Balkon  
Wohnfläche: 66 m<sup>2</sup>

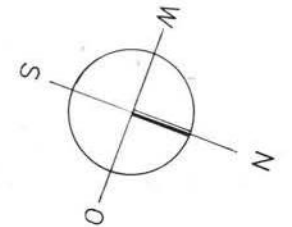
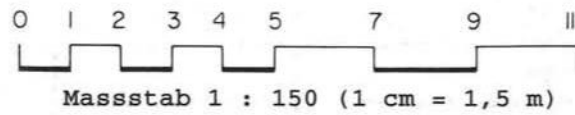
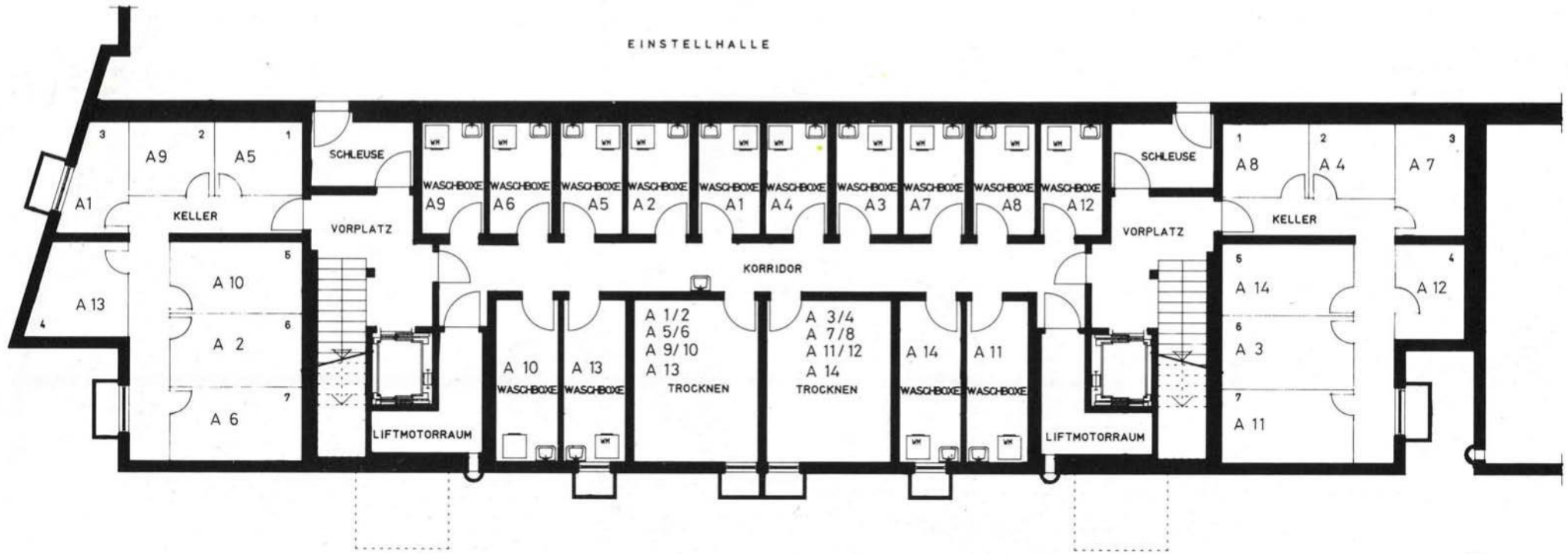






# Haus A / Untergeschoss

Eigentumswohnungen "Ziegelhof", Schänis



Ansicht Westfassade, Häuser A, B, C

Eigentumswohnungen "Ziegelhof", Schanis

