

RESIDENZA
Ascona

Appartamento **B32**

Edificio **B**

PIANO 4

PIANO 3

PIANO 2

PIANO 1

PT



Piano	3
Locali	2
Superficie	m ² 49

Annotazioni

.....

.....

.....

.....

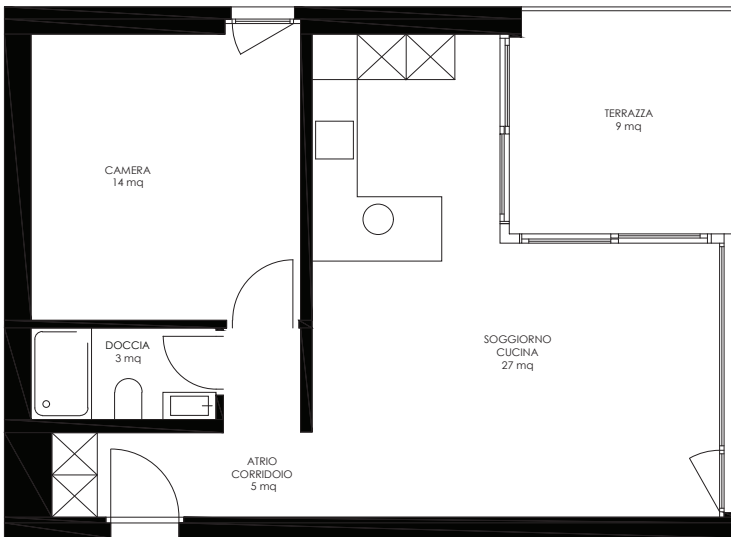
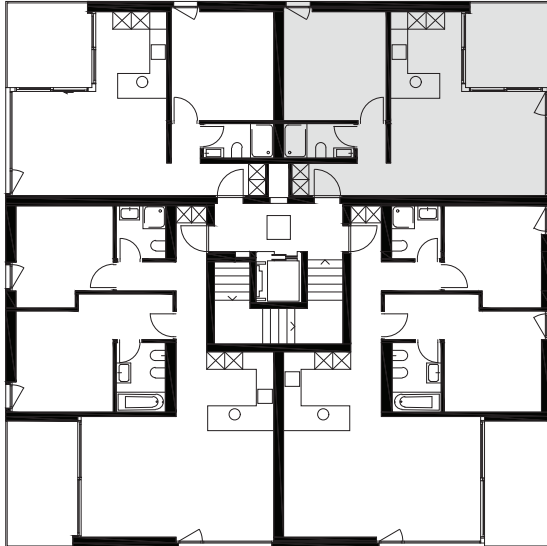
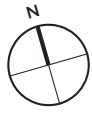
.....

.....

.....

.....

.....



SCALA 1:100



Wincasa SA
Via F. Pelli 1
6900 Lugano
www.wincasa.ch

Persona di contatto:
Signora Leila Somazzi
Tel. 058 455 77 77
leila.somazzi@wincasa.ch