

LEGENDE ELEKTRO- UND SCHWACHSTROM / LEGEND ELECTRICAL AND LOW VOLTAGE SYSTEM

VERKAUF BELEUCHTUNG / SALES AREA LIGHTING

	Stromauslass Wände / Outlet on wall	N.
	Stromauslass Wände_bestehende / Outlet on wall_existing	N.
	Schutzkontaktsteckdose Boden / Protective contact socket on floor	N. 2
	Schutzkontaktsteckdose Boden_bestehende / Protective contact socket on floor_existing	N. 1
	Key Pad	N. 1
ZENTRAL / CENTRAL PANEL		
	Unterverteiler_bestehende / Electrical distribution board_existing	N. 1
	Einbruchmeldzentrale / Anti-ringer control panel	N. 1
	Data / Rack with universal lock	N. 1
BESCHALLUNG / AUDIO SYSTEM		
	BOSE Lautsprecher Verkaufsfläche_neuen / BOSE Loudspeaker in sales area_news	N. 4

NOTIZEN:

- ① Electrical receptacle/outlet for furniture lights
- ② Electrical receptacle/outlet, 4x RJ45, 1x Telephone for POS, RFID locks, etc.
- ③ Electrical receptacle/outlet
- ④ Electrical receptacle/outlet for backlit graphic display and graphic box - to be cabled with a 5 core cable (DALI)
- ⑤ Electrical receptacle/outlet for backlit logo
- ⑥ **Back Office / Storage electrical outlets to be defined locally, depending on need.**



AT/A0410112

IND	DATUM	BESCHREIBUNG	GEZEICHNET	GEPRÜFT
A	08.10.19	Basisplan "MBC-022_Sternenplatz_Lucerne_V1R1_191010"	IM	

PROJEKT

IQOS

Sternenplatz 7
6004 Luzern - Switzerland

EIGENTÜMER

Hubschmid B+V AG

Oberdorfstr. 6a
8800 Thalwil - Switzerland

BAUHERR

Philipp Morris S.A.

Chemini de Brillancourt 4
1001 Lausanne - Schweiz

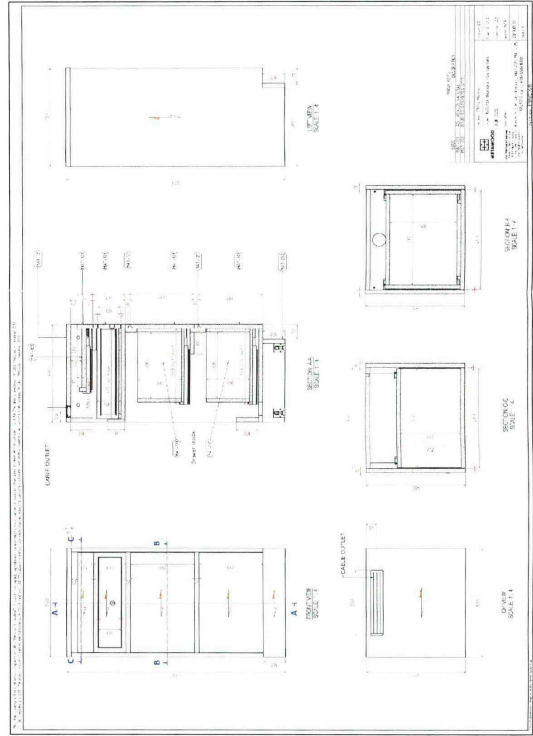
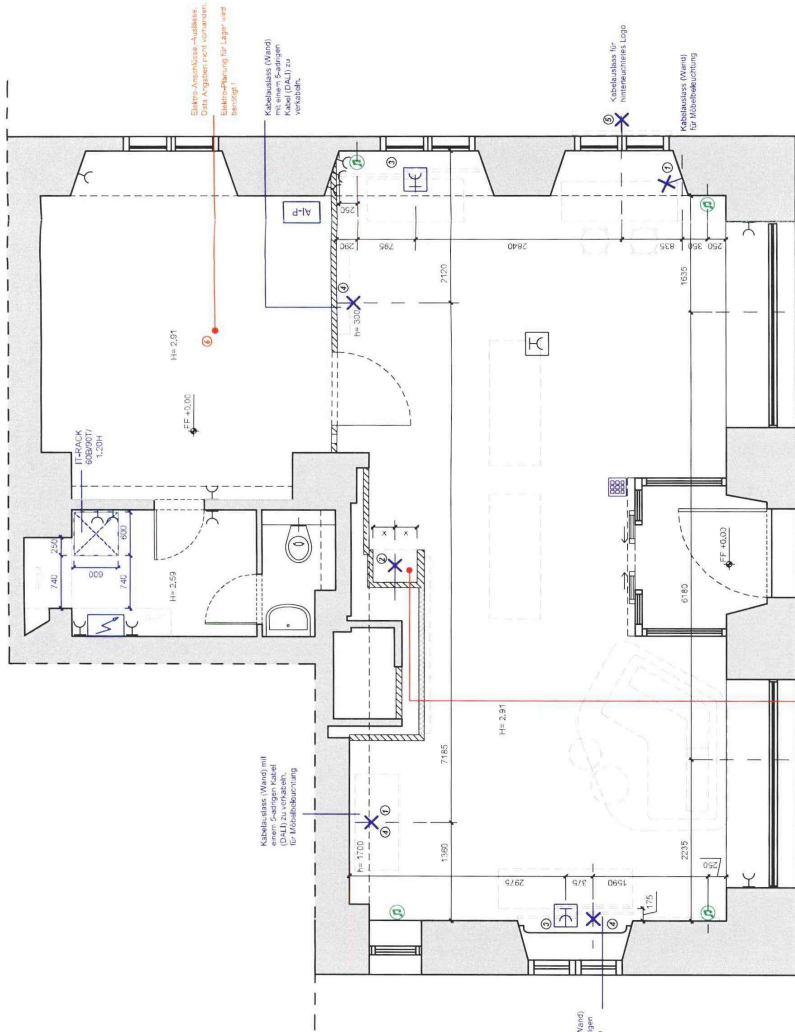
PLANUNG / MANAGEMENT



F&M Retail GmbH
Schanzenstrasse 39, D22
51063 Köln - Germany

tel.: +49 221 964 965 0
fax: +49 221 964 965 29
mail: info.de@fm-retail.com
web: www.fm-retail.com

PROJEKT N.	DESIGN	ETAGE	TITEL	INDEX
182_16	SD	EG	Boden und Wände: Elektro- und Schwachstrom	A
FORMAT	DATUM	IMSTAB	ZEICHEN	DWG DATEI NAME
A2	12.11.2019	1:50	IM	182_16_SD_PLA_GF_JEW



HARDWARE NEEDED FOR VERTICAL CASH DESK UNIT

List of hardware equipment per single sales desk:

- 1x HP Engine One (extra)
- 1x HP Engine One 2D Barcode Scanner (white) [3652DA4]
- 1x HP Standard Duty Cash Drawer [G457AA]
- 1x Epson ticket printer TM-T88V (LAN + Serial)
- 1x HP Payment terminal

