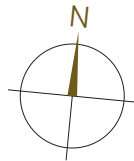


HAUS WEILER

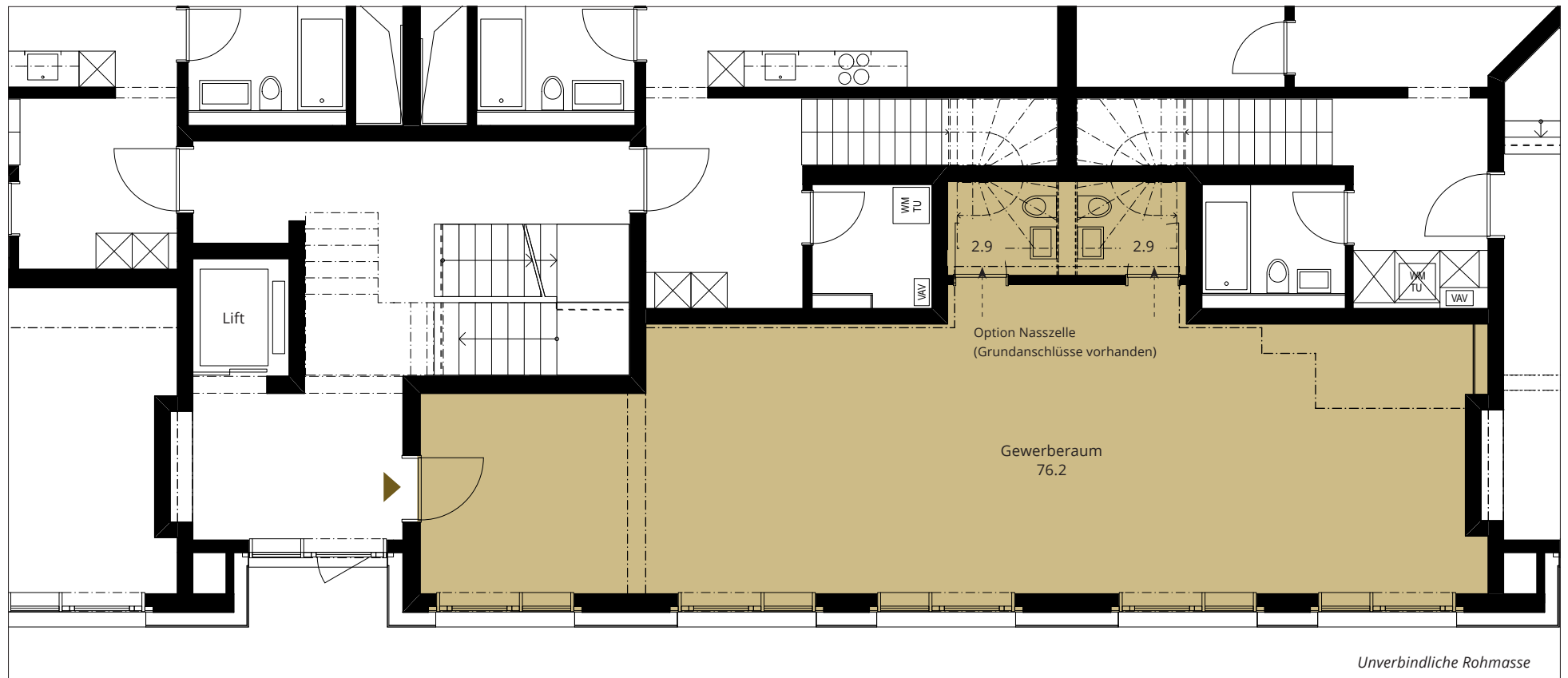
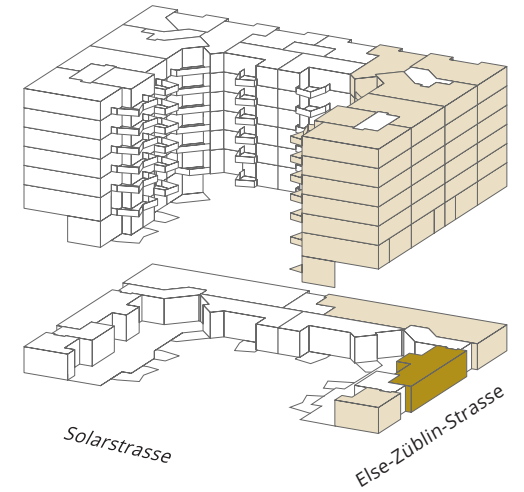
Urban. Grün. Modern. Mein Zuhause.

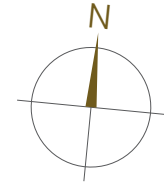
Gewerbe

Solarstrasse 23	
Stockwerk	Erdgeschoss
Gewerbe	23.G0.G01
Gewerbefläche	82.00 m ²
Raumhöhen	2.63 / 4.45 m
Lager	12.50 m ²



Massstab 1:100





Lagerräume Solarstrasse 23 und 25 | 1. Untergeschoss

