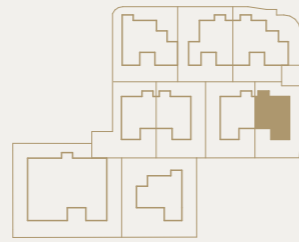
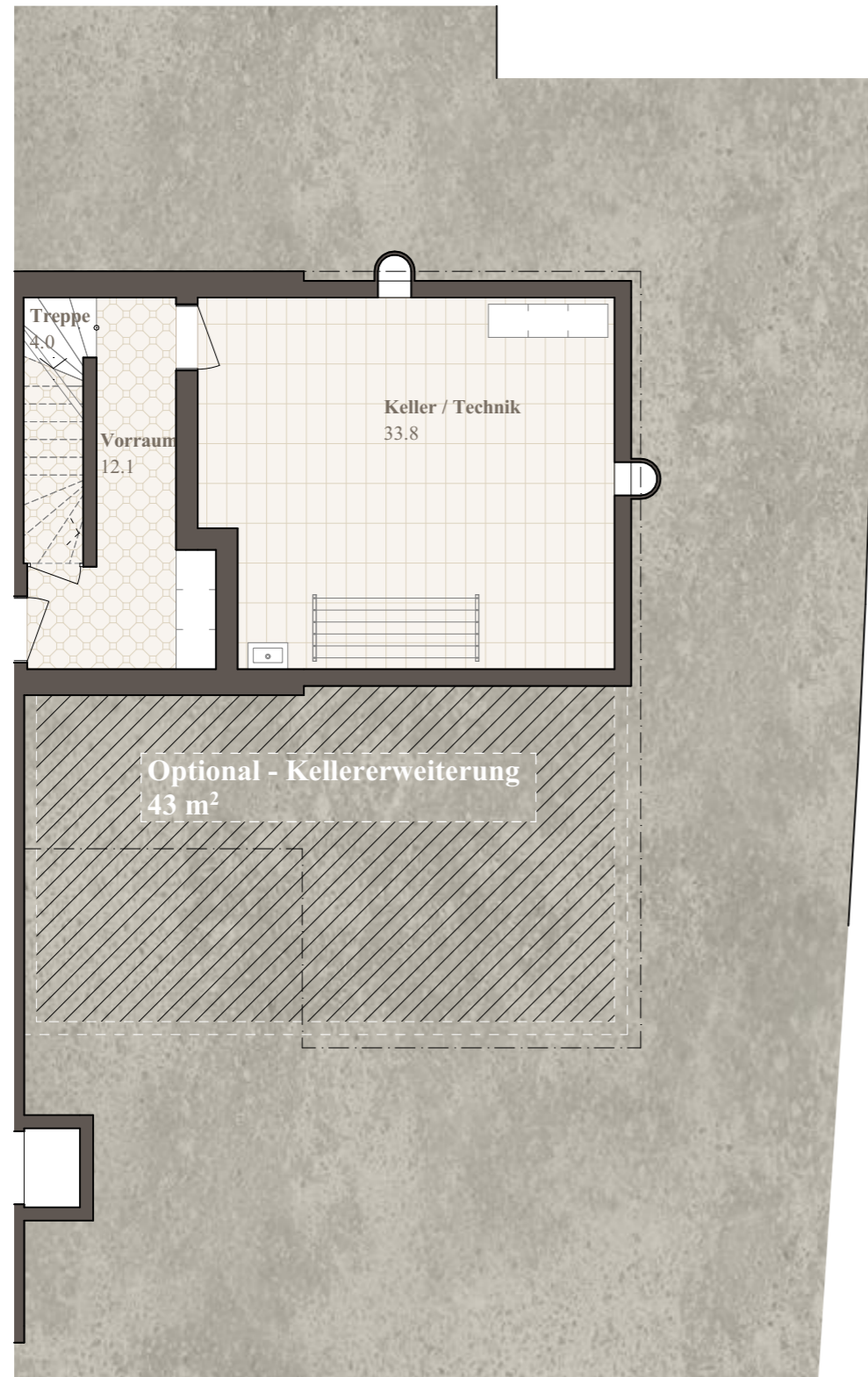


# Löwenstrasse Haus 7

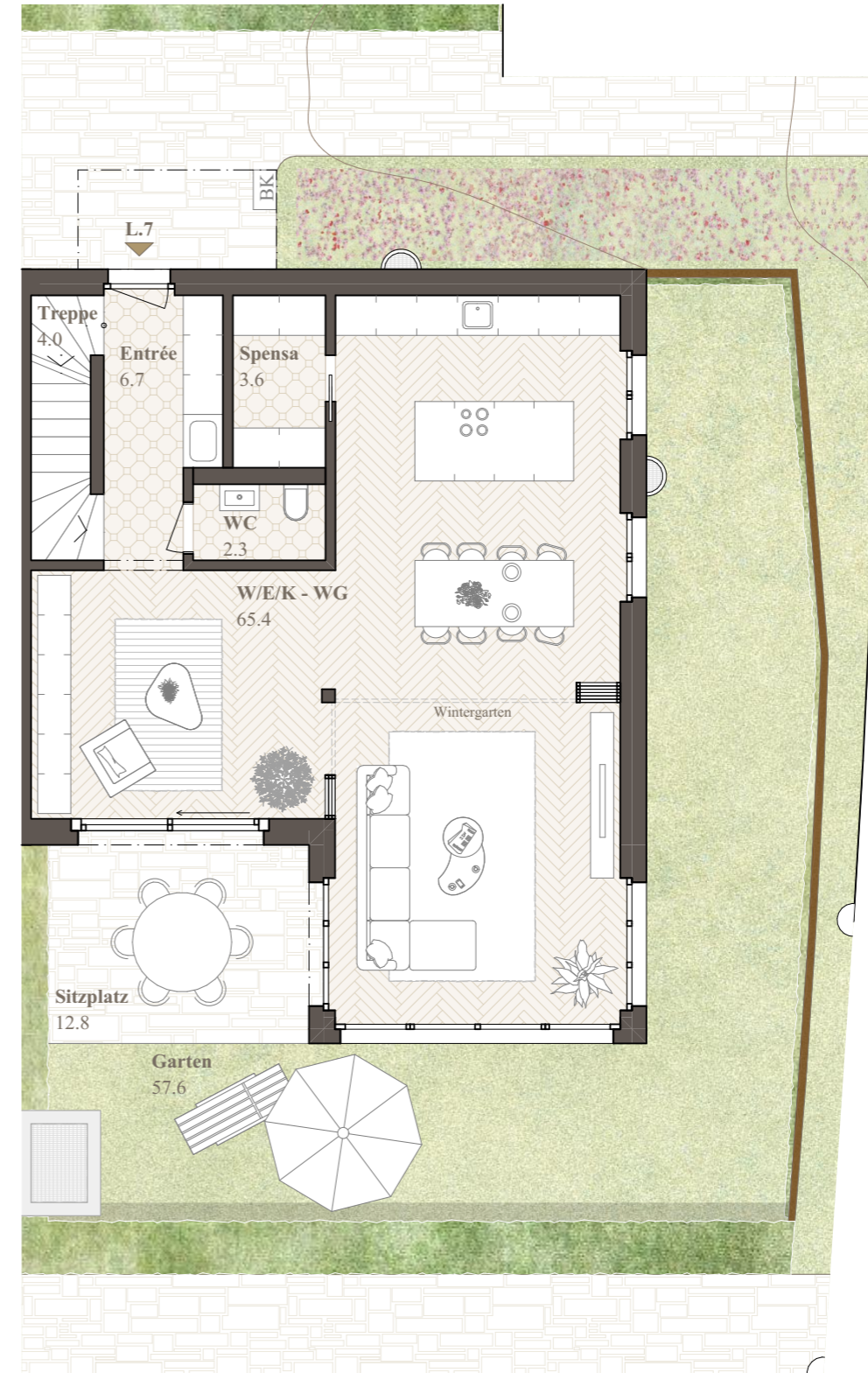
5.5 Zimmer - Doppel Einfamilienhaus  
CHF 1'289'000.-



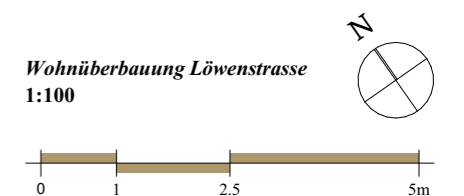
<b>Grundstücksfläche</b>	256.4 m <sup>2</sup>	<b>Keller / Technik</b>	33.8 m <sup>2</sup>
<b>Bruttowohnfläche</b>	203.8 m <sup>2</sup>	<b>Terrassen</b>	36.7 m <sup>2</sup>
<b>Nettowoohnfläche</b>	189.1 m <sup>2</sup>	<b>Garten / Sitzplatz</b>	70.4 m <sup>2</sup>
<b>Kubatur</b>	1'082.5 m <sup>3</sup>	<b>Tiefgarage</b>	2-3 PP je 40'000.- CHF



Untergeschoss

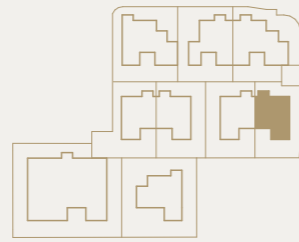


Erdgeschoss

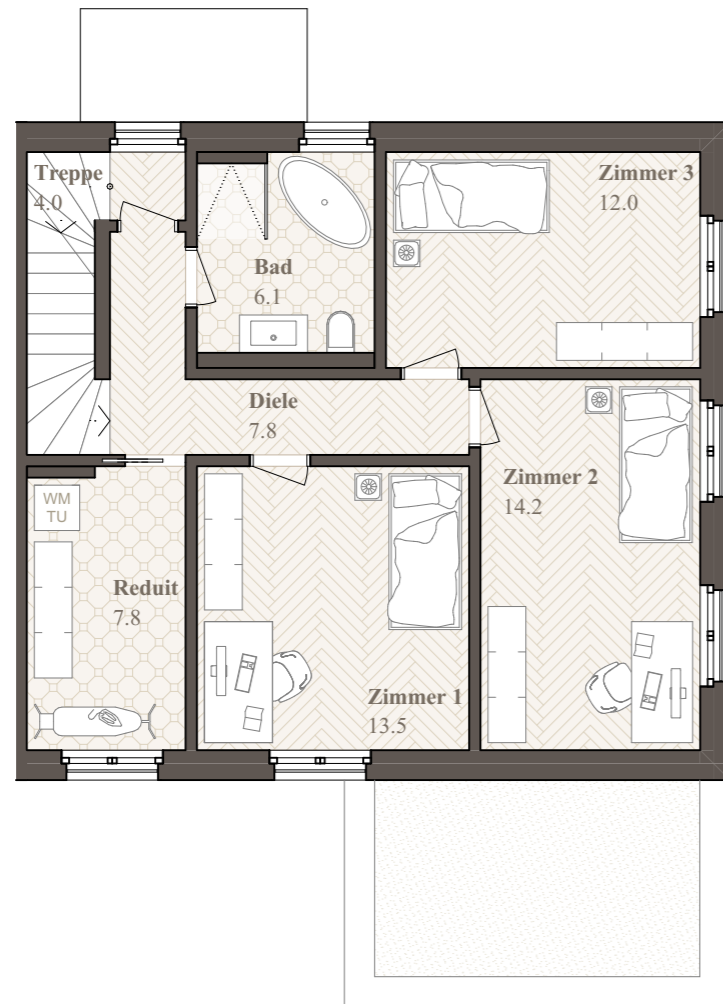


Wohnüberbauung Löwenstrasse  
1:100

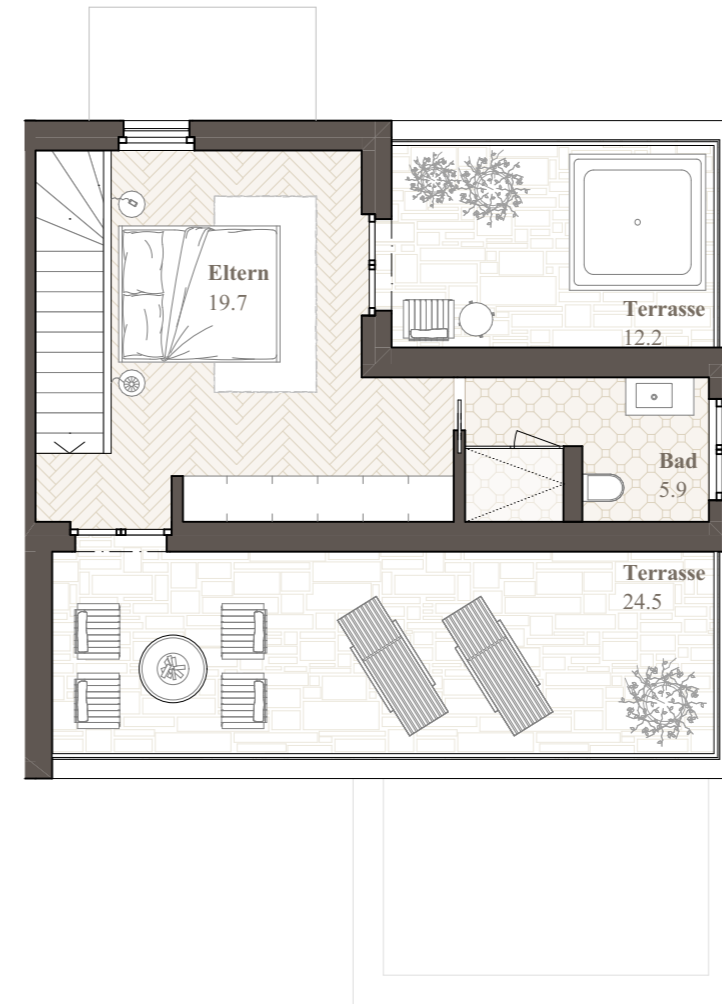
**Löwenstrasse Haus 7**  
**5.5 Zimmer - Doppel Einfamilienhaus**  
**CHF 1'289'000.-**



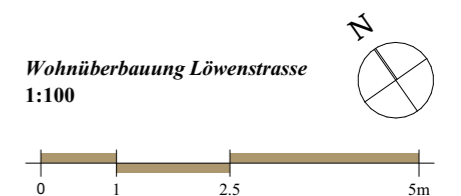
<b>Grundstücksfläche</b>	256.4 m <sup>2</sup>	<b>Keller / Technik</b>	33.8 m <sup>2</sup>
<b>Bruttowohnfläche</b>	203.8 m <sup>2</sup>	<b>Terrassen</b>	36.7 m <sup>2</sup>
<b>Nettowoohnfläche</b>	189.1 m <sup>2</sup>	<b>Garten / Sitzplatz</b>	70.4 m <sup>2</sup>
<b>Kubatur</b>	1'082.5 m <sup>3</sup>	<b>Tiefgarage</b>	2-3 PP je 40'000.- CHF



Obergeschoss



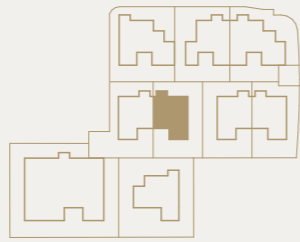
Attika



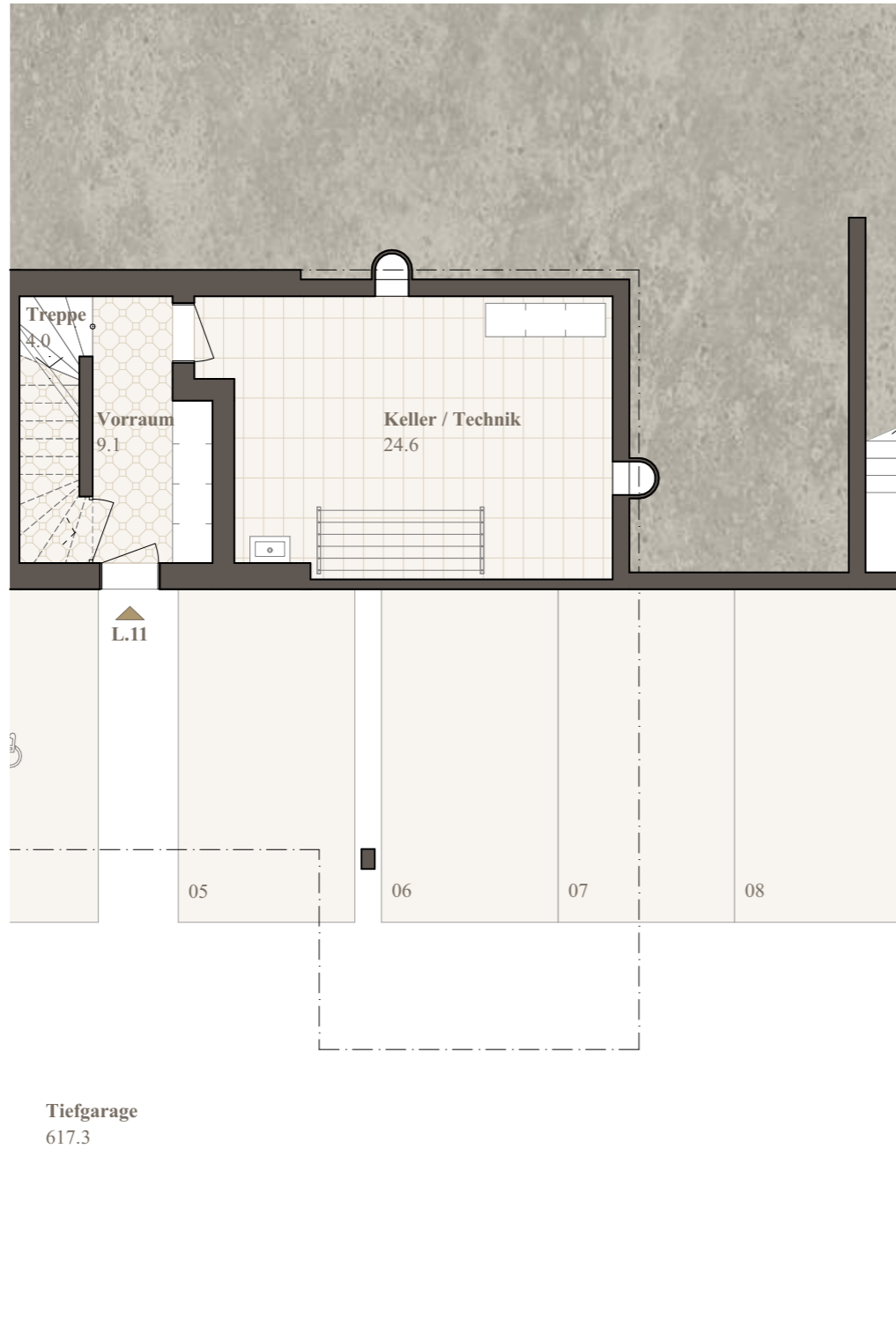


# Löwenstrasse Haus 11

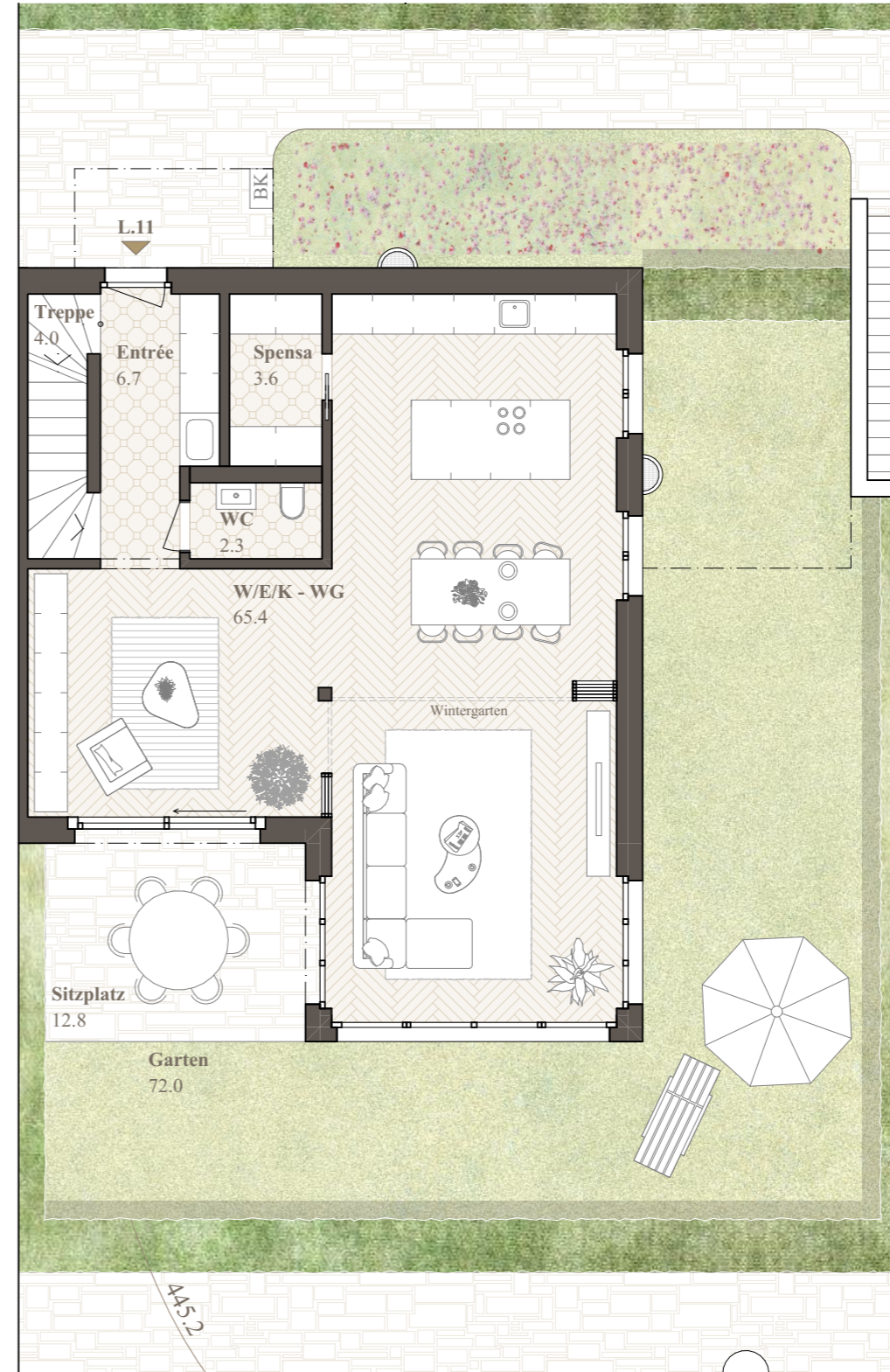
5.5 Zimmer - Doppel Einfamilienhaus  
CHF 1'289'000.-



<b>Grundstücksfläche</b>	278.4 m <sup>2</sup>	<b>Keller / Technik</b>	24.6 m <sup>2</sup>
<b>Bruttowohnfläche</b>	199.7 m <sup>2</sup>	<b>Terrassen</b>	36.7 m <sup>2</sup>
<b>Nettowoohnfläche</b>	186.1 m <sup>2</sup>	<b>Garten / Sitzplatz</b>	84.8 m <sup>2</sup>
<b>Kubatur</b>	994.0 m <sup>3</sup>	<b>Tiefgarage</b>	2-3 PP je 40'000.- CHF

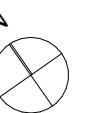
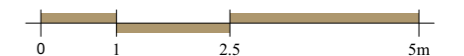


Untergeschoss



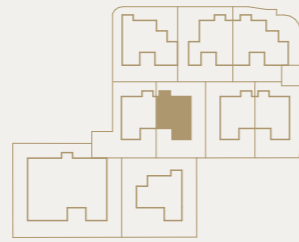
Erdgeschoss

Wohnüberbauung Löwenstrasse  
1:100

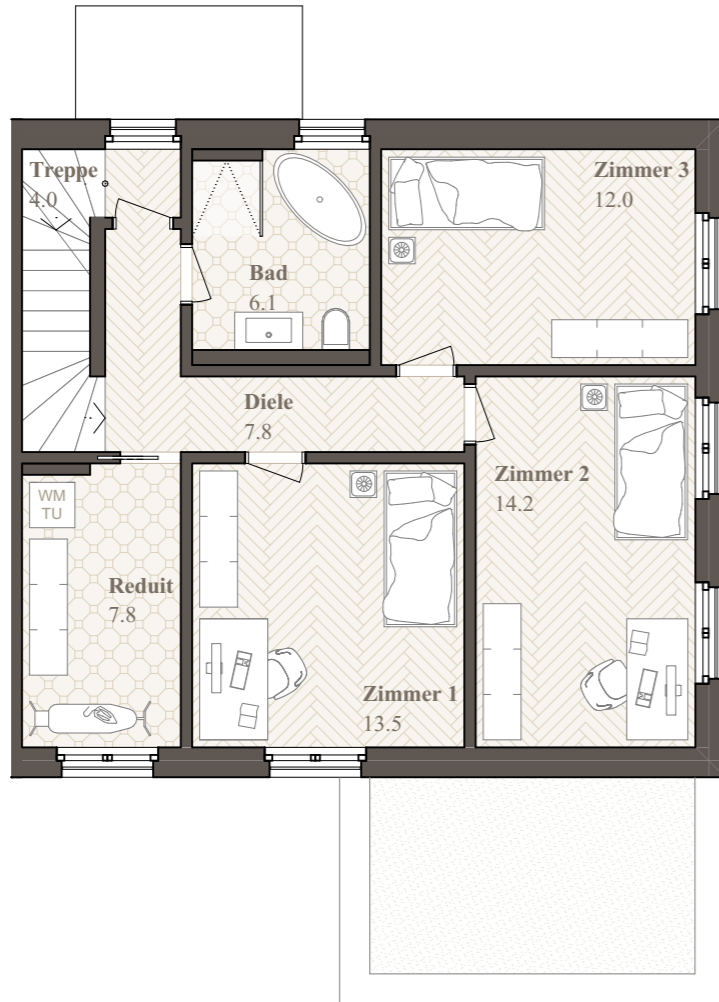


# Löwenstrasse Haus 11

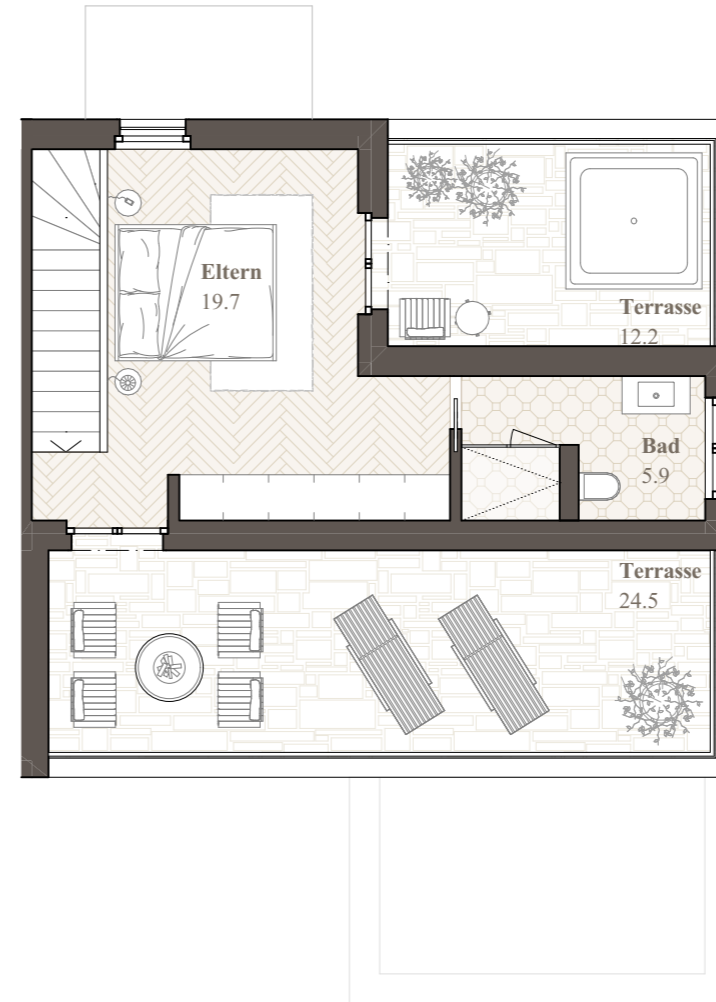
5.5 Zimmer - Doppel Einfamilienhaus  
CHF 1'289'000.-



<b>Grundstücksfläche</b>	278.4 m <sup>2</sup>	<b>Keller / Technik</b>	24.6 m <sup>2</sup>
<b>Bruttowohnfläche</b>	199.7 m <sup>2</sup>	<b>Terrassen</b>	36.7 m <sup>2</sup>
<b>Nettowoohnfläche</b>	186.1 m <sup>2</sup>	<b>Garten / Sitzplatz</b>	84.8 m <sup>2</sup>
<b>Kubatur</b>	994.0 m <sup>3</sup>	<b>Tiefgarage</b>	2-3 PP je 40'000.- CHF

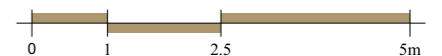


Obergeschoss



Attika

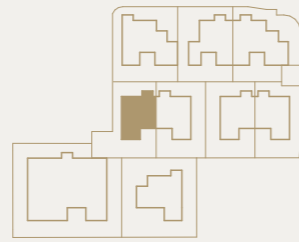
Wohnüberbauung Löwenstrasse  
1:100



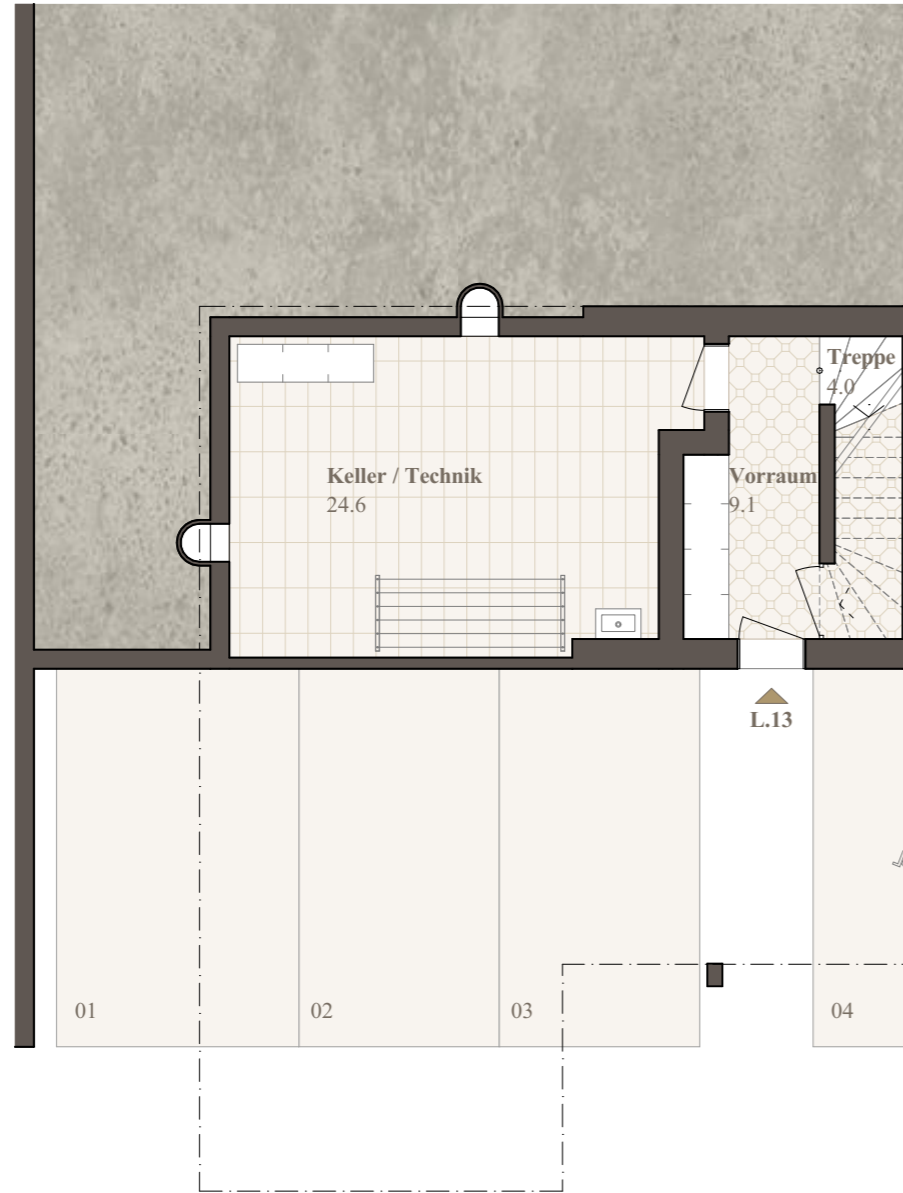


# Löwenstrasse Haus 13

5.5 Zimmer - Doppel Einfamilienhaus  
CHF 1'299'000.-



<b>Grundstücksfläche</b>	283.3 m <sup>2</sup>	<b>Keller / Technik</b>	24.6 m <sup>2</sup>
<b>Bruttowohnfläche</b>	205.7 m <sup>2</sup>	<b>Terrassen</b>	31.1 m <sup>2</sup>
<b>Nettowoohnfläche</b>	191.8 m <sup>2</sup>	<b>Garten / Sitzplatz</b>	119.9 m <sup>2</sup>
<b>Kubatur</b>	1'005.0 m <sup>3</sup>	<b>Tiefgarage</b>	2-3 PP je 40'000.- CHF

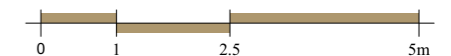


Untergeschoss



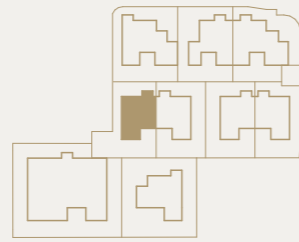
Erdgeschoss

Wohnüberbauung Löwenstrasse  
1:100

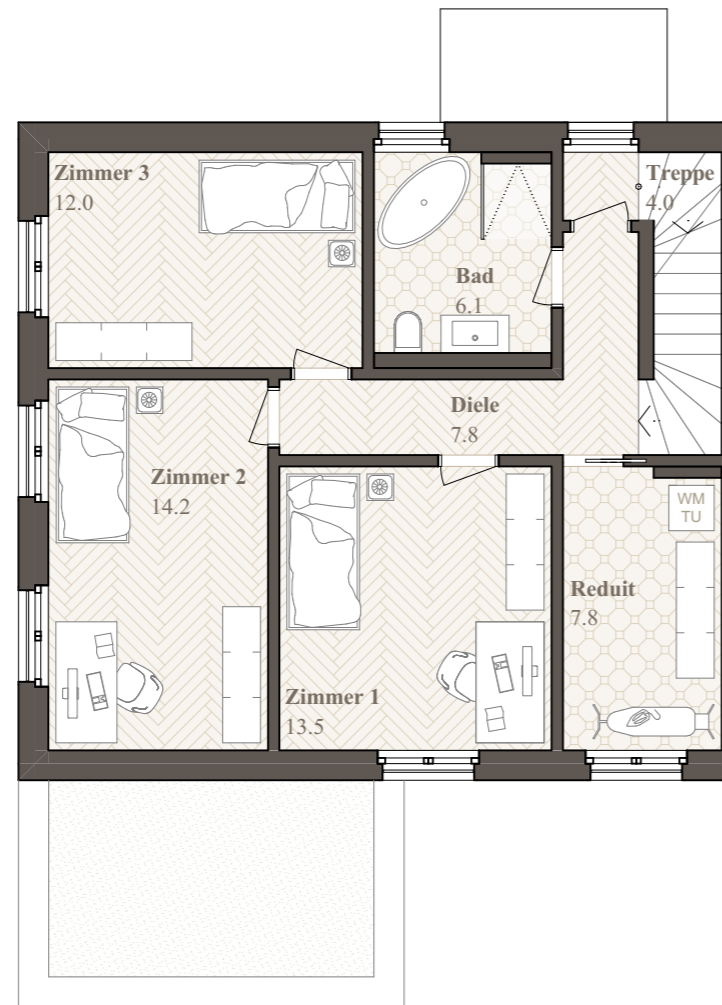


# Löwenstrasse Haus 13

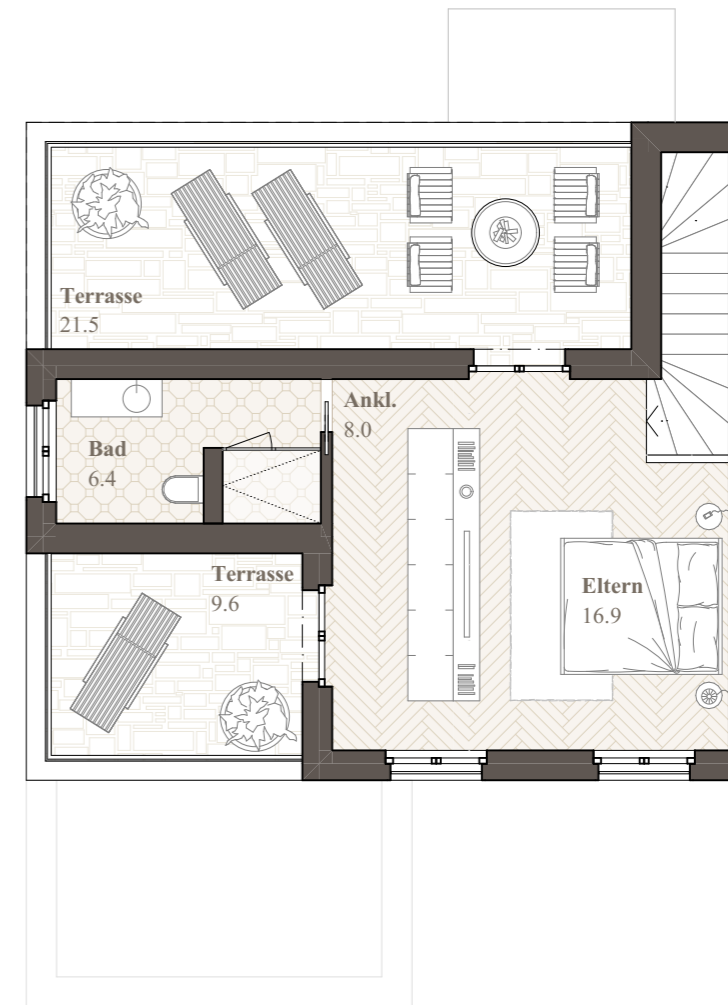
5.5 Zimmer - Doppel Einfamilienhaus  
CHF 1'299'000.-



<b>Grundstücksfläche</b>	283.3 m <sup>2</sup>	<b>Keller / Technik</b>	24.6 m <sup>2</sup>
<b>Bruttowohnfläche</b>	205.7 m <sup>2</sup>	<b>Terrassen</b>	31.1 m <sup>2</sup>
<b>Nettowoohnfläche</b>	191.8 m <sup>2</sup>	<b>Garten / Sitzplatz</b>	119.9 m <sup>2</sup>
<b>Kubatur</b>	1'005.0 m <sup>3</sup>	<b>Tiefgarage</b>	2-3 PP je 40'000.- CHF

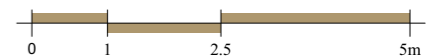


Obergeschoss



Attika

Wohnüberbauung Löwenstrasse  
1:100



# Untergeschoss

Pro Tiefgaragenparkplatz  
CHF 40'000.-



Wohnüberbauung Löwenstrasse  
1:300

