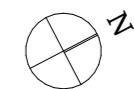
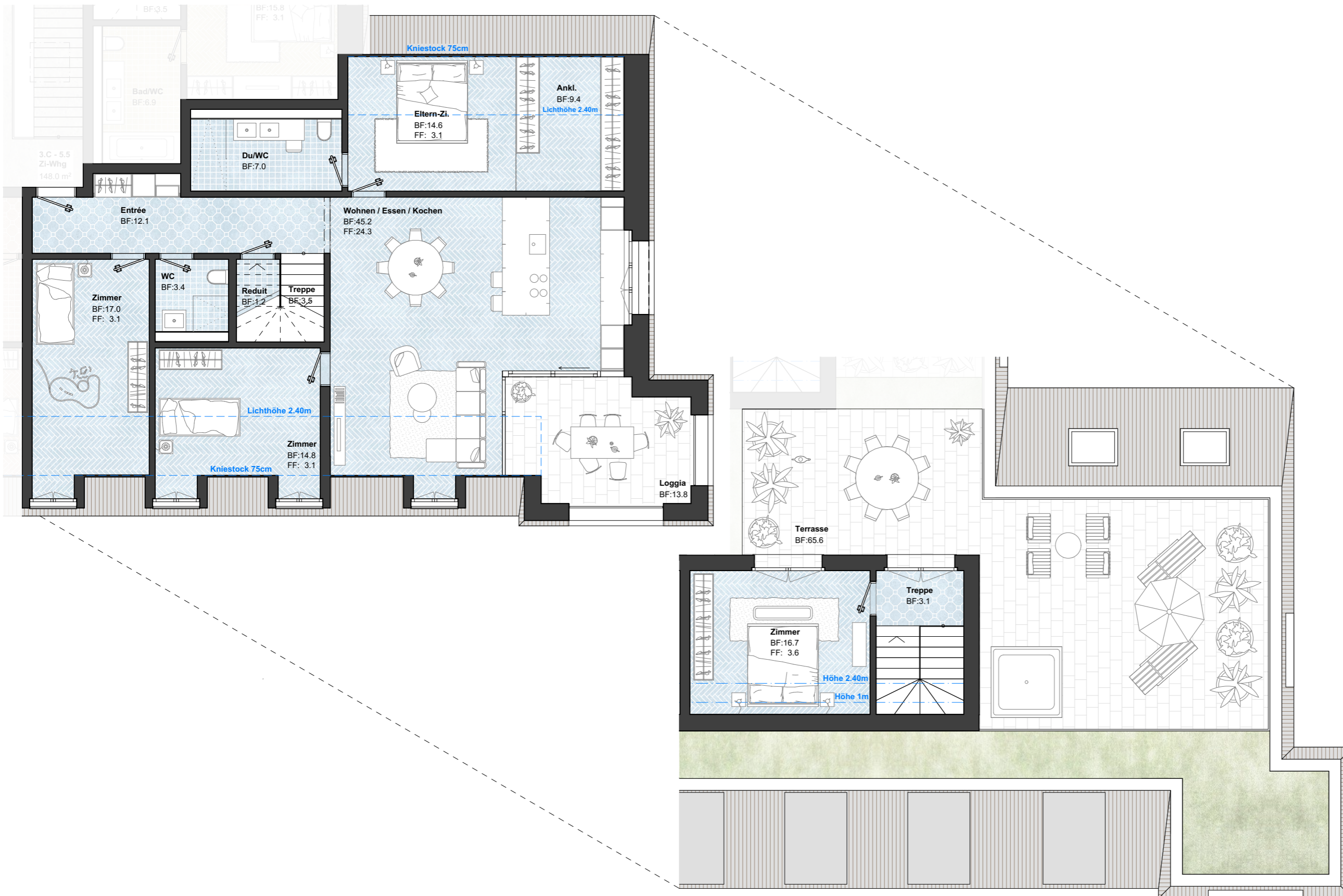


## 3.C - 5.5 Zi-Attika-Maisonette-Whg 1:100

**Nettowohnfläche**  
148.0 m<sup>2</sup>  
**Aussennutzfläche**  
Loggia 13.8 m<sup>2</sup>  
Terrasse 65.6 m<sup>2</sup>



Wohnhaus Bahnhofstr. 27, 9242 Oberuzwil  
10.01.2024

