

B27

*Mehrfamilienhaus
Bahnhofstrasse 27
9242 Oberuzwil*





**0.A - 4.5 Zimmer
Gartenwohnung 1:100**

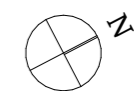
Nettowohnfläche
120.1 m²

Aussennutzfläche

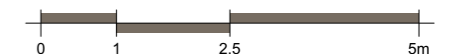
Loggien 26.5 m²

Sitzplatz 44.2 m²

Garten 94.7 m²



Wohnhaus Bahnhofstr. 27, 9242 Oberuzwil
11.03.2024



**0.B - 4.5 Zimmer
Gartenwohnung 1:100**

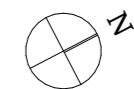
Nettowoohnfläche
130.9 m²

Aussennutzfläche

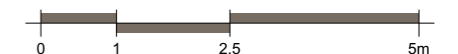
Loggia 18.1 m²

Sitzplatz 20.0 m²

Garten 64.1 m²

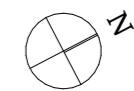
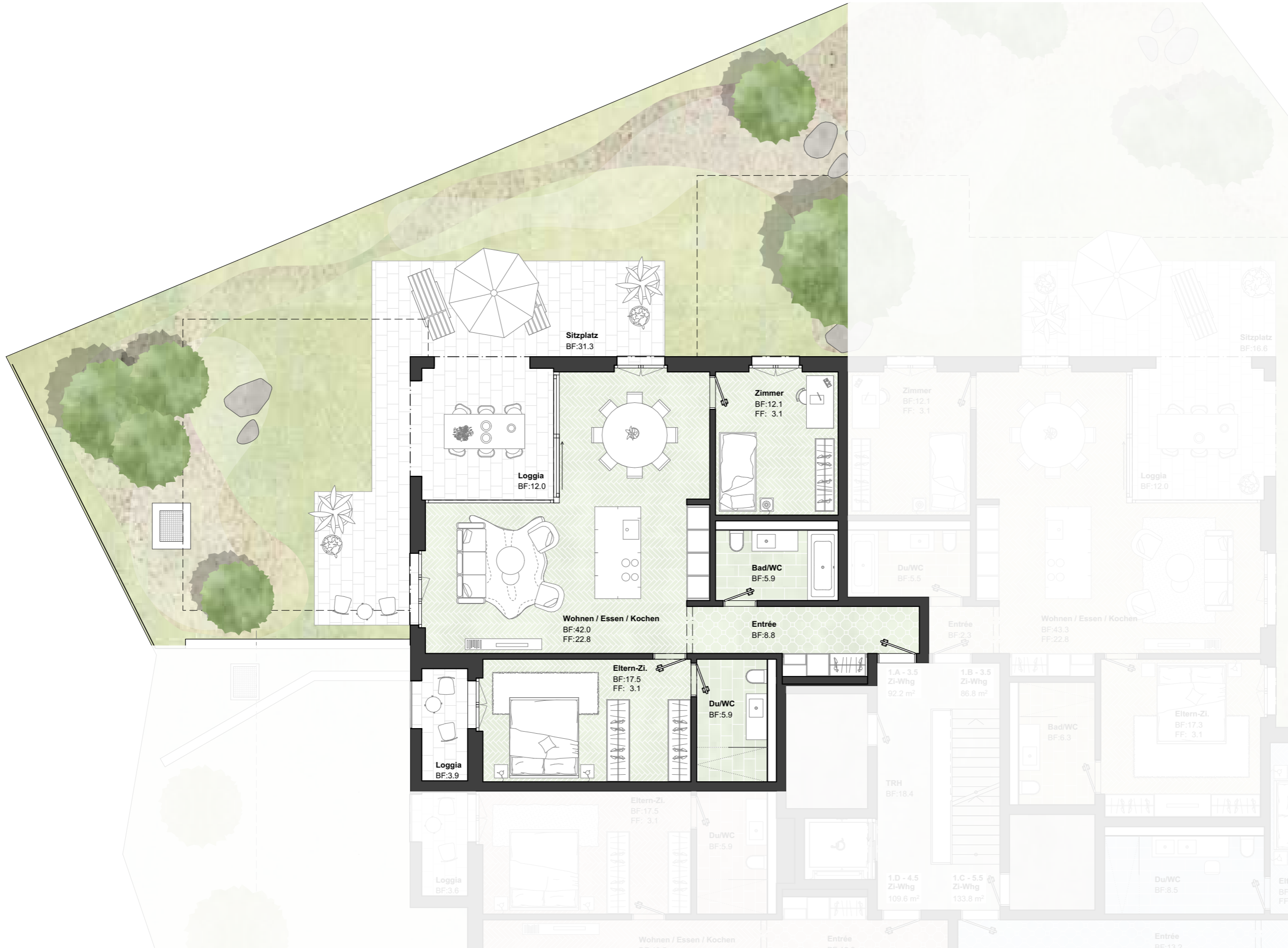


Wohnhaus Bahnhofstr. 27, 9242 Oberuzwil
11.03.2024

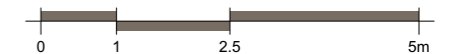


**1.A - 3.5 Zimmer
Gartenwohnung 1:100**

Nettowohnfläche
92.2 m²
Aussennutzfläche
Loggia 15.9 m²
Sitzplatz 31.3 m²
Garten 132.5 m²



Wohnhaus Bahnhofstr. 27, 9242 Oberuzwil
11.03.2024

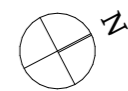


**1.B - 3.5 Zimmer
Gartenwohnung 1:100**

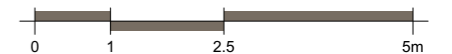
Nettowoohnfläche
86.8 m²

Aussennutzfläche
Loggia 12.0 m²
Sitzplatz 16.6 m²
Garten 120.0 m²

VERKAUFT



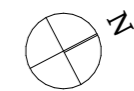
Wohnhaus Bahnhofstr. 27, 9242 Oberuzwil
11.03.2024



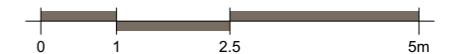


1.C - 5.5 Zimmer-Whg
1:100

Nettowohnfläche
133.8 m²
Aussennutzfläche
Loggia 16.7 m²



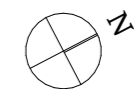
Wohnhaus Bahnhofstr. 27, 9242 Oberuzwil
11.03.2024



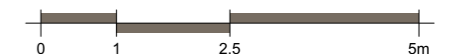


**1.D - 4.5 Zimmer-Whg
1:100**

**Nettowoohnfläche
109.6 m²
Aussennutzfläche
Loggien 20.3 m²**



Wohnhaus Bahnhofstr. 27, 9242 Oberuzwil
11.03.2024



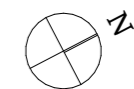
**2.A - 3.5 Zimmer-Whg
1:100**

Nettowoohnfläche

92.2 m²

Aussennutzfläche

Loggien 15.9 m²



Wohnhaus Bahnhofstr. 27, 9242 Oberuzwil
11.03.2024



2.B - 3.5 Zimmer-Whg
1:100

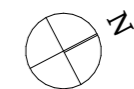
Nettowoohnfläche

86.2 m²

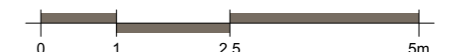
Aussennutzfläche

Loggia 12.0 m²

VERKAUFT



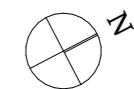
Wohnhaus Bahnhofstr. 27, 9242 Oberuzwil
11.03.2024



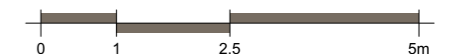


2.C - 5.5 Zimmer-Whg
1:100

Nettowoohnfläche
 133.8 m²
Aussennutzfläche
 Loggia 16.7 m²



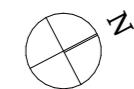
Wohnhaus Bahnhofstr. 27, 9242 Oberuzwil
 11.03.2024



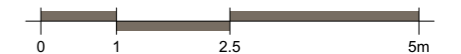


2.D - 4.5 Zimmer-Whg
1:100

Nettowohnfläche
109.6 m²
Aussennutzfläche
Loggien 20.3 m²

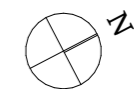


Wohnhaus Bahnhofstr. 27, 9242 Oberuzwil
11.03.2024

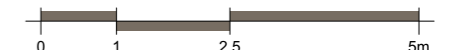


**3.A - 4.5 Attika-Whg
Maisonette 1:100**

Nettowohnfläche
114.3 m²
Aussennutzfläche
Loggia 10.0 m²
Terrasse 43.1 m²



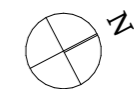
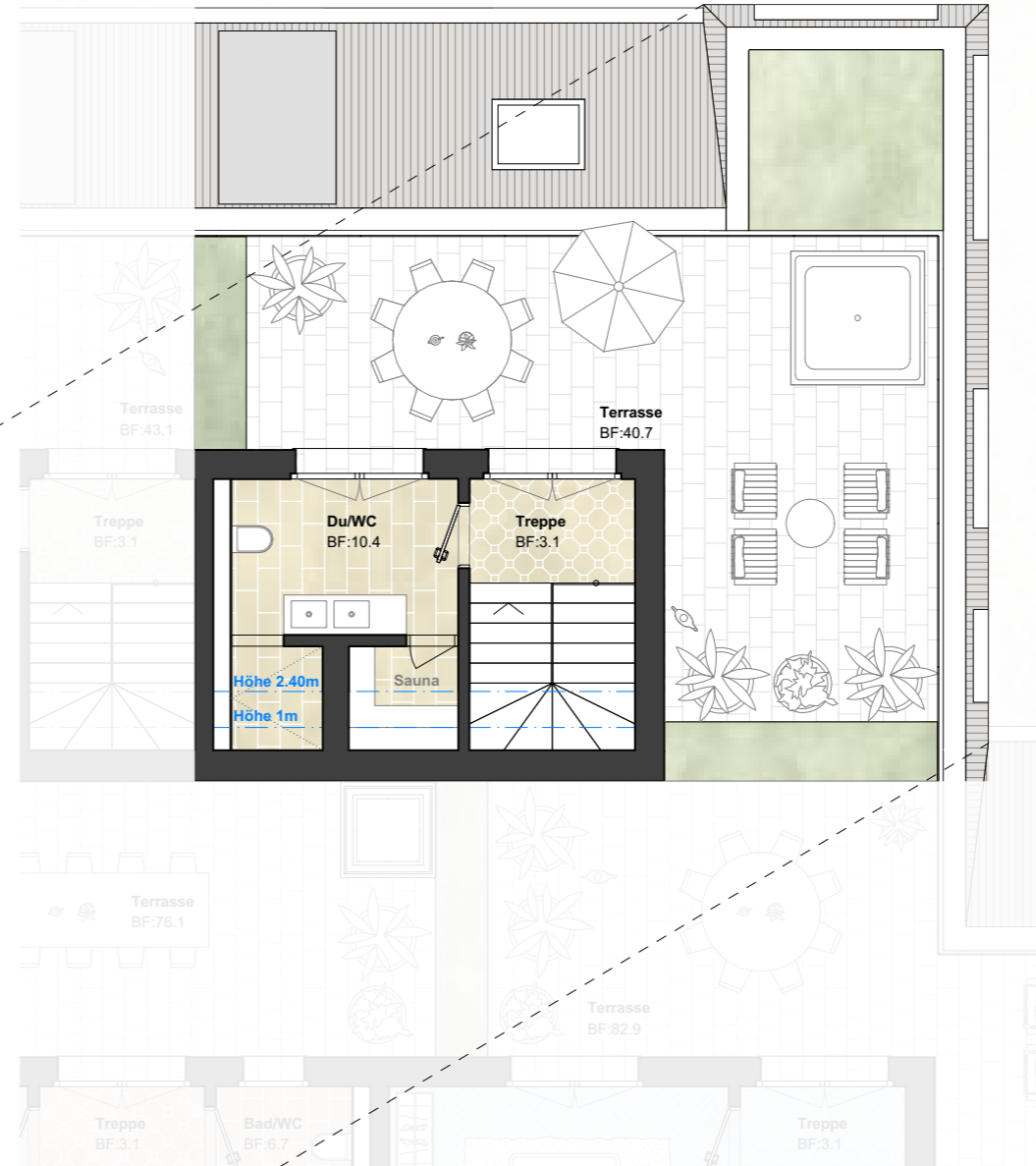
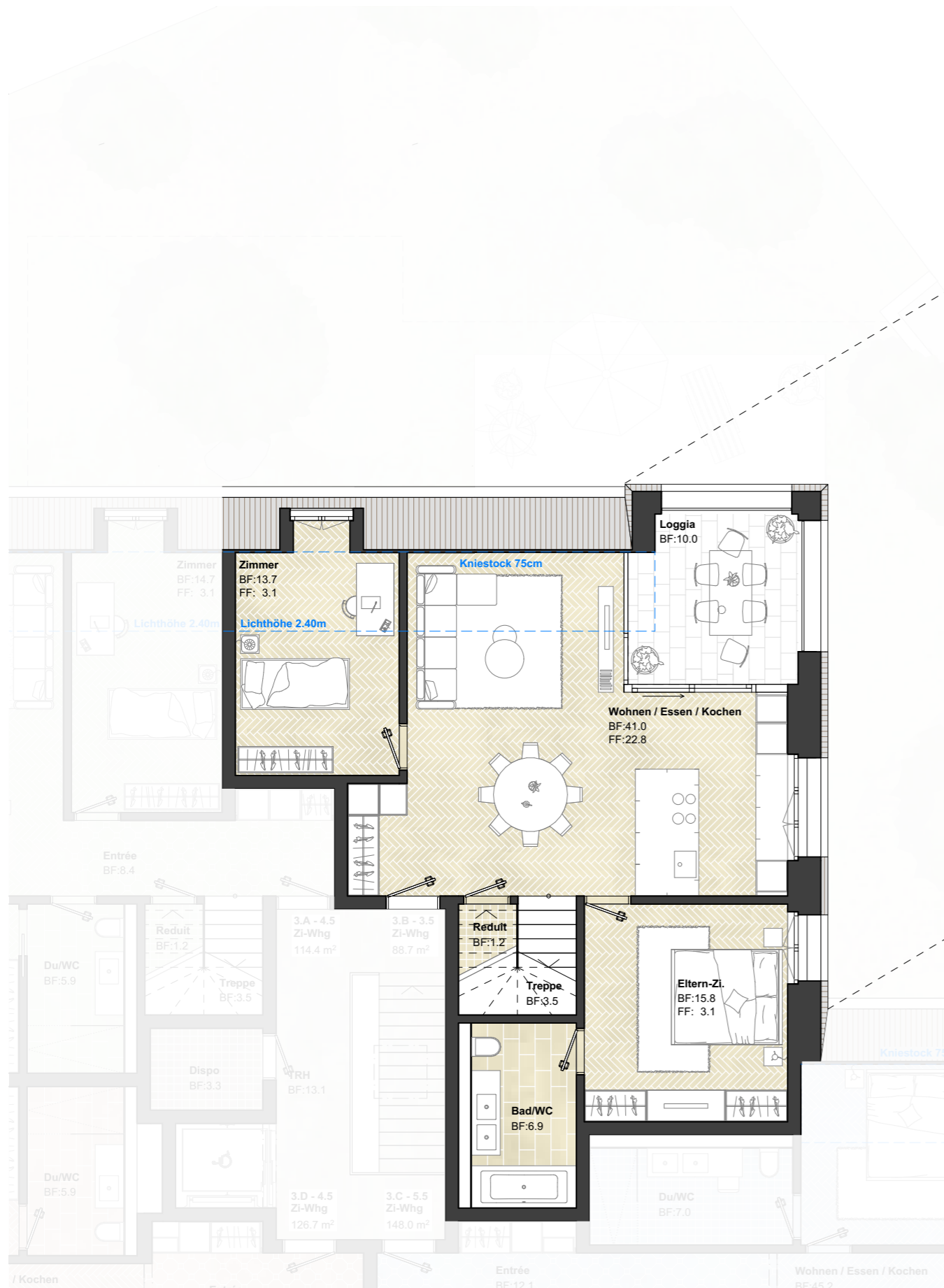
Wohnhaus Bahnhofstr. 27, 9242 Oberuzwil
11.03.2024



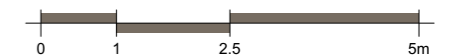
**3.B - 3.5 Attika-Whg
Maisonette 1:100**

Nettowoohnfläche
88.7 m²

Aussennutzfläche
Loggia 10.0 m²
Terrasse 40.7 m²

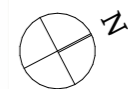
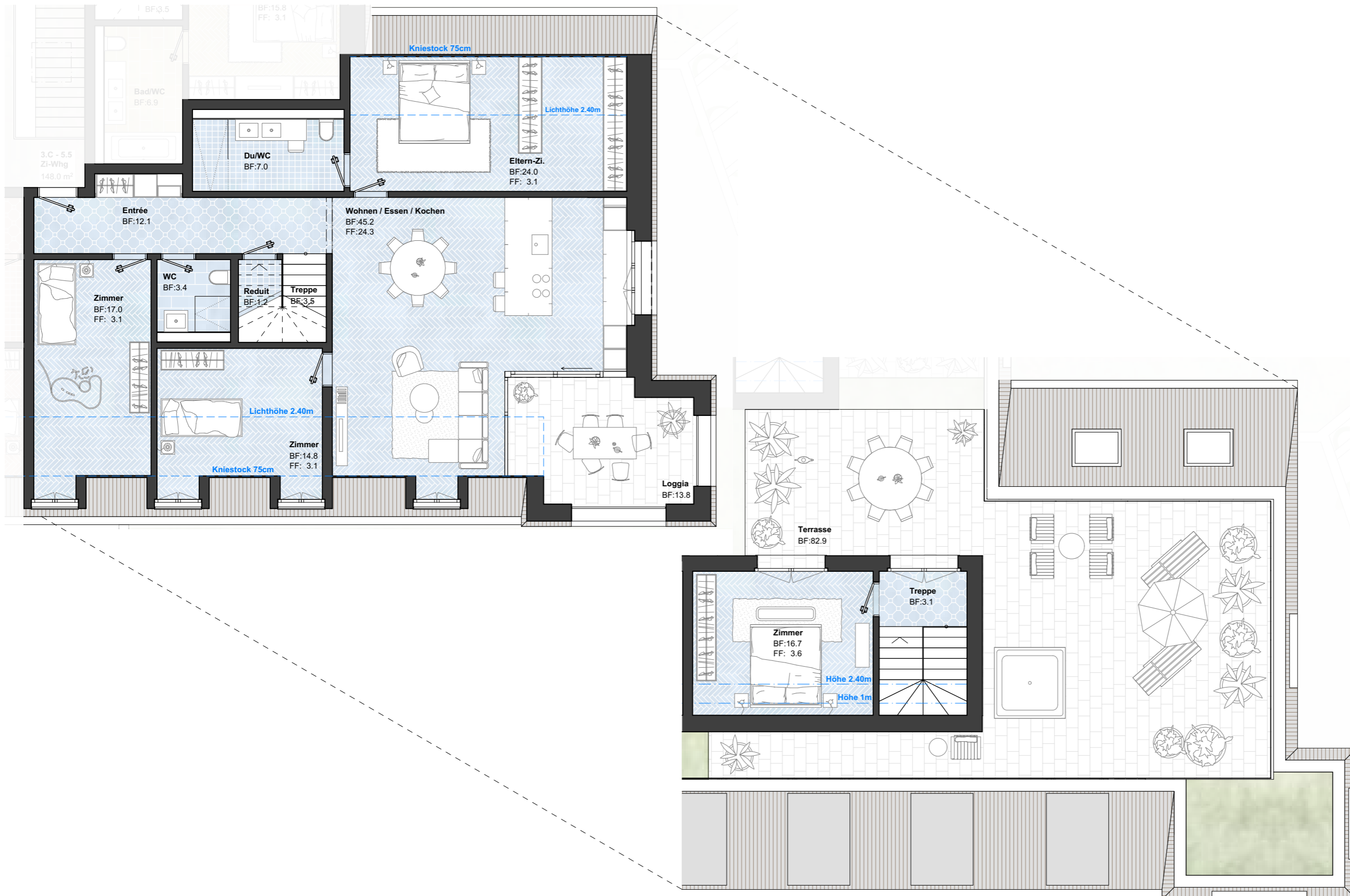


Wohnhaus Bahnhofstr. 27, 9242 Oberuzwil
11.03.2024

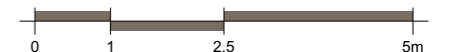


3.C - 5.5 Attika-Whg Maisonette 1:100

Nettowohnfläche
148.0 m²
Aussennutzfläche
Loggia 13.8 m²
Terrasse 82.9 m²



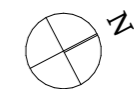
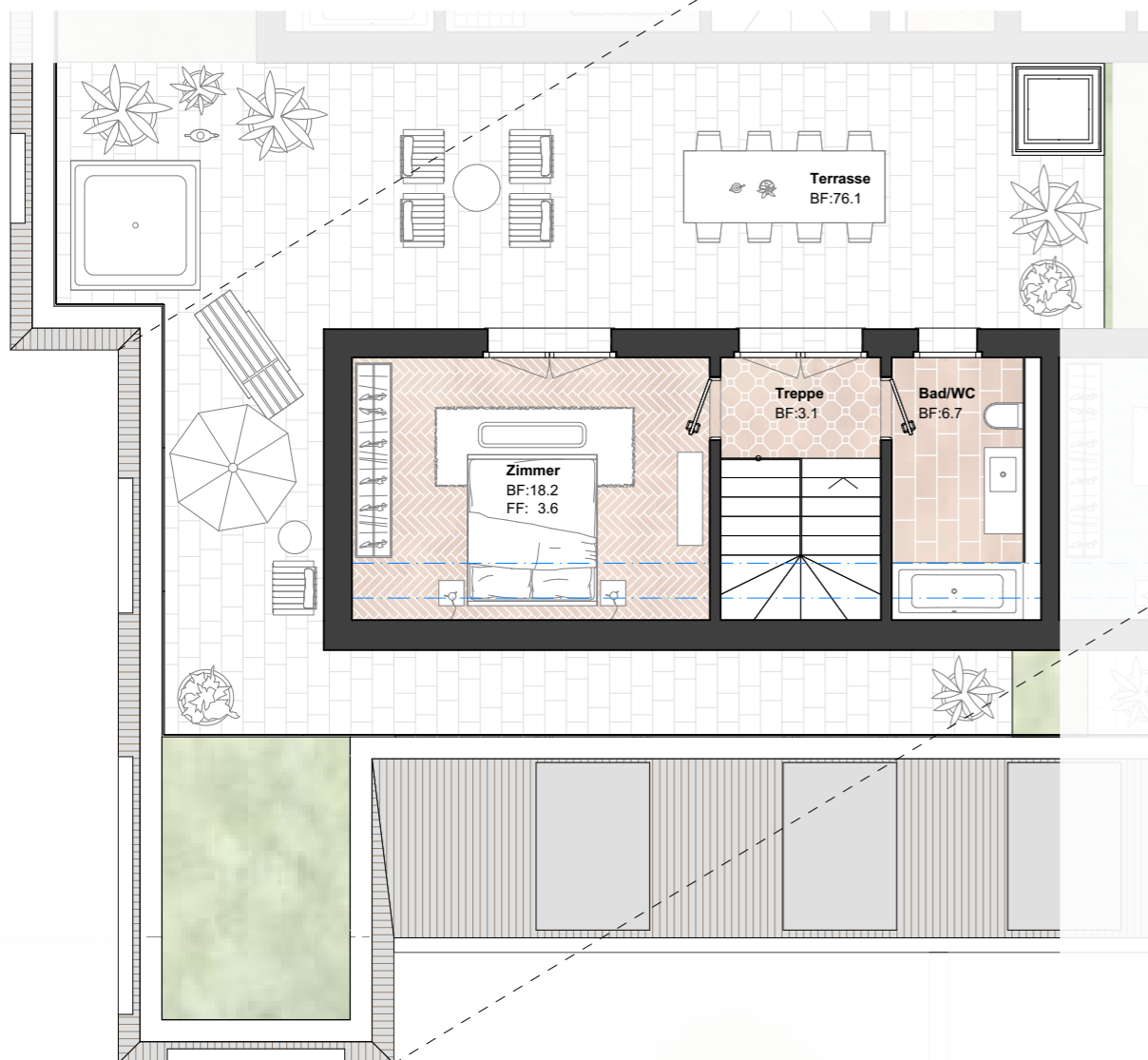
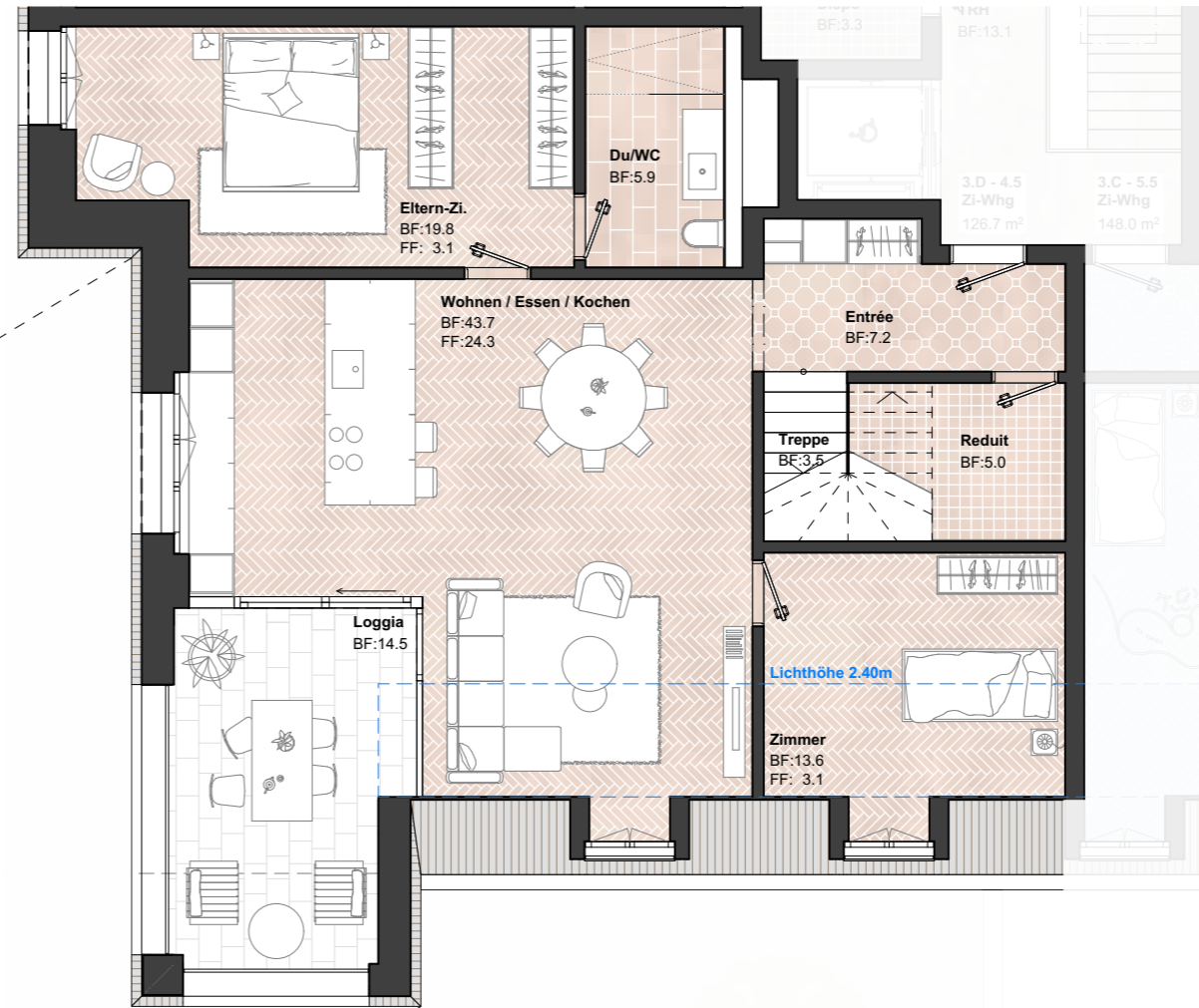
Wohnhaus Bahnhofstr. 27, 9242 Oberuzwil
11.03.2024



**3.D - 4.5 Attika-Whg
Maisonette 1:100**

Nettowoohnfläche
126.7 m²
Aussennutzfläche
Loggia 14.5 m²
Terrasse 76.1 m²

VERKAUFT



Wohnhaus Bahnhofstr. 27, 9242 Oberuzwil
11.03.2024

