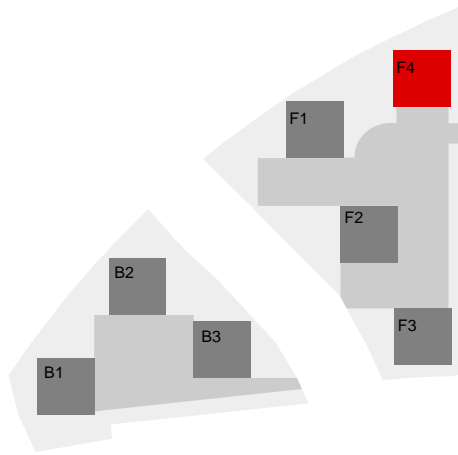


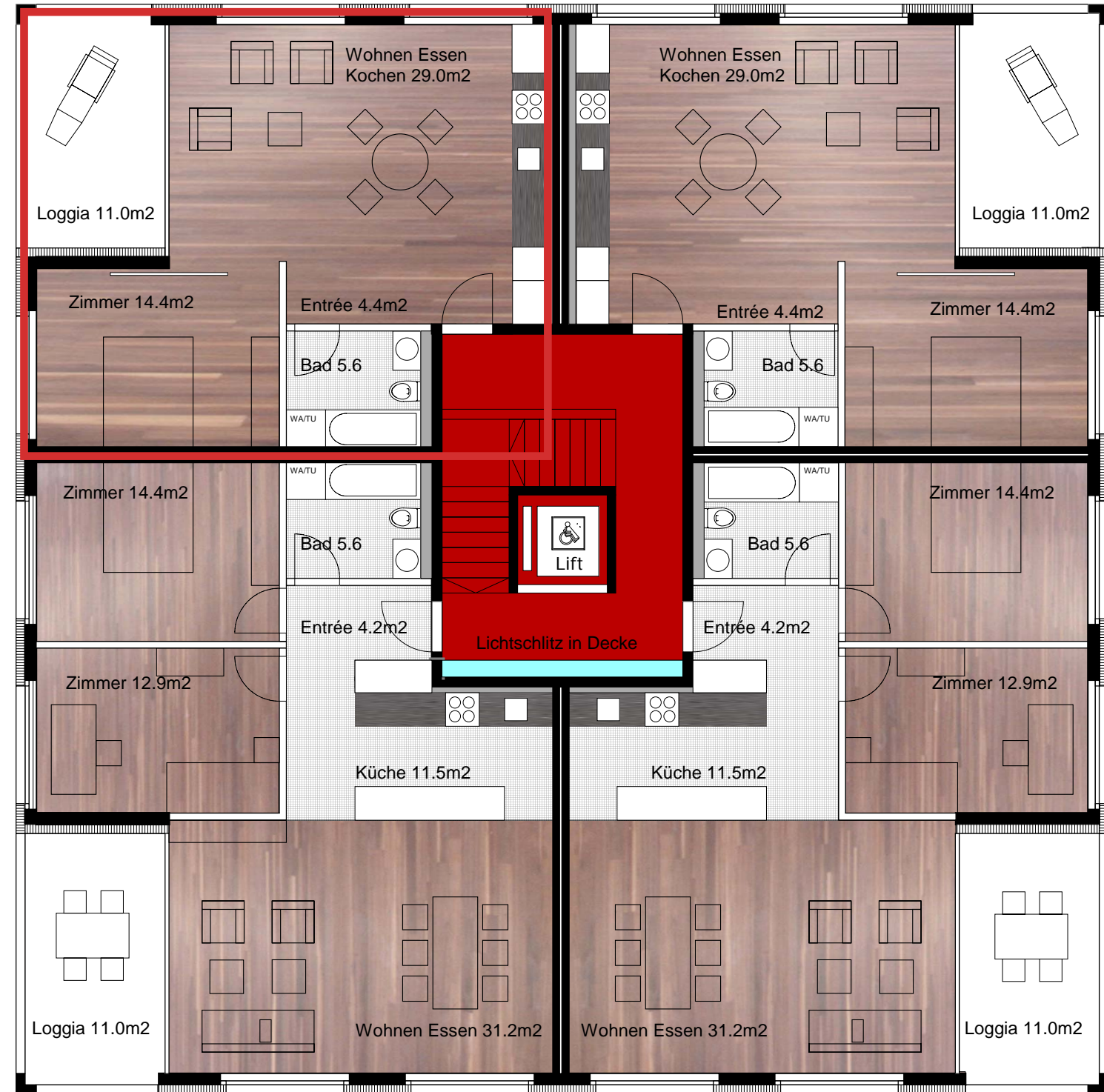
SEKTOR F4

GRUNDRISS- TYP3  
 EG - 5.OG



2 1/2 - Zimmer Wohnung  
 53.4m<sup>2</sup>  
 Loggia 11m<sup>2</sup>

2 1/2 - Zimmer Wohnung  
 53.4m<sup>2</sup>  
 Loggia 11m<sup>2</sup>



3 1/2 - Zimmer Wohnung  
 79.8m<sup>2</sup>  
 Loggia 11m<sup>2</sup>

3 1/2 - Zimmer Wohnung  
 79.8m<sup>2</sup>  
 Loggia 11m<sup>2</sup>

2	- 2 1/2 - Zimmerwohnung Loggia	53 m <sup>2</sup> 11 m <sup>2</sup>
2	- 3 1/2 - Zimmerwohnung Loggia	80 m <sup>2</sup> 11 m <sup>2</sup>

MST. 1:100

