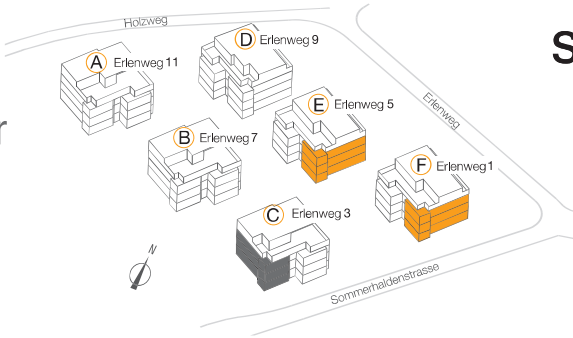


# Haus C|E|F



C2, C4, C6, E1, E3, E5, F1, F3, F5

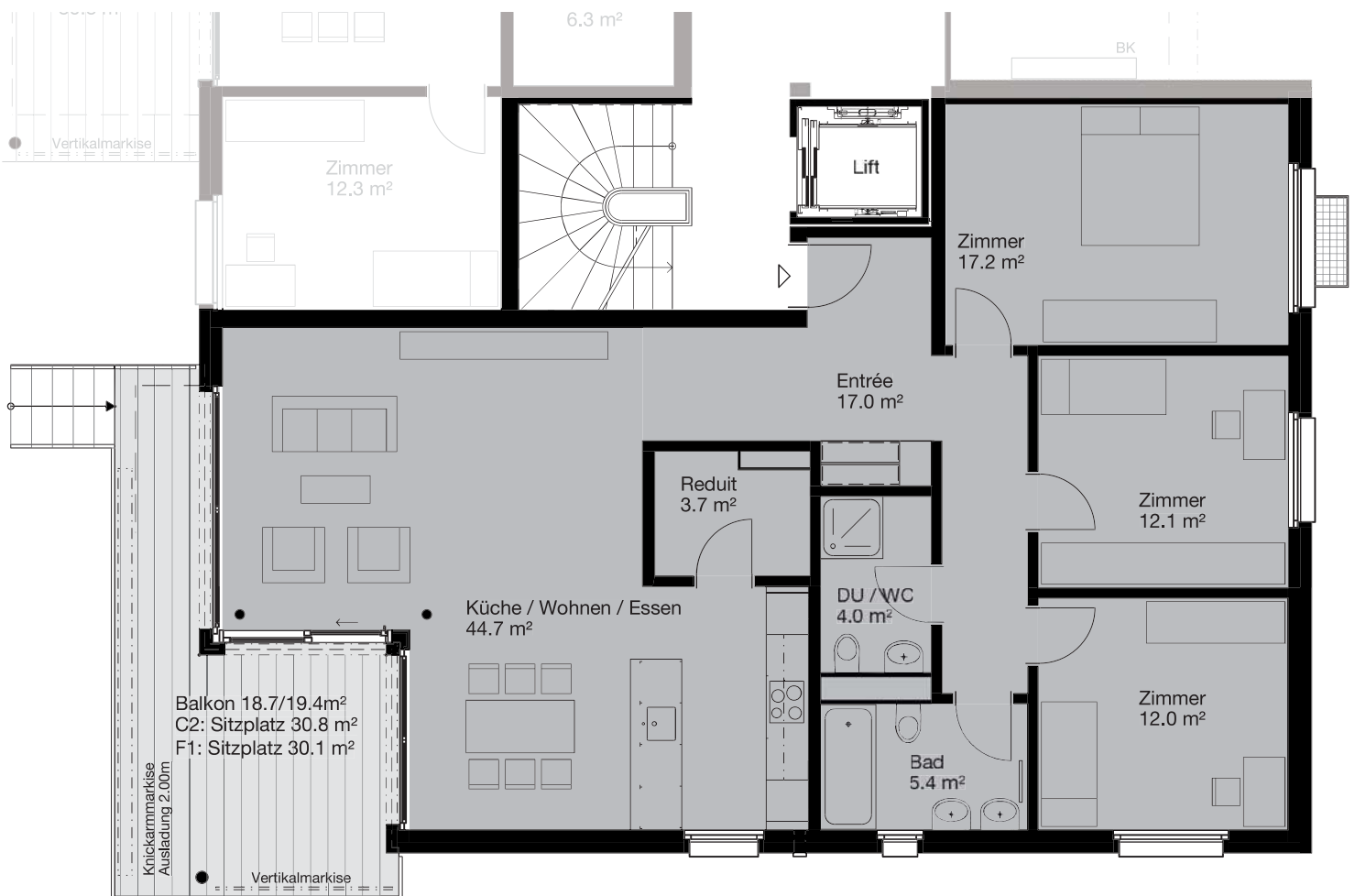
EG / 1.OG / 2.OG 4½-Zimmer

|                       |                           |
|-----------------------|---------------------------|
| Wohnfläche            | 122.4 m <sup>2</sup>      |
| Balkon                | 18.7/19.4 m <sup>2</sup>  |
| C 2: Sitzplatz/Garten | 30.8/218.0 m <sup>2</sup> |
| E 1: Balkon/Garten    | 18.7/180.5 m <sup>2</sup> |
| F 1: Sitzplatz/Garten | 30.1/206.5 m <sup>2</sup> |
| Keller                | 16.6–24.5 m <sup>2</sup>  |



**summerhalde**  
modern wohnen im Grünen

-  Grundriss wie abgebildet
-  Grundriss gespiegelt, um 90° gedreht



0 5 m

M 1:100