

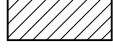



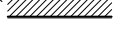
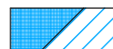
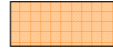


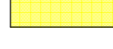
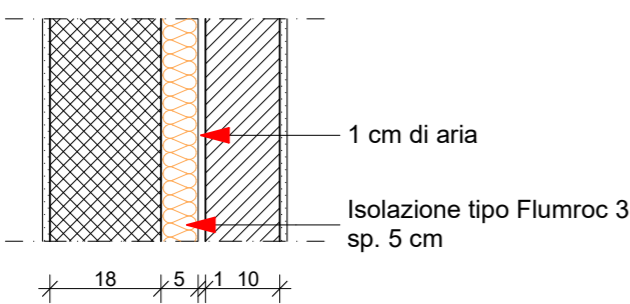


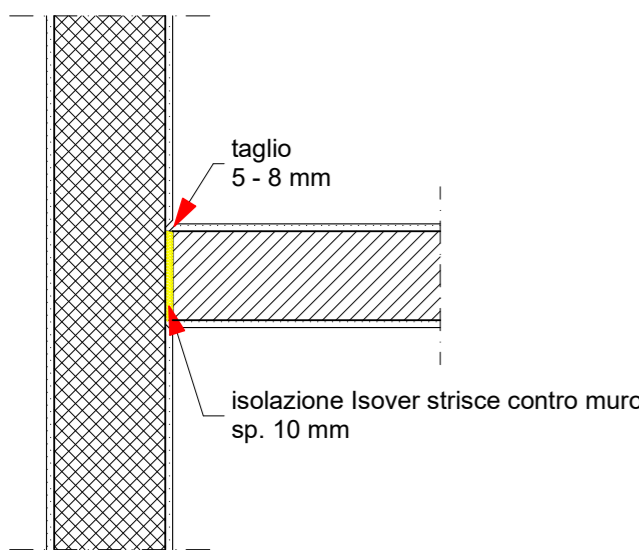
**Legenda**

-  Calcestruzzo
-  Calcestruzzo a vista
-  Muratura in cotto
-  Muratura in cotto calmo
-  Isolazione termica a cappotto  
Swisspor LAMBDA White\* 030  $\lambda$  0.030 W/(m K)
-  muratura in cotto posata su stacco  
acustico tipo Pronouvo 5086 10mm
-  doppia muratura con isolamento Flumroc 3 sp. 5 cm
-  Styrofoam in getto
-  Isolazione tipo 1  
Flumroc sp.3 cm
-  Isolazione tipo Flumroc 3
-  Isolazione FibraRoc leicht35  
0.035 W/(m K)
-  Isolazione termica  
Swsspor PIR ALU sp.16 cm  $\lambda$  0.022 W/(m K)

**Dettaglio doppia muratura  
scala 1:10  
sezione**



**Dettaglio muratura divisoria  
contro muro CA  
scala 1:10  
pianta**



**Dettaglio muratura divisoria  
su soletta in CA  
scala 1:10  
sezione**

