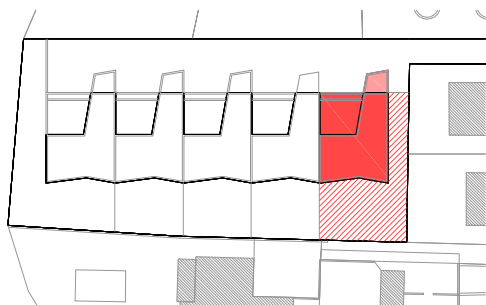


CASA 1

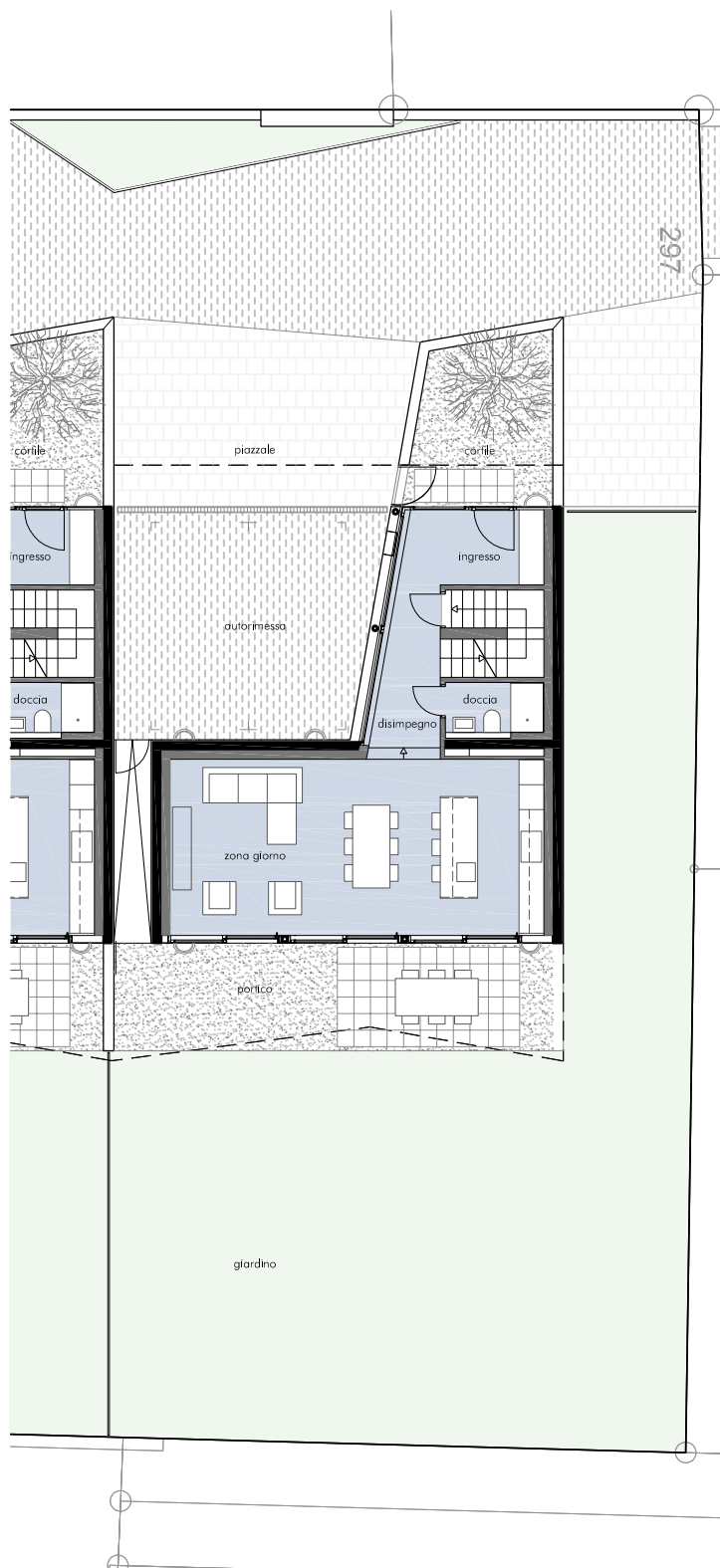


CASE UNIFAMILIARI A GRAVESANO

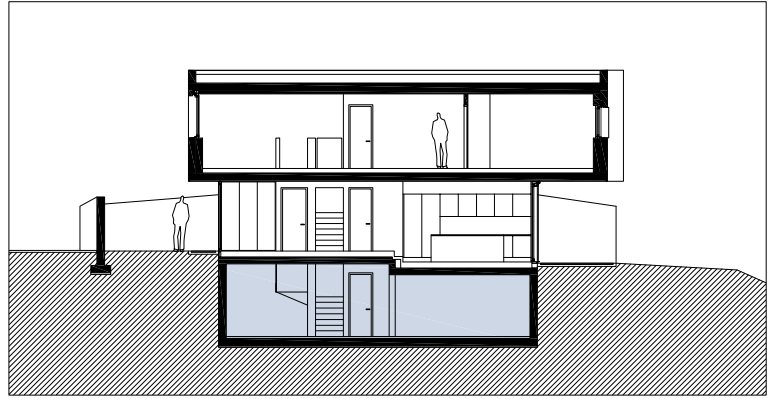
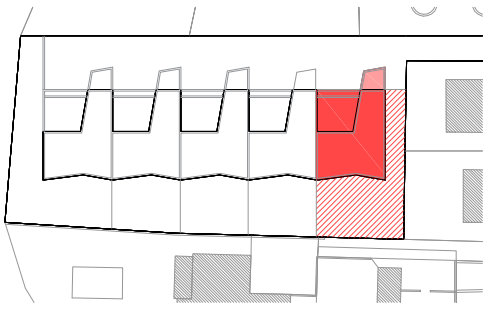
PROGETTO: INFABRICA ARCHITETTURA E DESIGN - TESSERETE

SITUAZIONE

SUN	GIARDINO	175.10 m ²
	AUTORIMESSA	33.70 m ²
	PIAZZALE	29.60 m ²
	PORTICO	27.60 m ²
	CORTILE	13.20 m ²

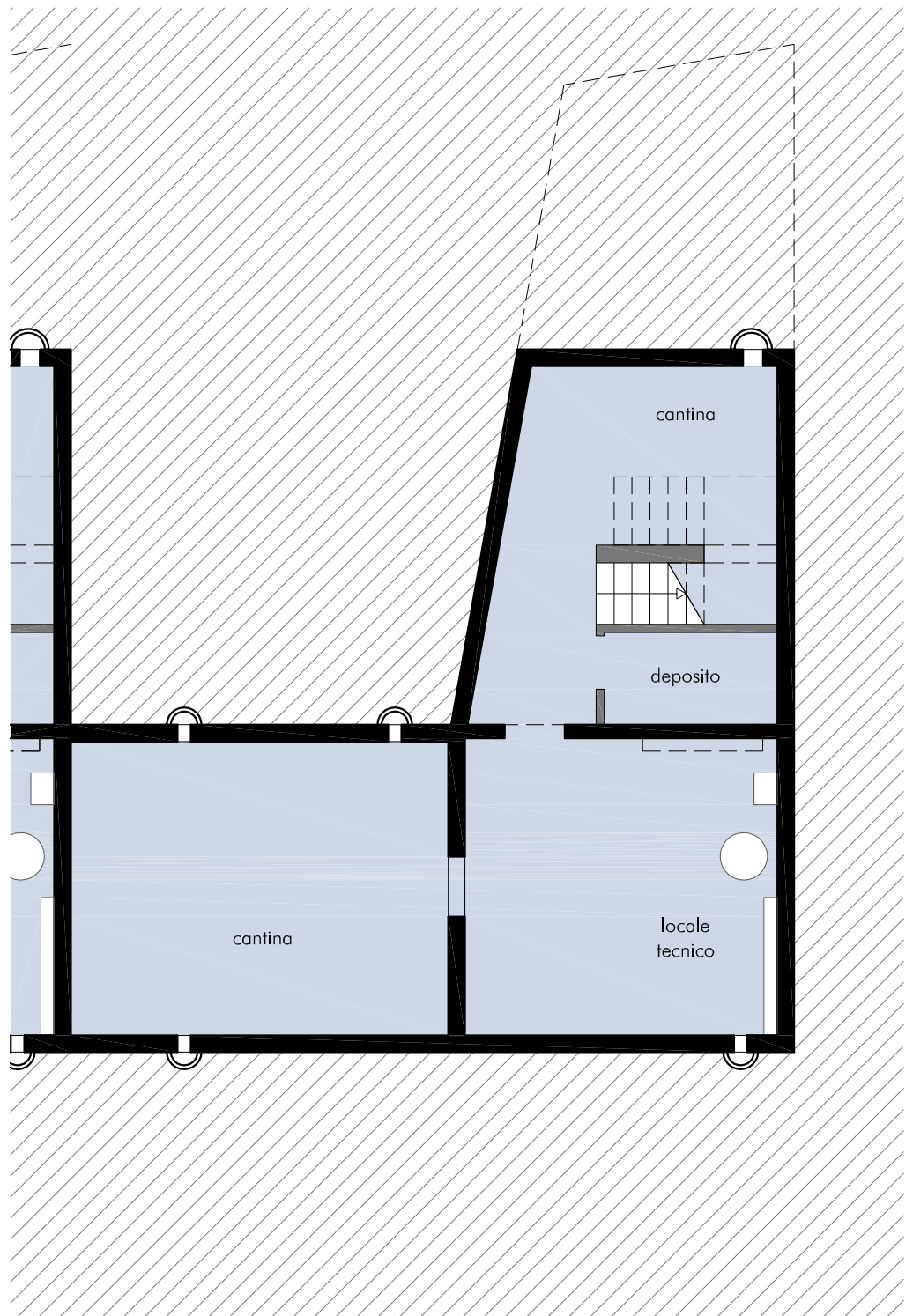


CASA 1

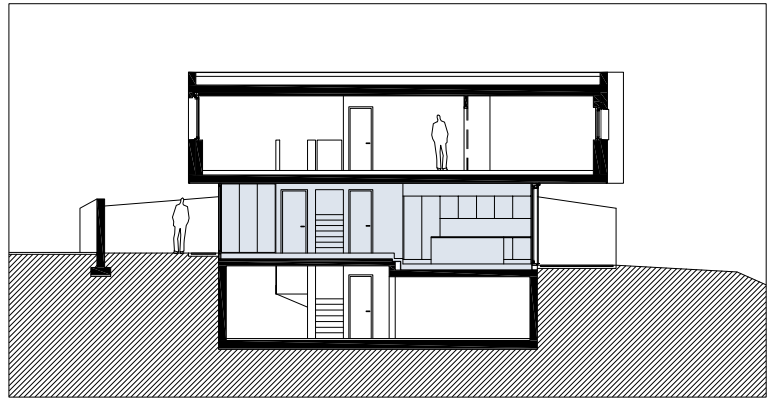
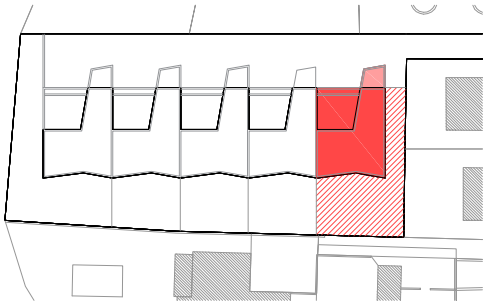


LIVELLO -1

SUN	CANTINA	15.10 m ²
	DEPOSITO	3.60 m ²
	LOCALE TECNICO	20.90 m ²
	CANTINA	25.00 m ²

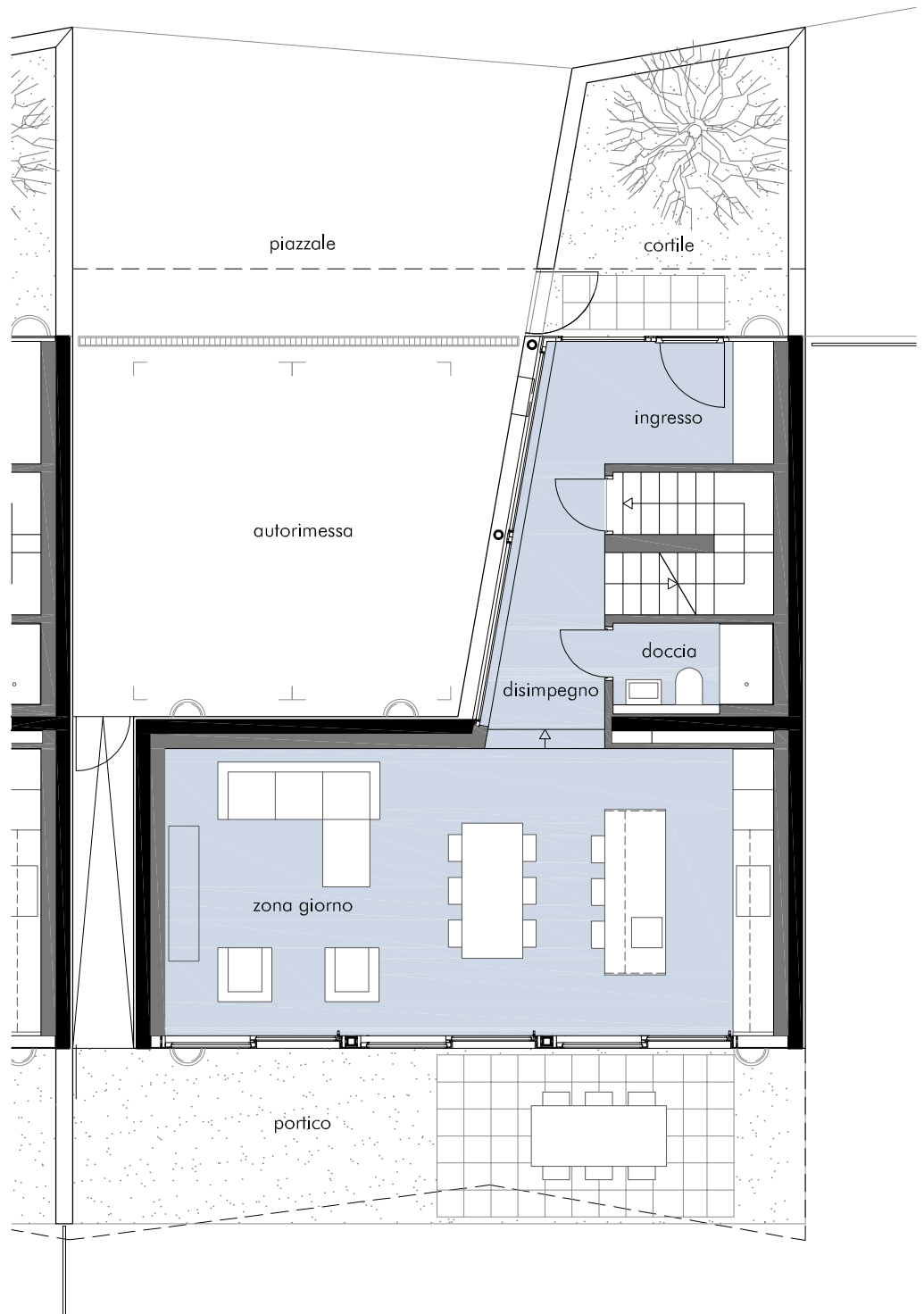


CASA 1

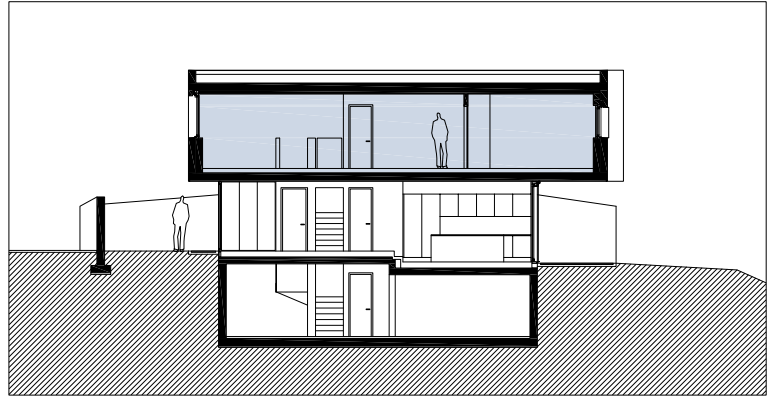
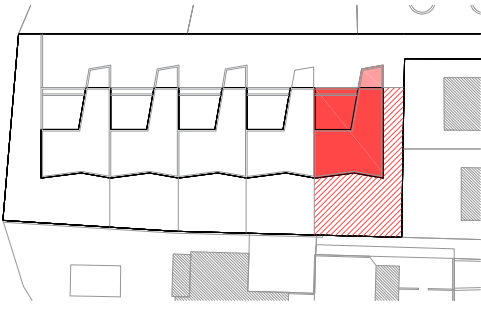


LIVELLO 0

SUN	INGRESSO	6.10 m ²
	DISIMPEGNO	5.90 m ²
	DOCCIA	2.90 m ²
	ZONA GIORNO	38.30 m ²
	CORTILE	13.20 m ²
	PORTICO	27.60 m ²



CASA 1



LIVELLO +1

SUN	STUDIO	8.30 m ²
	DISIMPEGNO	18.40 m ²
	DOCCIA	2.80 m ²
	LAVANDERIA	3.30 m ²
	BAGNO	6.20 m ²
	CAMERA	12.50 m ²
	CAMERA	12.20 m ²
	CAMERA PADRONALE	15.50 m ²
	TERRAZZA	34.70 m ²

