

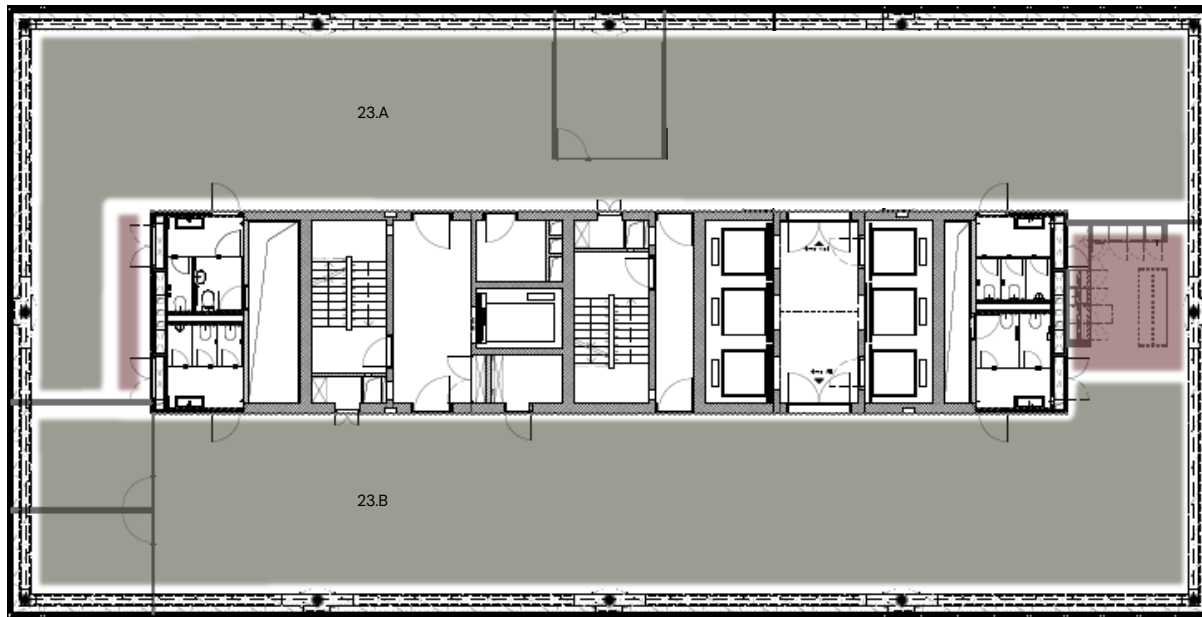
Grundrissplan Etage 22

Basel Messeturm



Grundrissplan Etage 23

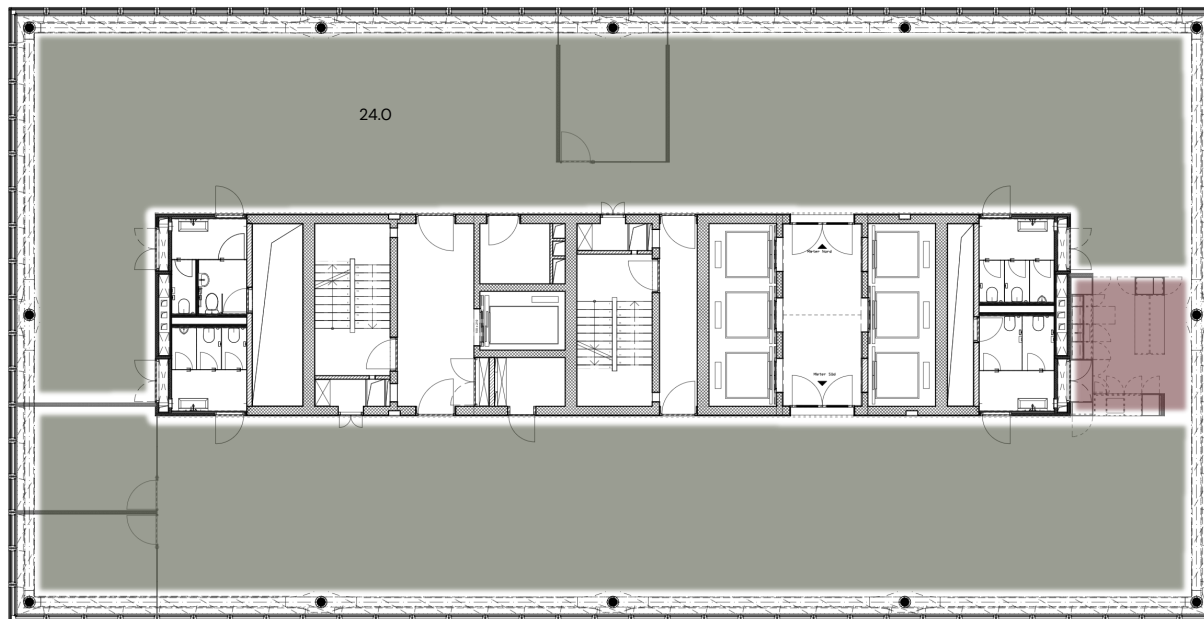
Basel Messeturm



- Flex Corporate
- Kitchen

Grundrissplan Etage 24

Basel Messeturm



- Flex Corporate
- Kitchen

Grundrissplan Etage 25

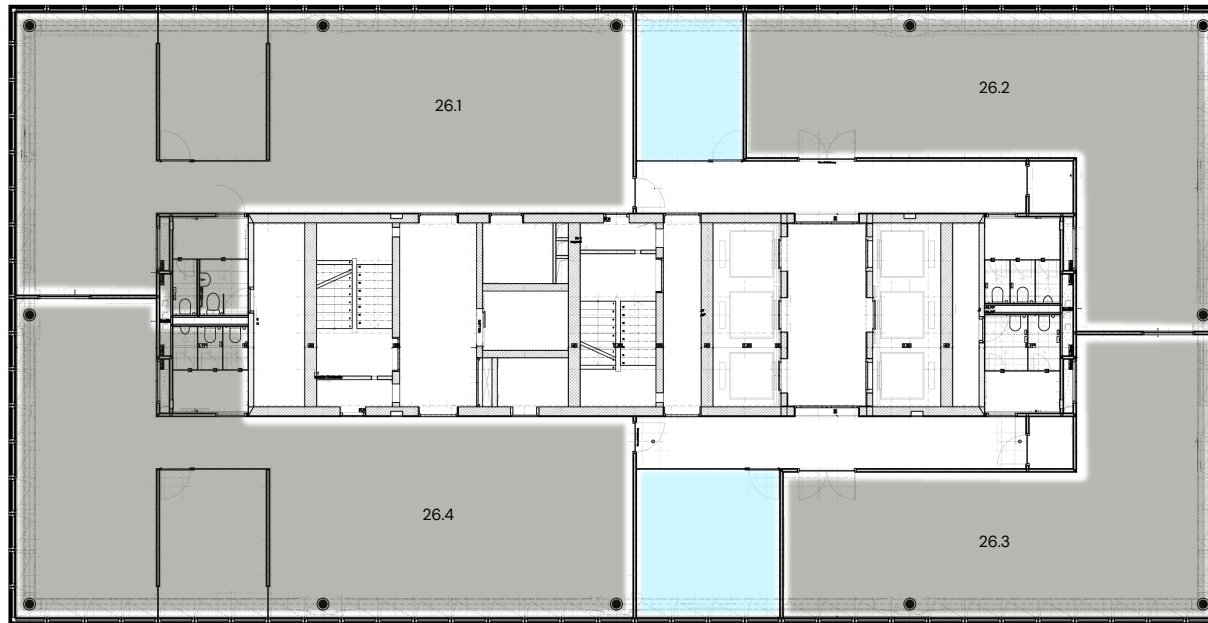
Basel Messeturm



- Flex Team
- Flex Rooms
- Shared Spaces
- Kitchen
- Lounge

Grundrissplan Etage 26

Basel Messeturm



- Flex Corporate
- Flex Rooms
- Optional Kitchen Position

Übersicht

Basel Messeturm

Raumnummer	Raumtyp	Raumgrösse	Raumkapazität*	Memberships*
22.03	Flex Team	27m ²	4	8
22.04	Flex Team	17m ²	2	4
22.05	Flex Team	23m ²	3	6
22.07	Flex Team	8m ²	1	2
22.08	Flex Team	8m ²	1	2
22.09	Flex Team	8m ²	1	2
22.10	Flex Team	8m ²	1	2
22.12	Flex Team	17m ²	2	4
22.13	Flex Team	27m ²	4	8
22.14	Flex Team	28m ²	4	8
22.15	Flex Team	40m ²	6	12
22.16	Flex Team	27m ²	4	8
23.A	Flex Corporate	335m ²	30	60
23.B	Flex Corporate	335m ²	30	60
24.0	Flex Corporate	670m ²	60	120

Übersicht

Basel Messeturm

Raumnummer	Raumtyp	Raumgrösse	Raumkapazität*	Memberships*
25.02	Flex Team	26m ²	4	8
25.04	Flex Team	59m ²	10	20
25.05	Flex Team	26m ²	4	8
25.06	Flex Team	26m ²	4	8
25.07	Flex Team	26m ²	4	8
25.08	Flex Team	16m ²	2	4
25.09	Flex Team	16m ²	2	4
25.10	Flex Team	32m ²	5	10
25.13	Flex Team	26m ²	4	8
25.15	Flex Team	8m ²	1	2
25.16	Flex Team	16m ²	2	4
25.17	Flex Team	8m ²	1	2
26.01	Flex Corporate	162m ²	20	40
26.02	Flex Corporate	106m ²	16	32
26.03	Flex Corporate	95m ²	14	28
26.04	Flex Corporate	168m ²	20	40