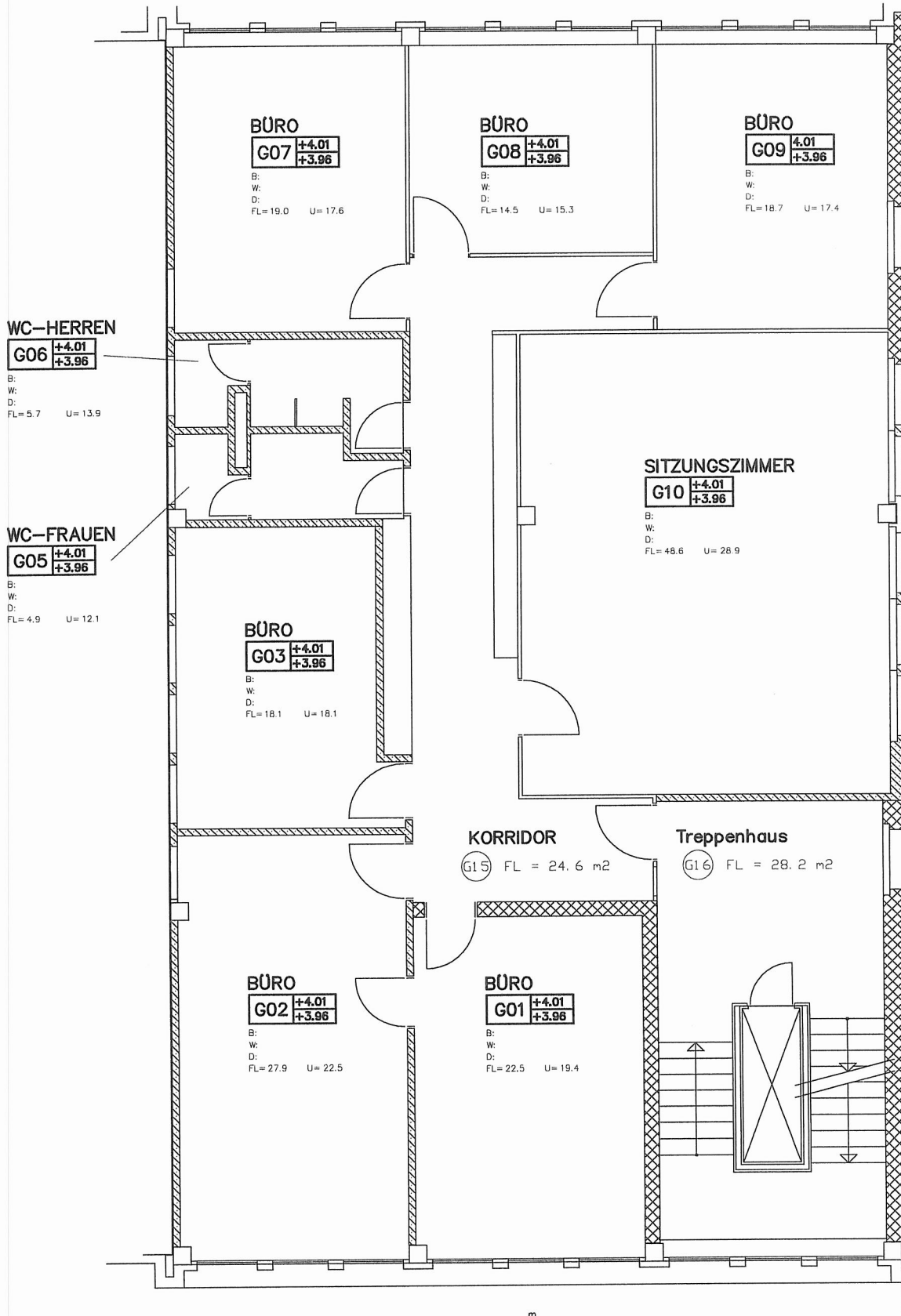


Bau 70 5. OG



WC-HERREN
G06

+4.01
+3.96

 B:
 W:
 D:
 FL= 5.7 U= 13.9

WC-FRAUEN
G05

+4.01
+3.96

 B:
 W:
 D:
 FL= 4.9 U= 12.1

BÜRO
G07

+4.01
+3.96

 B:
 W:
 D:
 FL= 19.0 U= 17.6

BÜRO
G08

+4.01
+3.96

 B:
 W:
 D:
 FL= 14.5 U= 15.3

BÜRO
G09

4.01
+3.96

 B:
 W:
 D:
 FL= 18.7 U= 17.4

SITZUNGSZIMMER
G10

+4.01
+3.96

 B:
 W:
 D:
 FL= 48.6 U= 28.9

BÜRO
G03

+4.01
+3.96

 B:
 W:
 D:
 FL= 18.1 U= 18.1

KORRIDOR
 G15 FL = 24.6 m²

Treppenhaus
 G16 FL = 28.2 m²

BÜRO
G02

+4.01
+3.96

 B:
 W:
 D:
 FL= 27.9 U= 22.5

BÜRO
G01

+4.01
+3.96

 B:
 W:
 D:
 FL= 22.5 U= 19.4

