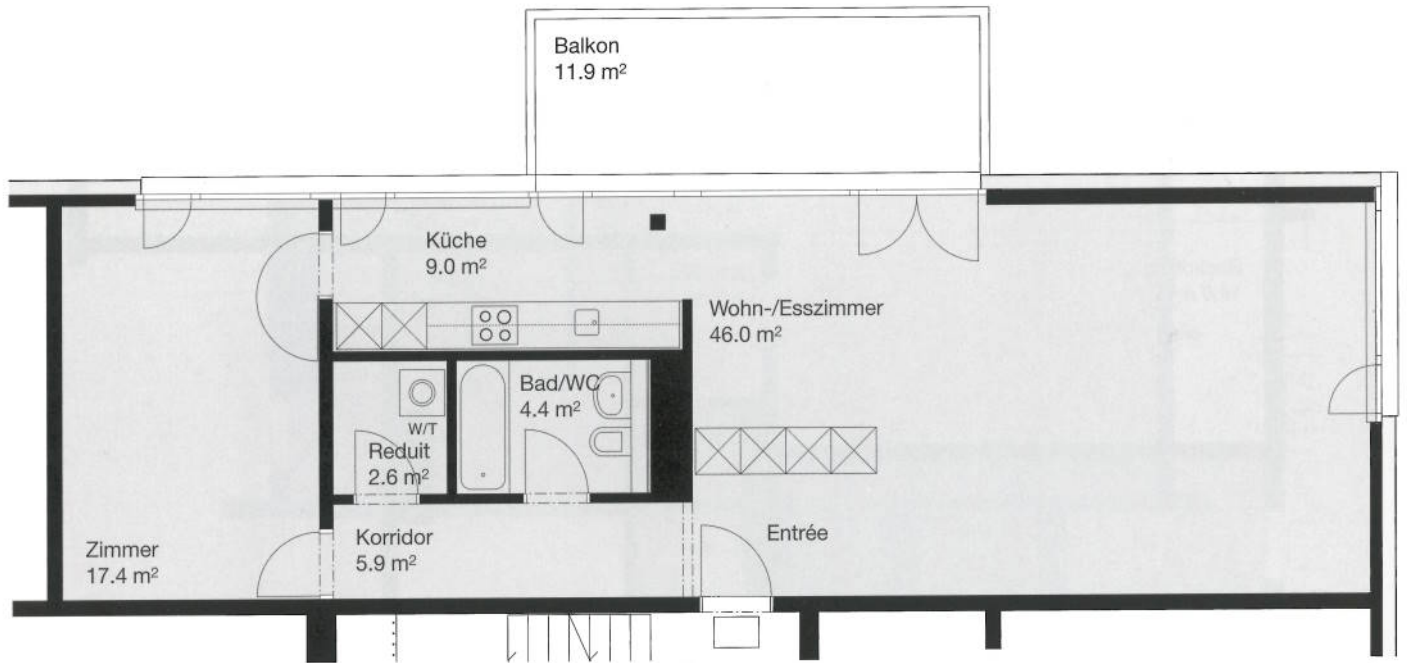
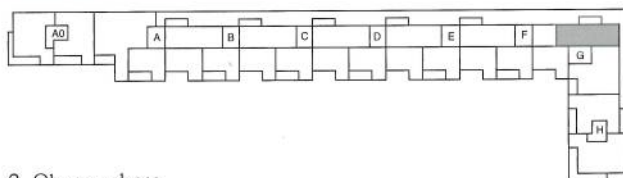


2 1/2-Zimmer-Wohnung, Typ 2d, ca. 85 m²

Stockwerke: 2. OG 4.OG
 Wohnungs-Nummern: G.2.1 G.4.1

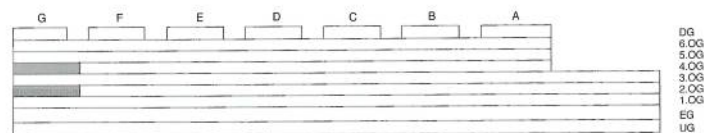


m | 1 | 2 | 3 | 4 | 5 | Masstab 1:100



2. Obergeschoss

Westansicht



DG
 6.OG
 5.OG
 4.OG
 3.OG
 2.OG
 1.OG
 EG
 UG