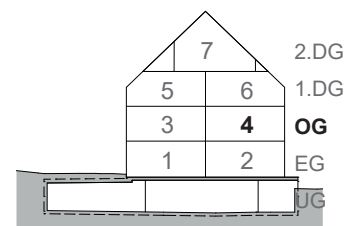
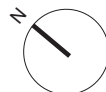


## WOHNUNG 4

### 4 ½-Zimmer-Wohnung

Bruttowohnfläche	121.5 m <sup>2</sup>
Nettowoohnfläche	116.0 m <sup>2</sup>
Balkon	12.5 m <sup>2</sup>
Abstell Balkon	2.0 m <sup>2</sup>
Keller	13.0 m <sup>2</sup>



l<sub>m</sub> l<sub>1</sub> l<sub>2</sub> l<sub>3</sub> l<sub>4</sub> l<sub>5</sub>

MST. 1:100