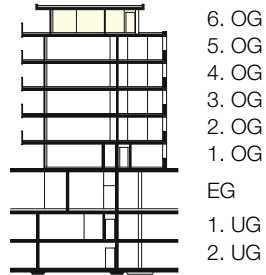
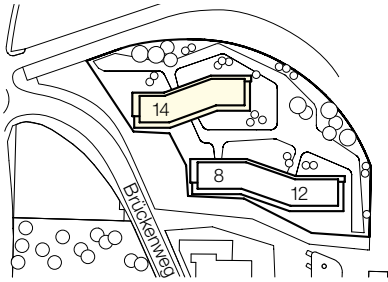
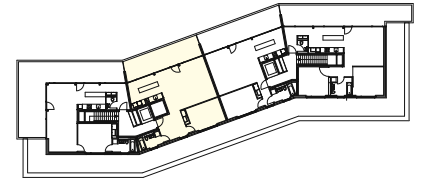


Liegenschaft	Brückenweg 8, 10, 12, 14; 3930 Visp
Haus	Brückenweg 14 (a)
Lage	6. Obergeschoss
Objekt	2.5-Zimmerwohnung
Fläche	87.3 m ²
Objekt-Nummer	27000.01.1062



6. OG
5. OG
4. OG
3. OG
2. OG
1. OG
EG
1. UG
2. UG



Situation

Schnitt

Übersicht

Grundriss
Masstab 1:100

