


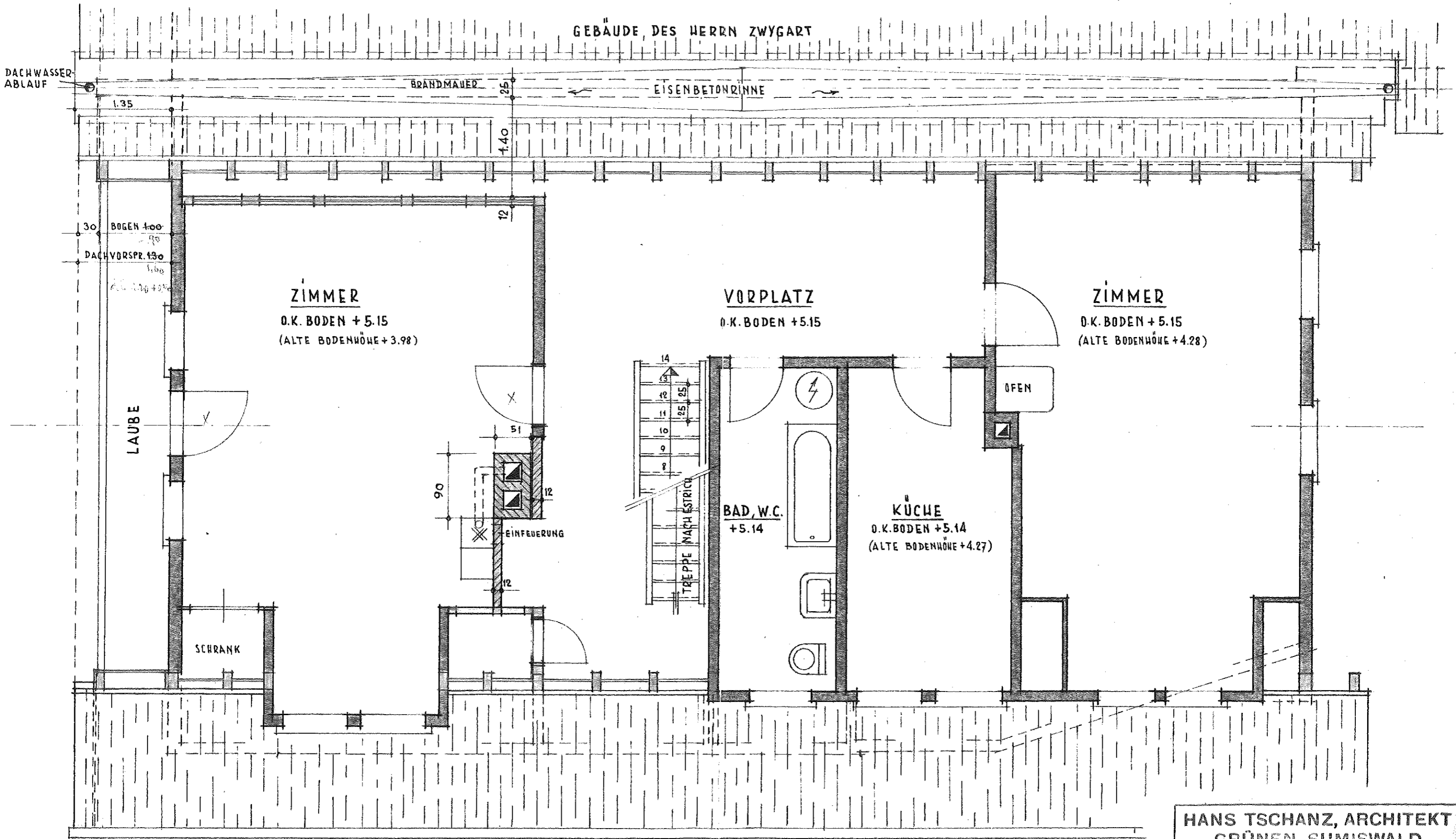


SCHWESTERN WIEDMER, HANDLUNG, WASEN I.E.
 WOHN-UND GESCHÄFTSHAUS
 DACHSTOCK-GRUNDRISS M.1:50, NEUER ZUSTAND

7221

- LEGENDE:
-  BESTEHEND
 -  NEUE HOLZKONSTRUKTION
 -  NEUES BACKSTEINMAUERW.



HANS TSCHANZ, ARCHITEKT GRÜNEN-SUMISWALD			
PLAN No.	MASSTAB	DATUM	GEZ.
93 / 12	1:50	26. FEBR. 1953	WI