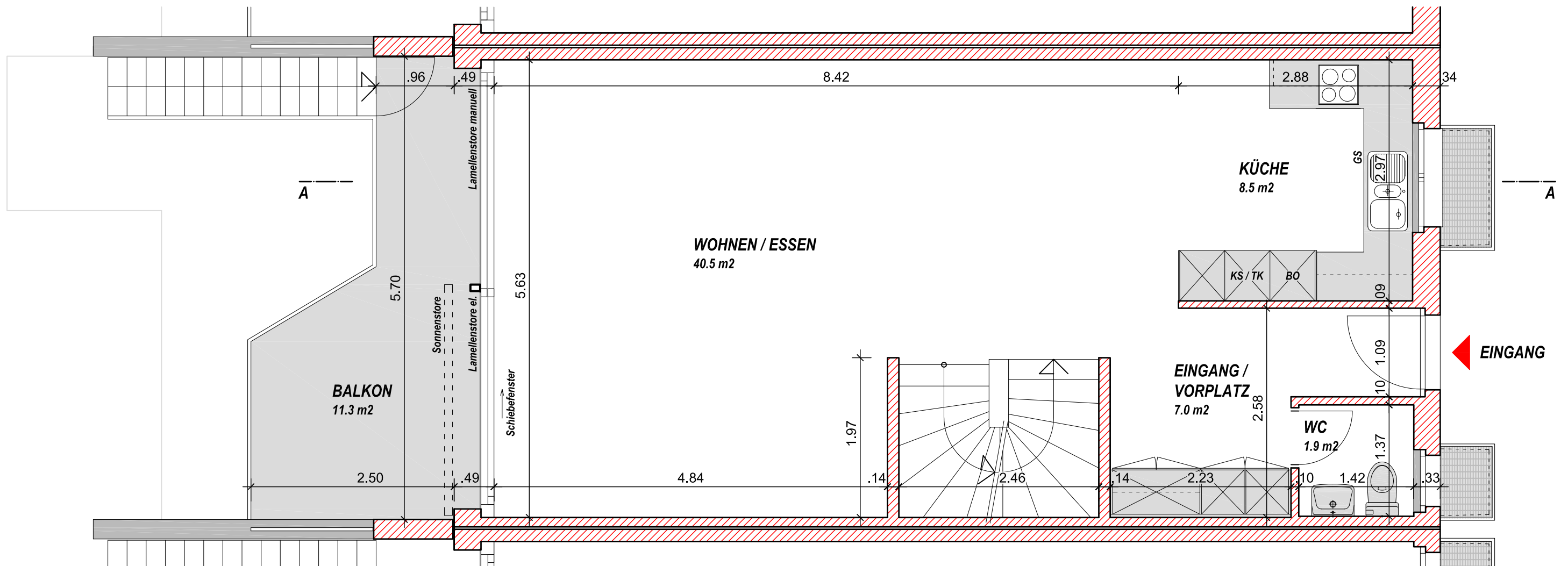
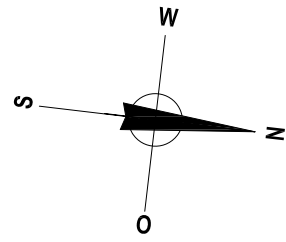


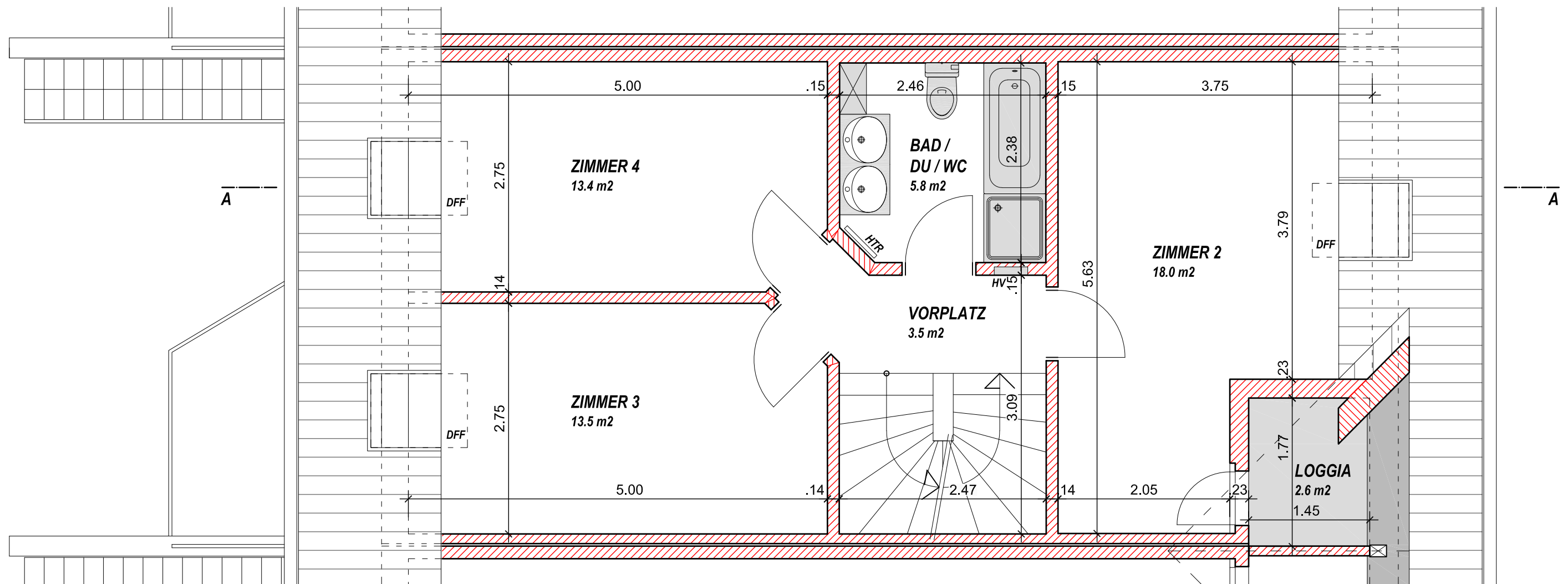
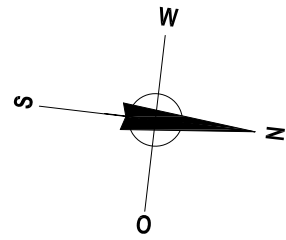
RAUMPROGRAMM

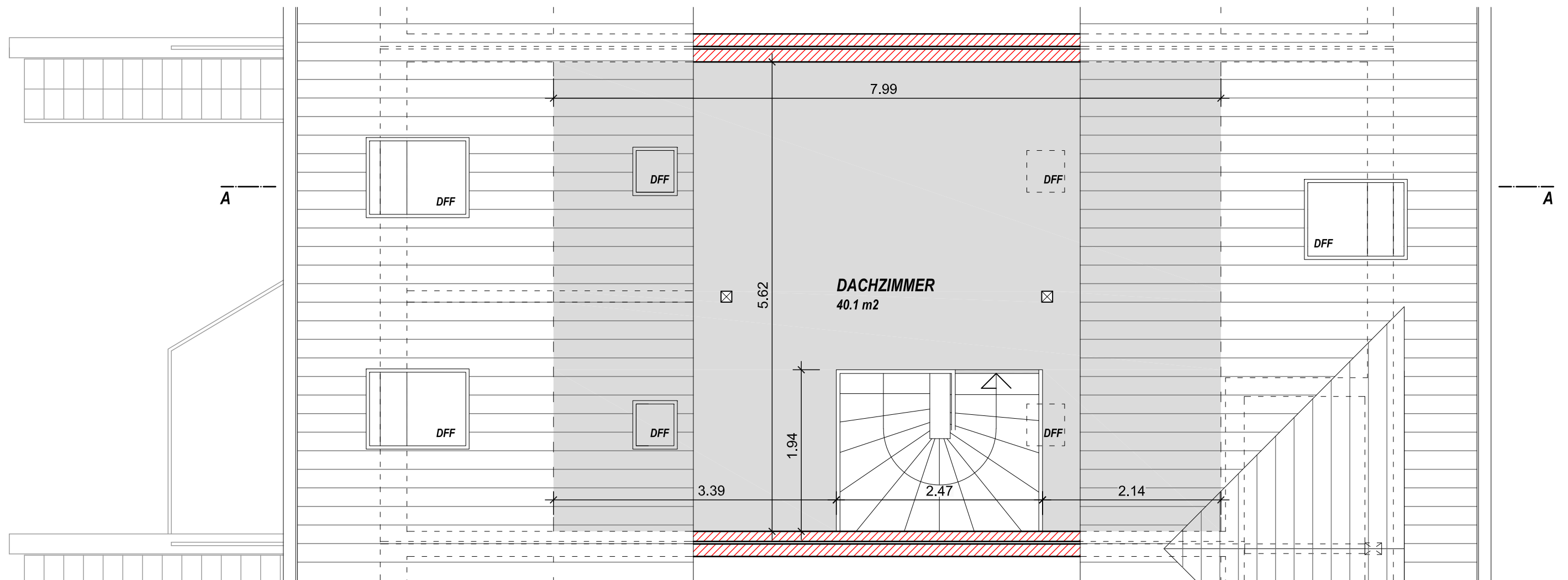
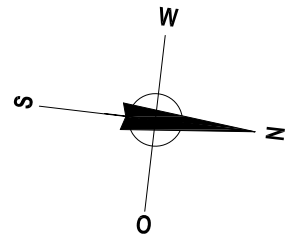
- EINGANG / VORPLATZ	7.0 M2
- WC	1.9 M2
- WOHNEN / ESSEN	40.5 M2
- KÜCHE	8.5 M2
- TOTAL	57.9 M2
- BALKON	11.3 M2



RAUMPROGRAMM

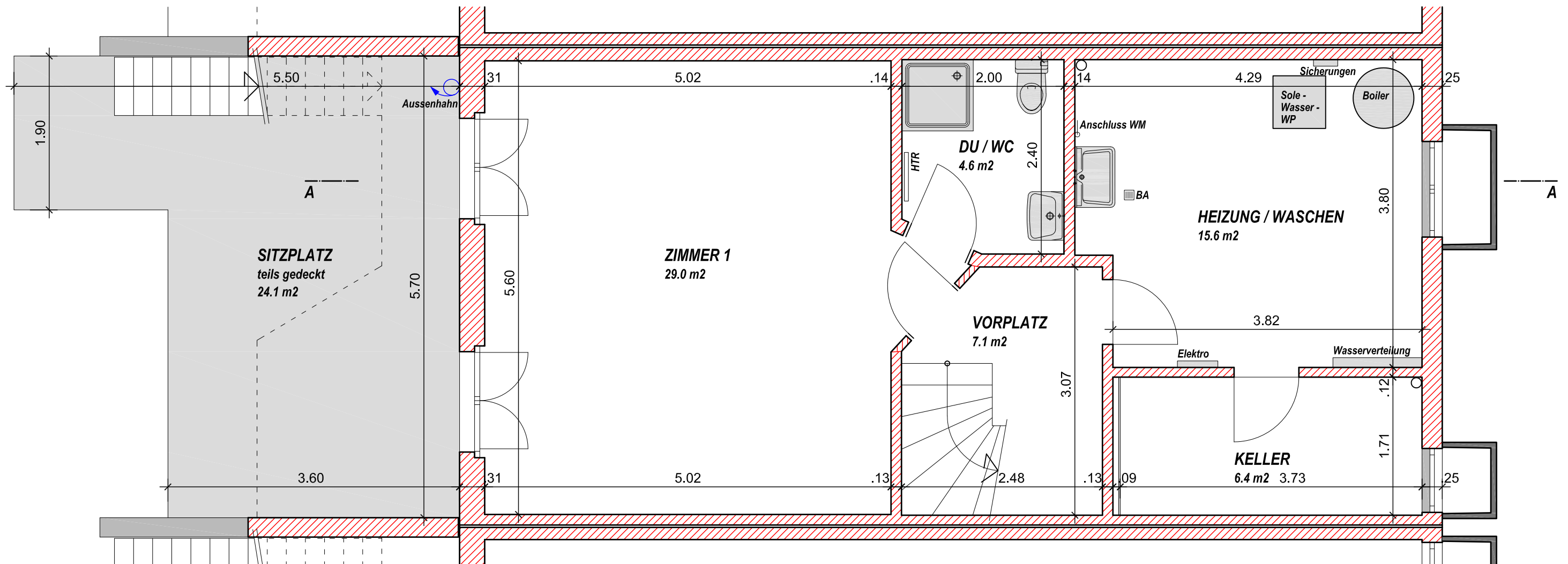
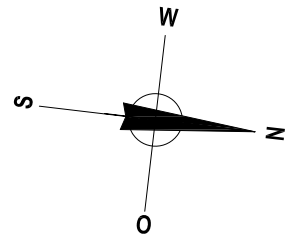
- VORPLATZ	3.5 M2
- BAD / DU / WC	5.8 M2
- ZIMMER 2	18.0 M2
- ZIMMER 3	13.5 M2
- ZIMMER 4	13.4 M2
- TOTAL	54.2 M2
- LOGGIA	2.6 M2





RAUMPROGRAMM

- VORPLATZ	7.1 M2
- DU / WC	4.6 M2
- ZIMMER 1	29.0 M2
- TOTAL	40.7 M2
- HEIZUNG / WASCHEN	15.6 M2
- KELLER	6.4 M2
- TOTAL	22.0 M2
- SITZPLATZ teils gedeckt	24.1 M2



- DACHAUFBAU
- Tonziegel
  - Ziegellattung 48 / 24 mm
  - Konterlattung 45 / 50 mm
  - Sparren 12 / 20 cm dazwischen
  - Isolierunterdach Gantner 100
  - Täfer 13 mm

