

2.06

5950 mm

ca. 53 m²

9000 mm

2670 mm

4590 mm

4290

4300

180

2500

180

4300

4290

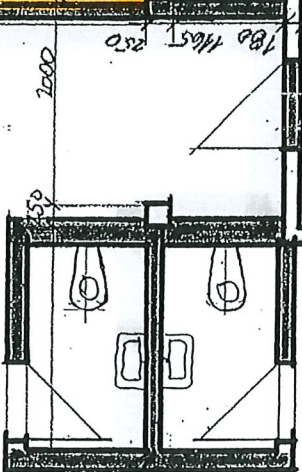
BCF CA 78 m²

1.133. - / 17. +
+ 100. - / 17. + abt. NK

BCF CA 69 m²

1.006. - / 17. +
+ 100. - / 17. + NK abt.

5140



5905

425

250

1430

1340

5105

1800

4270

4290