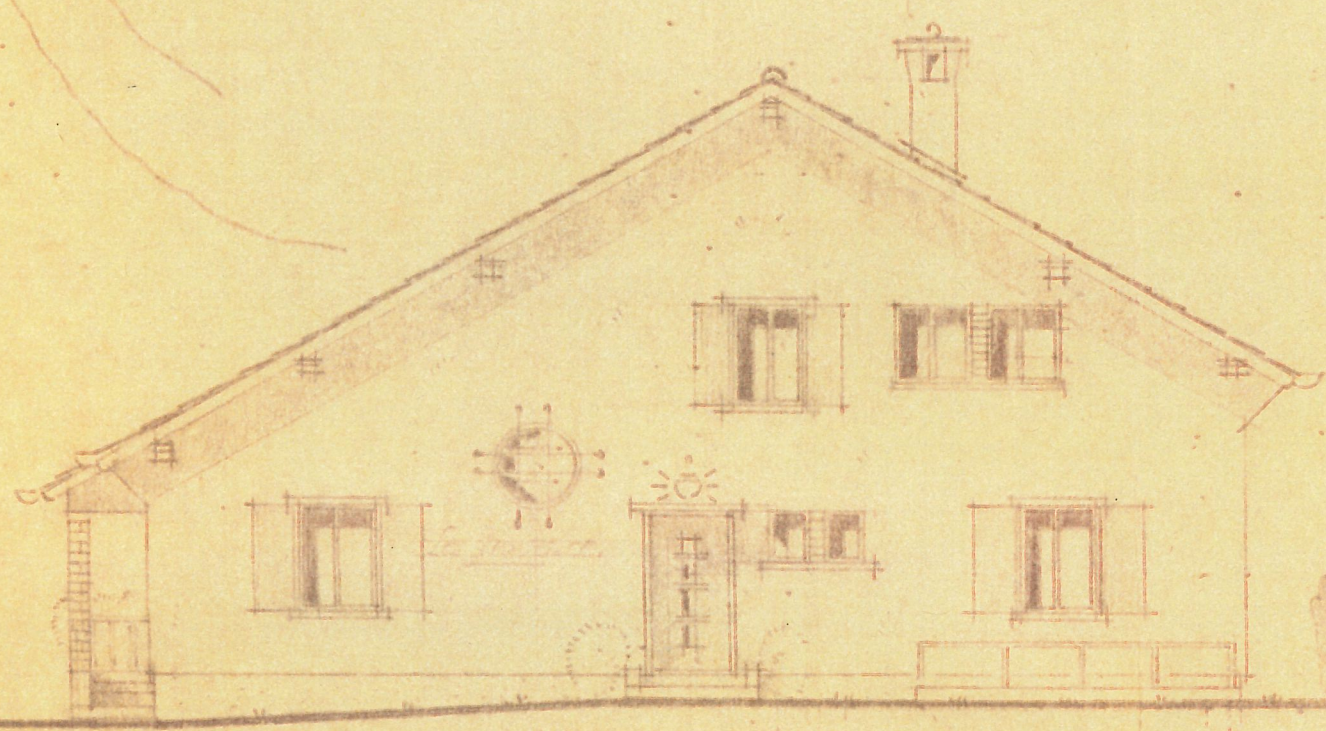


M. SCHAUB
ARCHITECTE
ENTREPRENEUR DIP.
BAYERNE

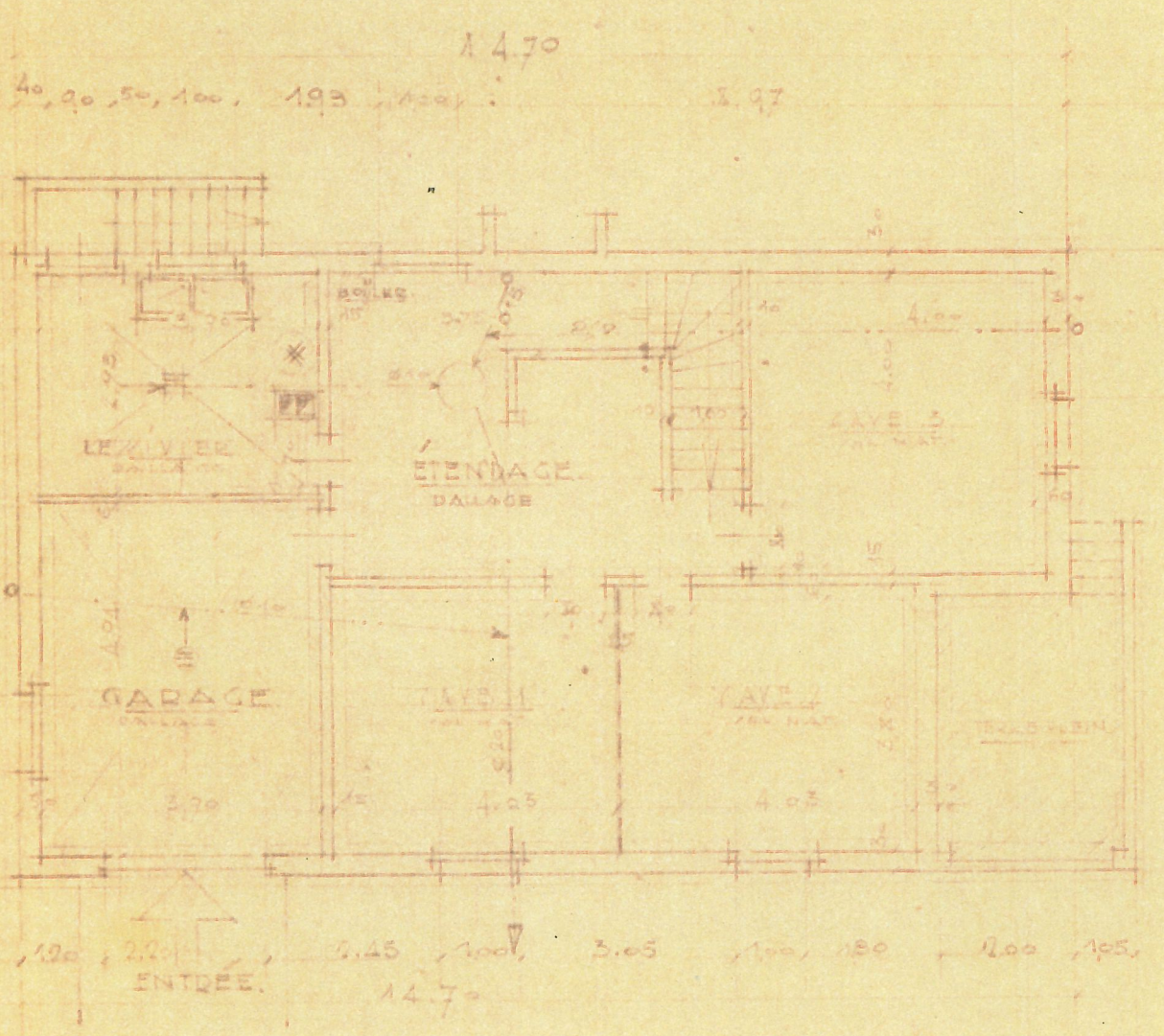
L'architecte:
Le propriétaire:

M. SCHAUB
ARCHITECTE
ENTREPRENEUR DIP.
BAYERNE

po. *M. Schaub*



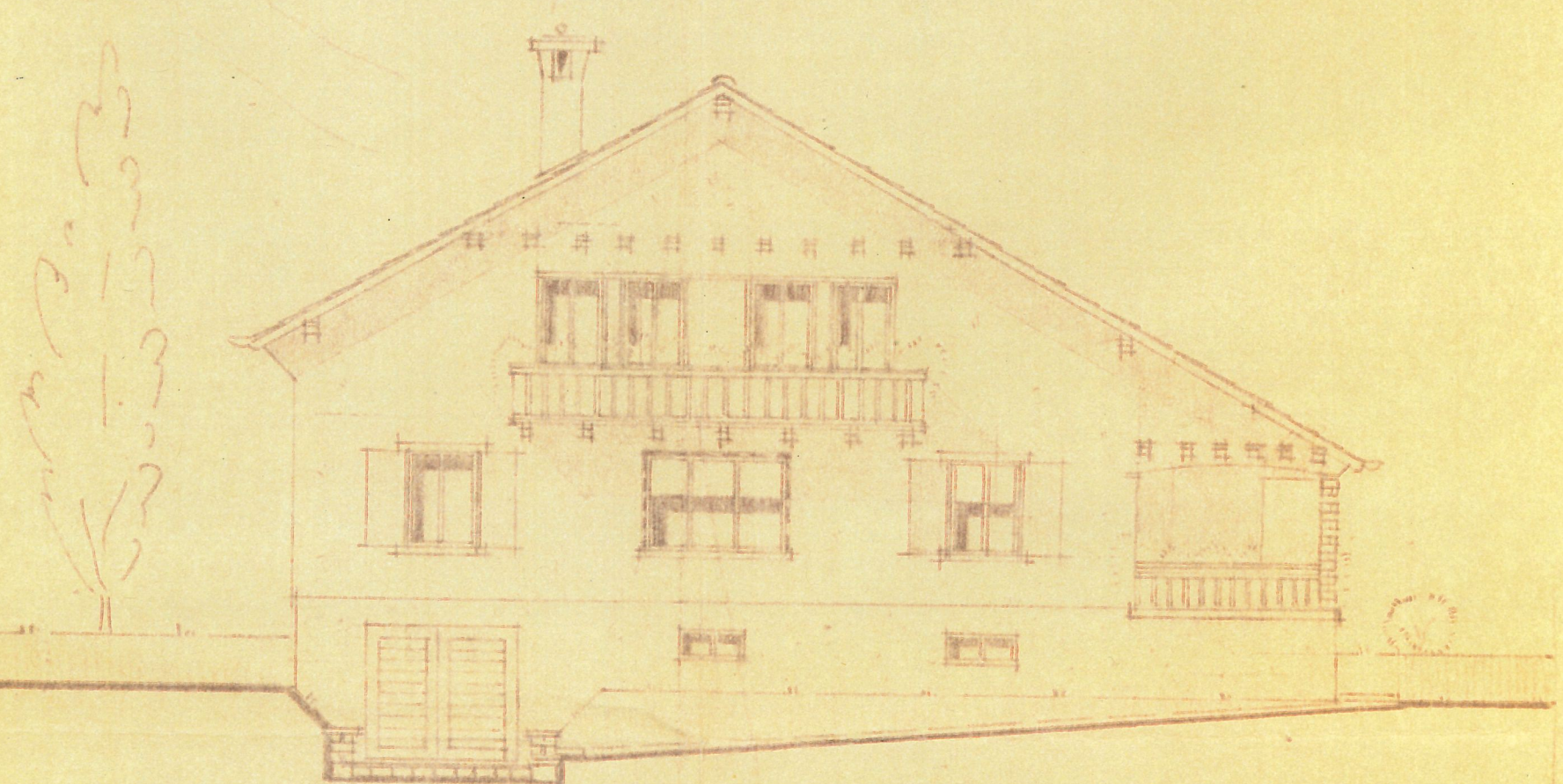
EST.



ECH. 1/100^e

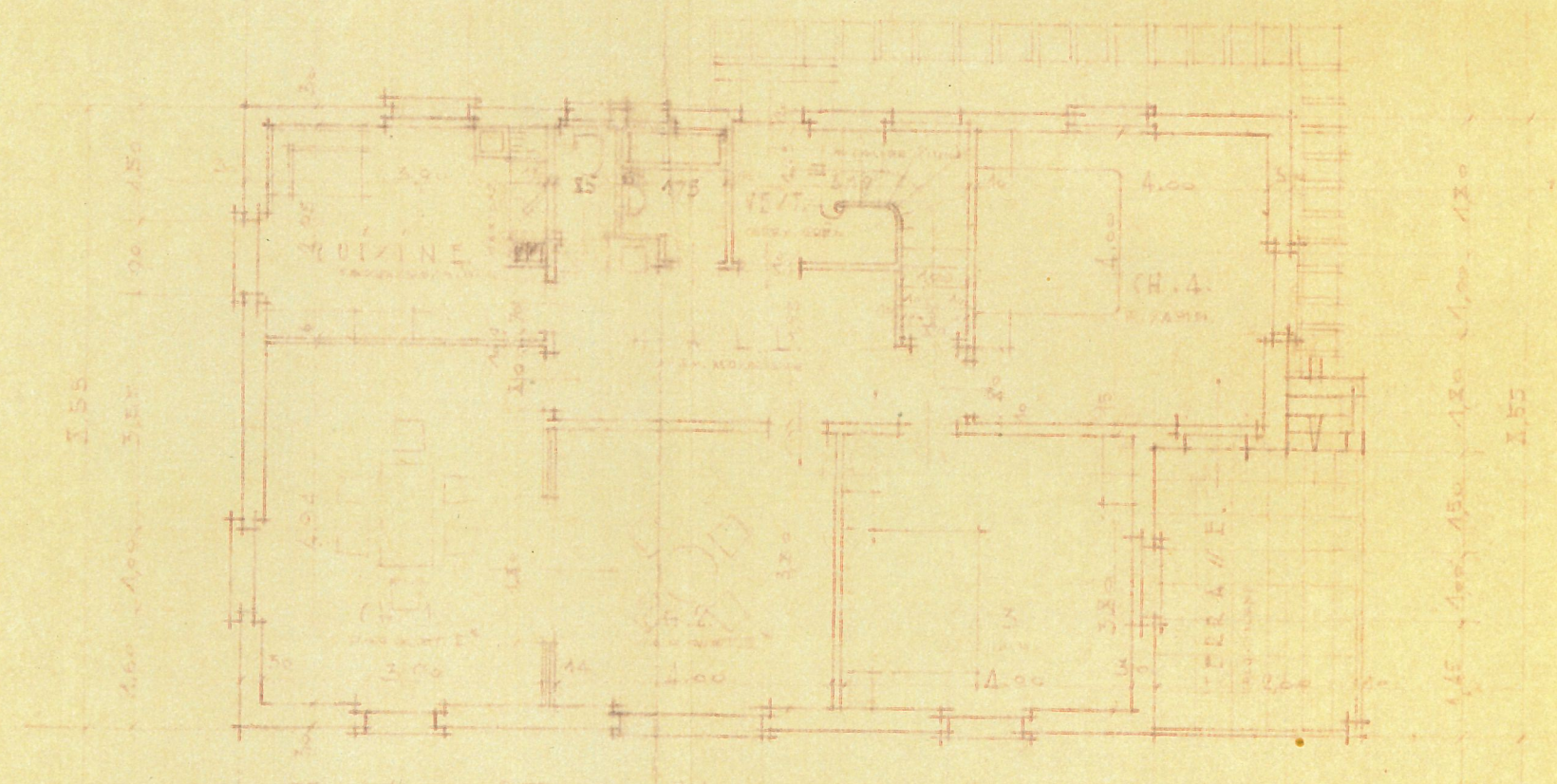
M. SCHAUB

PROJET (CATÉVINE) : 2 1 9 7 1 2



F A C A D E == OUEST

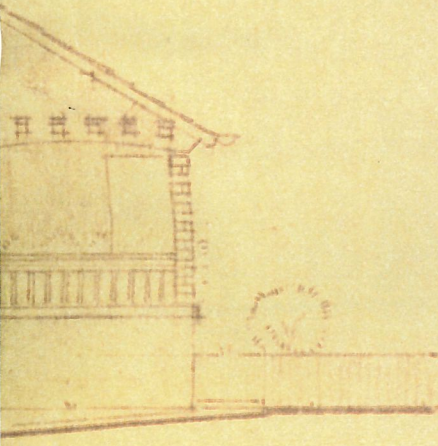
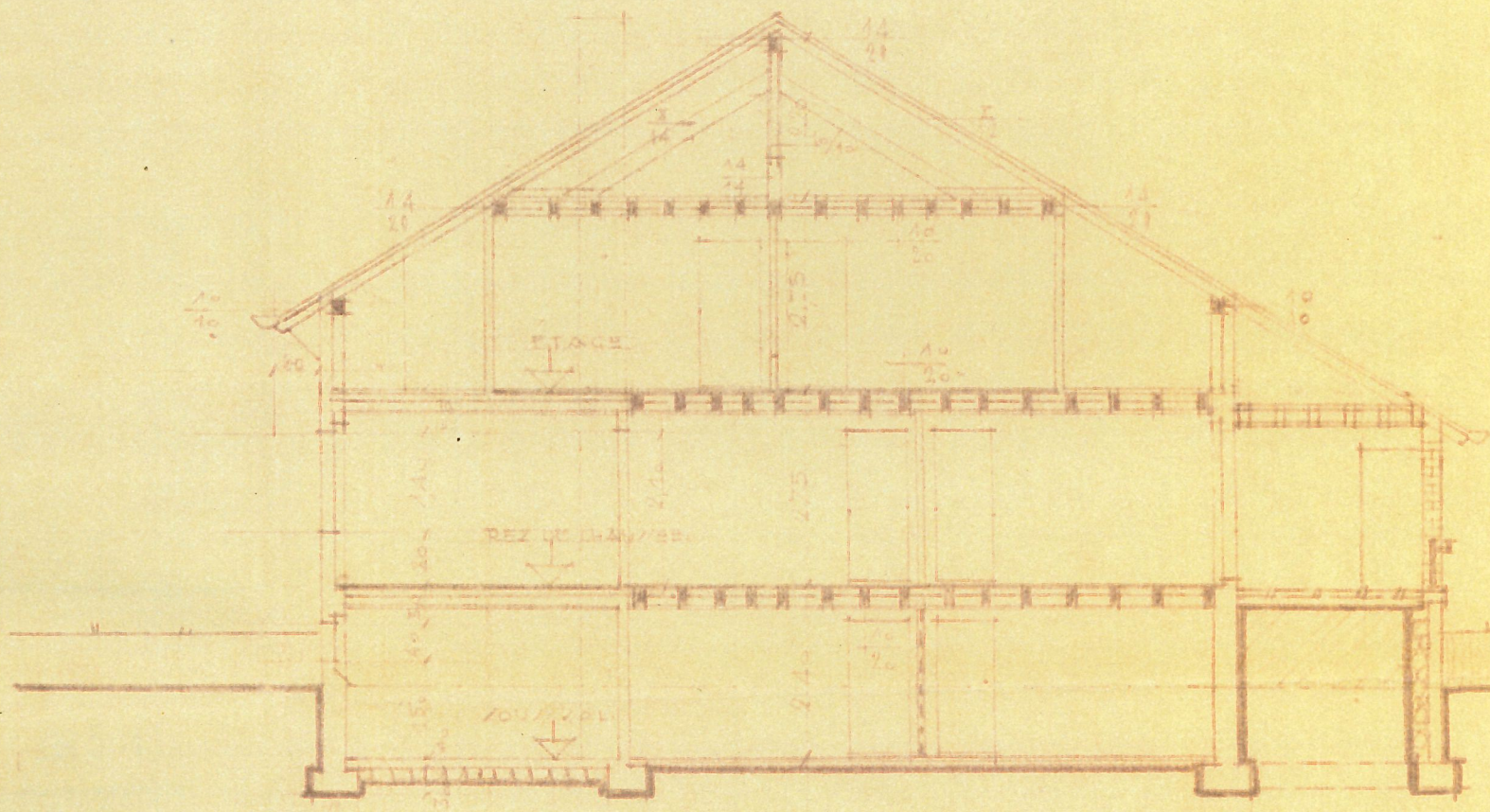
1,65 1,100 1,83,60 1,27 1,94 1,20 1,90 1,38 1,30 1,65



2 1 9 7 1 2 - (C A T É V I N E)

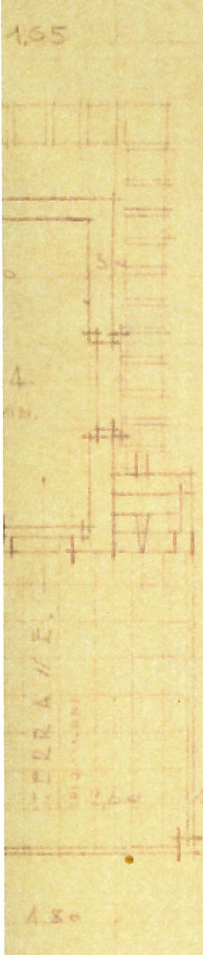
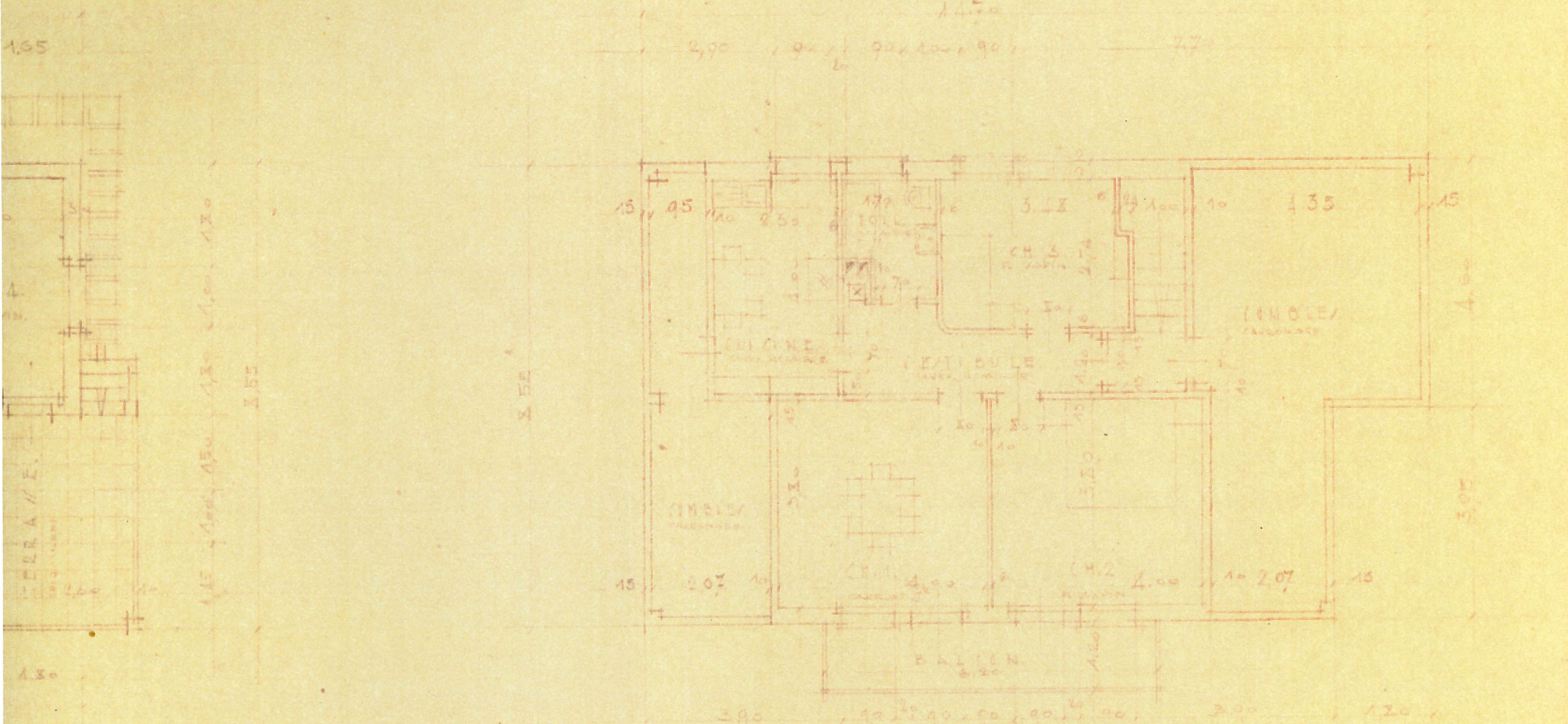
APPARTEMENT A PAYERNE.

NO 040.



QUEST

(I U) I.



E T A G E.

PAYERNE 1915