

Appartement B02

4 1/2 pièces


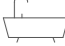


123.00 m² de surface habitable brute

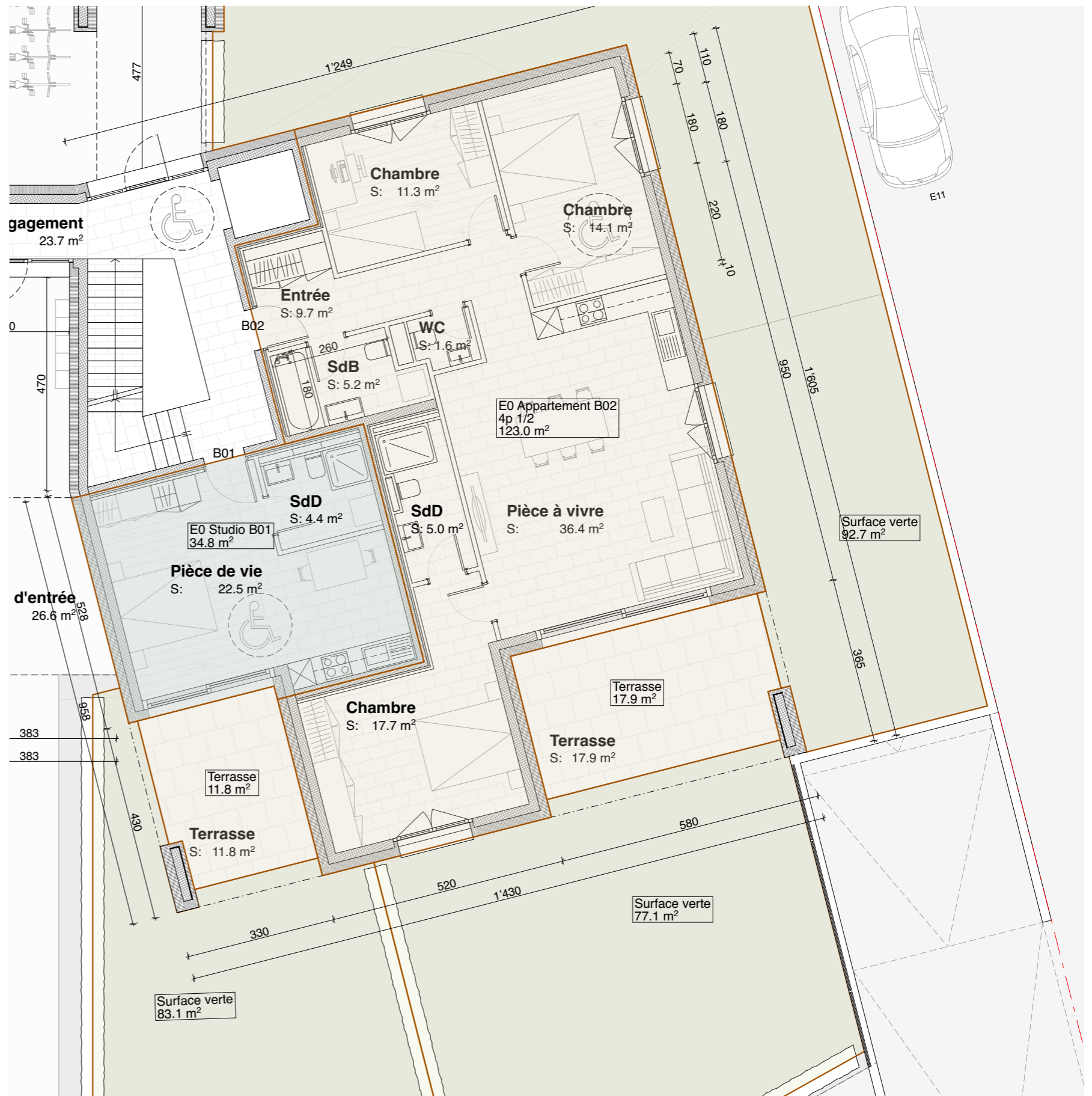
17.90 m² de surface de terrasse

169.80 m² de surface verte

129.00 m² de surface de vente (brute pondéré)

(Surface habitable brute + 1/3 terrasse)

-  3 chambres, séjour, cuisine et coin à manger
-  2 salles d'eau et 1 wc visiteur
-  2 places de parking
Obligatoires en sus
-  1 cave



- E3
- E2
- E1
- R



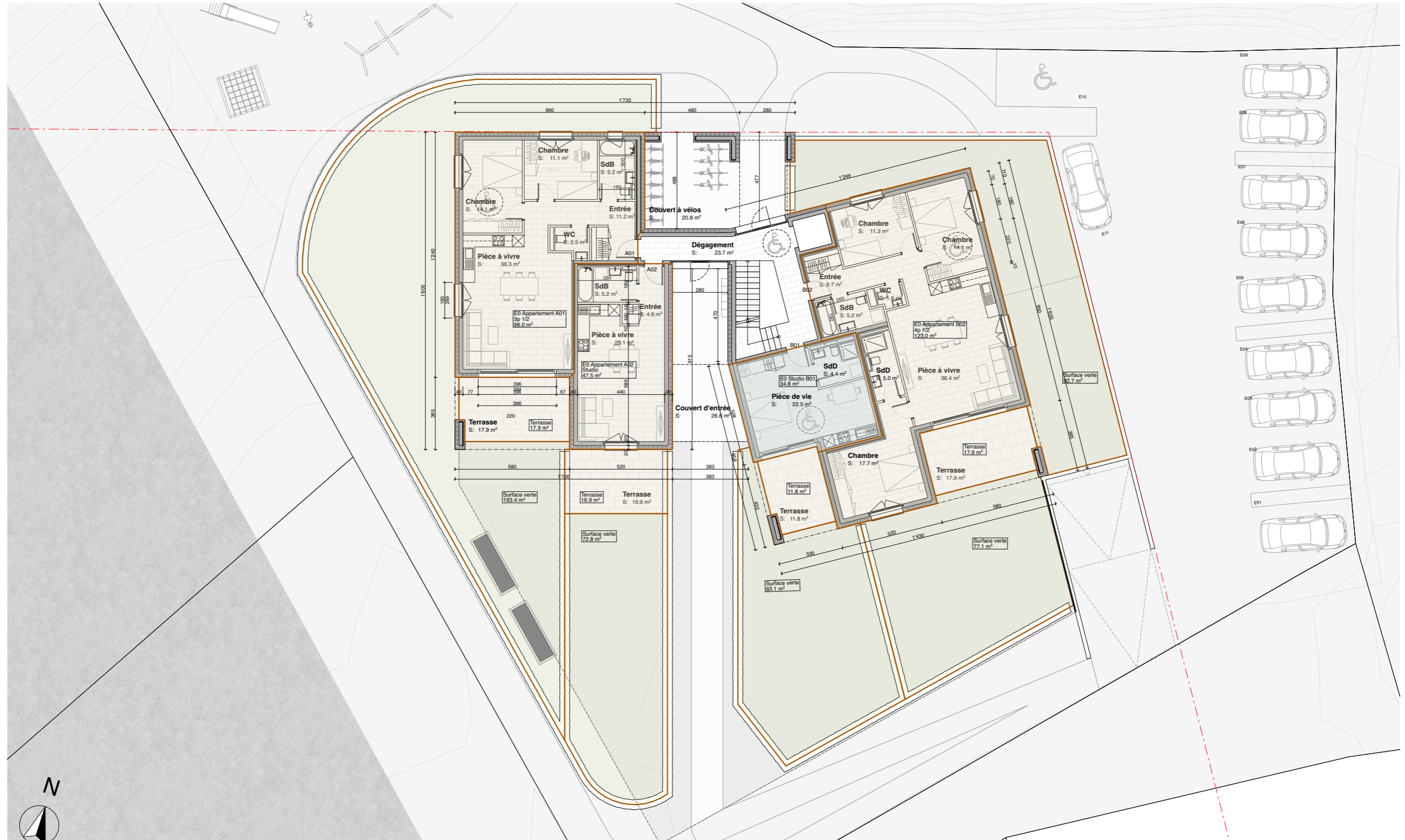
B02_3.5

E0 Appartement

Projet Portàchon
Parcelle 11208
Rue du puit du géant, 1950 Sion

format A3	date 29.12.25	échelle 1:100
--------------	------------------	------------------

Appartement B02



- E3
- E2
- E1
- R

