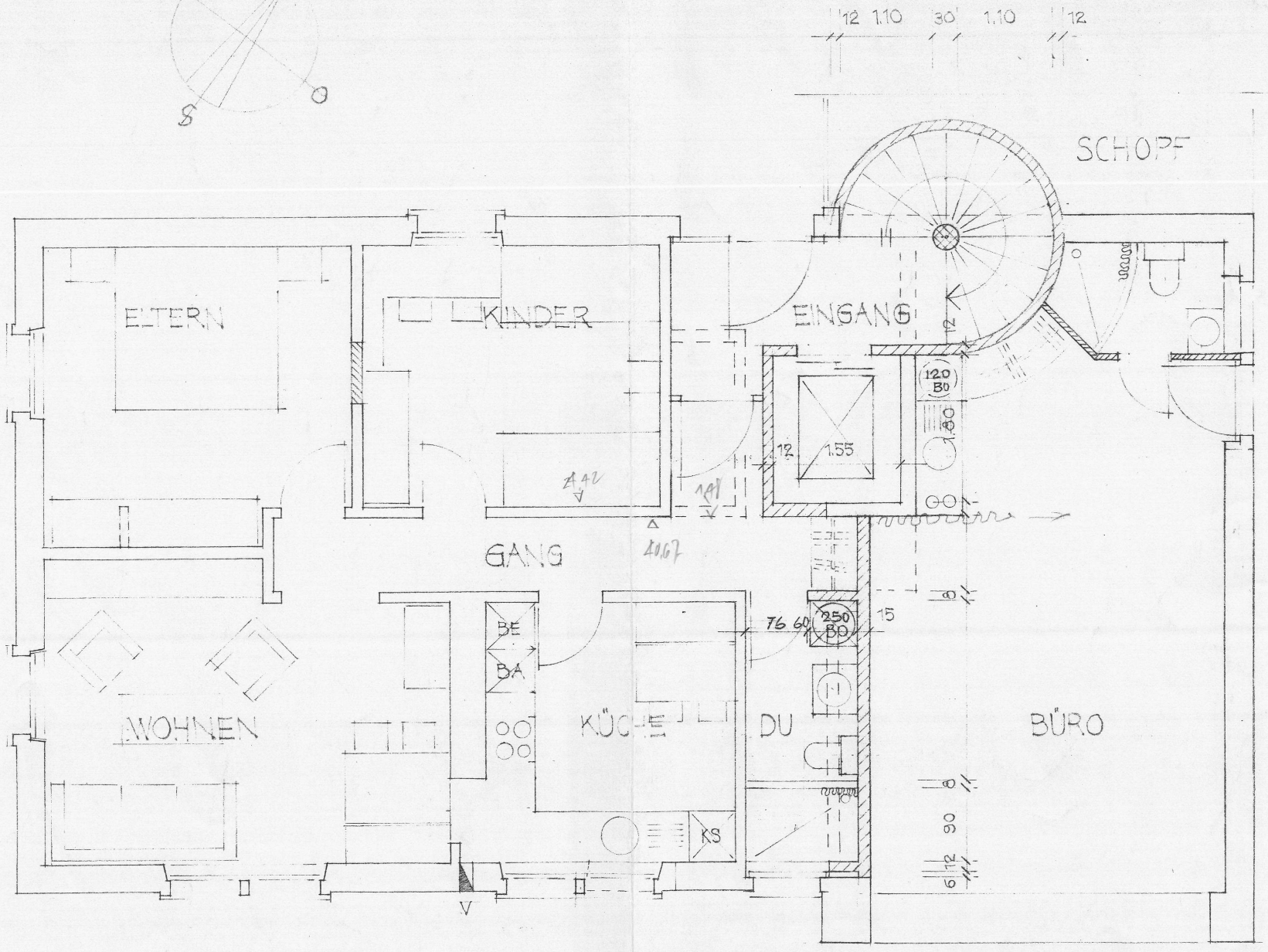
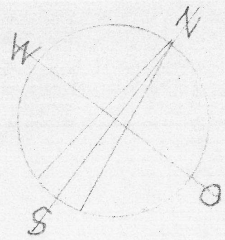


B13 BIRCHER AG MILCHHANDLUNG ROMBACH | BESTAUSUMBAU UND NEUBAU

KARL BLATTNER, ARCHITEKT
5004 KÜTTIGEN | TEL. 377747
DIM. 42 x 30
DAT. 9.3.82 UB
REV. 24.3.82 UB

1. OG UMBAU 67m²
Studio/Reizo 81m²

NEU
ABBRUCH



3,04

7,03

10,56