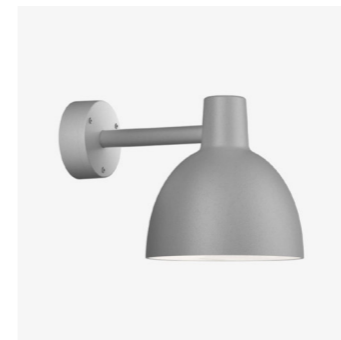
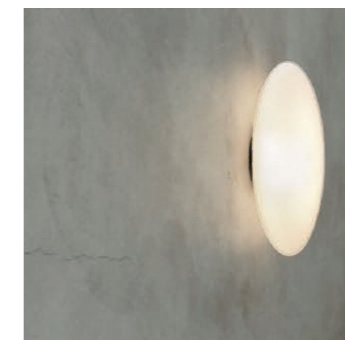


Ankommen

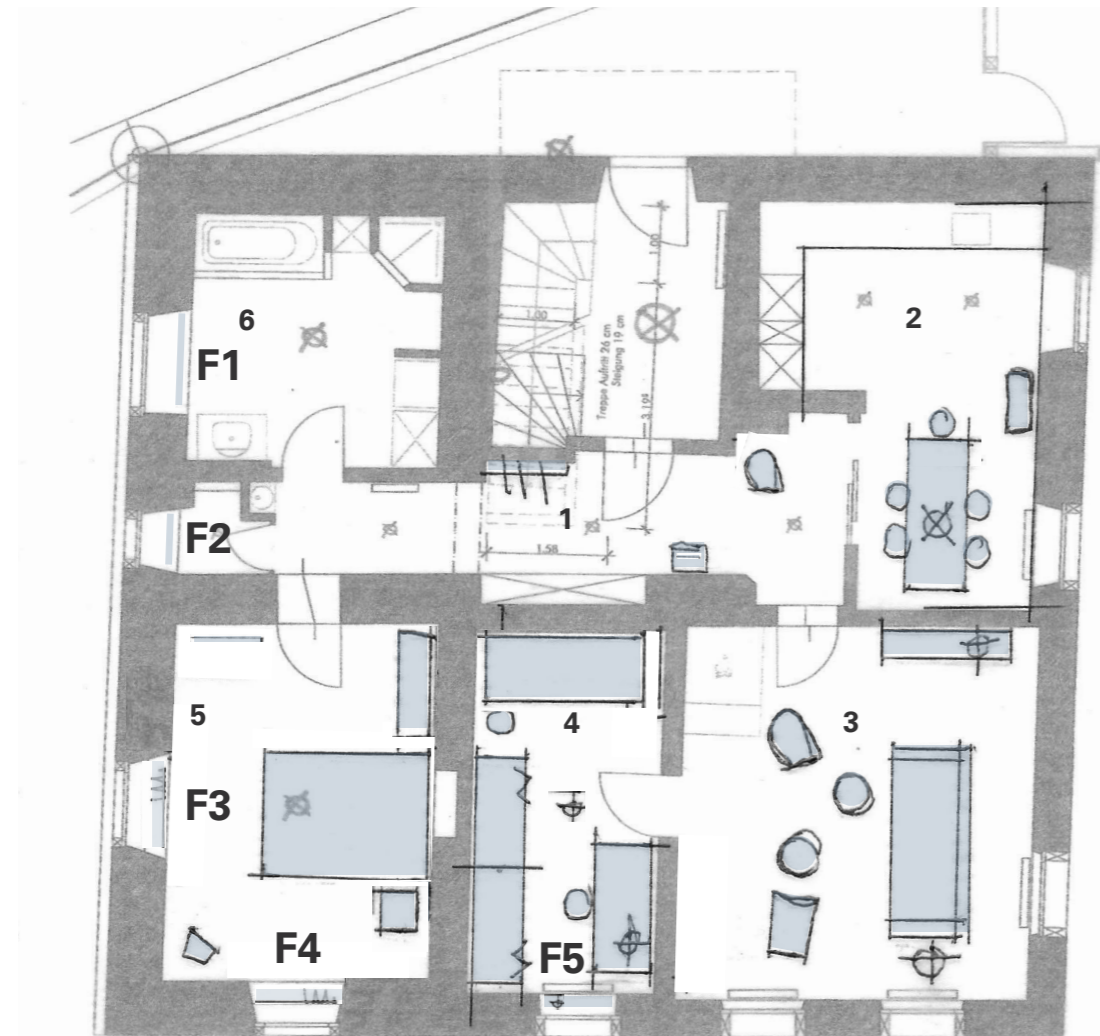




Architektur
Material, Farben, Haptik, Handwerk



Eingang monochrome Farbe
KT. Color 13.095 Himmelgrau
Boden, Wand, Decke, Handlauf



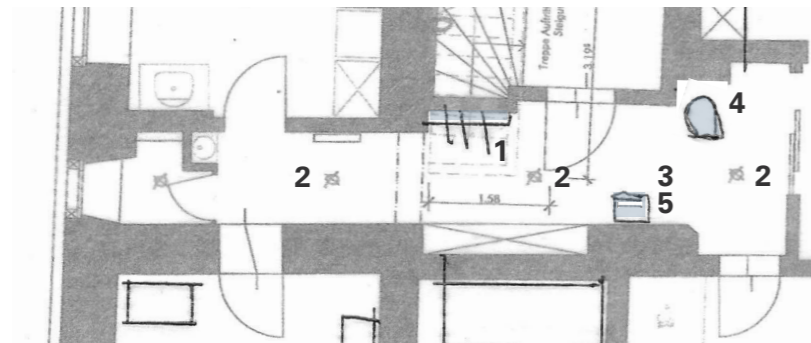
Grundriss EG Mst. 1:100, Format A3

Wohnung EG
3.5 Zimmer
ca. 97 m²
RH 2.23m

- 1 Korridor
- 2 Kochen, Essen
- 3 Wohnen
- 4 Arbeiten, Stauraum, Gäste
- 5 Schlafen
- 6 Bad, WC

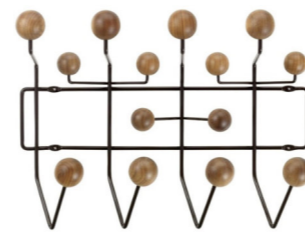
1 Korridor





Grundriss Mst. 1:100, Format A3

1 Korridor



1 bestehend



2



3



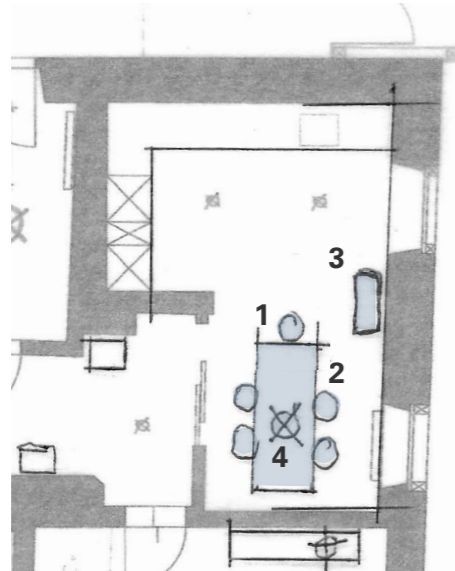
4



5

2 Kochen | Essen





Grundriss Mst. 1:100, Format A3

2 Kochen | Essen



1



2 Lehni Tisch Grösse 205 x 78 cm,
Metall weiss lackiert ,Tischplatte Esche Sperrholz



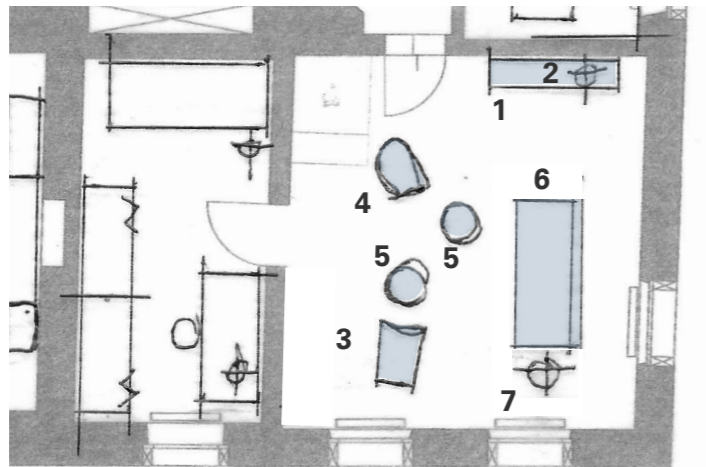
3



4 d 49 cm

3 Wohnen





Grundriss Mst. 1:100, Format A3



1 Grösse 170 x 40 x 85 cm Eiche massiv



3 Wohnen



2



3



4



5

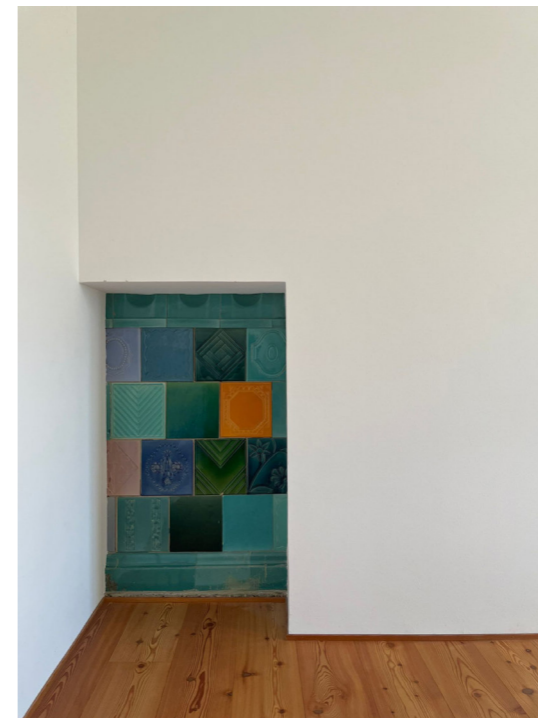


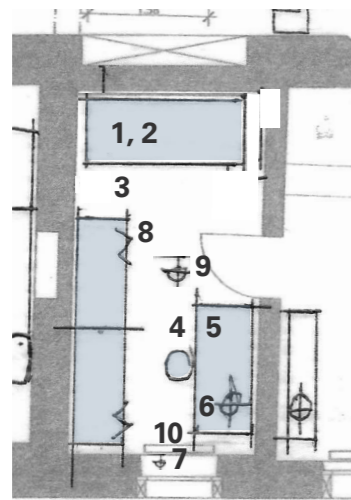
6



7

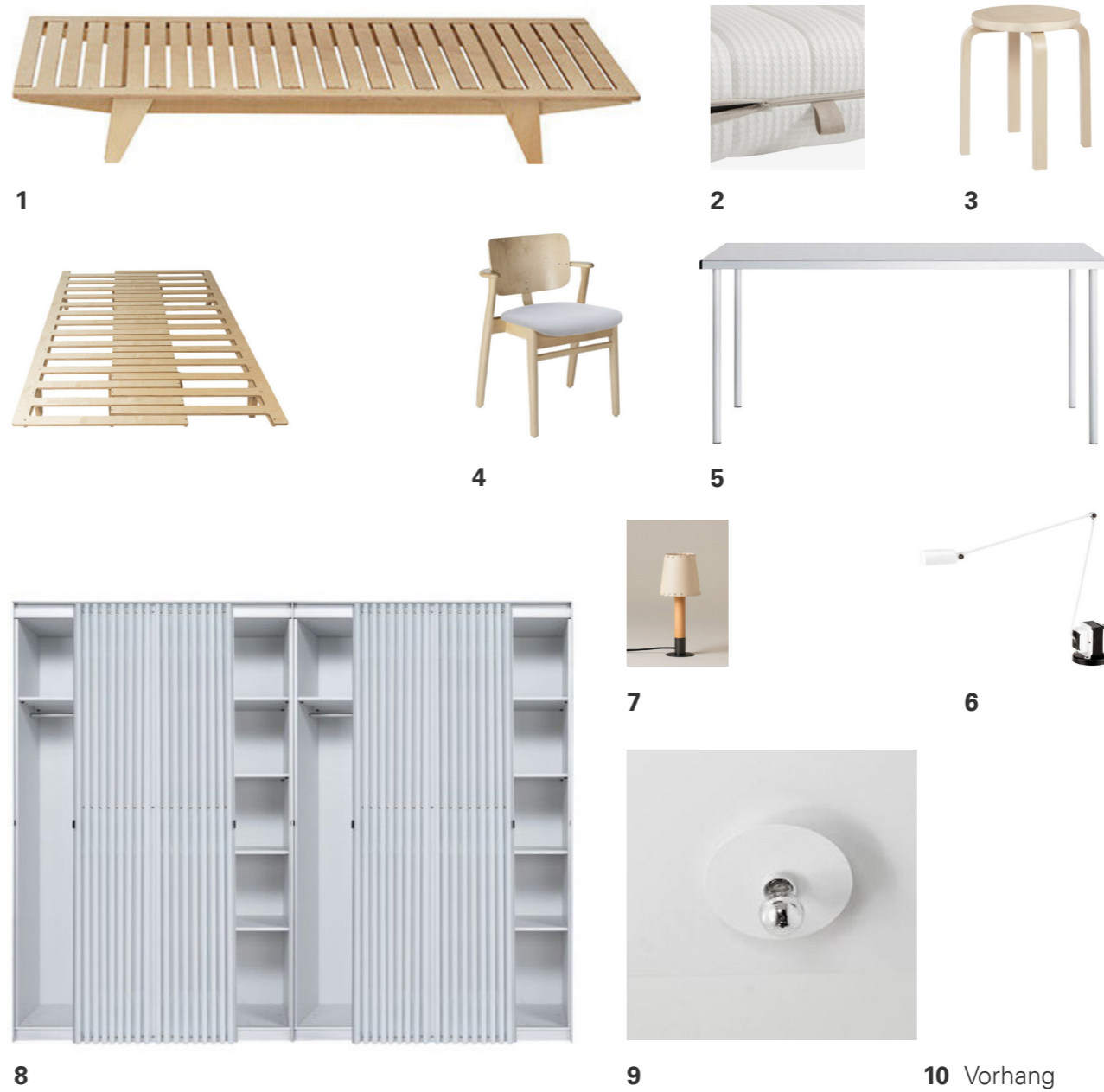
4 Arbeiten | Gäste





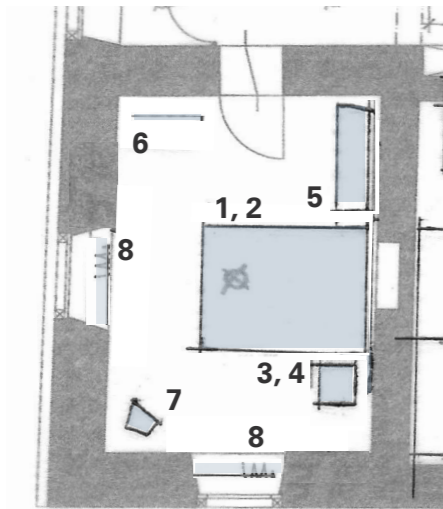
Grundriss Mst. 1:100, Format A3

4 Arbeiten | Gäste



5 Schlafen





Grundriss Mst. 1:100, Format A3

5 Schlafen



1



2



3



5 Grösse 170 x 40 x 85 cm
Eiche massiv



6 Grösse 103 x 48 x 162 cm



7



4

8 Vorhang