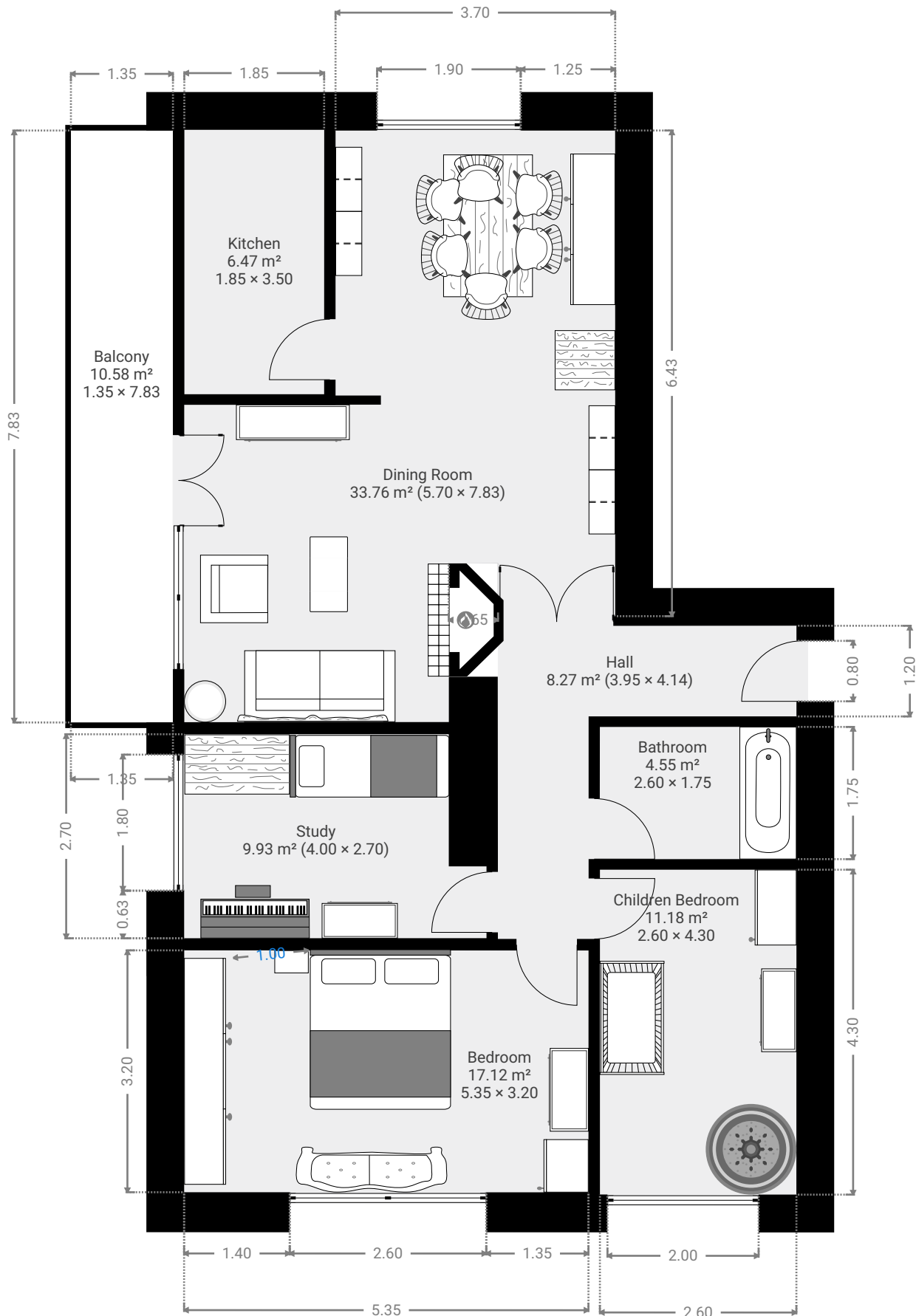


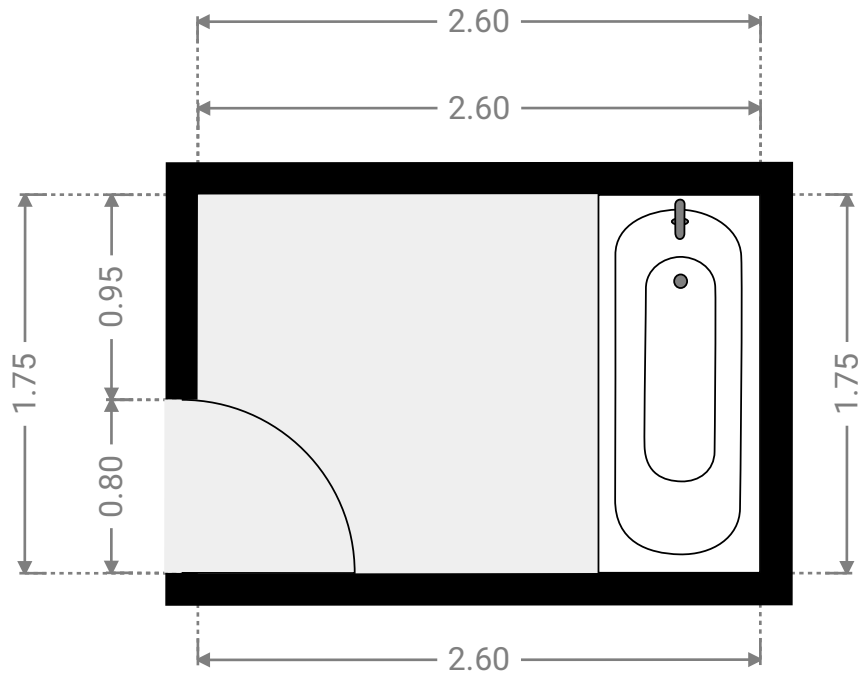
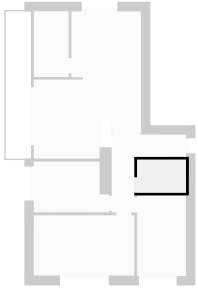
▼ Ground Floor

TOTAL AREA: 129.19 m² • LIVING AREA: 121.35 m² • ROOMS: 7



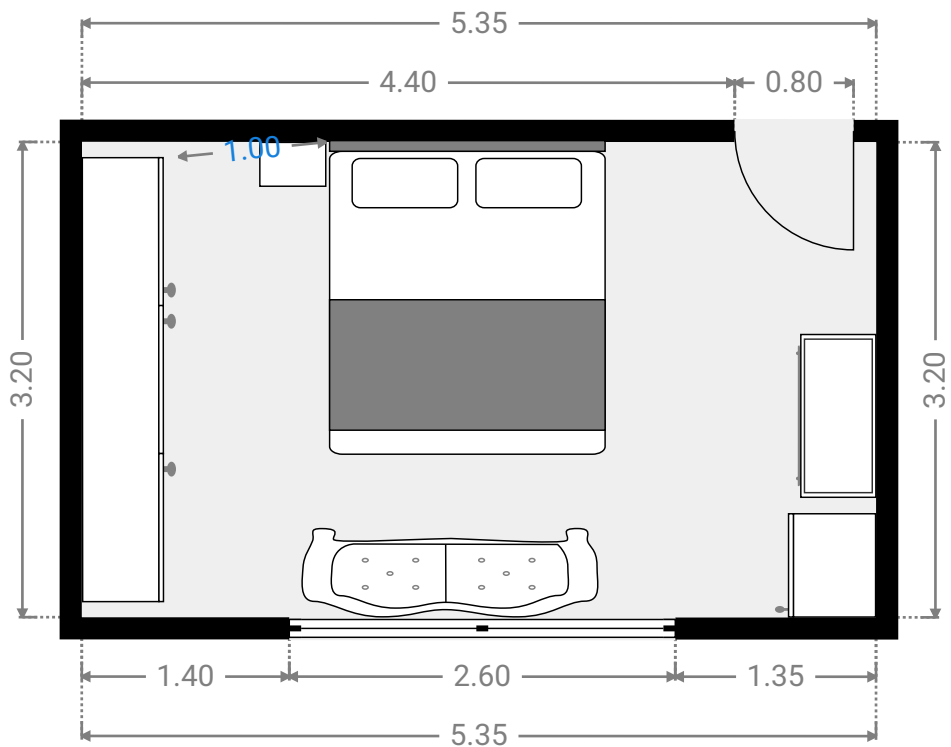
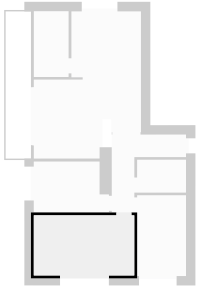
▼ Bathroom
Ground Floor

WIDTH: 2.60 m • LENGTH: 1.75 m • CEILING HEIGHT: 2.50 m
AREA: 4.55 m² • PERIMETER: 8.70 m



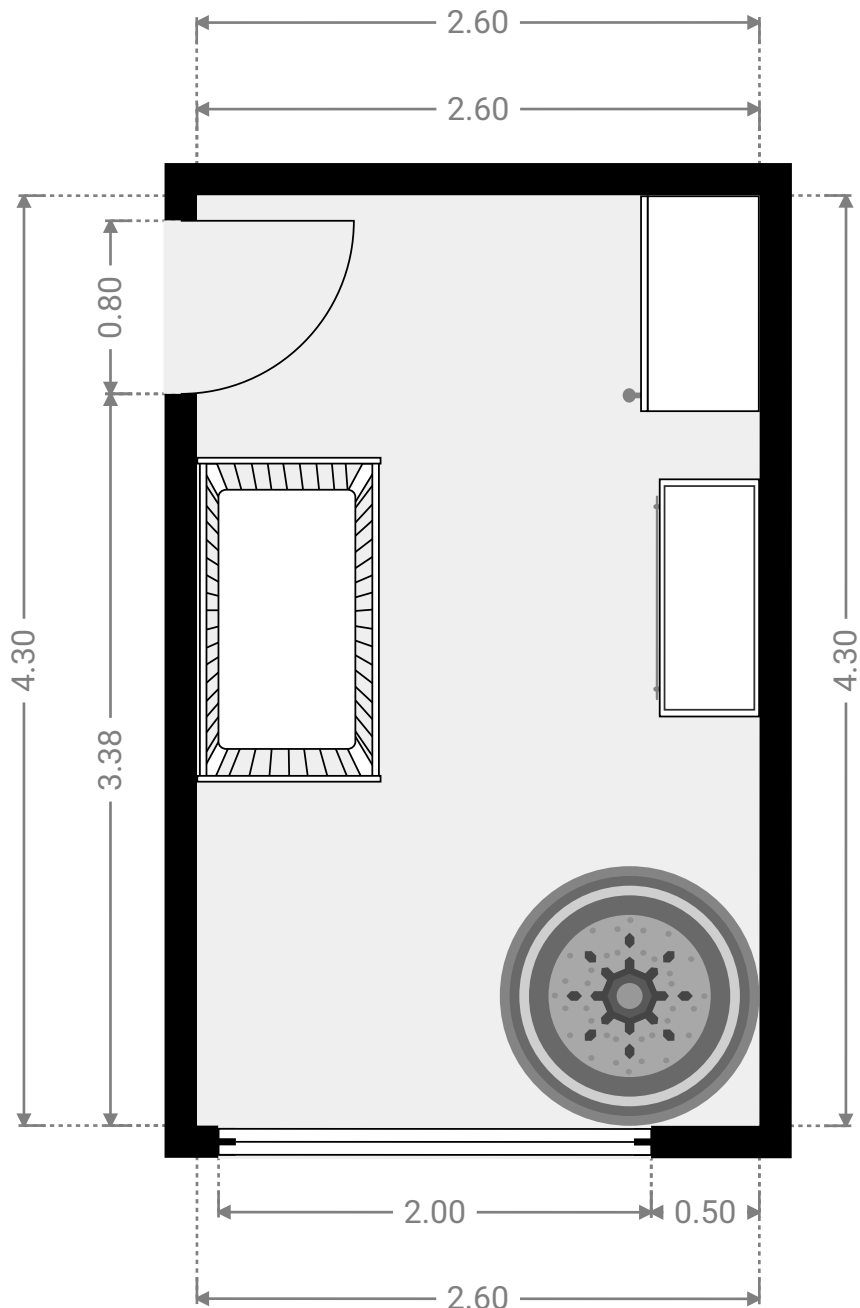
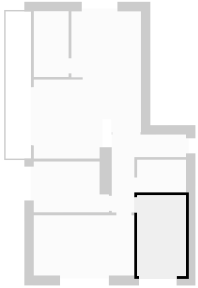
▼ **Bedroom**
Ground Floor

WIDTH: 5.35 m • LENGTH: 3.20 m • CEILING HEIGHT: 2.50 m
AREA: 17.12 m² • PERIMETER: 17.10 m



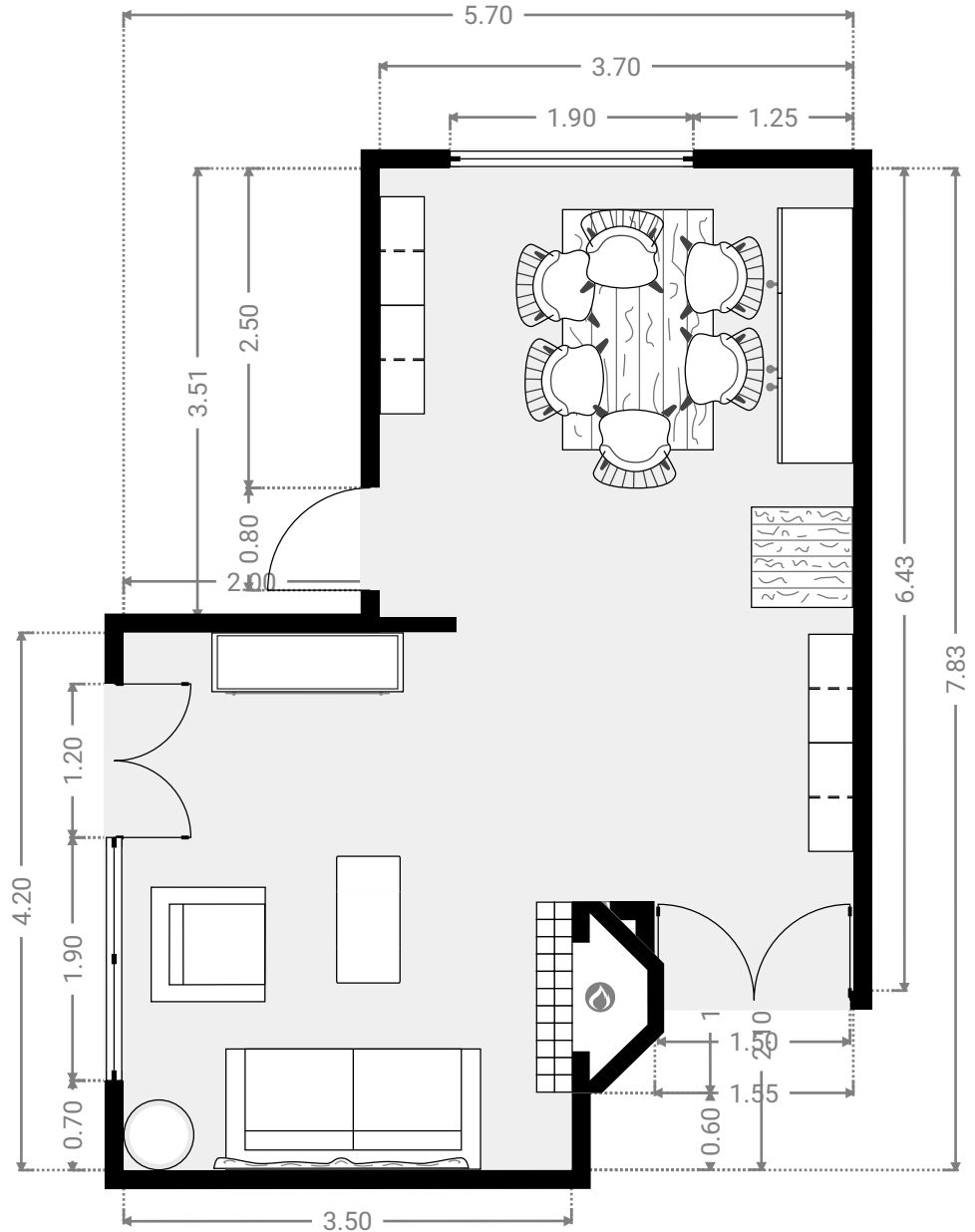
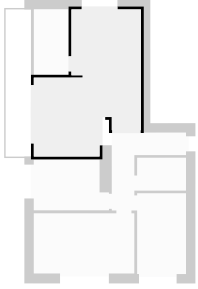
▼ **Children Bedroom**
Ground Floor

WIDTH: 2.60 m • LENGTH: 4.30 m • CEILING HEIGHT: 2.50 m
AREA: 11.18 m² • PERIMETER: 13.80 m



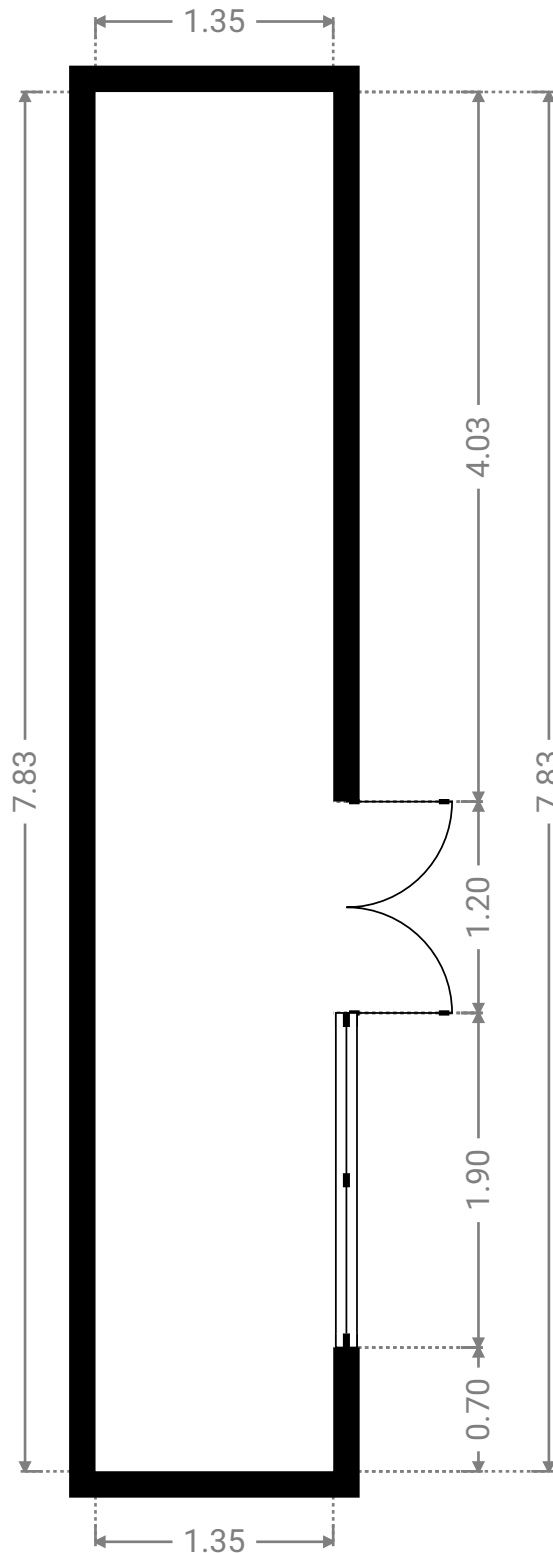
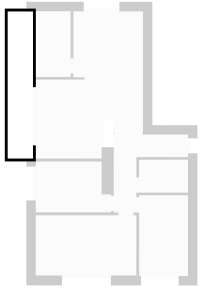
▼ Dining Room
Ground Floor

WIDTH: 5.70 m • LENGTH: 7.83 m • CEILING HEIGHT: 2.50 m
AREA: 33.76 m² • PERIMETER: 29.66 m



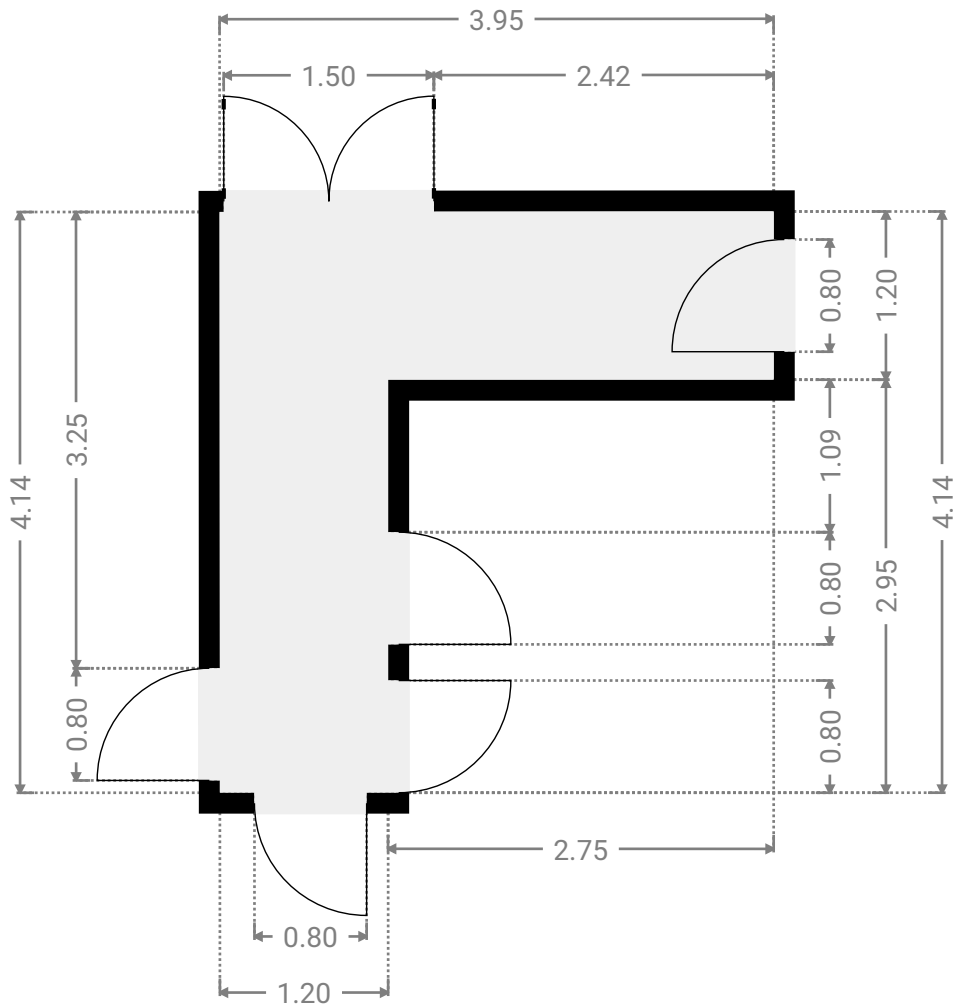
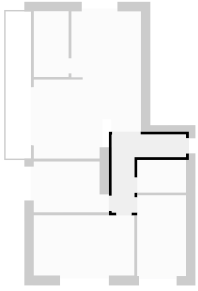
▼ Balcony Ground Floor

WIDTH: 1.35 m • LENGTH: 7.83 m • CEILING HEIGHT: 2.50 m
AREA: 10.58 m² • PERIMETER: 18.37 m



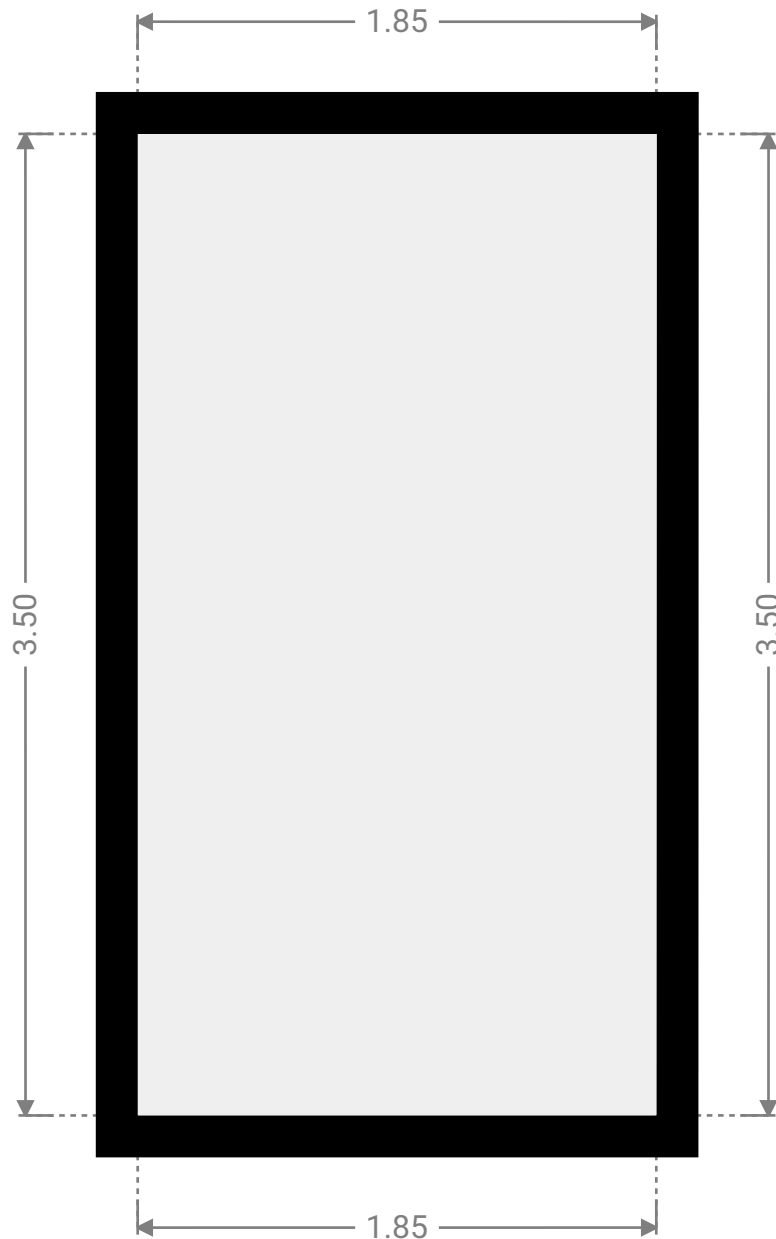
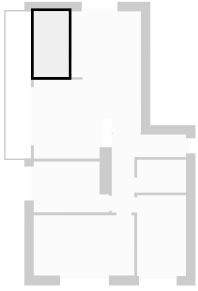
▼ Hall Ground Floor

WIDTH: 3.95 m • LENGTH: 4.14 m • CEILING HEIGHT: 2.50 m
AREA: 8.27 m² • PERIMETER: 16.19 m



▼ **Kitchen**
Ground Floor

WIDTH: 1.85 m • LENGTH: 3.50 m • CEILING HEIGHT: 2.50 m
AREA: 6.47 m² • PERIMETER: 10.70 m



▼ Study Ground Floor

WIDTH: 4.00 m • LENGTH: 2.70 m • CEILING HEIGHT: 2.50 m
AREA: 9.93 m² • PERIMETER: 13.40 m

