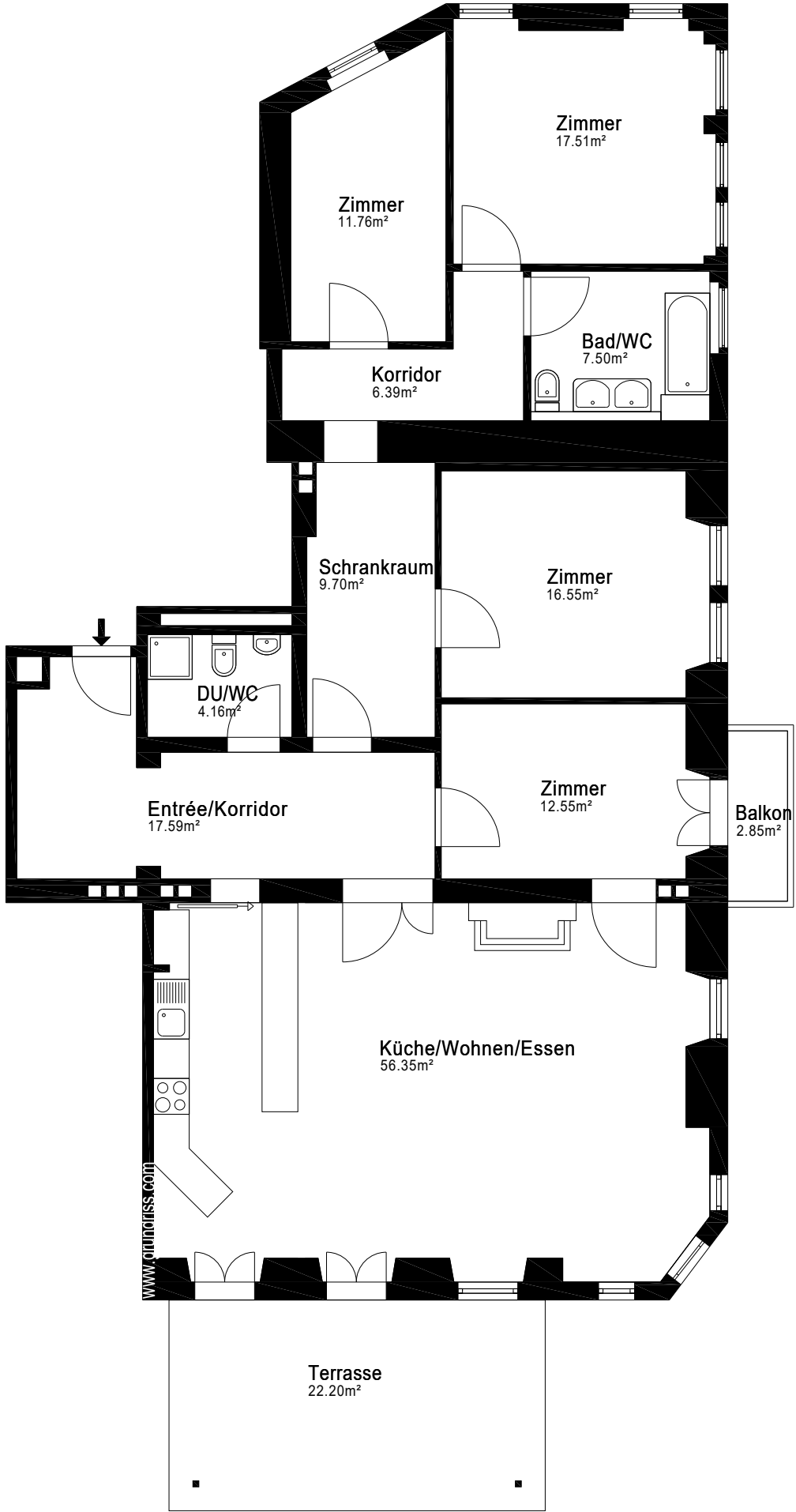


18 2.01 18 1.88 52 2.60 12 4.20 40 1.00 10

18 1.20 45
3.83
12
1.20 12
70
2.41
47
1.72
237
40
5.95
70



45
3.91
12
2.50
84
3.80
10
2.93
40
6.35
30

18 2.11 18 2.42 7.08 30 1.00 10