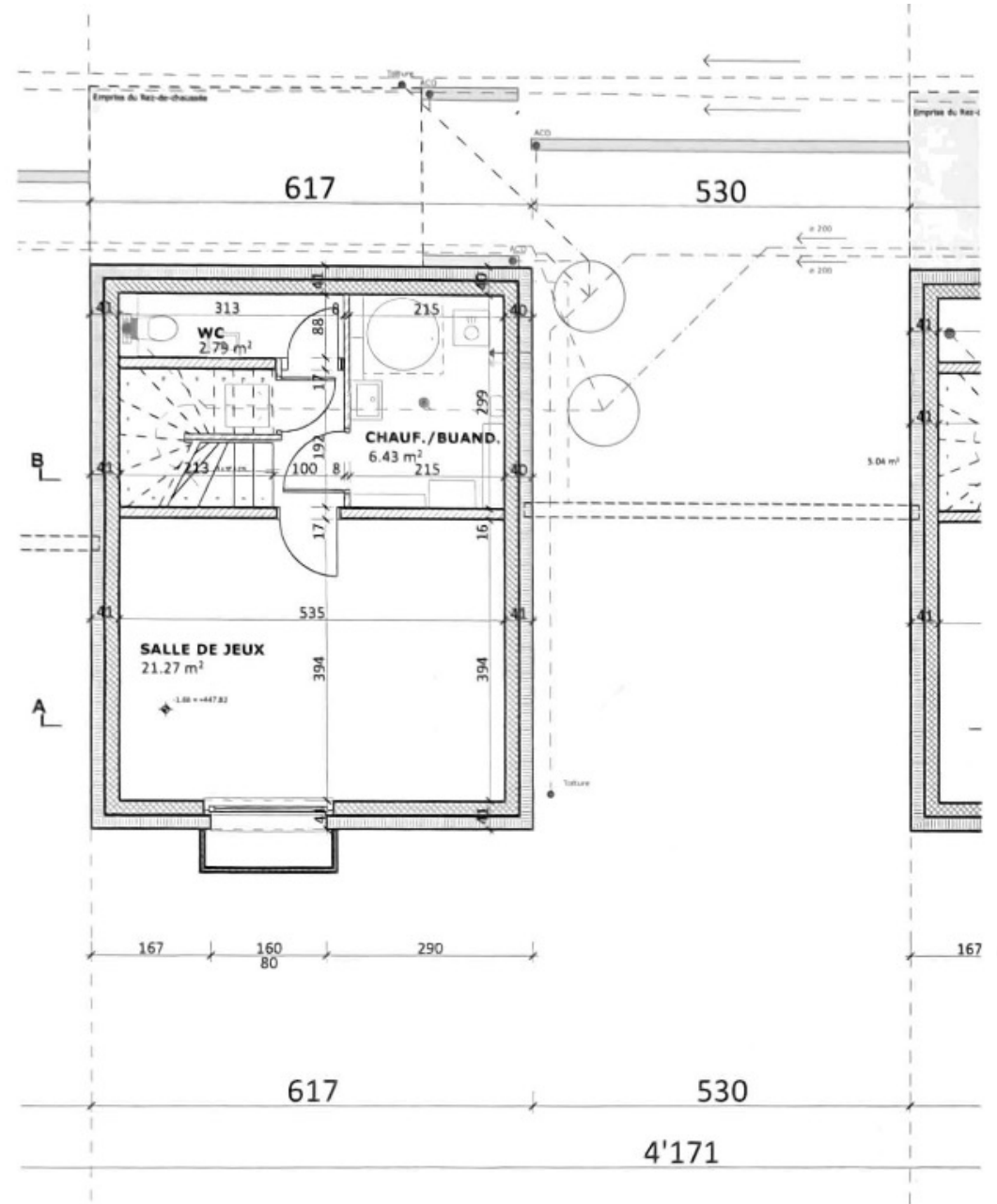


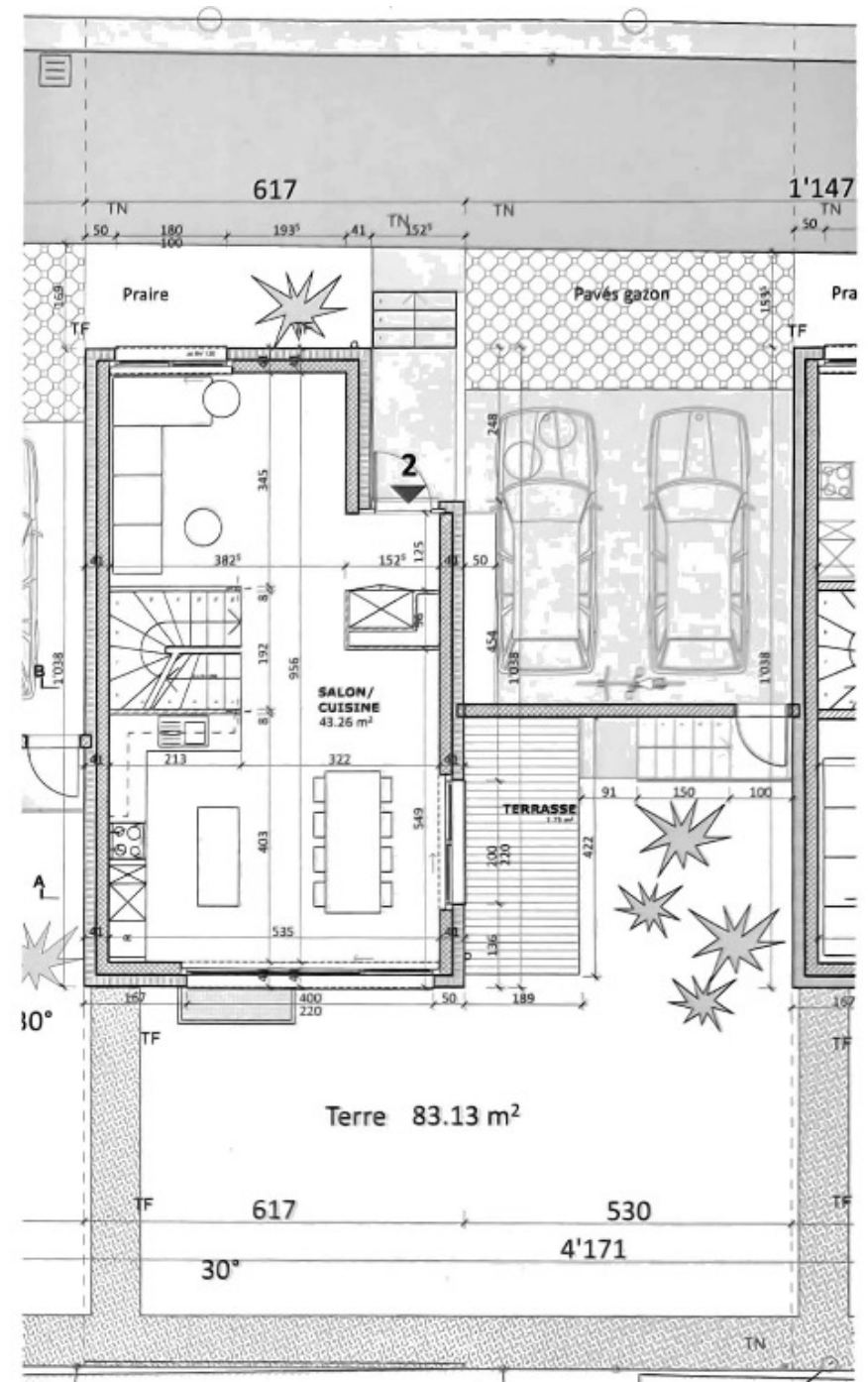
Plan du sous-sol

- Chaufferie/Buanderie : 6.43 m²
- WC : 2.79 m²
- Salle de jeux : 21.27 m²



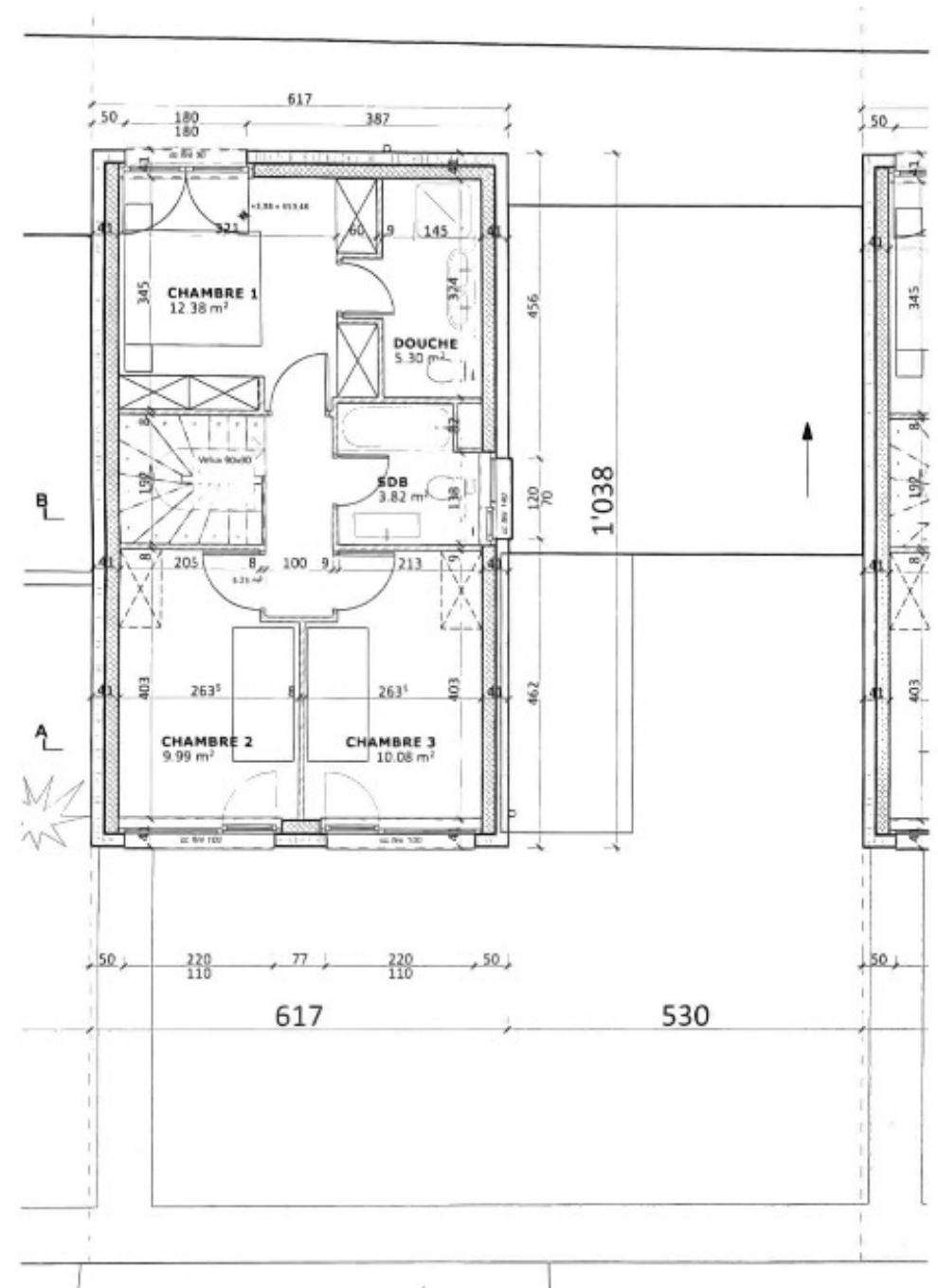
Plan du rez-de-chaussée

- Hall : 1.9 m²
- Espace salon : 13.2 m²
- Salle à manger : 18.2 m²
- Cuisine : 8.6 m²
- 2 places de parc couvertes
- Terrasse couverte : 7.73 m²
- Jardin côté cuisine : 83.13 m²
- Jardinnet côté salon : 7.71 m²



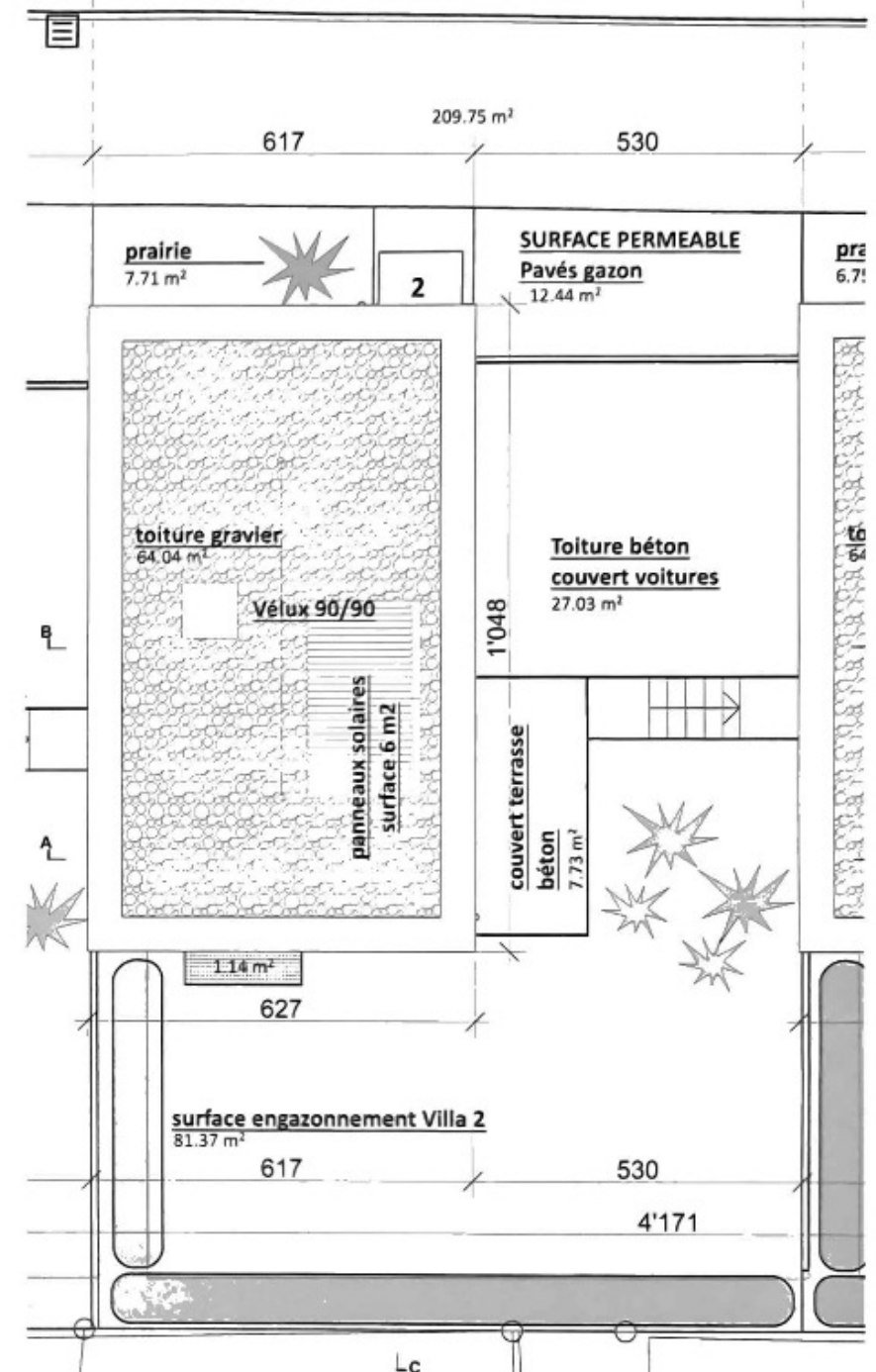
Plan du 1^{er} étage

- Chambre parentale : 12.38 m²
- Salle de douche parentale : 5.30 m²
- Chambre 2 : 9.99 m²
- Chambre 3 : 10.08 m²
- Salle de bain : 3.82 m²

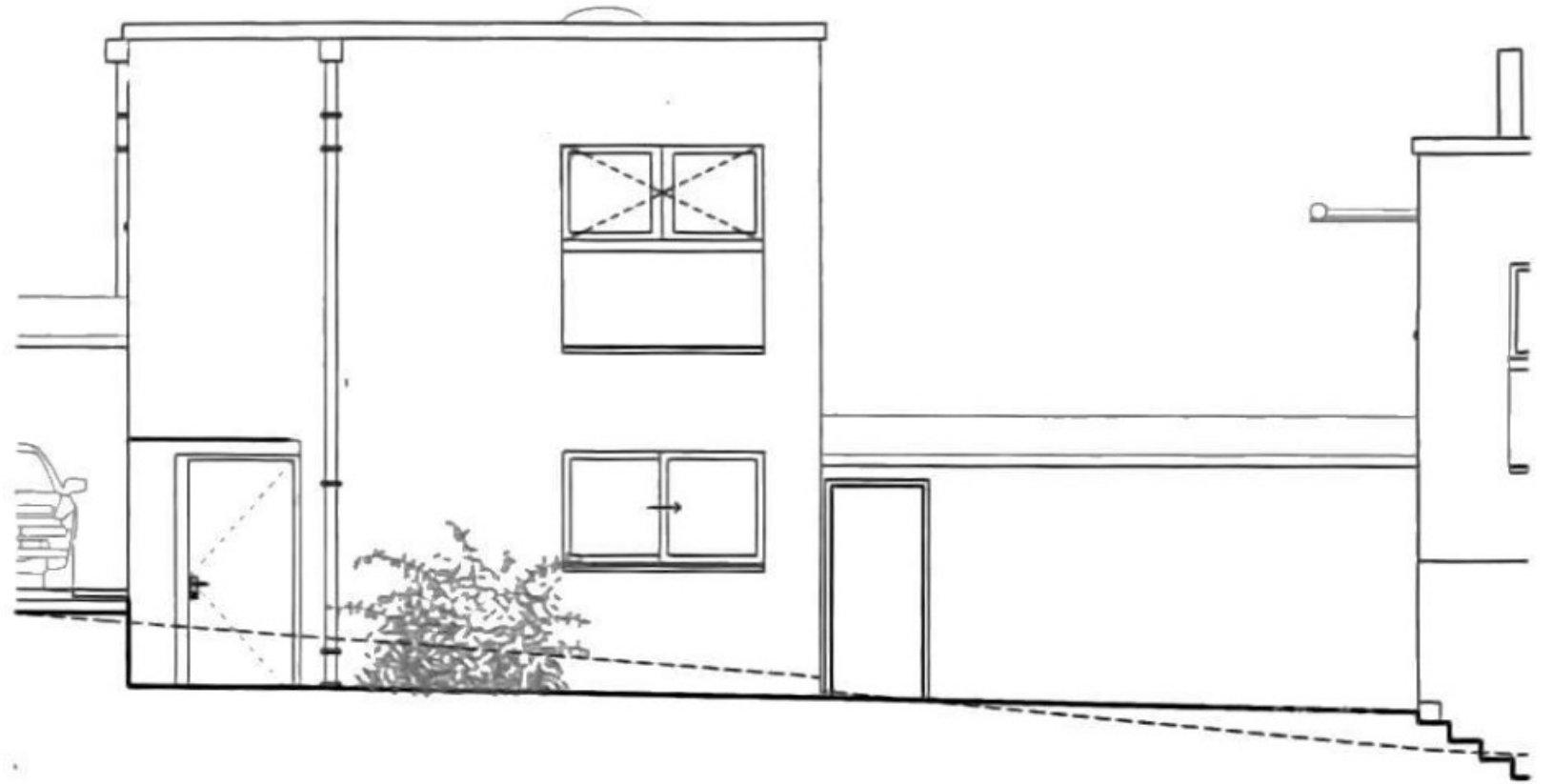


Plan de la toiture

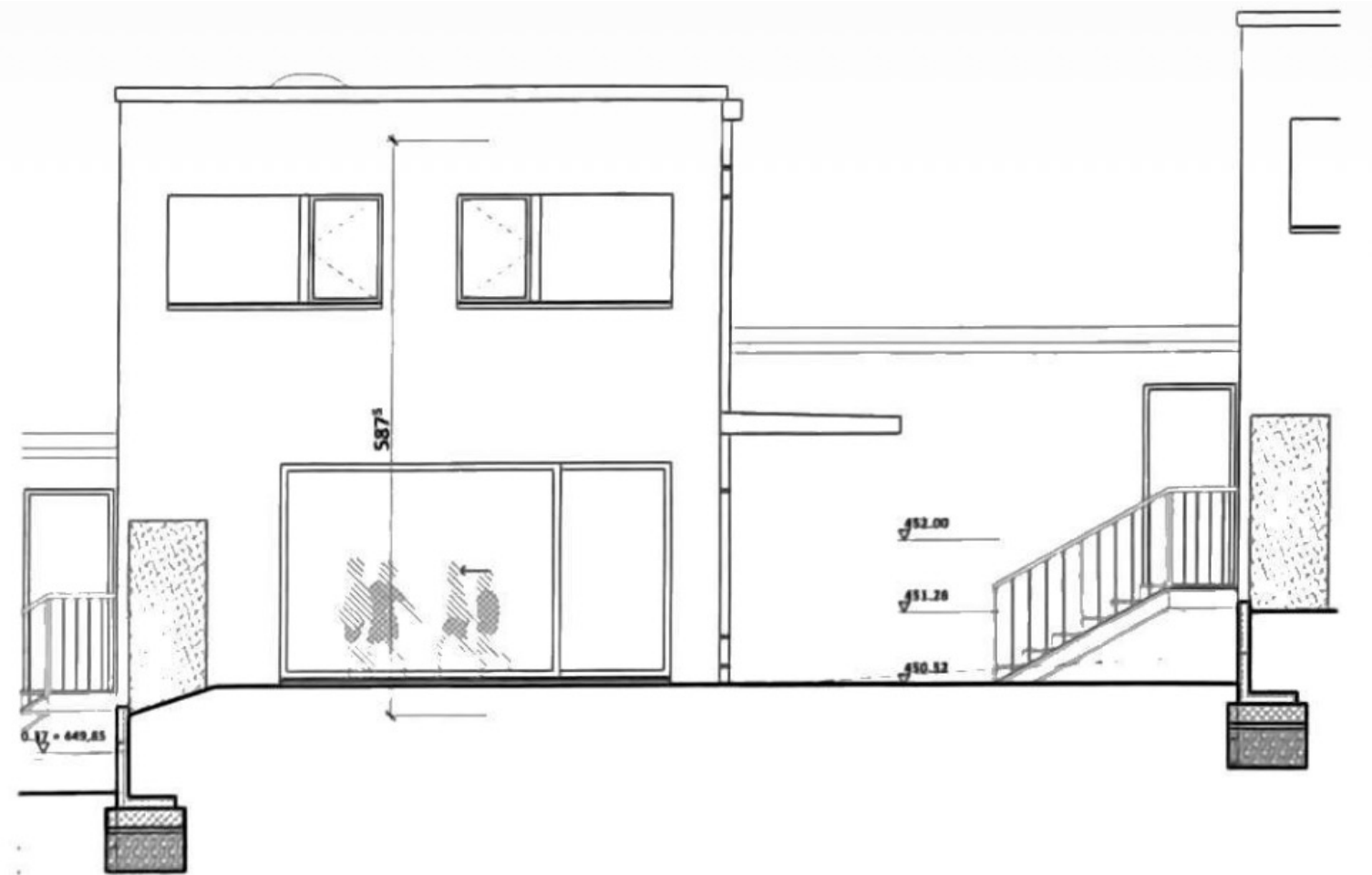
- Toiture en gravier
- Velux au-dessus de la cage d'escaliers
- Panneaux solaires (6 m²)



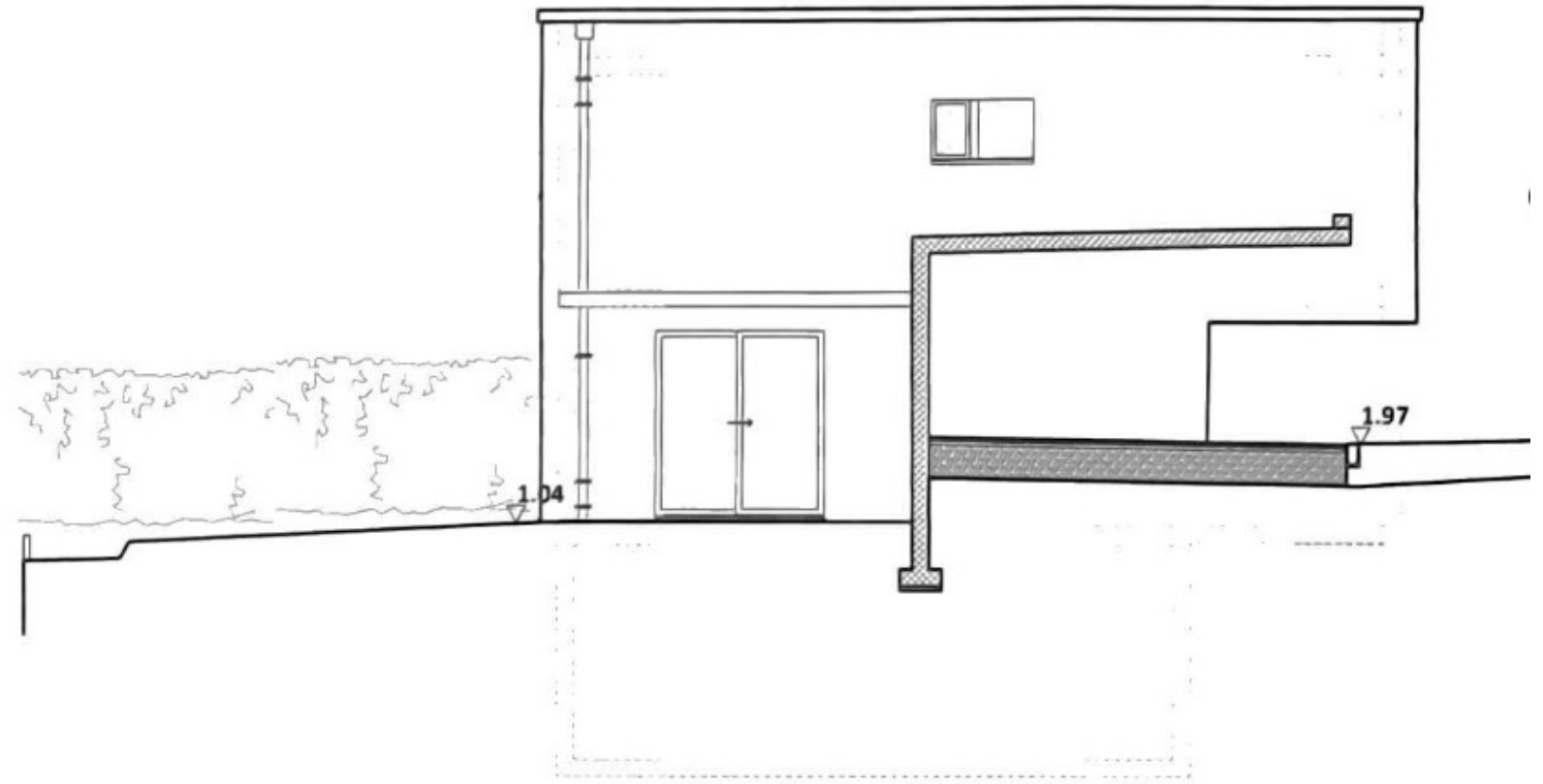
Elévation
Nord-Est



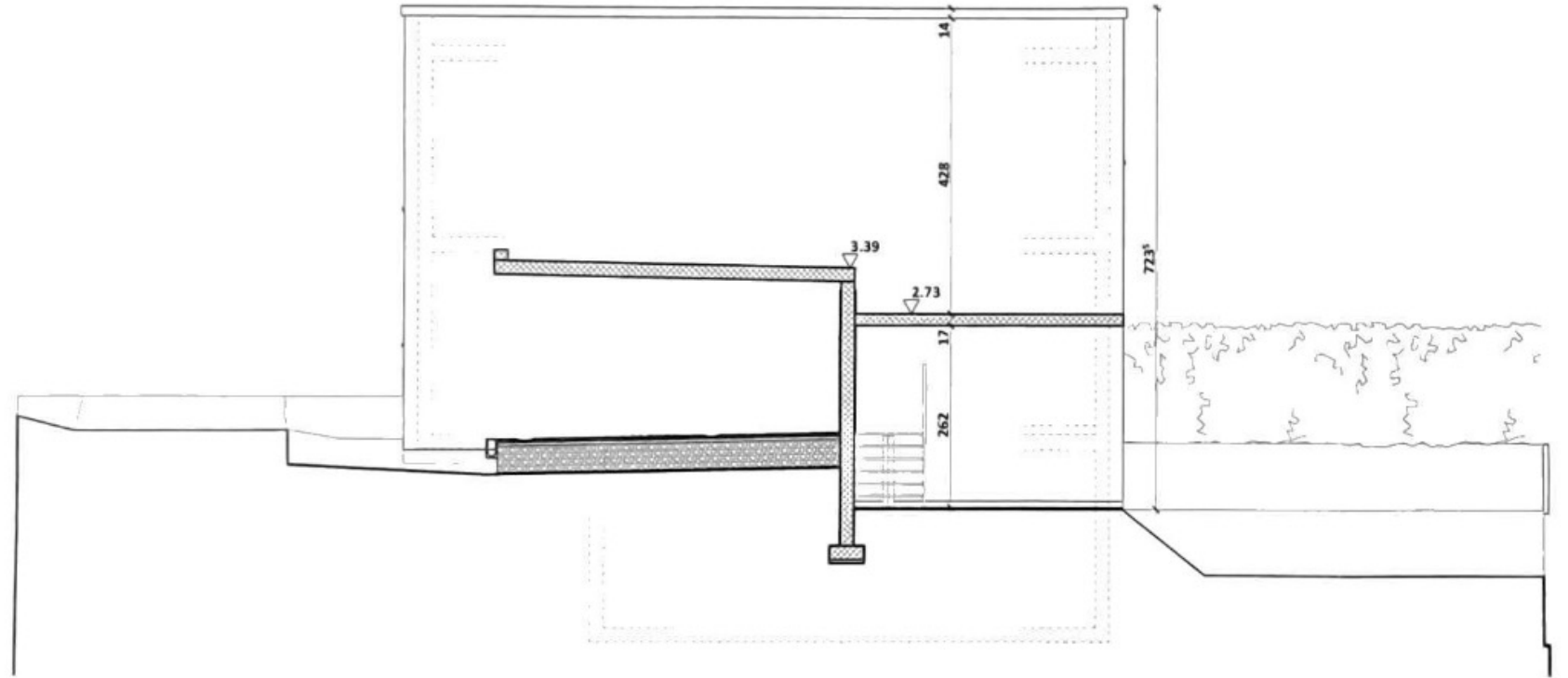
Elévation
Sud-Ouest



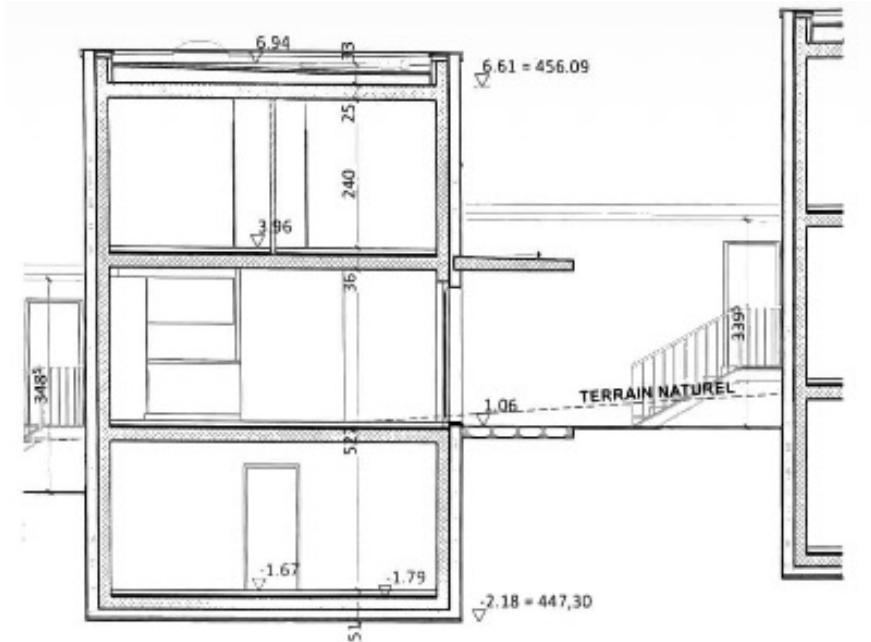
Elévation
Sud-Est



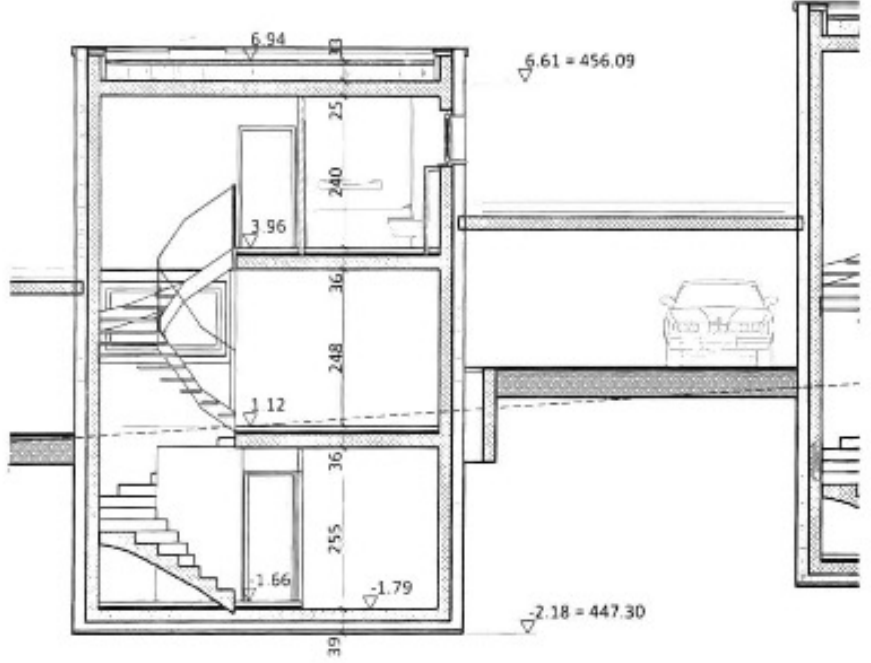
Elévation
Nord-Ouest



Coupes A-A et B-B



Coupe A-A



Coupe B-B

Coupe C-C

