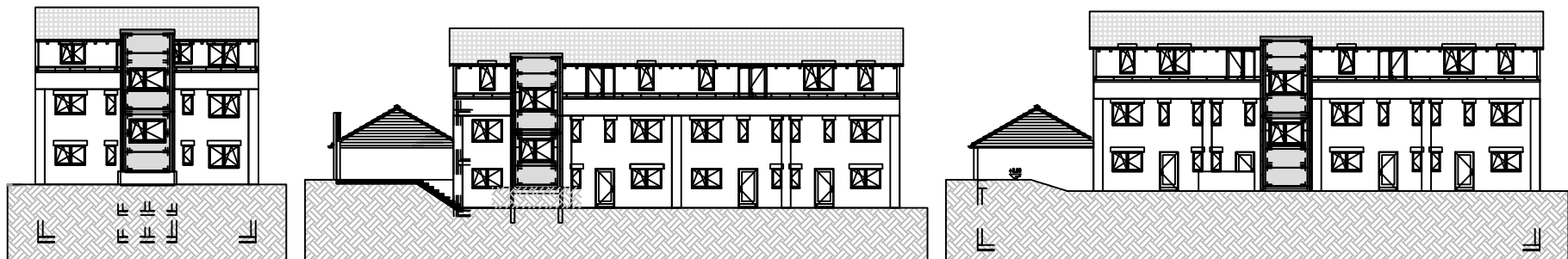
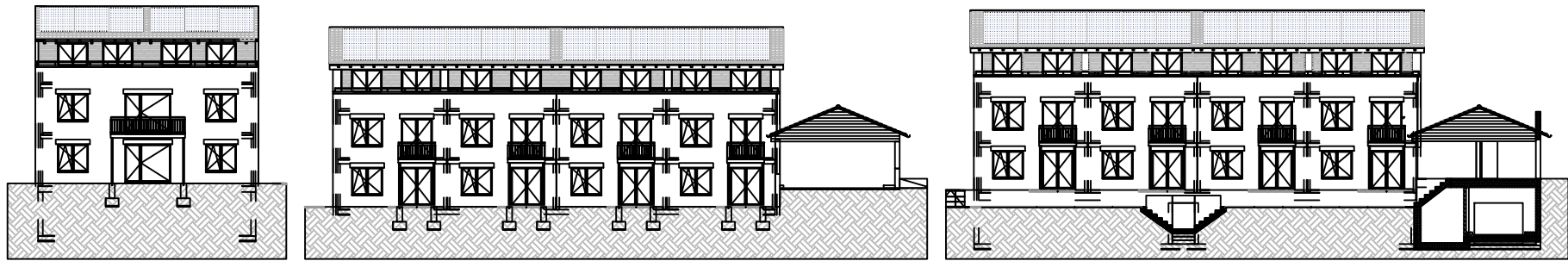


3 Mehrfamilienhäuser DORFSTRASSE 119, 121, 123 EMBRACH



Lasaro AG

Haus 3

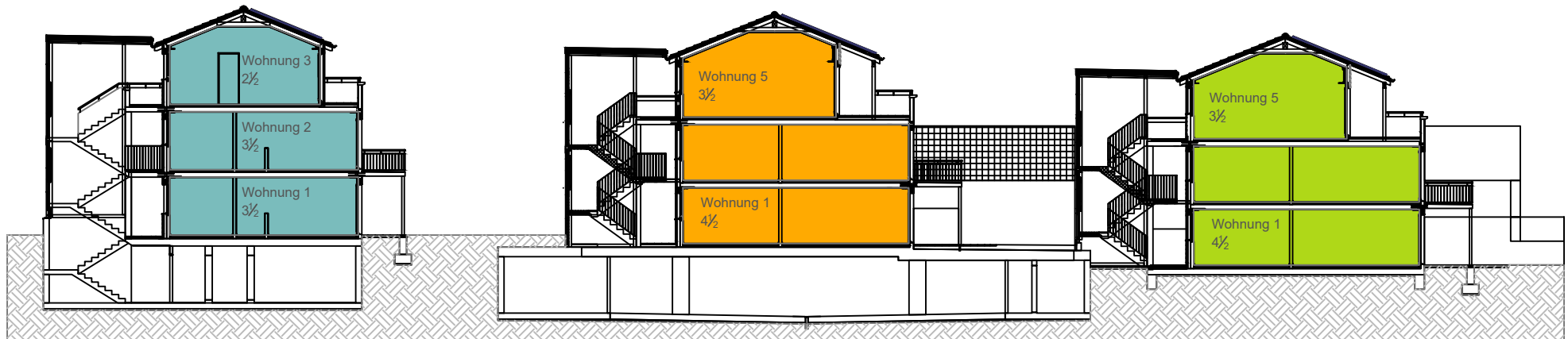
Vermietung

Haus 2

Vermietung

Haus 1

Vermietung



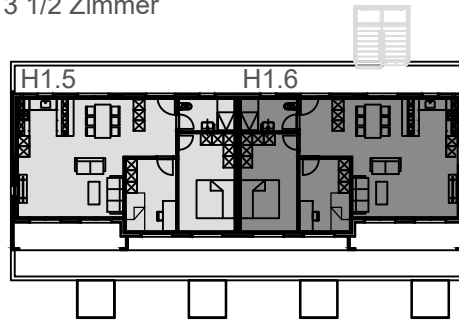
3 Wohnungen -

6 Wohnungen -

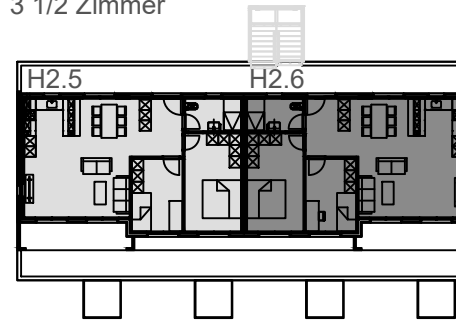
6 Wohnungen -

Attikageschoss

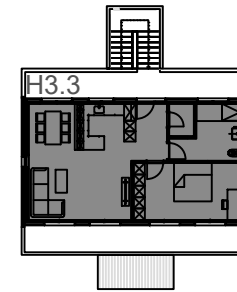
Haus 1
3 1/2 Zimmer



Haus 2
3 1/2 Zimmer

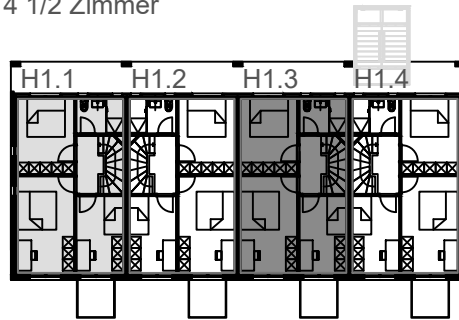


Haus 3
2 1/2 Zimmer

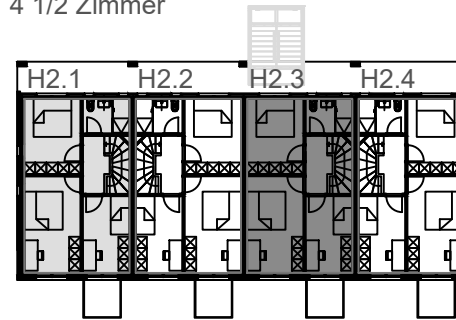


Obergeschoss

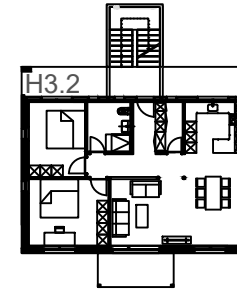
Haus 1
4 1/2 Zimmer



Haus 2
4 1/2 Zimmer

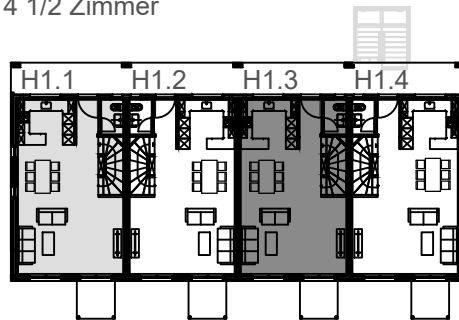


Haus 3
3 1/2 Zimmer

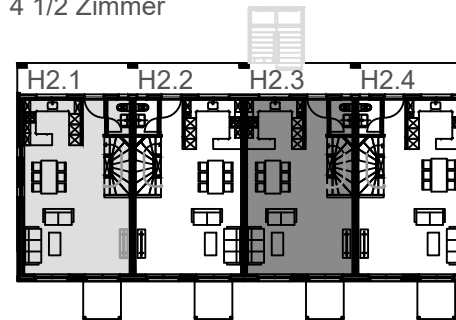


Erdgeschoss

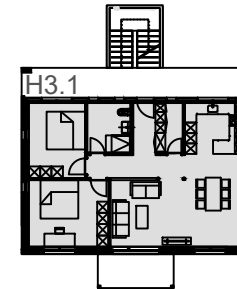
Haus 1
4 1/2 Zimmer

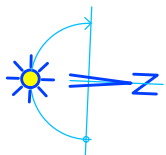
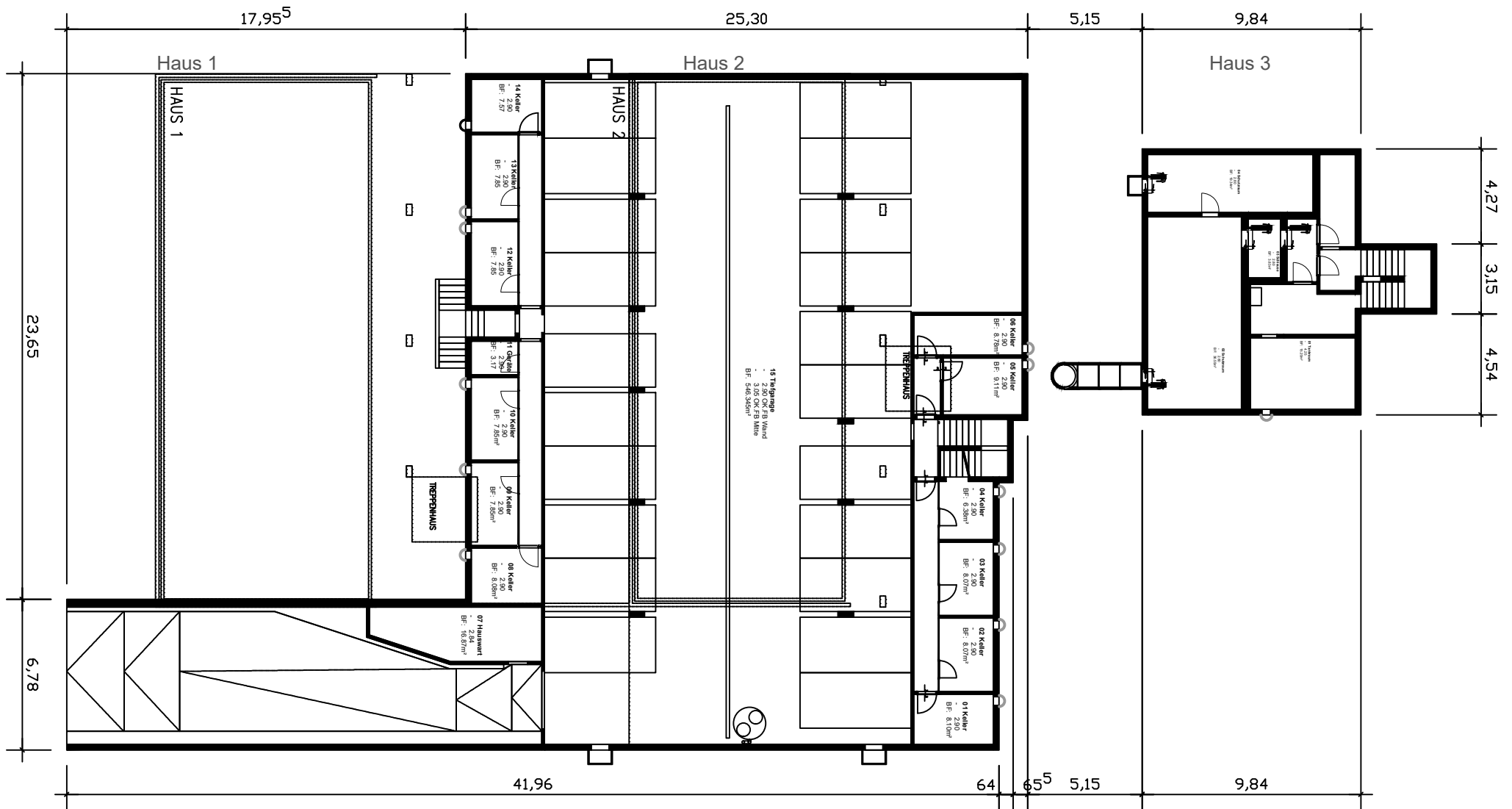


Haus 2
4 1/2 Zimmer

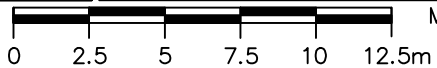


Haus 3
3 1/2 Zimmer





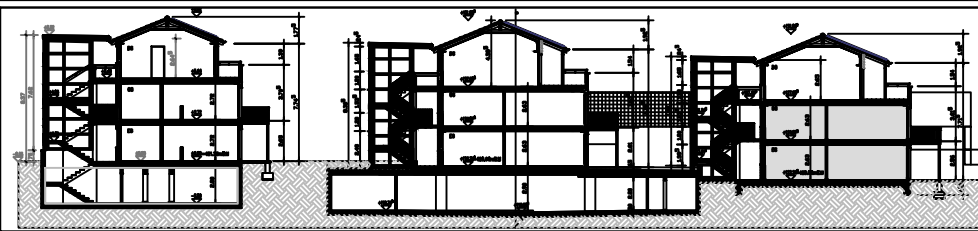
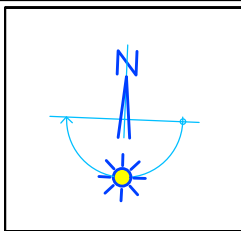
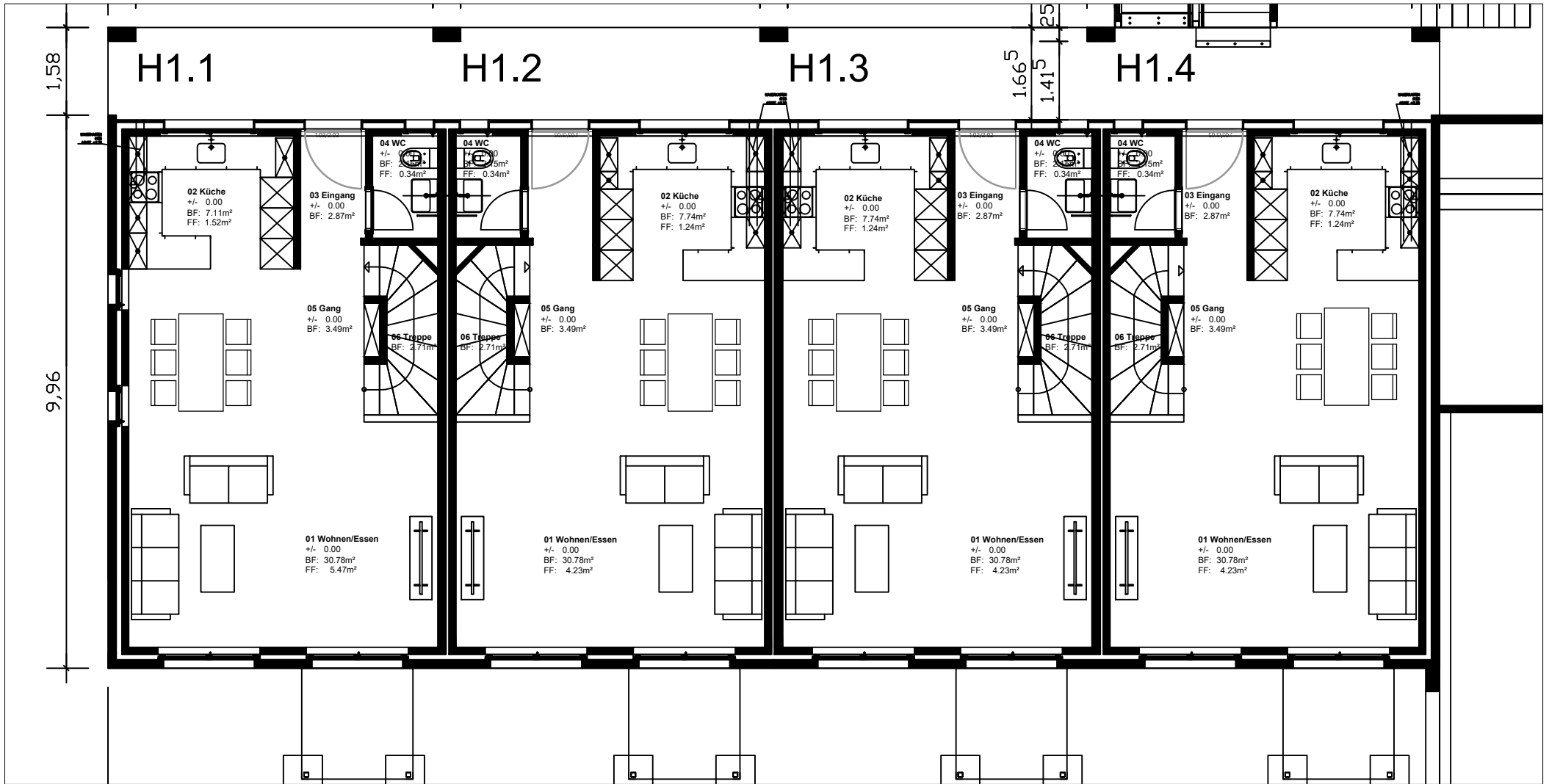
M 1:250



Geschoss:

Untergeschoss

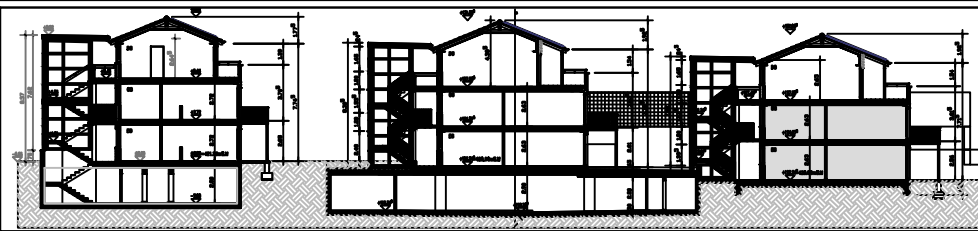
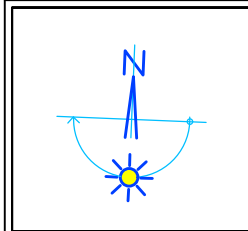
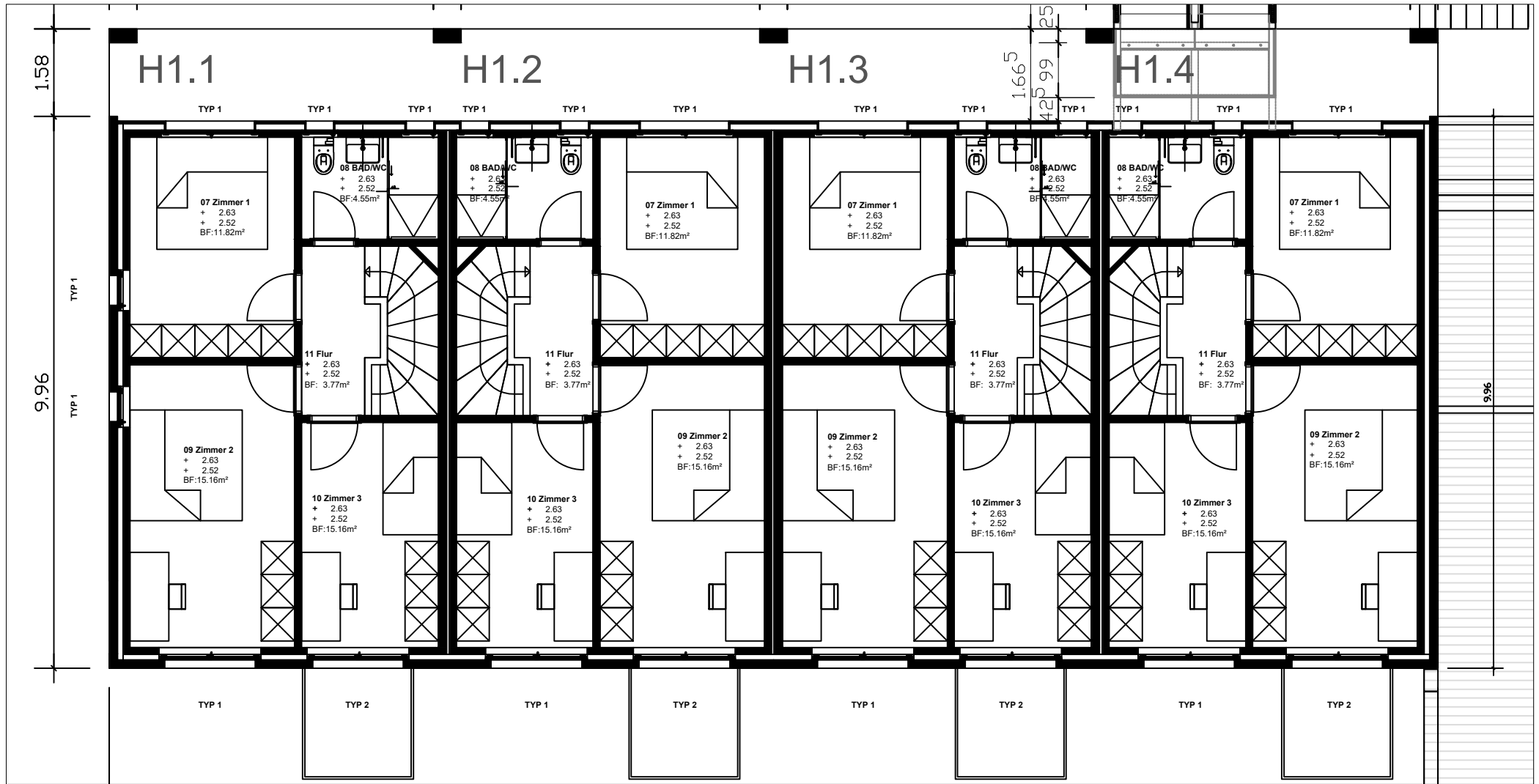
Haus 2, 3 Untergeschoss 1:250



Wohnungs-Nr: H1.1–H1.4
 Geschoss: EG

4 1/2 Zimmer– Maisonette Wohnung
 Nettowohnfläche: 51,25m²(H1.1)+51,25m²(H1.2)+51,25m²(H1.3)+51,25m²(H1.4)=205m²
 inkl. Zwischenwände / ohne Aussenwände Wohnungstrennwände



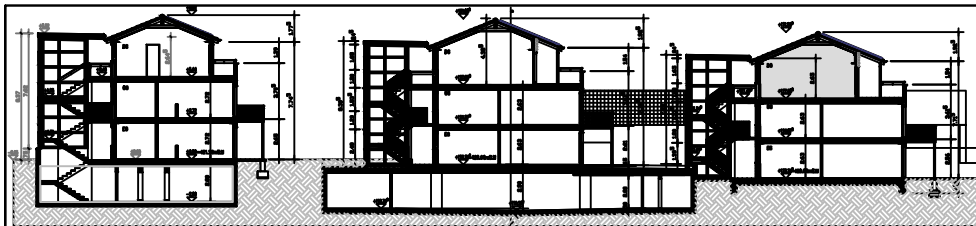
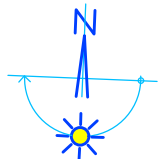
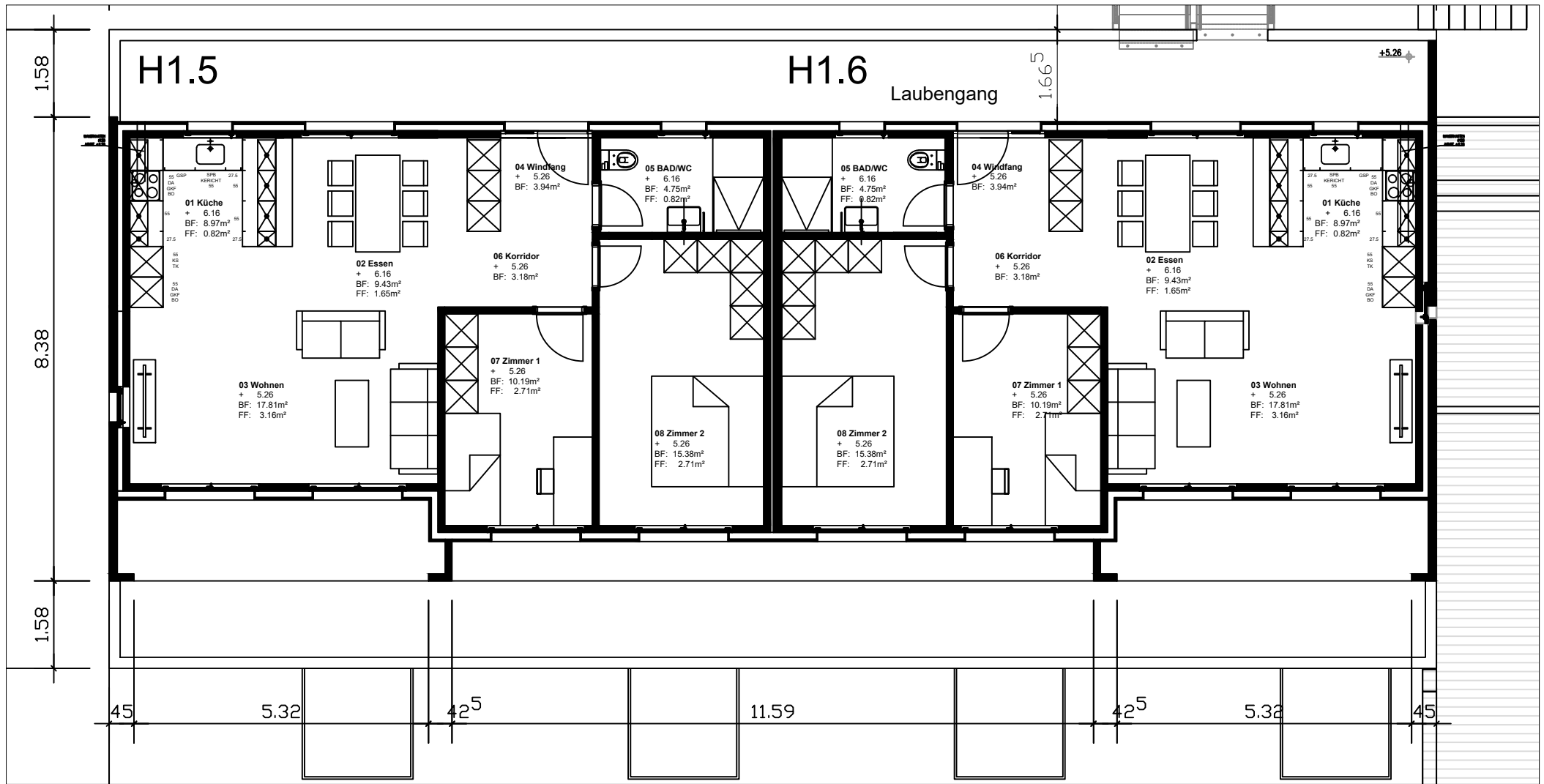


Wohnungs-Nr: H1.1–H1.4
 Geschoss: OG

4 1/2 Zimmer- Maisonette Wohnung
 Nettowohnfläche: $51.25\text{m}^2(\text{H1.1}) + 51.25\text{m}^2(\text{H1.2}) + 51.25\text{m}^2(\text{H1.3}) + 51.25\text{m}^2(\text{H1.4}) = 205\text{m}^2$
 inkl. Zwischenwände / ohne Aussenwände und Wohnungstrennwände



Haus 1 Obergeschoss 1:100



M 1:100

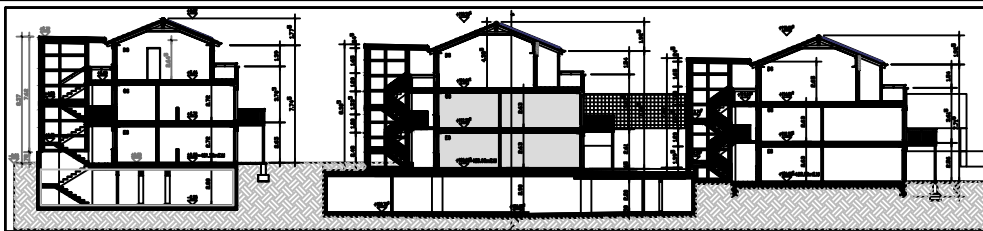
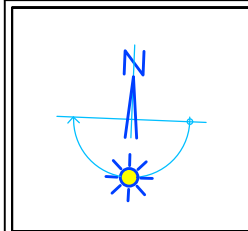
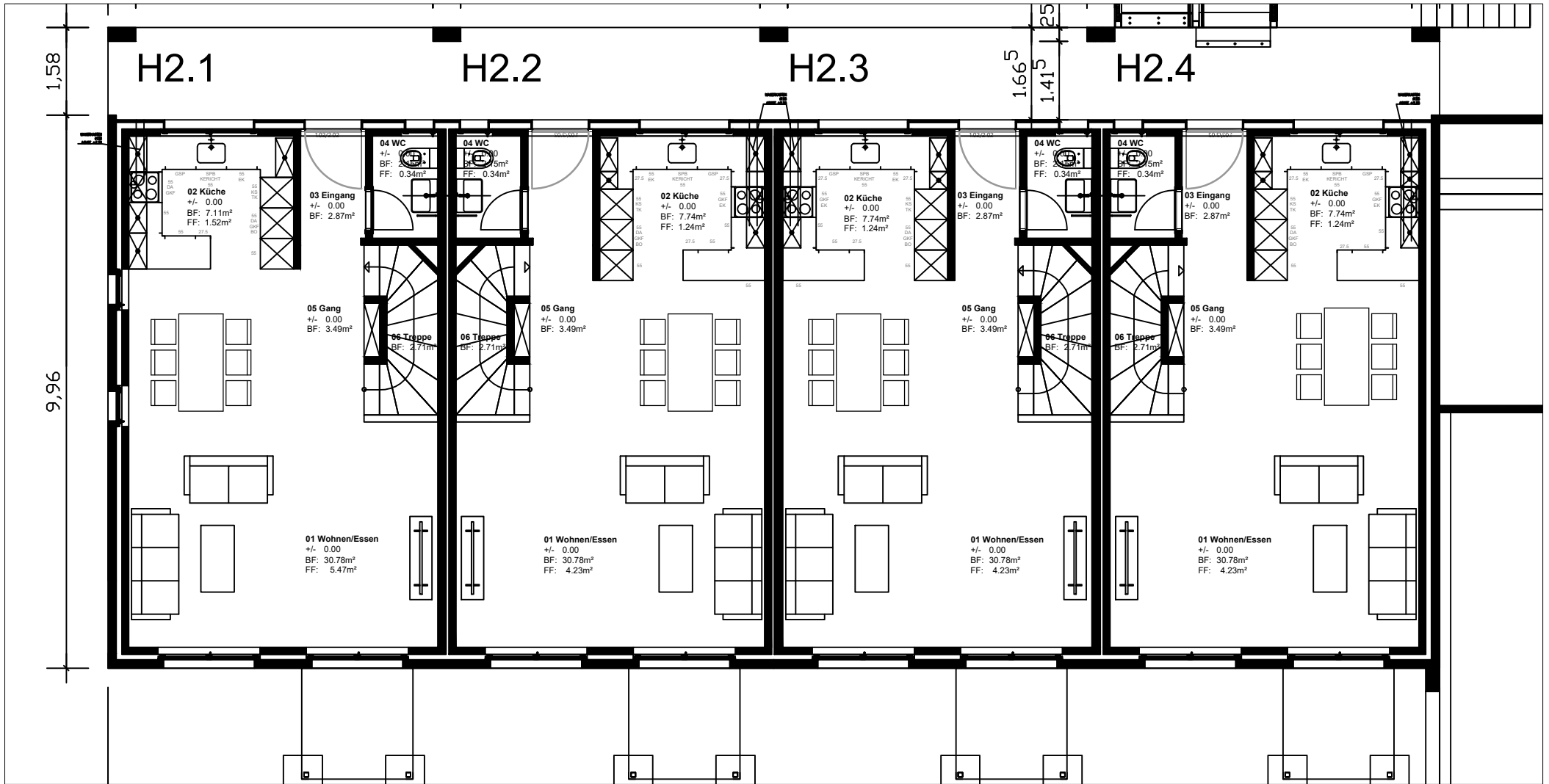
0 1 2 3 4 5m

Wohnungs-Nr:
Geschoss:

H1.5-H1.6
DG

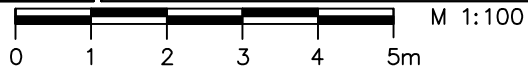
3 1/2 Zimmer- Attika Wohnung
Nettowofläche: 75.94m²(H1.5)+75.94m²(H1.6)=151.88m²
inkl. Zwischenwände / ohne Aussenwände und Wohnungstrennwände

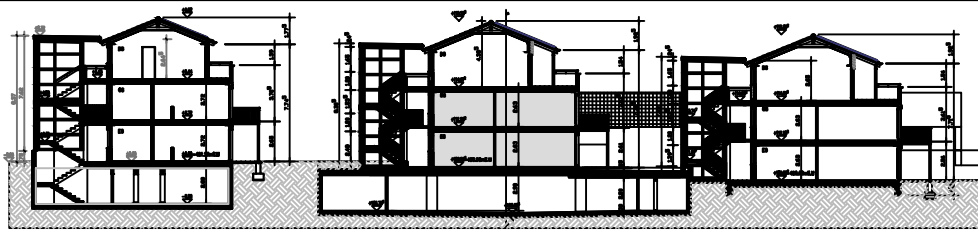
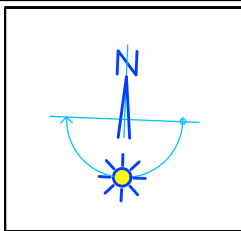
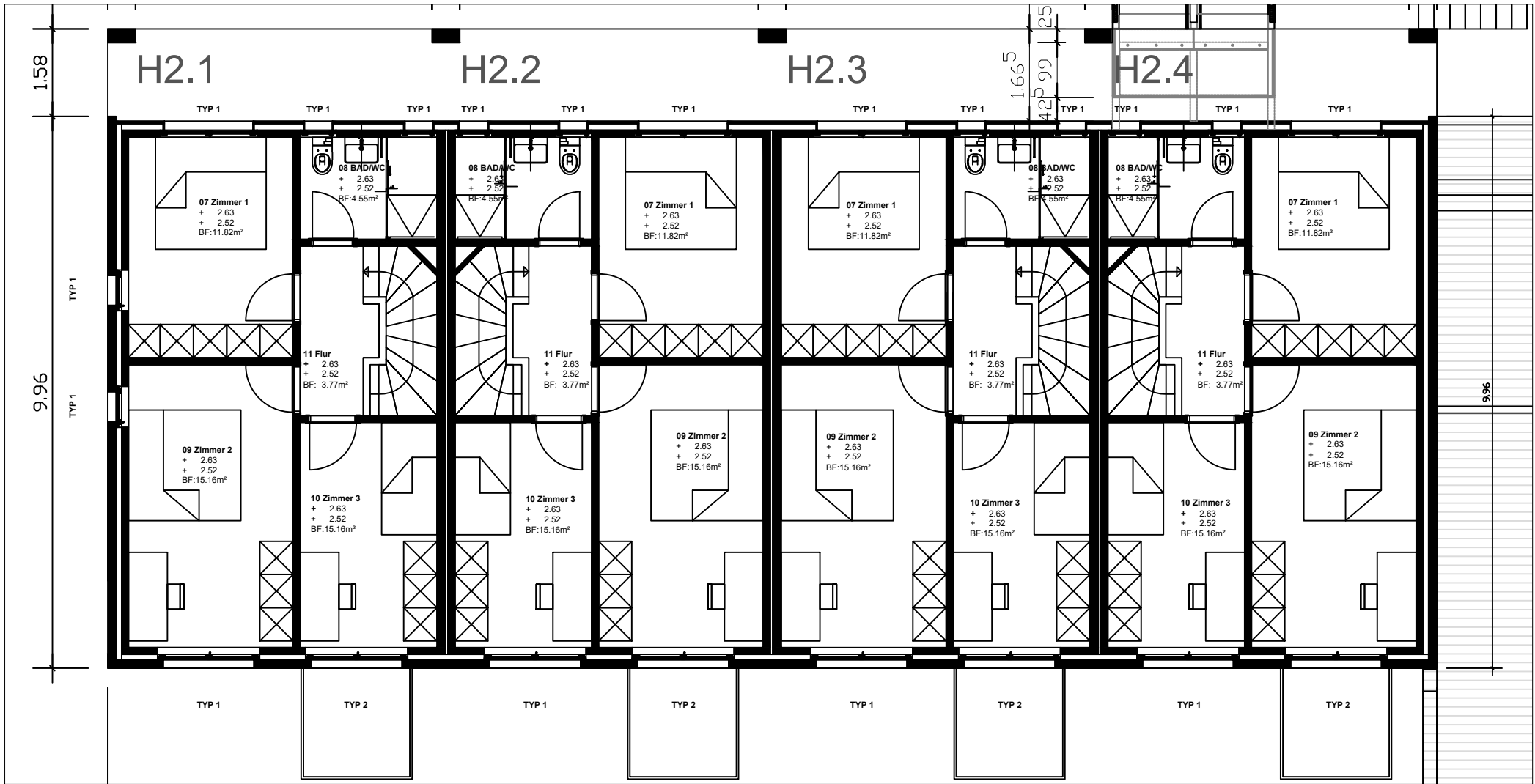
Haus 1 Dachgeschoss 1:100



Wohnungs-Nr: H2.1–H2.4
 Geschoss: EG

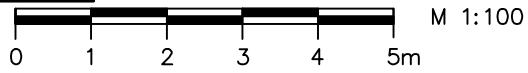
4 1/2 Zimmer– Maisonette Wohnung
 Nettowohnfläche: 51.25m²(H1.1)+51.25m²(H1.2)+51.25m²(H1.3)+51.25m²(H1.4)=205m²
 inkl. Zwischenwände / ohne Aussenwände Wohnungstrennwände

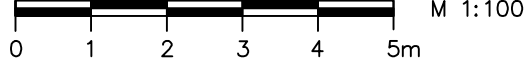
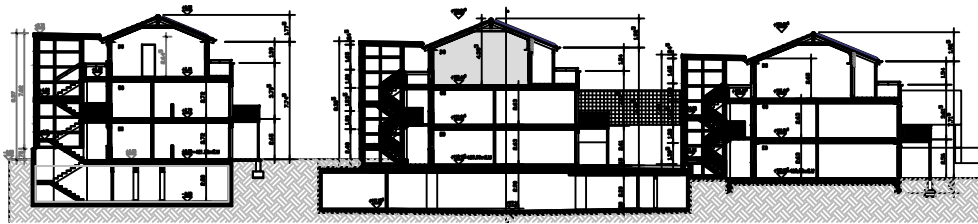
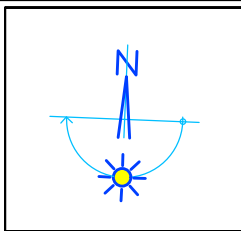
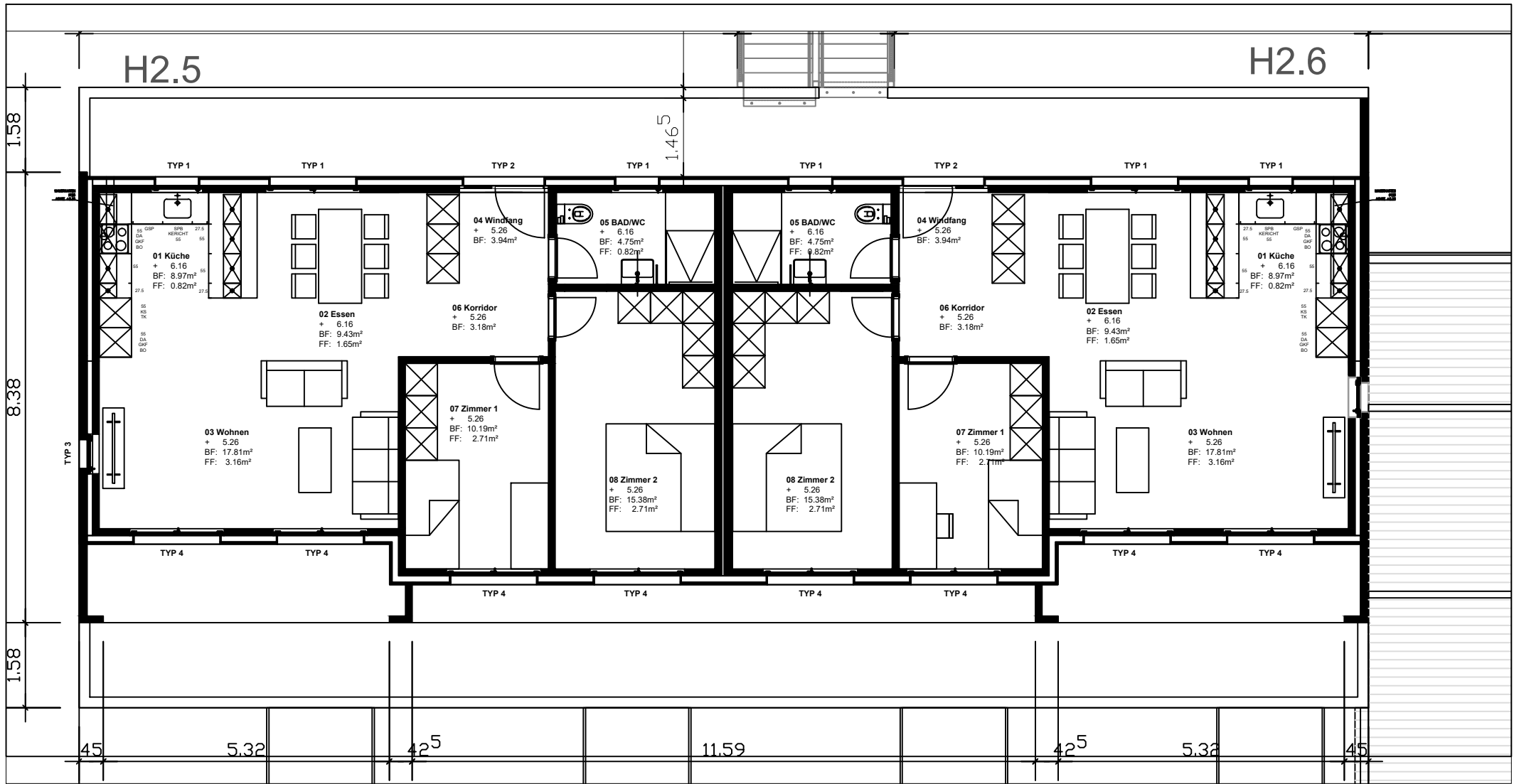




Wohnungs-Nr: H2.1-H2.4
 Geschoss: OG

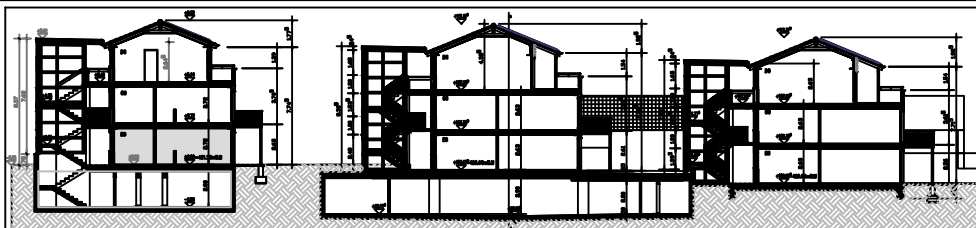
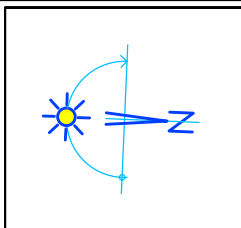
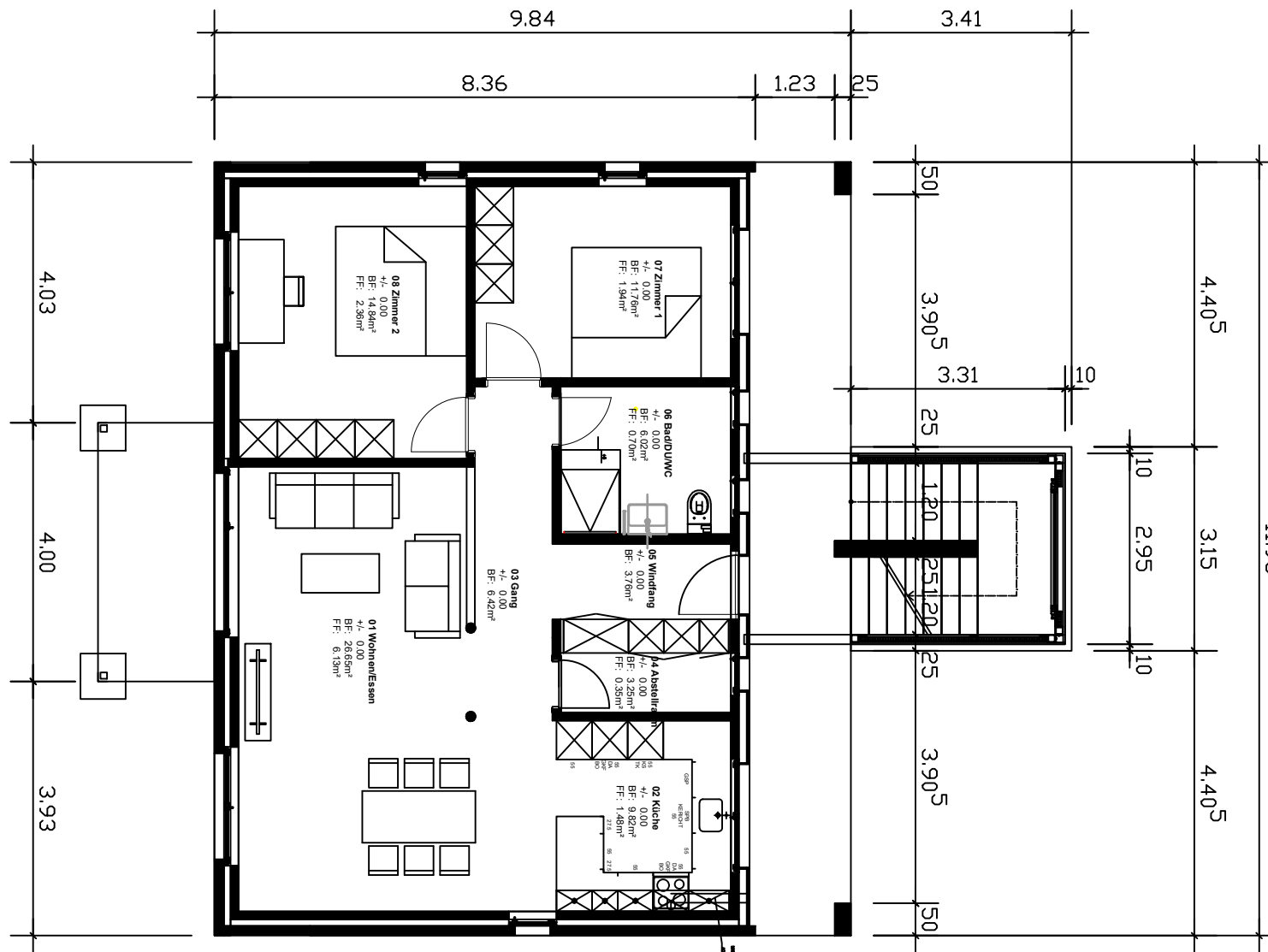
4 1/2 Zimmer- Maisonette Wohnung
 Nettowohnfläche: 51.25m²(H1.1)+51.25m²(H1.2)+51.25m²(H1.3)+51.25m²(H1.4)=205m²
 inkl. Zwischenwände / ohne Aussenwände(Wohnungstrennwand)



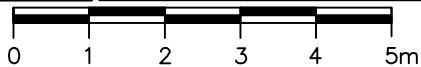


Wohnungs-Nr: H2.5-H2.6
 Geschoss: DG

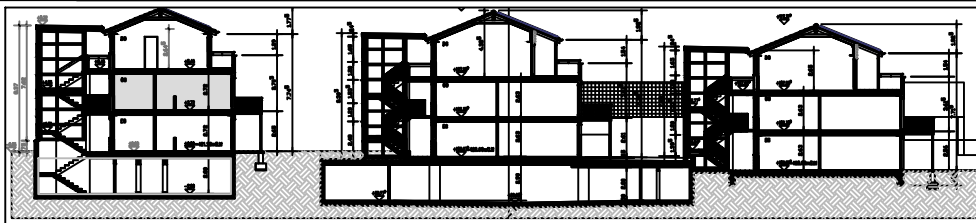
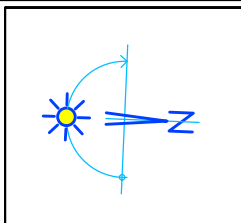
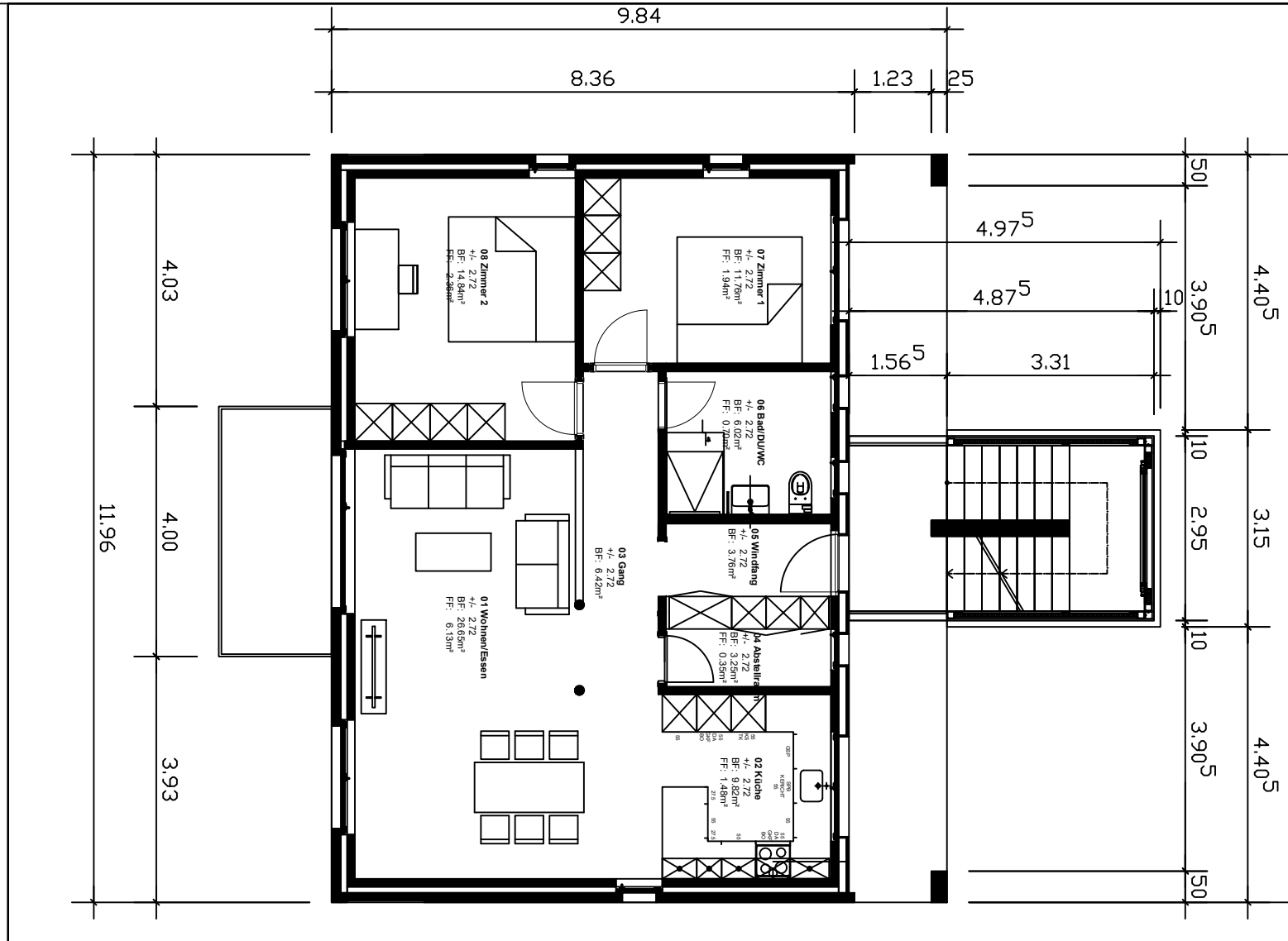
3 1/2 Zimmer- Maisonette Wohnung
 Nettowohnfläche: $75.94m^2(H2.5) + 75.94m^2(H2.6) = 151.88m^2$
 inkl. Zwischenwände / ohne Aussenwände und Wohnungstrennwände



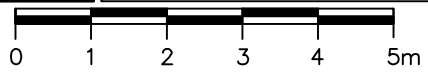
M 1:100



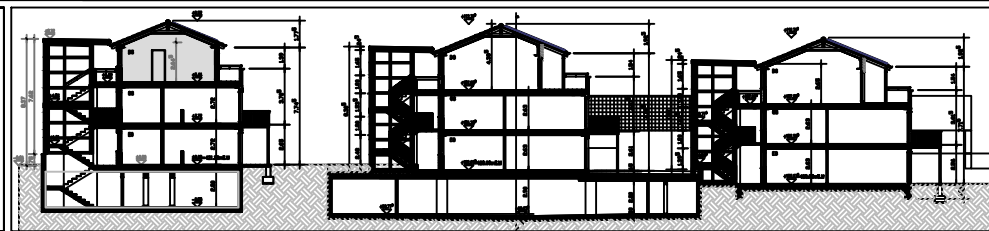
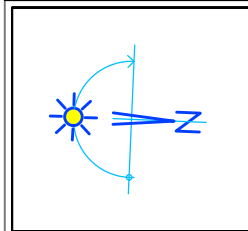
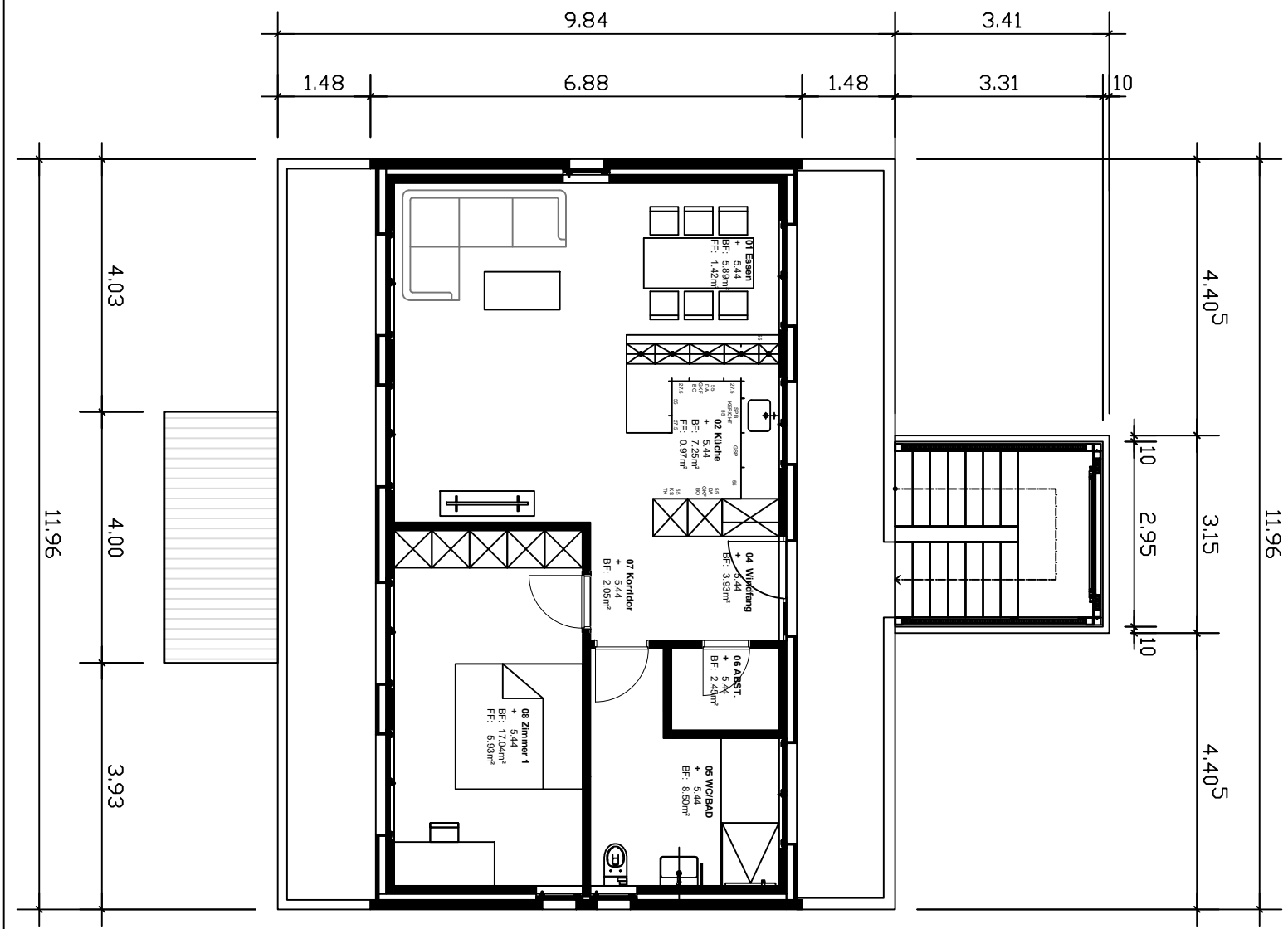
Wohnungs-Nr: H3.1
 Geschoss: EG
 3 1/2 Zimmer-Wohnung
 Nettowohnfläche: 85.30m²(H3.1)
 inkl. Zwischenwände / ohne Aussenwände(Wohnungstrennwand)



M 1:100



Wohnungs-Nr: H3.2
 Geschoss: OG
 3 1/2 Zimmer- Wohnung
 Nettowohnfläche: 85.30m²(H3.2)
 inkl. Zwischenwände / ohne Aussenwände(Wohnungstrennwand)



Wohnungs-Nr: H3.3
 Geschoss: DG
 2 1/2 Zimmer- Wohnung
 Nettowohnfläche: 68.70m²(H3.3)
 inkl. Zwischenwände / ohne Aussenwände(Wohnungstrennwand)

