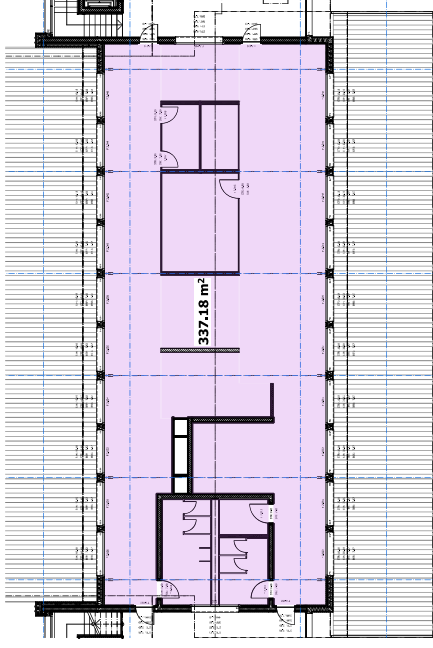
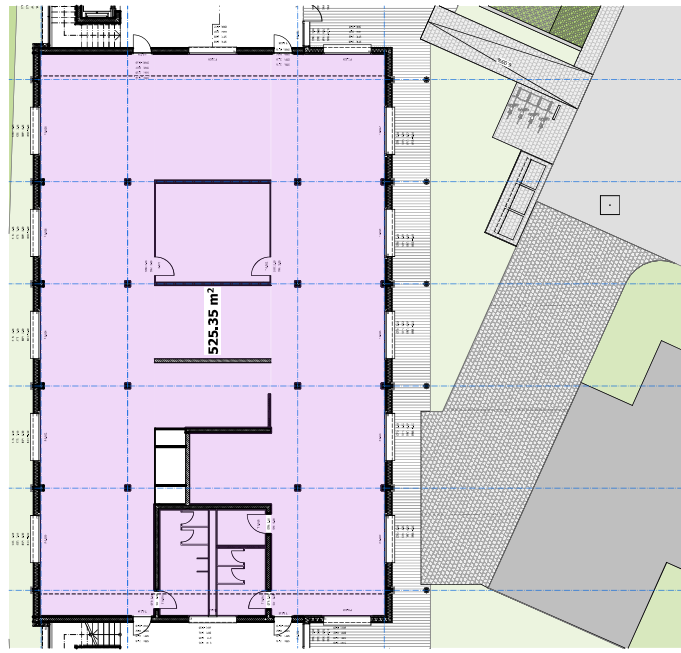


1. Obergeschoss



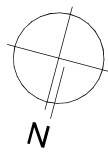
2. Obergeschoss



Erdgeschoss

Legende Büroflächen (lila Flächen):

Erdgeschoss: 525.35m²
1. Obergeschoss: 525.35m²
2. Obergeschoss: 337.18m²
Total: 1'387.88m²



Bauvorhaben
Tödistrasse/Wiesenstrasse
9500 Wül SG
Parz. Nr. 1386W, 1555W, 1565W
+/- 0.00 = +566.28 m ü.M.

Projektmanagement: Maurice Weber
Planung: Janice Federer

Projektnummer: 10012502
Planndatum: 17.09.2025
Plangröße: 297,0 x 210,0
Plannummer: 3-482
Massestab: 1:400
Dateiname: W+P 1001250.2
Engineering Campus

