








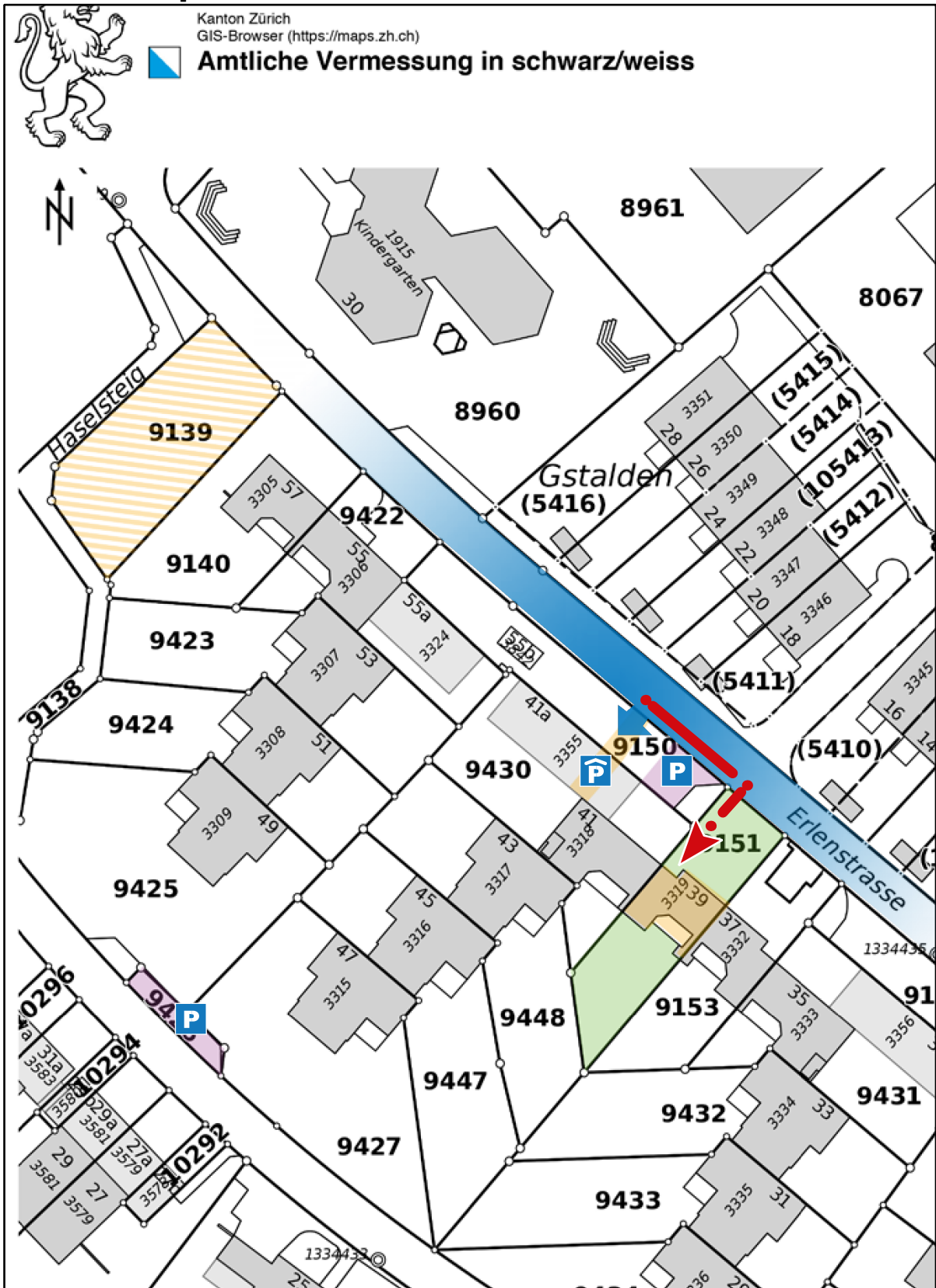
Situation



Location **Horgen, Erlenstrasse 39**

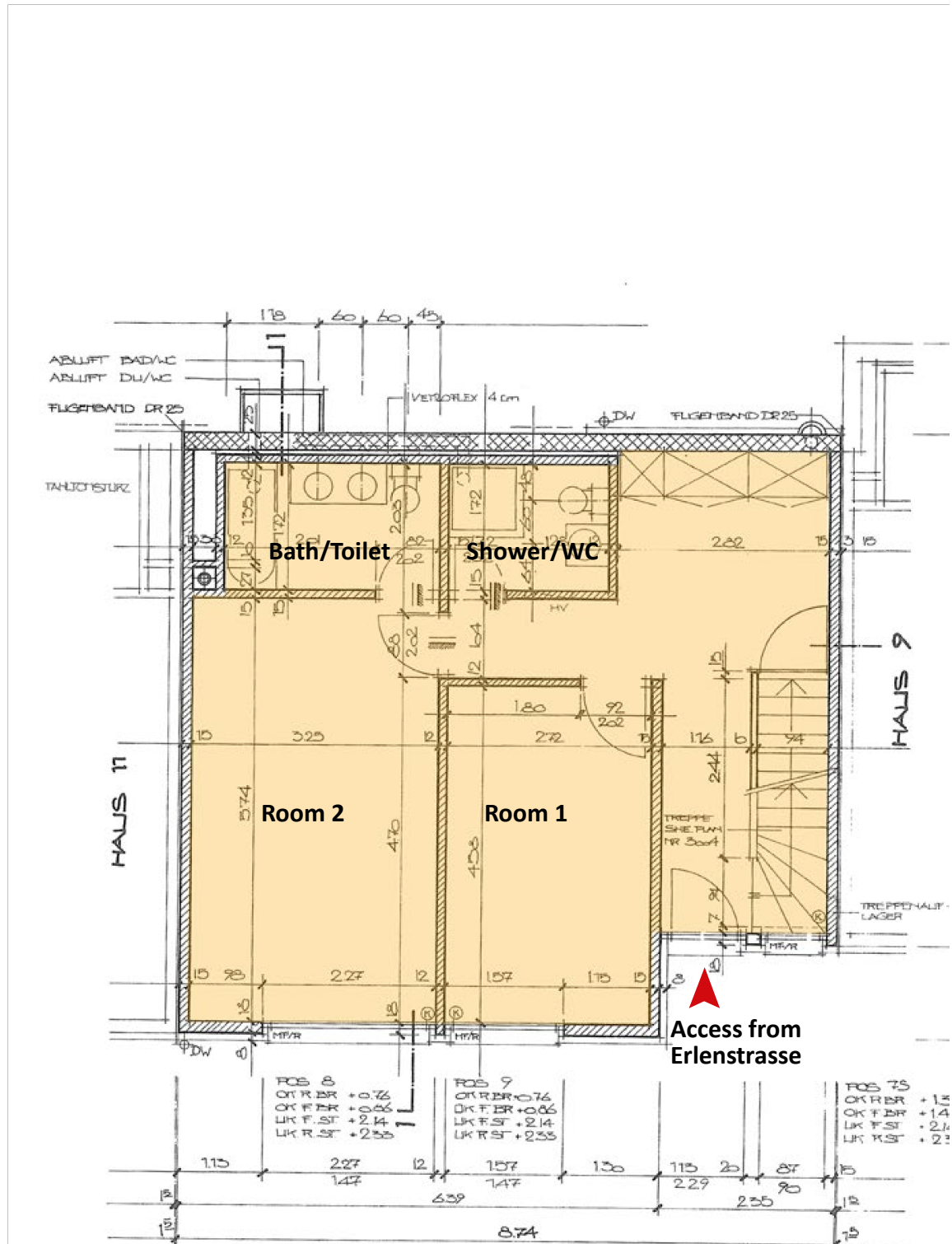
-  Municipality Administration: www.horgen.ch
Tax rate: 87%
-  Bus approx. 400 m to the "Schneegg" bus stop
-  Train approx. 2 km to Horgen train station (direction Zurich) approx. 2 km to Horgen-Oberdorf train station (direction Zug)
-  Shops, post approx. 1100 m
-  Zurich and Zug
-  Schools approx. 400 m to the "Waldegg" primary school and kindergarten
approx. 450 m to the "Allmend" primary school and 650 m kindergarten
approx. 1.3 km to the Berghalden-Rainweg secondary school in Horgen
Cantonal school in Zurich
-  Day care approx. 50 m to the day-care "Fischenrüti"

Cadastral plan



- Plot
- Ownership/ Co-ownership
- P Visitor parking/ Co-ownership
- P Garage
- Driveway

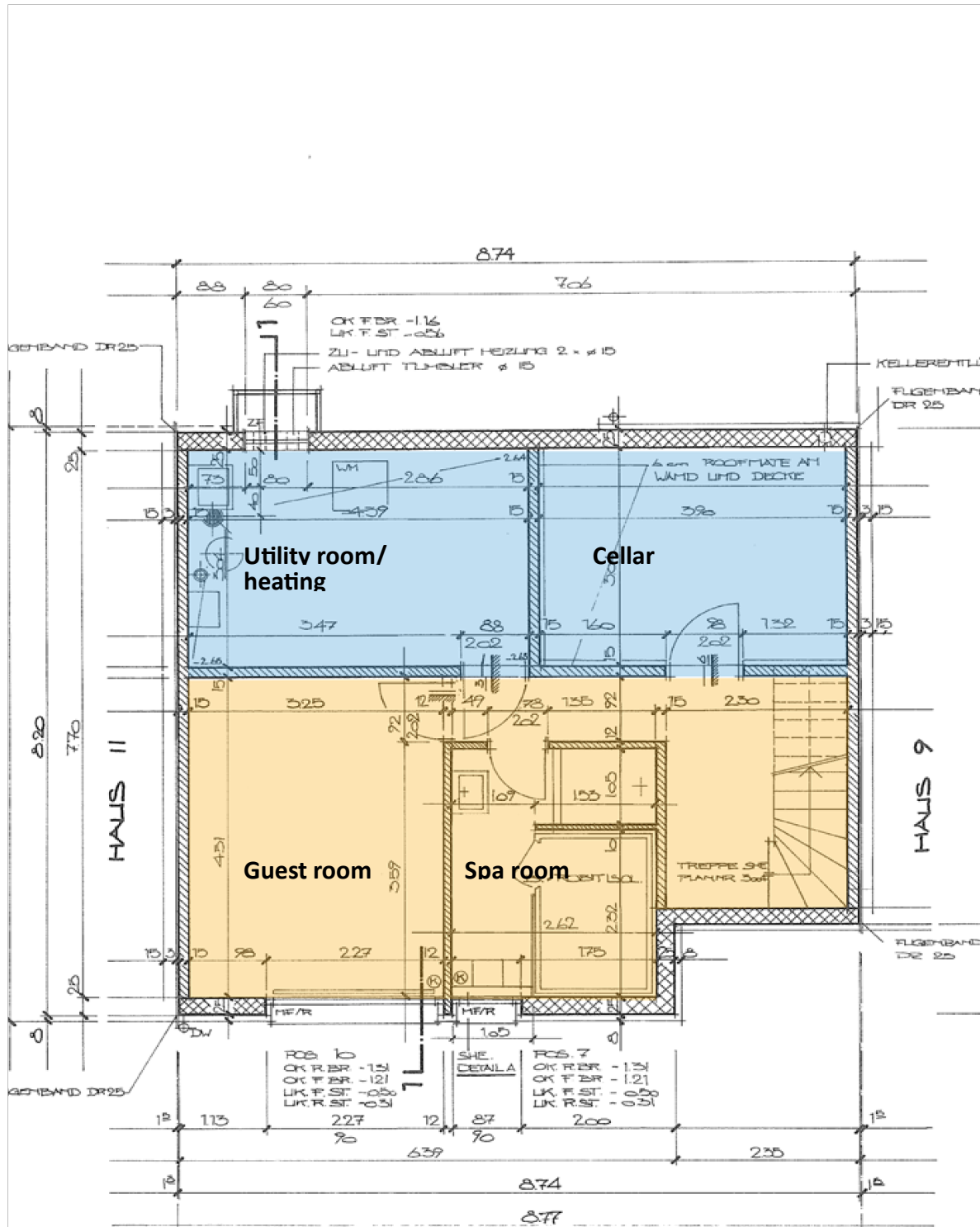
Layout of base floor



Living area
 External spaces
 Ancillary spaces

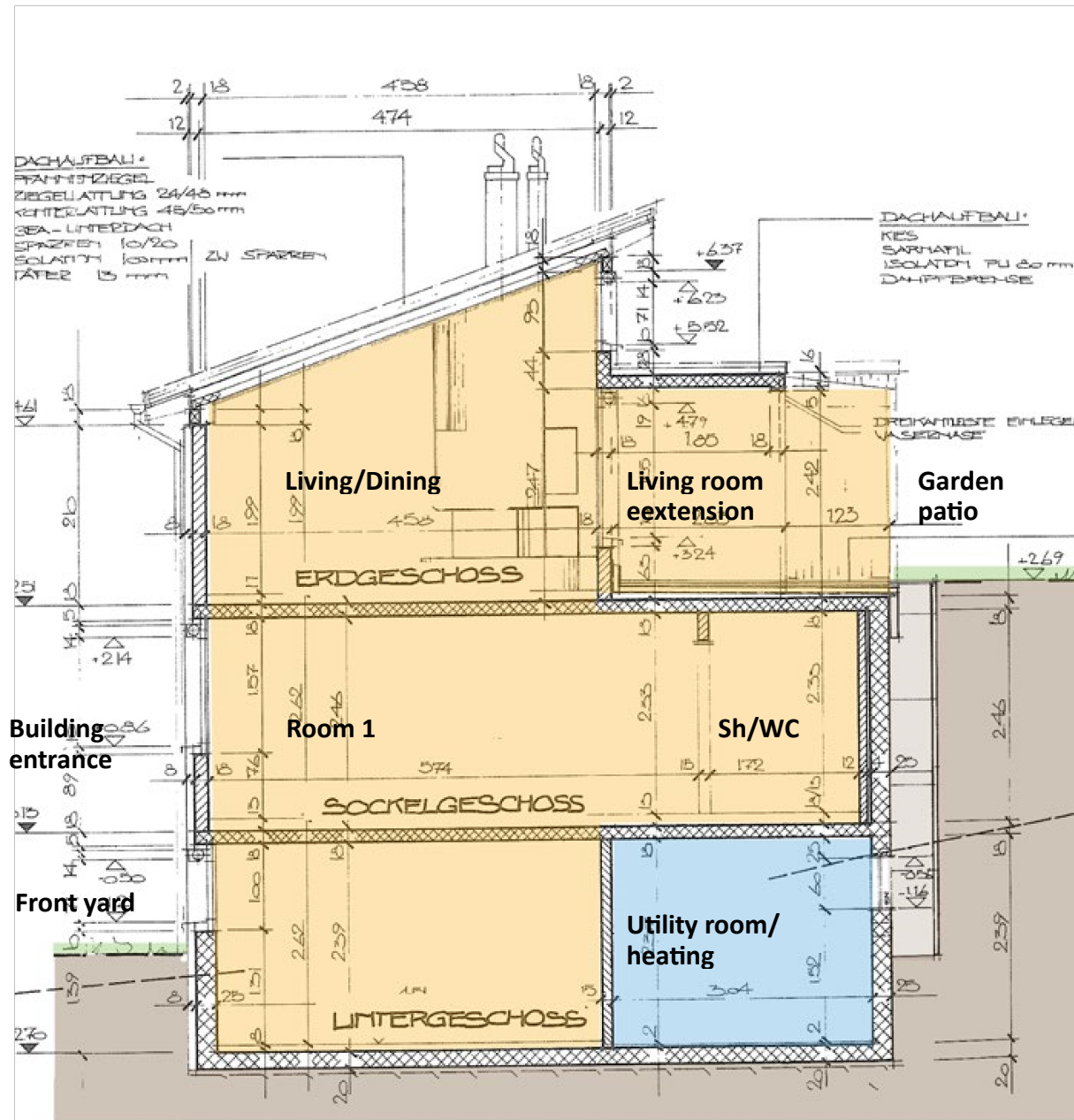

 Access from Erlenstrasse

Layout Lower ground floor



- Living area
- External spaces
- Ancillary spaces

Section



Living area

External spaces

Ancillary spaces