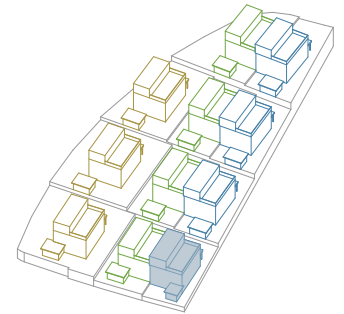
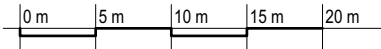


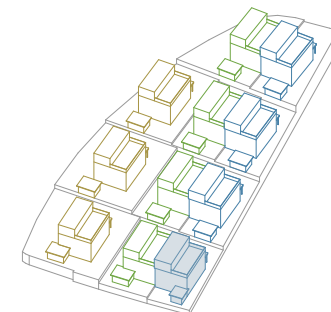
Masstab
1:500



EG Umgebung Talblickstrasse 21



Masstab
1:500

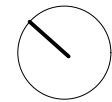


EG Umgebung Talblickstrasse 21

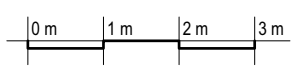
Wohnüberbauung Talblick | Talblickstrasse | 8492 Wila | 06.04.2024

Bruttowohnfläche ca. 68.3m²
 Nettowohnfläche ca. 66.2m²

Bruttowohnfläche ca. 68.3m²
 Nettowohnfläche ca. 66.2m²

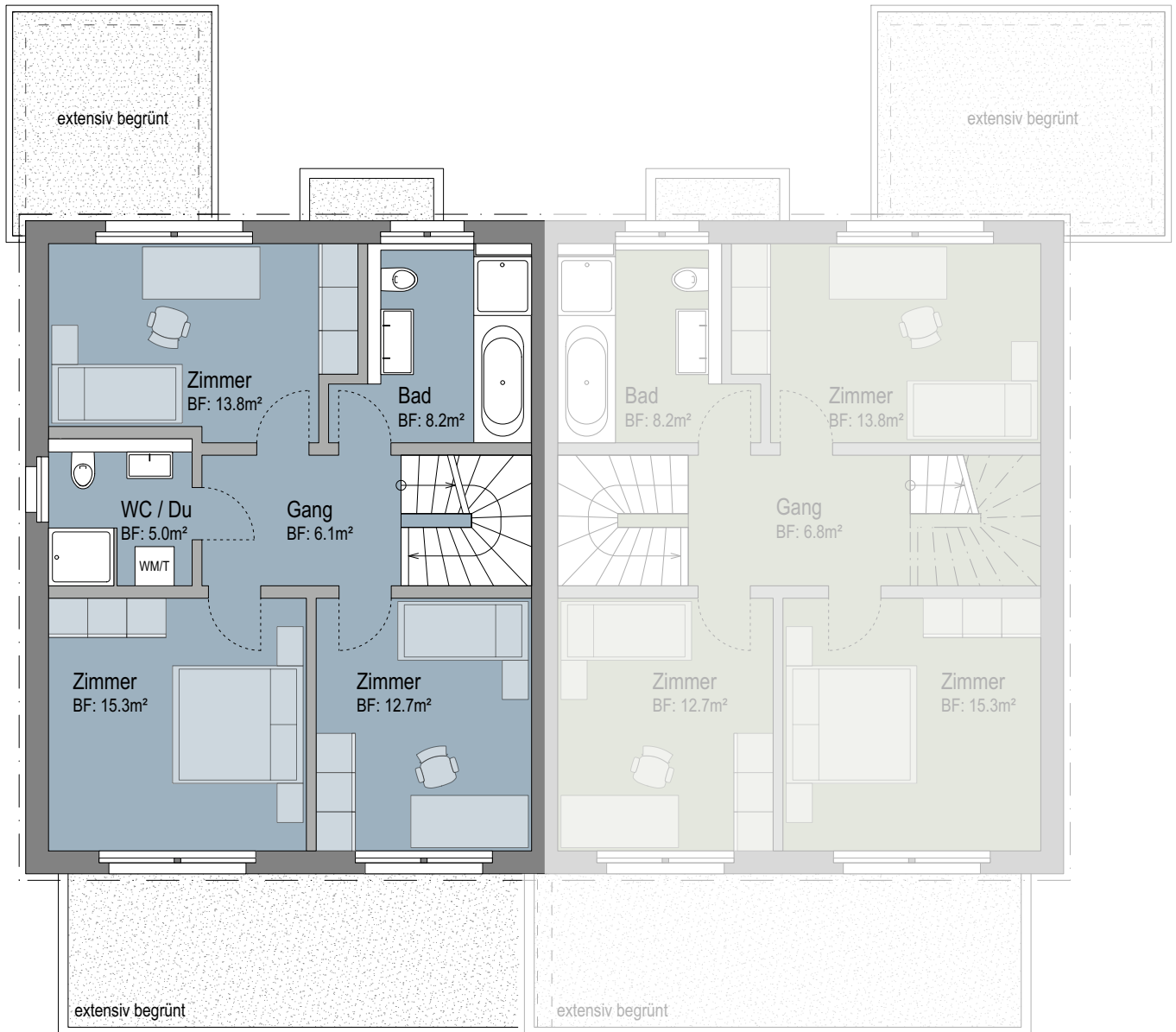
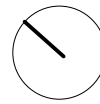


Erdgeschoss Talblickstrasse 21
Masstab 1:100

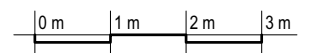


Bruttowohnfläche ca. 68.3m²
Nettowohnfläche ca. 65.1m²

Bruttowohnfläche ca. 68.3m²
Nettowohnfläche ca. 63.4m²

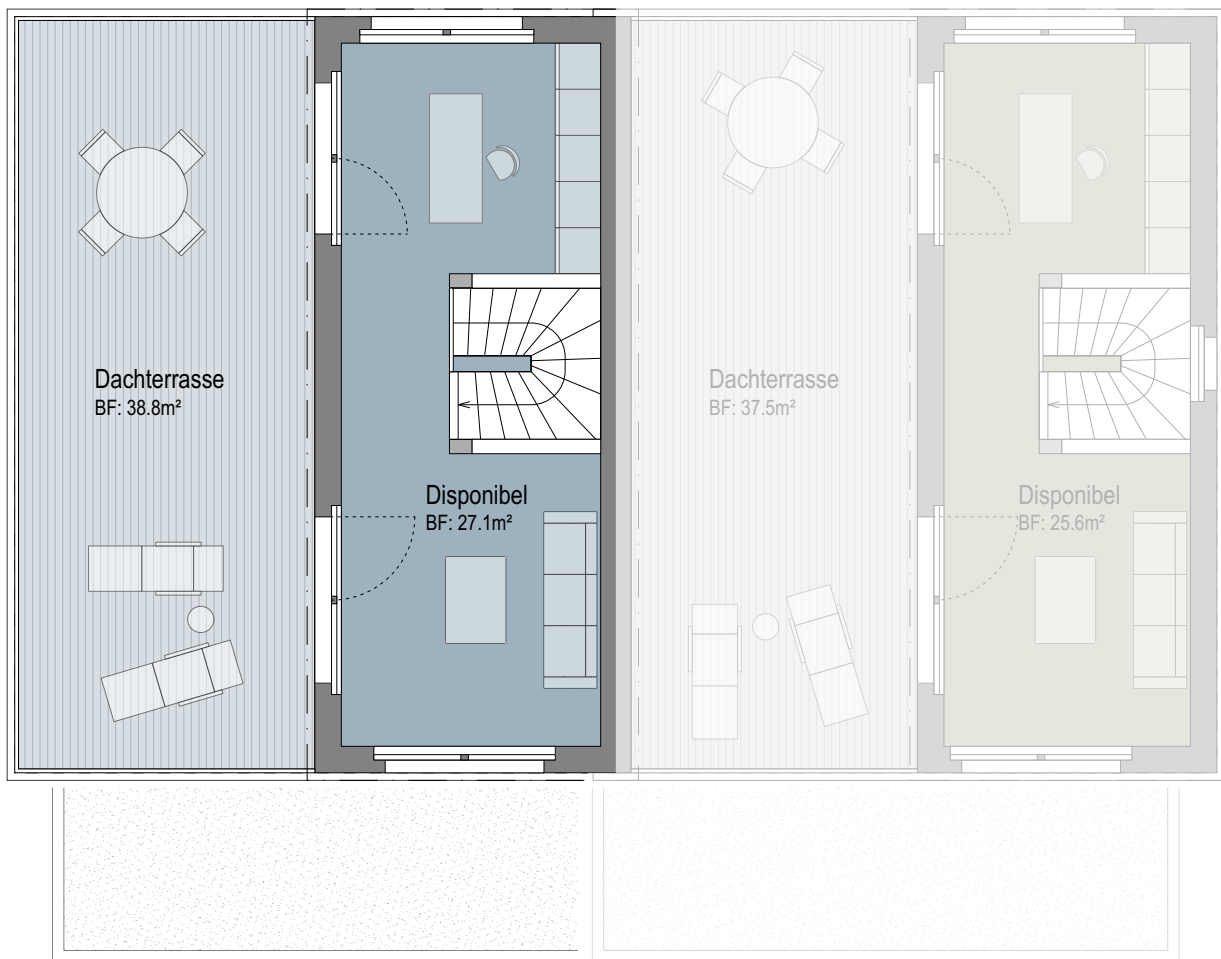
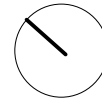


**Obergeschoss Talblickstrasse 21
Masstab 1:100**

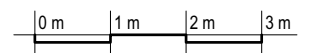


Bruttowohnfläche ca. 31.9m²
Nettowohnfläche ca. 29.3m²

Bruttowohnfläche ca. 30.3m²
Nettowohnfläche ca. 27.7m²

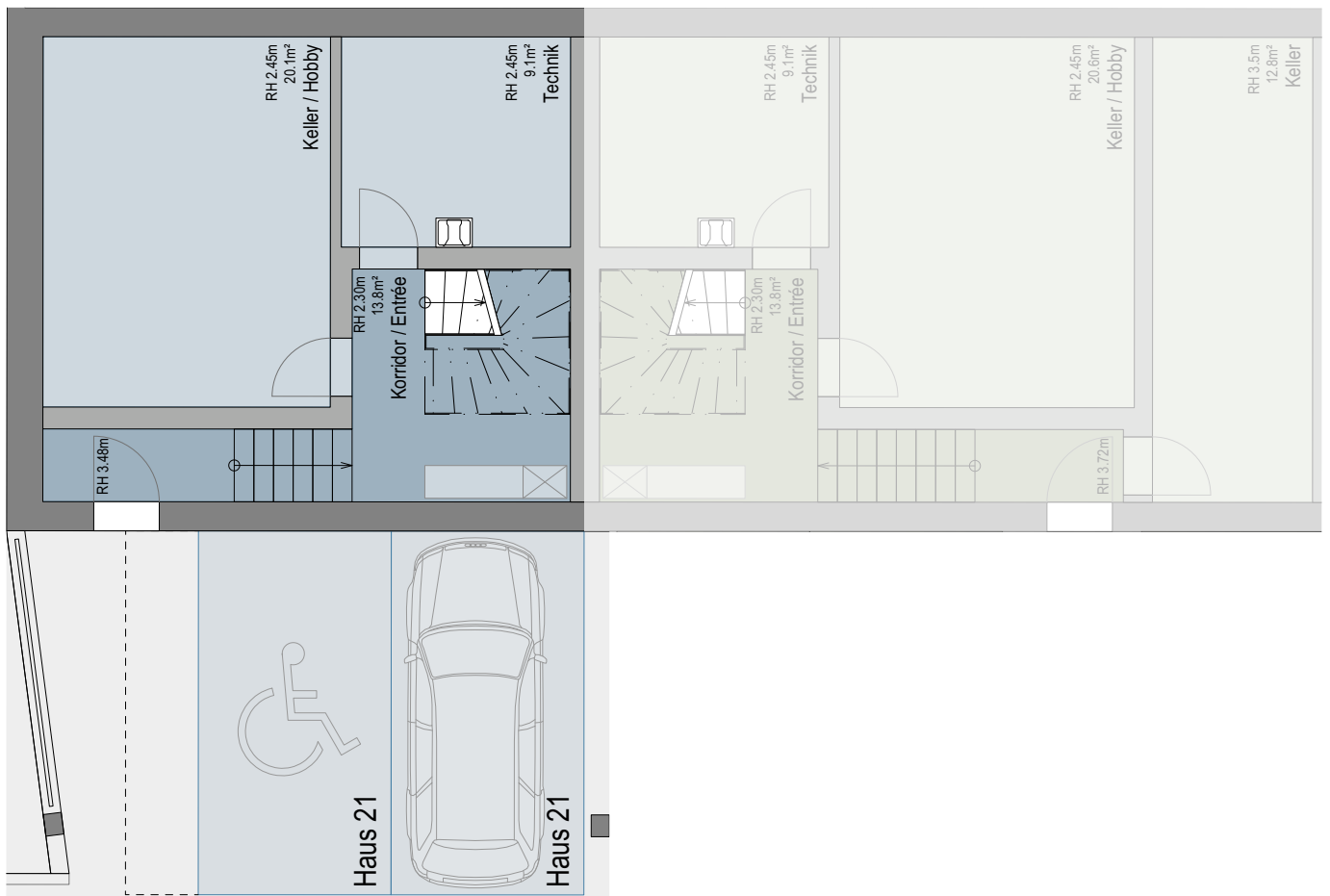
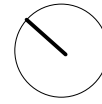


Dachgeschoss Talblickstrasse 21
Masstab 1:100

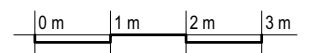


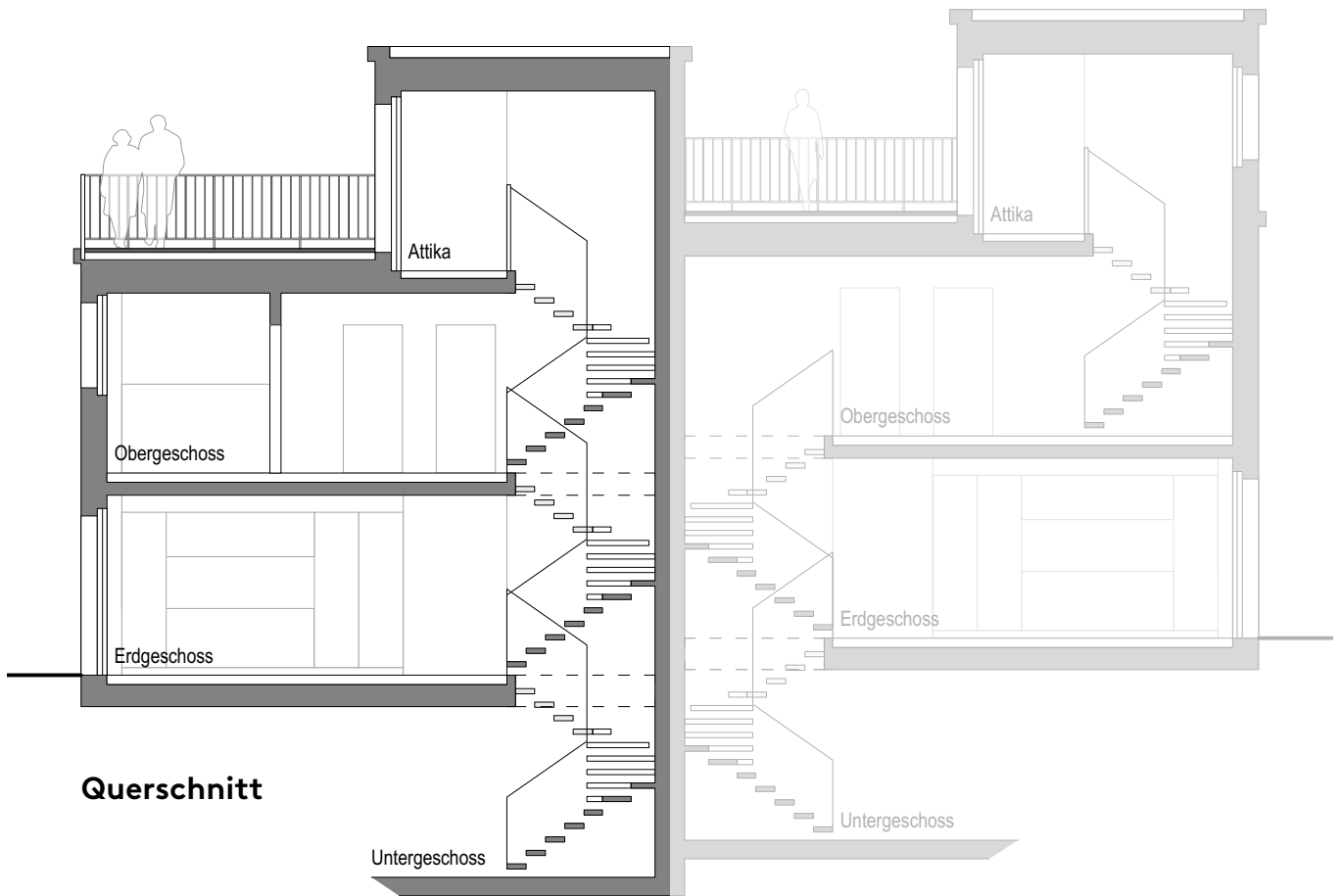
Bruttowohnfläche ca. 31.9m²
 Nettowohnfläche ca. 29.3m²

Bruttowohnfläche ca. 30.3m²
 Nettowohnfläche ca. 27.7m²

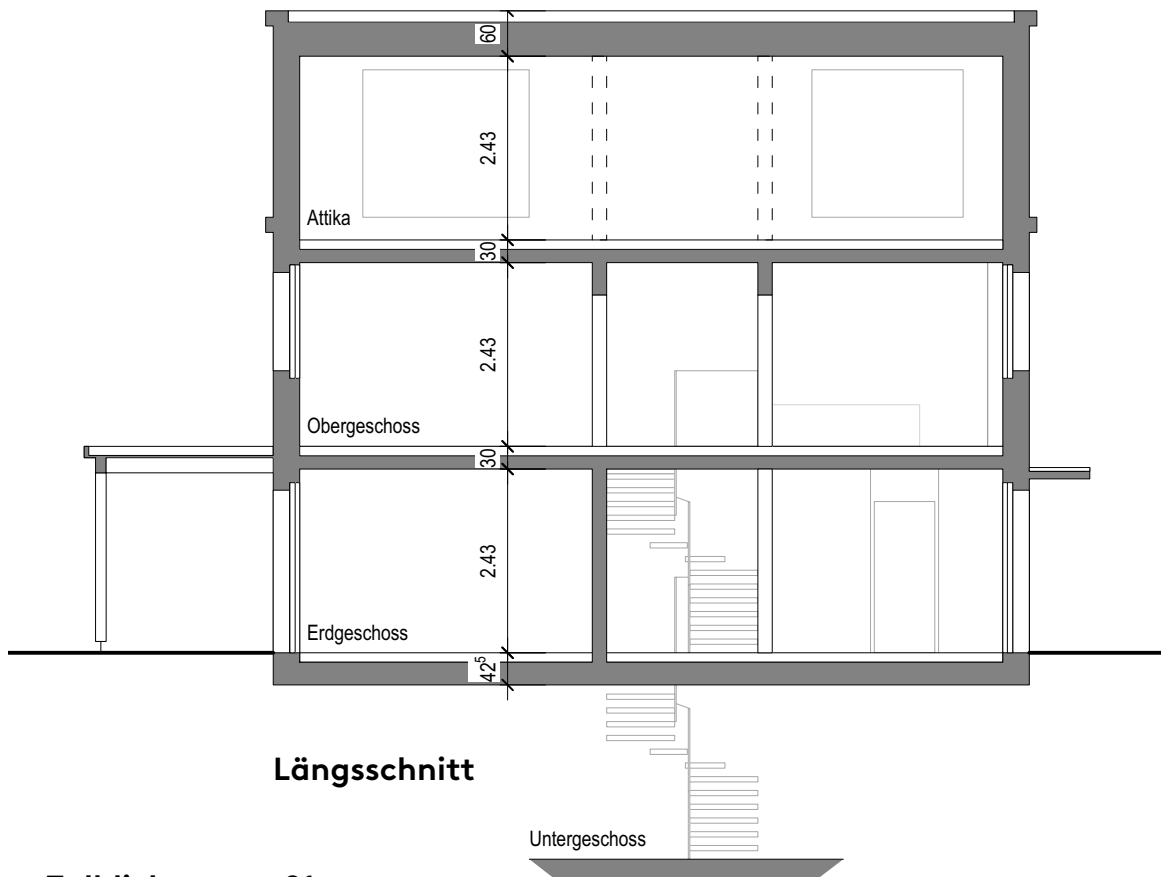


Kellergeschoss Talblickstrasse 21
Masstab 1:100





Querschnitt



Längsschnitt

**Schnitte Talblickstrasse 21
 Masstab 1:100**

