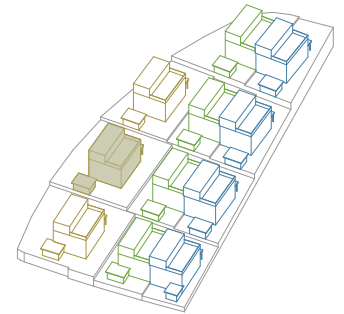
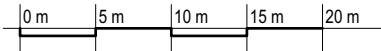


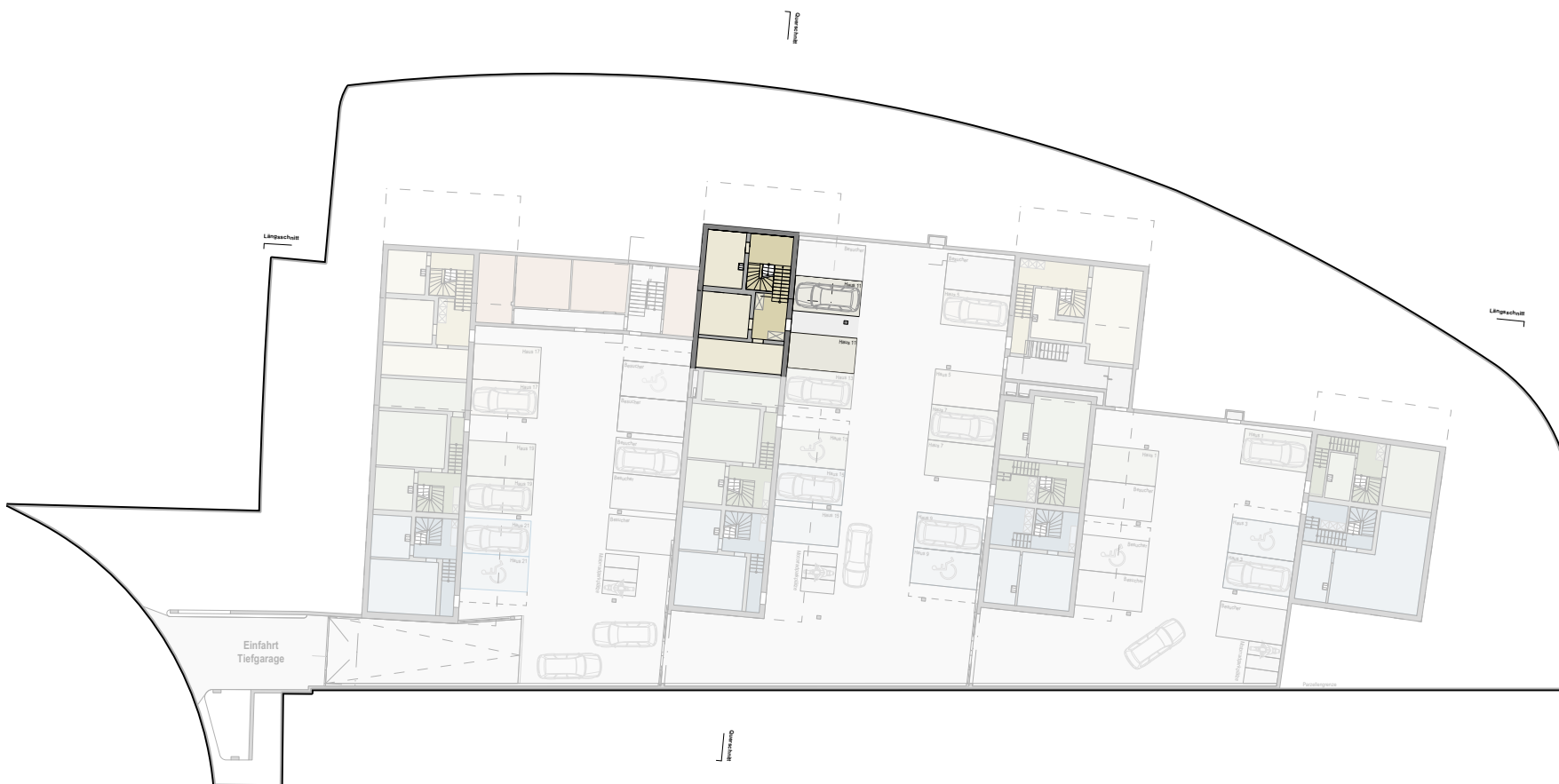
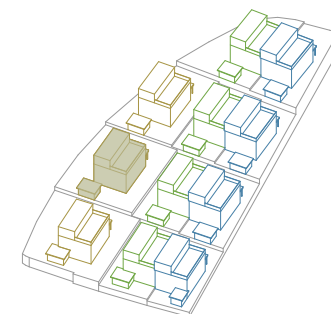
Masstab
1:500



EG Umgebung Talblickstrasse 11



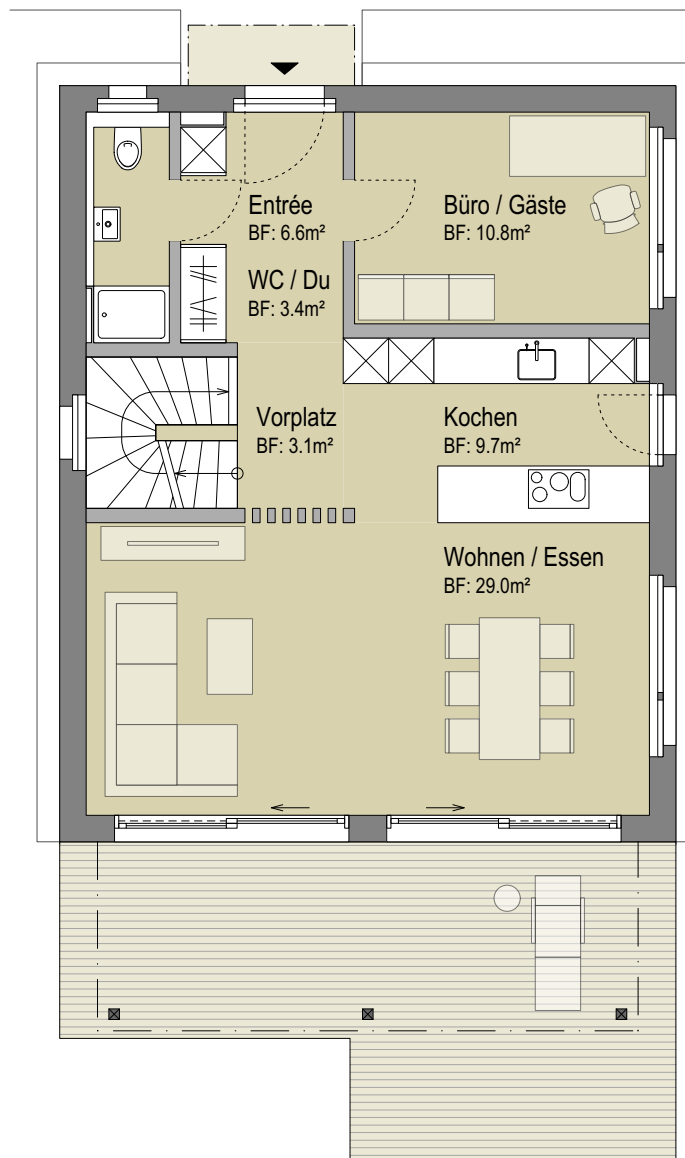
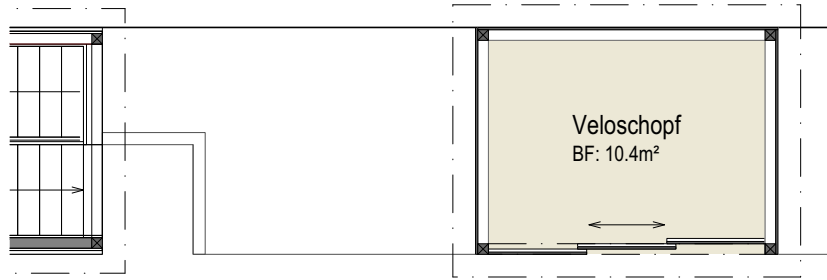
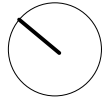
Masstab
1:500



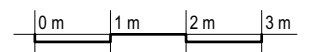
EG Umgebung Talblickstrasse 11

Wohnüberbauung Talblick | Talblickstrasse | 8492 Wila | 06.04.2024

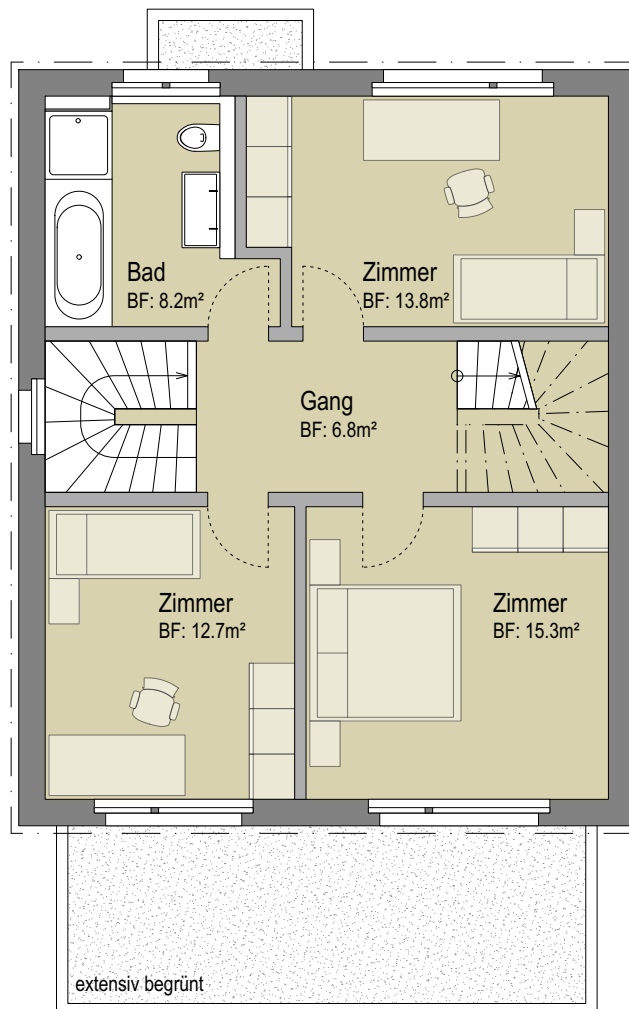
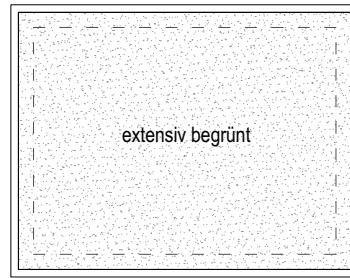
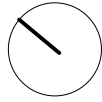
Bruttowohnfläche ca. 69.3m²
Nettowohnfläche ca. 66.6m²



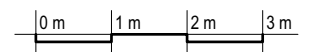
Erdgeschoss Talblickstrasse 11
Masstab 1:100



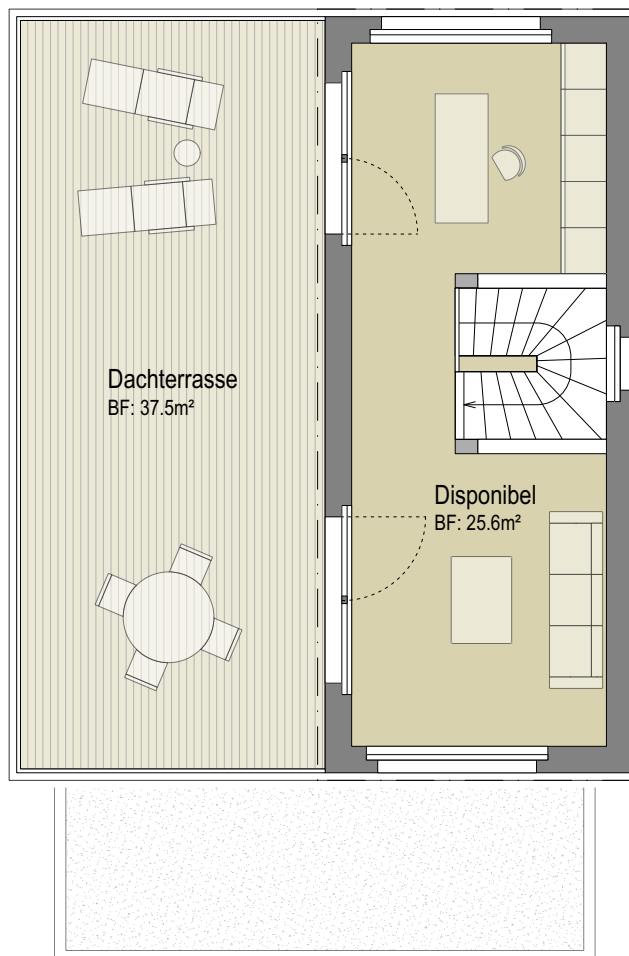
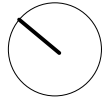
Bruttowohnfläche ca. 69.3m²
Nettowohnfläche ca. 63.9m²



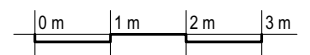
Obergeschoss Talblickstrasse 11
Masstab 1:100



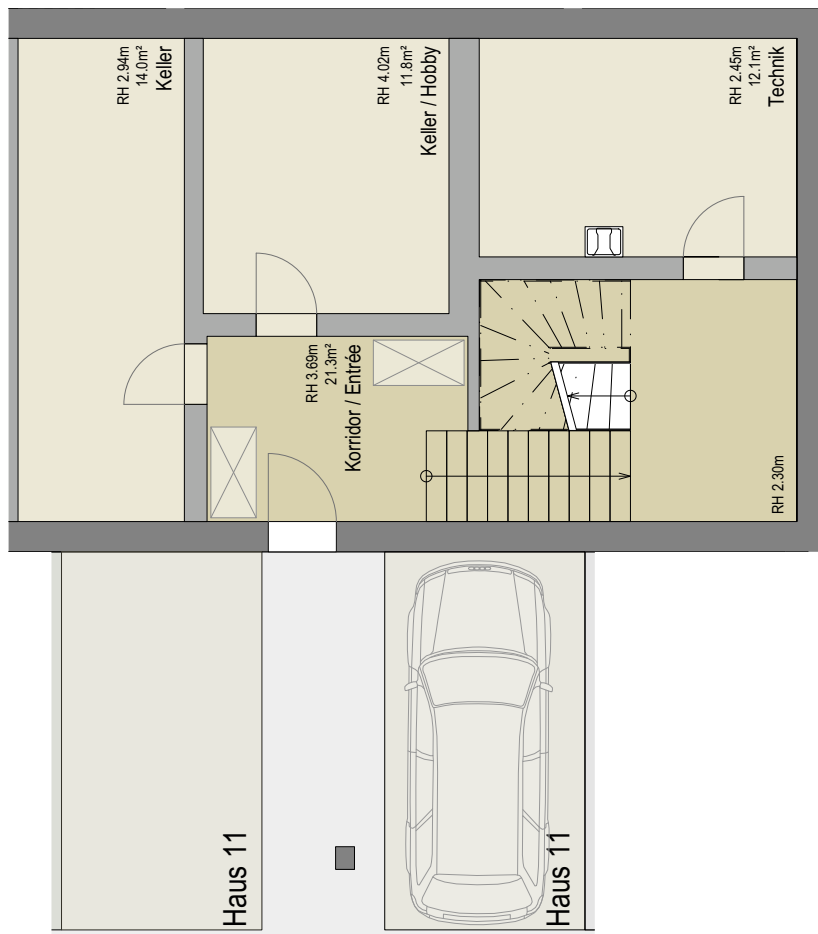
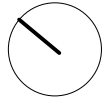
Bruttowohnfläche ca. 31.3m²
Nettowohnfläche ca. 28.7m²



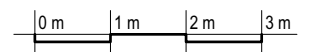
Dachgeschoss Talblickstrasse 11
Masstab 1:100

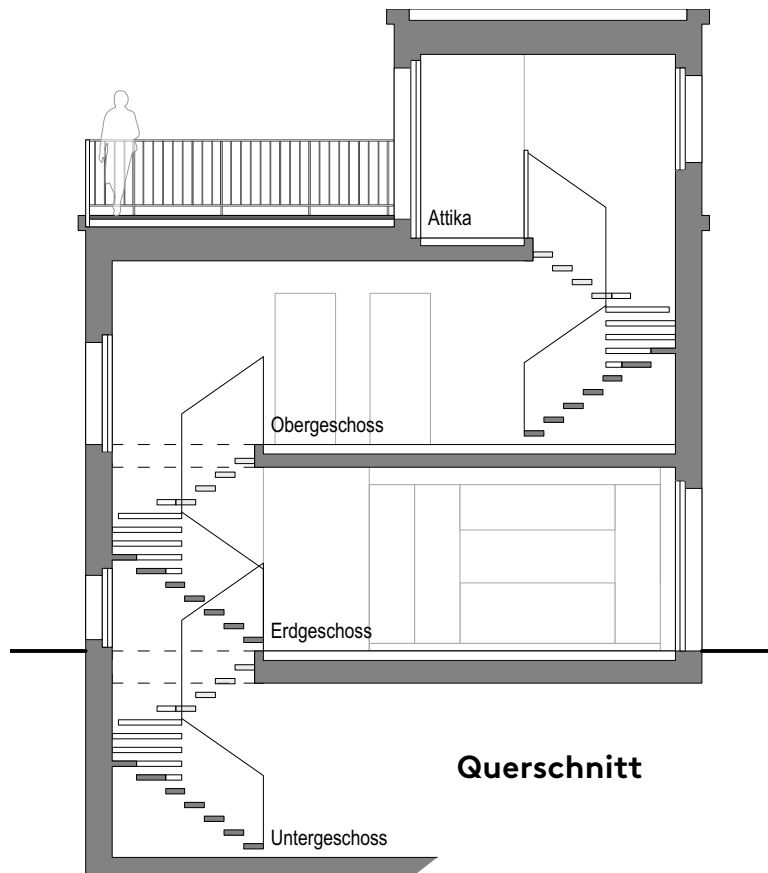
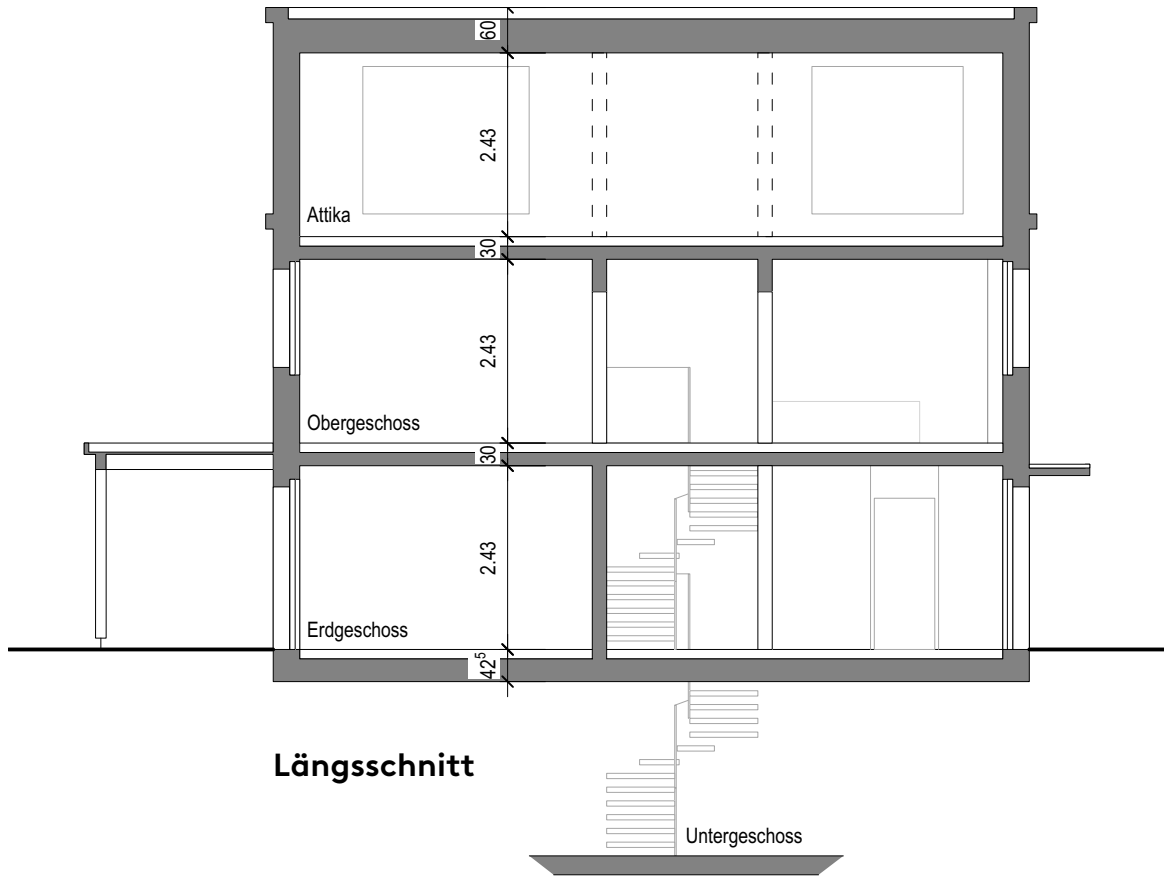


Bruttowohnfläche ca. 31.3m²
Nettowohnfläche ca. 28.7m²



**Kellergeschoss Talblickstrasse 11
Masstab 1:100**





**Schnitte Talblickstrasse 11
Masstab 1:100**

