

# 1. UND 2.OBERGESCHOSS / HAUS C

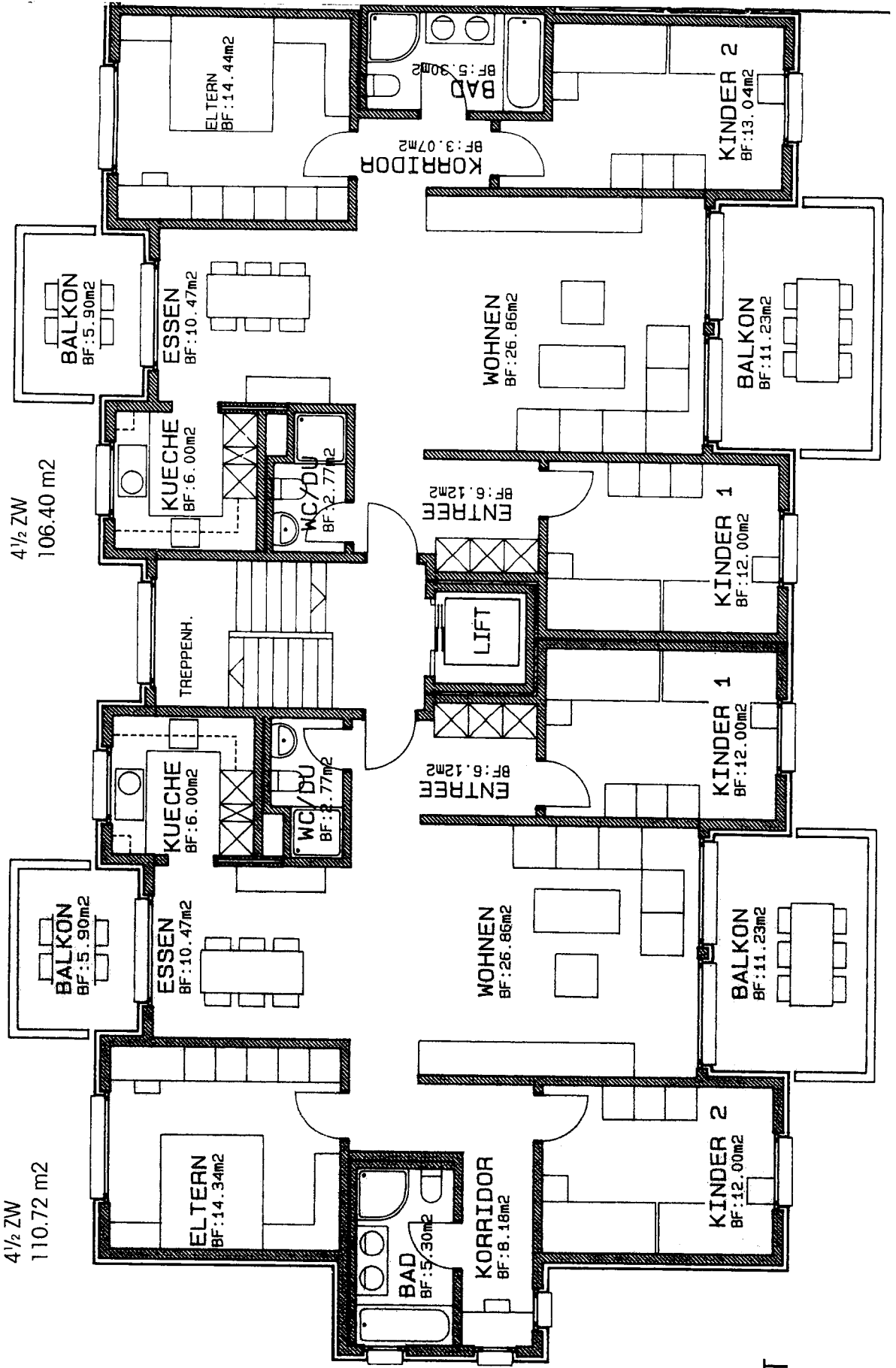
M. 1:100

1.OG Nr.3  
2.OG Nr.5

4 1/2 ZW  
110.72 m<sup>2</sup>

1.OG Nr.4  
2.OG Nr.6

4 1/2 ZW  
106.40 m<sup>2</sup>



WEST