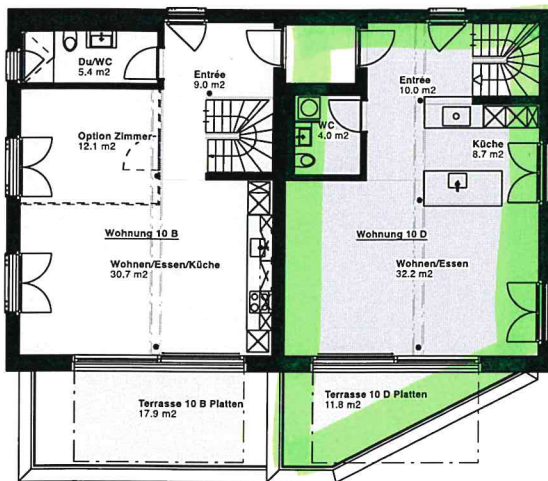
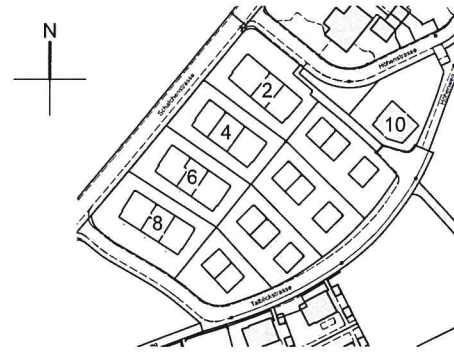


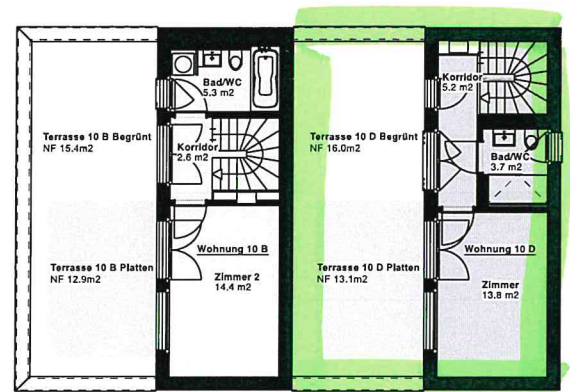
Überbauung Talblick  
 Höhenstrasse 10A - 10D  
 8492 Wila  
 Obergeschoss / Dachgeschoss  
 1:200

Stand: 16.01.2024

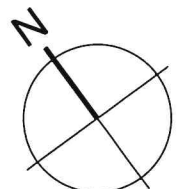
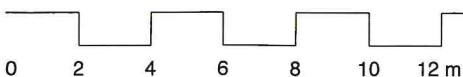
Änderungen vorbehalten



Obergeschoss



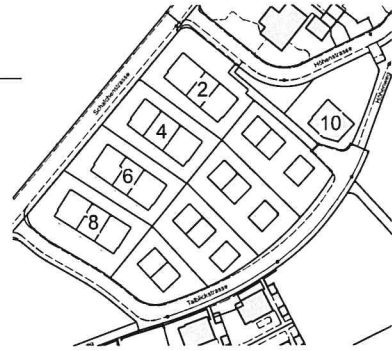
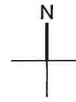
Dachgeschoss



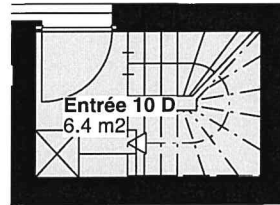
Überbauung Talblick  
Höhenstrasse 10D, 2.5 Zimmer  
8492 Wila  
Obergeschoss  
Fläche Total: 84.0m<sup>2</sup>  
1:100

Stand: 16.01.2024

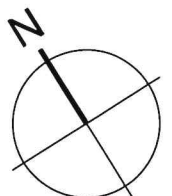
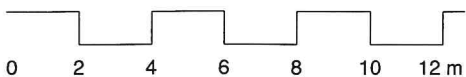
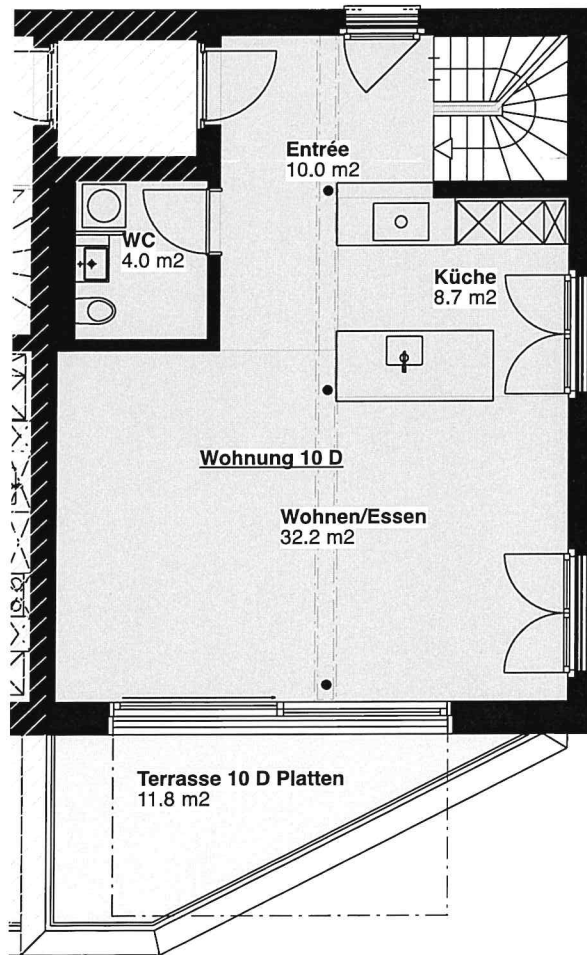
Änderungen vorbehalten



Höhenstr. 10 D



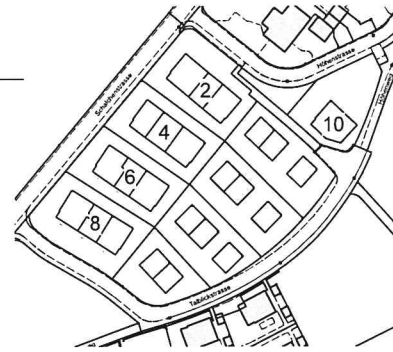
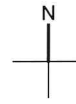
Eingang



Überbauung Talblick  
Höhenstrasse 10D, 2.5 Zimmer  
8492 Wila  
Dachgeschoss  
Fläche Total: 84.0m<sup>2</sup>  
1:100

Stand: 16.01.2024

Änderungen vorbehalten



Architektengruppe

4

