

FIXPUNKT ±000  
427.04 M.U.M.EER

LETTENSTRASSE

LETTENSTRASSE

NEUE ERSCHLIESUNGSSTRASSE

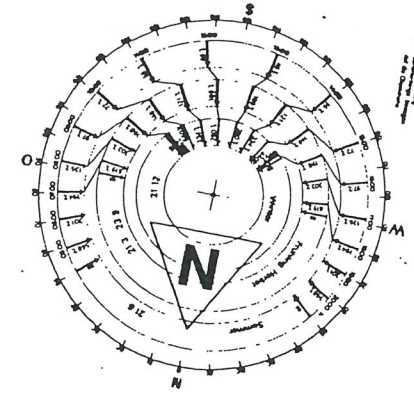
EG R - 120  
HÄUSER 1+2

EG R - 240  
HÄUSER 3+4

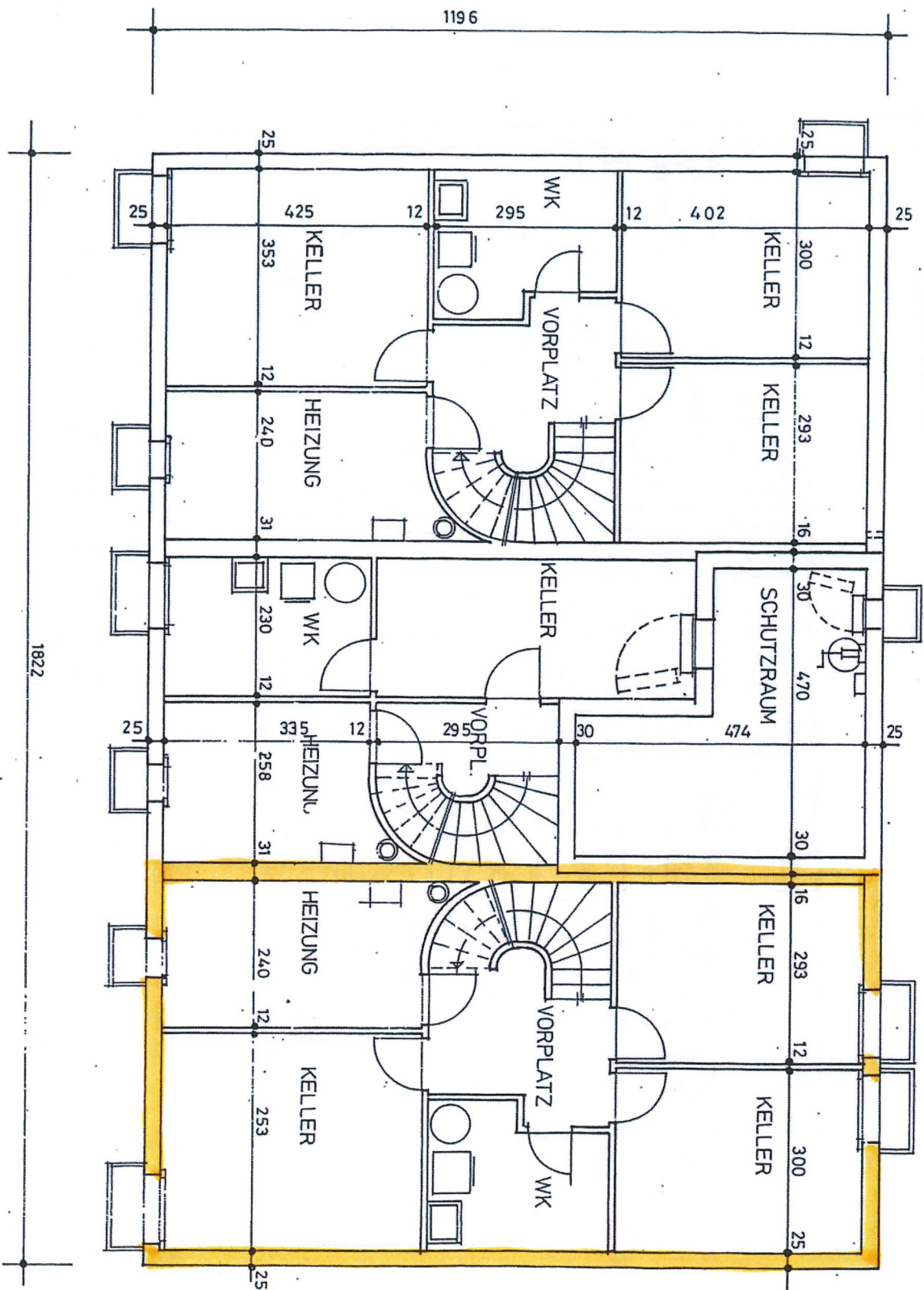
EG R - 340  
HÄUSER 7-8-9

EG R - 360  
HÄUSER 5+6

EG R - 320  
HÄUSER 10-11-12



P 21c



UNTERGESCHOSS

ERDGESCHOSS

