

Neubau 4-Familienhaus «Suot Cruscheda»

Via San Spiert 9
CH-7504 Pontresina / Engadin

VERKAUFS-DOKUMENTATION

VERKAUF

Baugesellschaft Cruscheda
c/o Dancler SA

urs.pfister@dancler.ch

Bauherrschaft: Baugesellschaft Cruscheda

Architekt: Stricker Architekten AG :: 7504 Pontresina





via
san spiert

via
cruscheda

eingang

zurfahrt
tiefgarage

freihaltebereich a
(bauverbot)

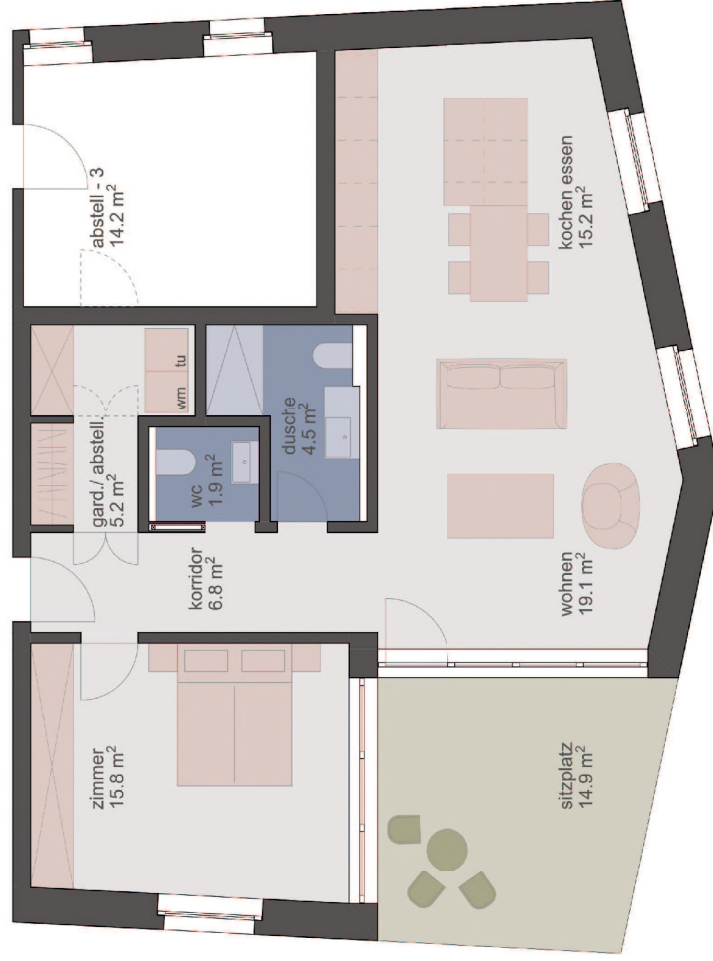
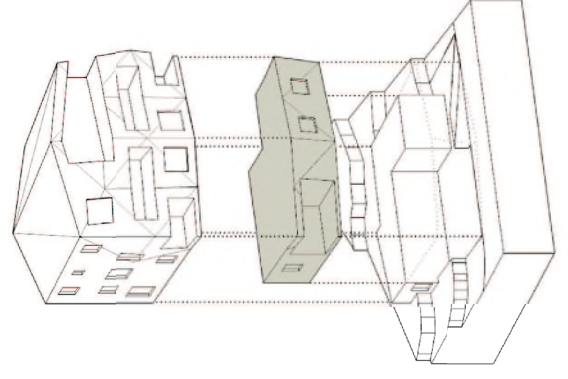
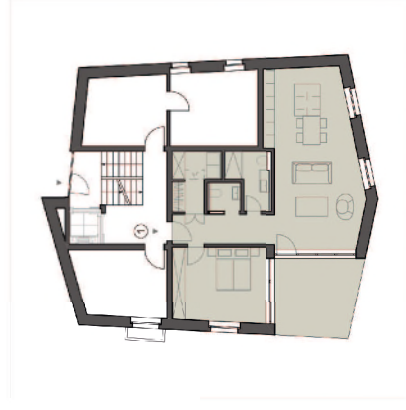
umgebung

planung +beratung
stricker architekten

WOHNUNG 1 - 2 1/2-ZIMMER-WOHNUNG ERDGESCHOSS

WOHNFLÄCHE (BGF): 77.2 M²

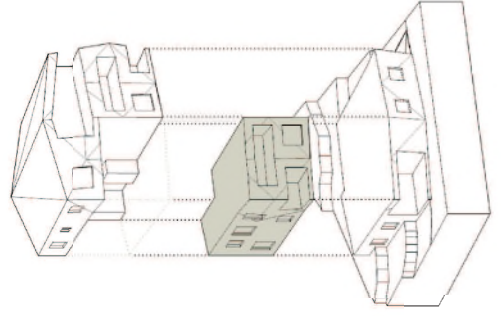
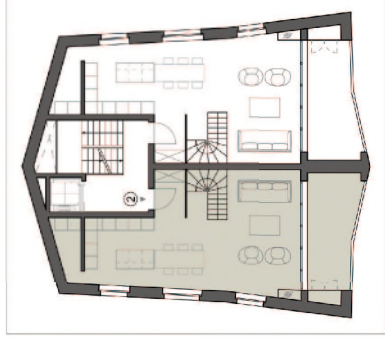
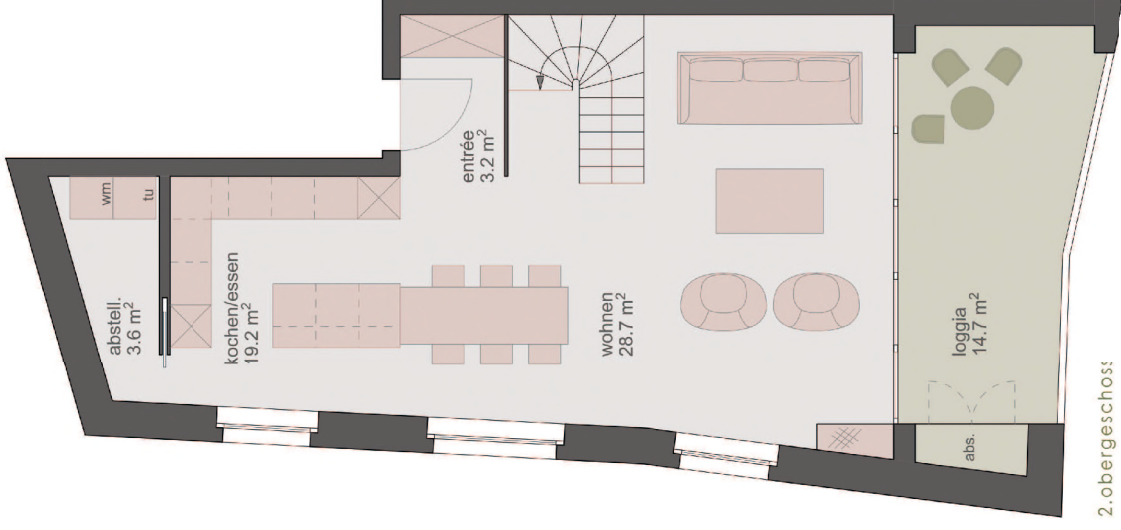
SITZPLATZ: 14.9 M²



WOHNUNG 2 - 4 1/2-ZIMMER-WOHNUNG 1. & 2. OBERGESCHOSS

WOHNFLÄCHE (BGF): 129,0 M²

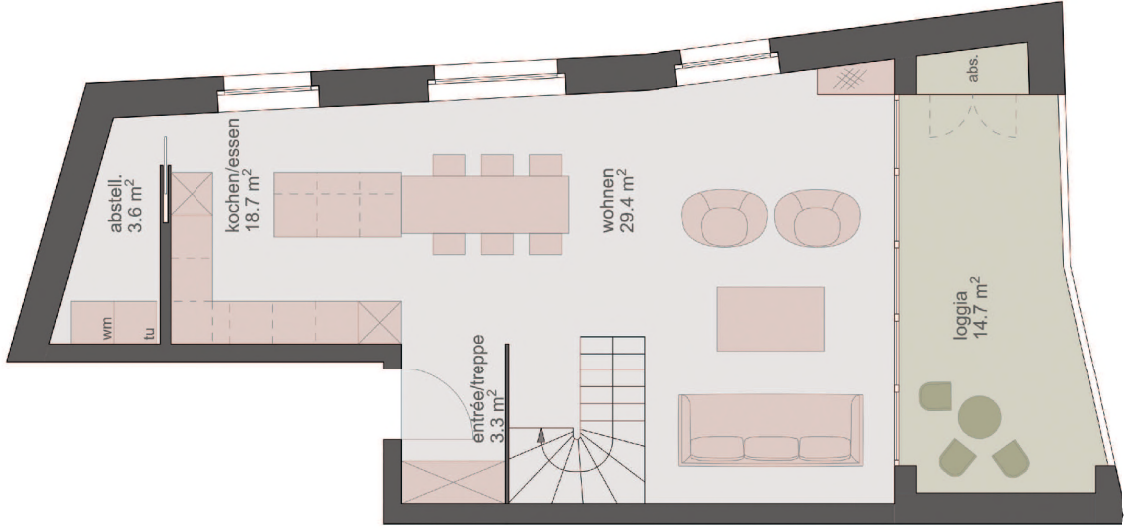
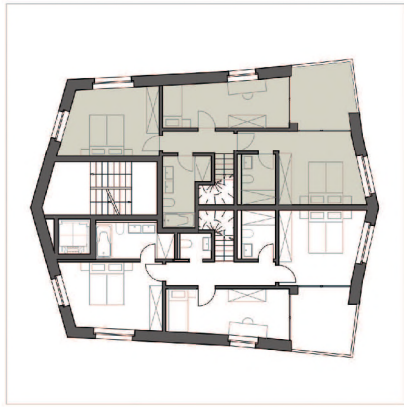
BALKON: 23,4 M²



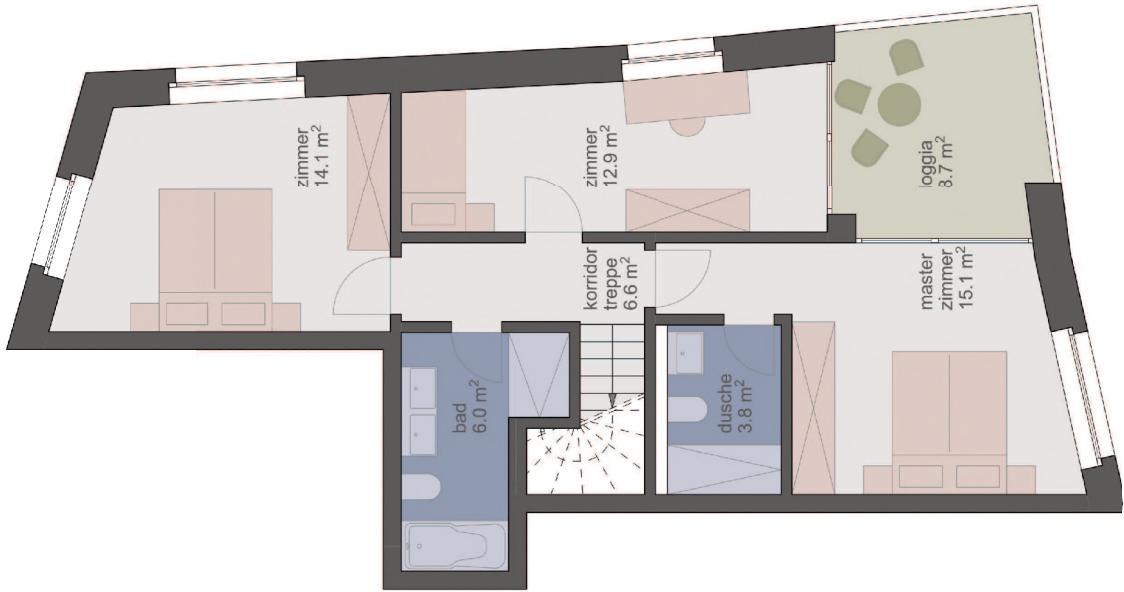
WOHNUNG 3 - 4 1/2-ZIMMER-WOHNUNG 1. & 2. OBERGESCHOSS

WOHNFLÄCHE (BGF): 126,6 m²

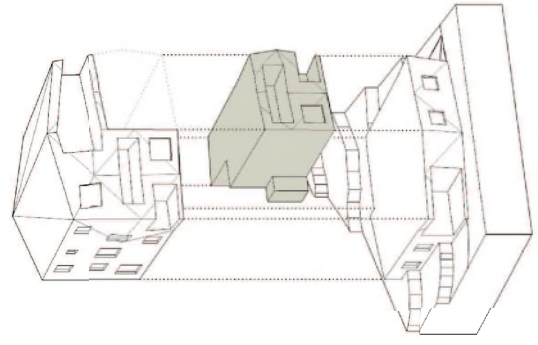
BALKON: 23,4 m²



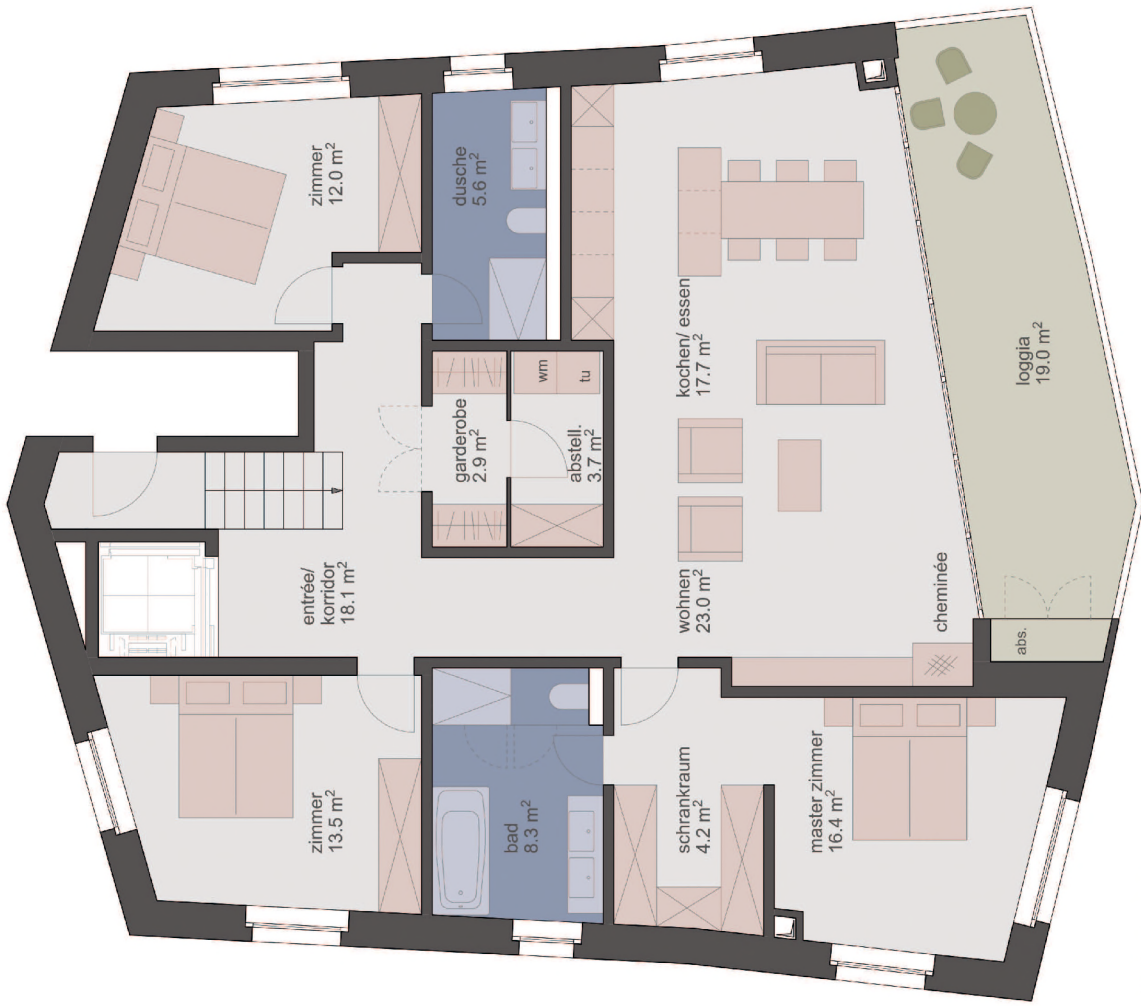
2.obergeschoss



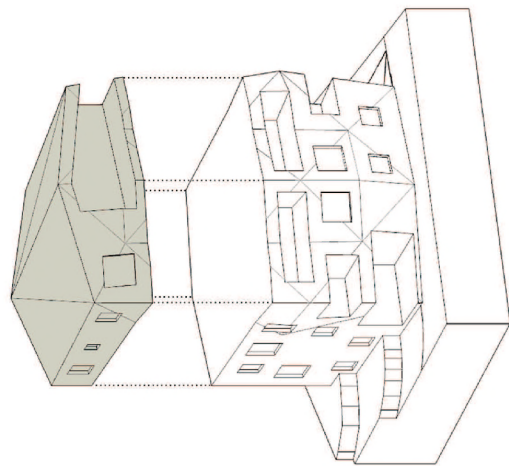
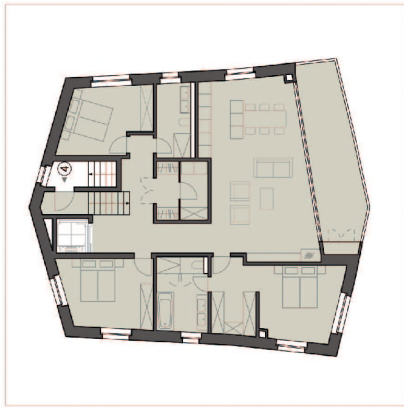
1.obergeschoss



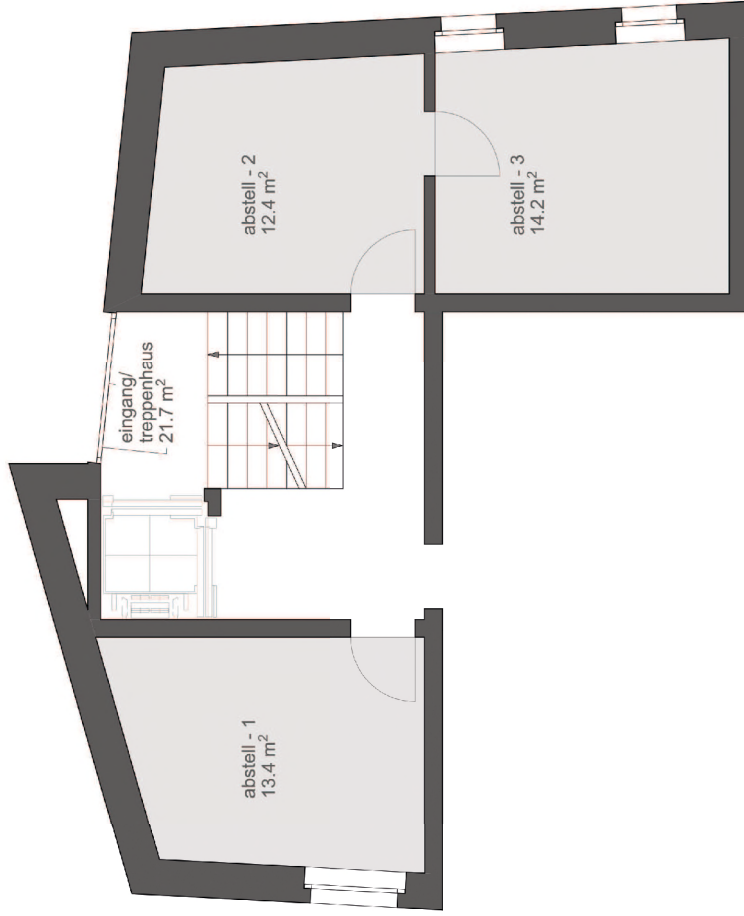
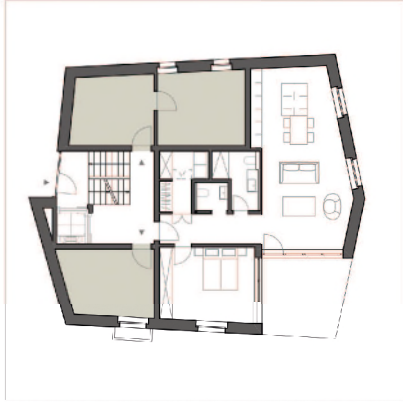
WOHNUNG 4 - 4 1/2-ZIMMER-WOHNUNG DACHGESCHOSS
 WOHNFLÄCHE (BGF): 145,2 m²
 BALKON: 19,0 m²



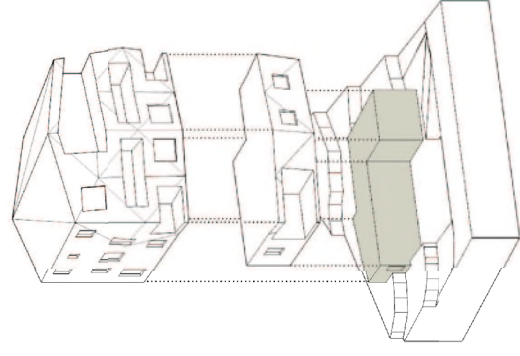
dachgeschoss



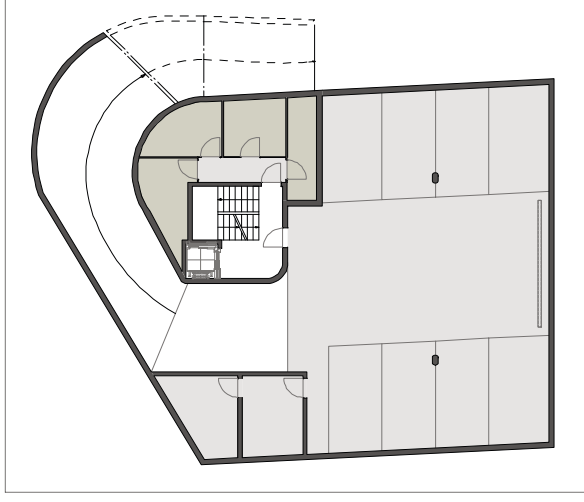
ABSTELLRÄUME ERDGESCHOSS
FLÄCHE (BGF): 48.9 M²



erdgeschoss

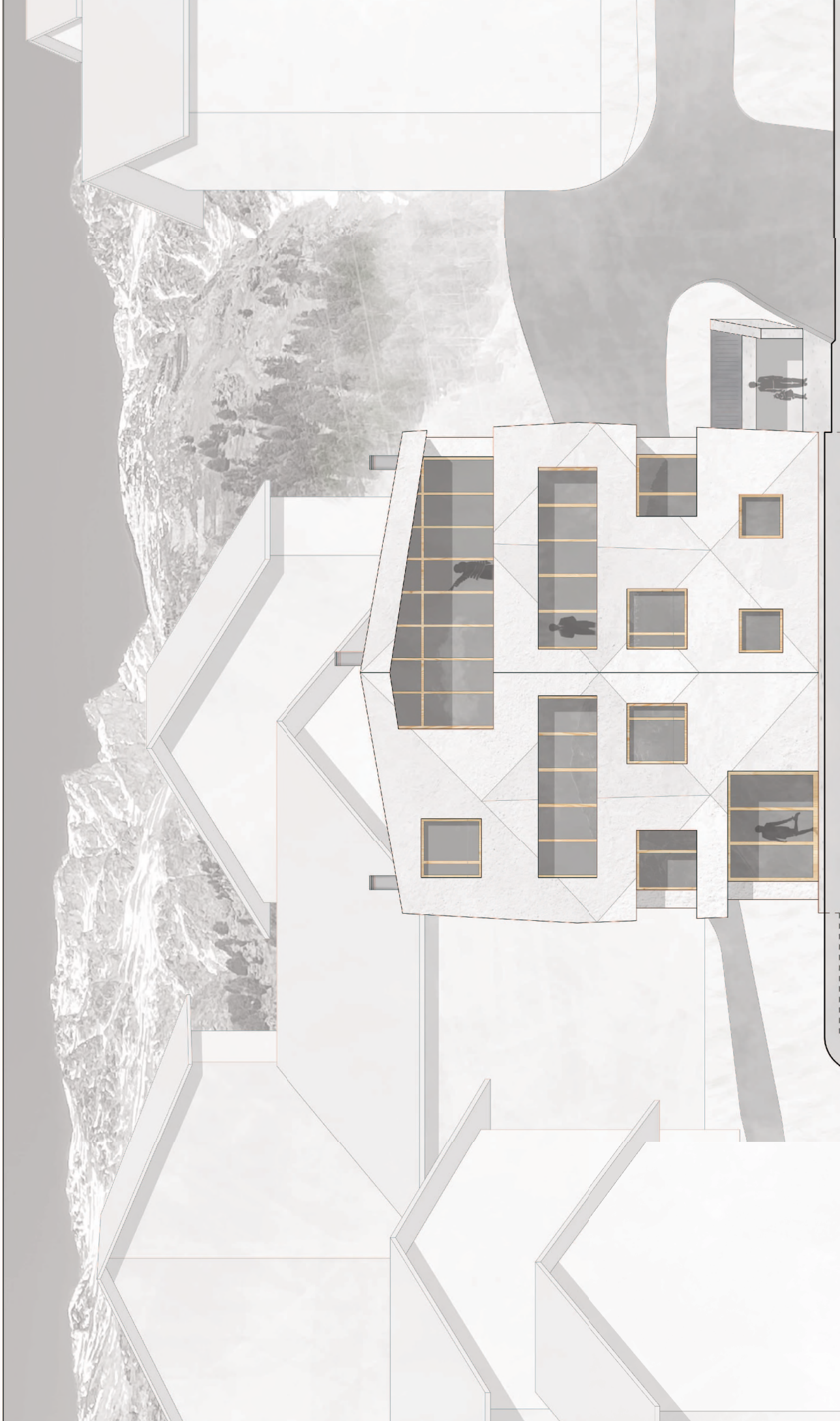


TIEFGARAGE / KELLER - UNTERGESCHOSS
 KELLERFLÄCHE (BGF): 40.6 M²



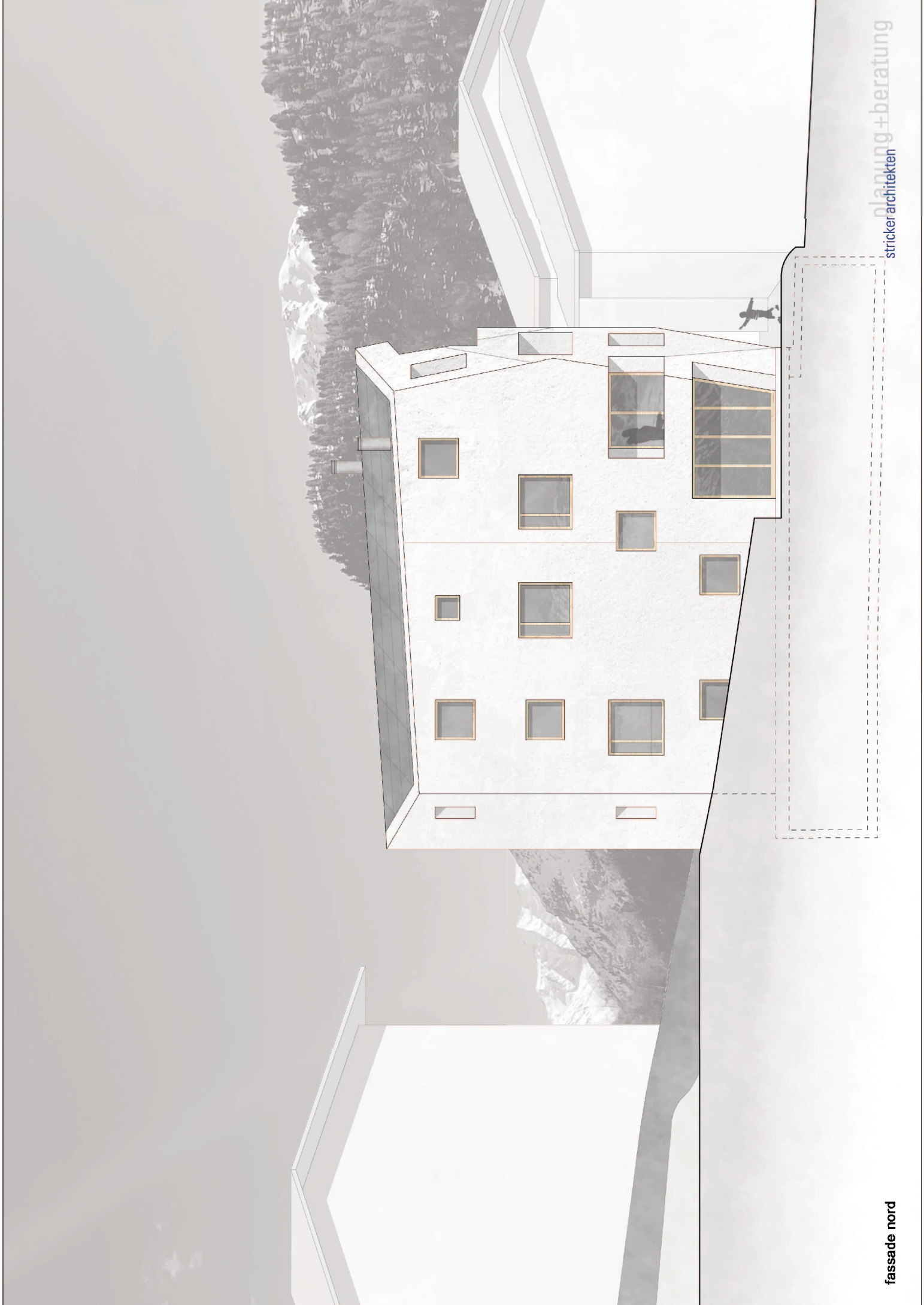
untergeschoss





fassade west

planung + beratung
stricker architekten





fassade ost

planung + beratung
stricker architekten

