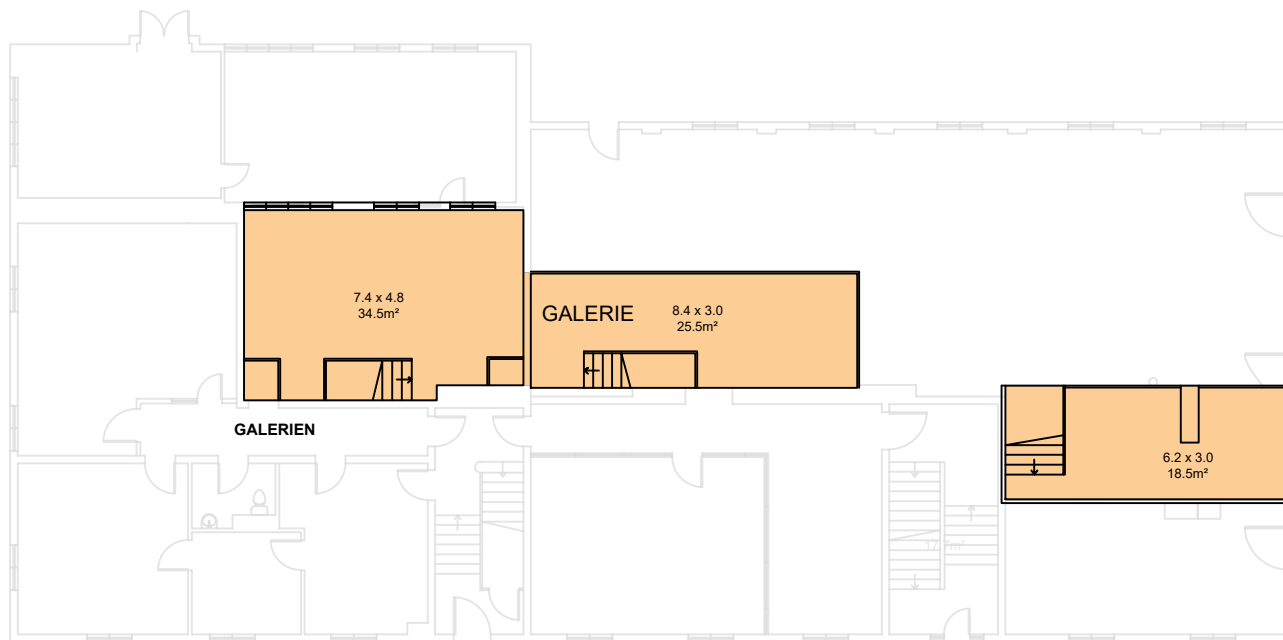
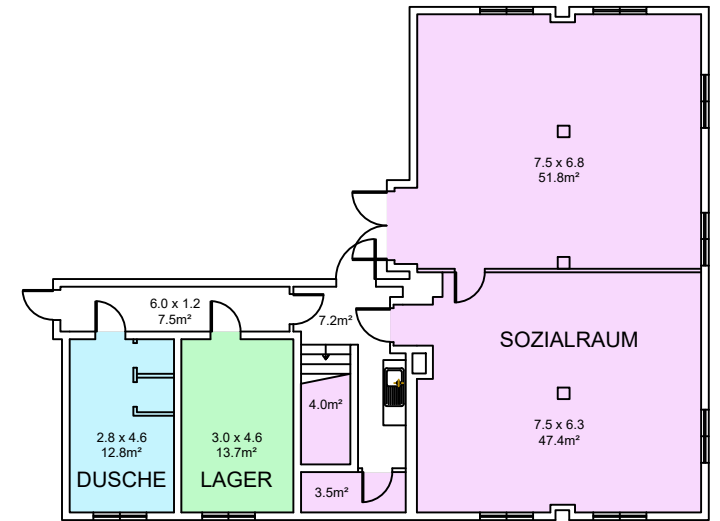
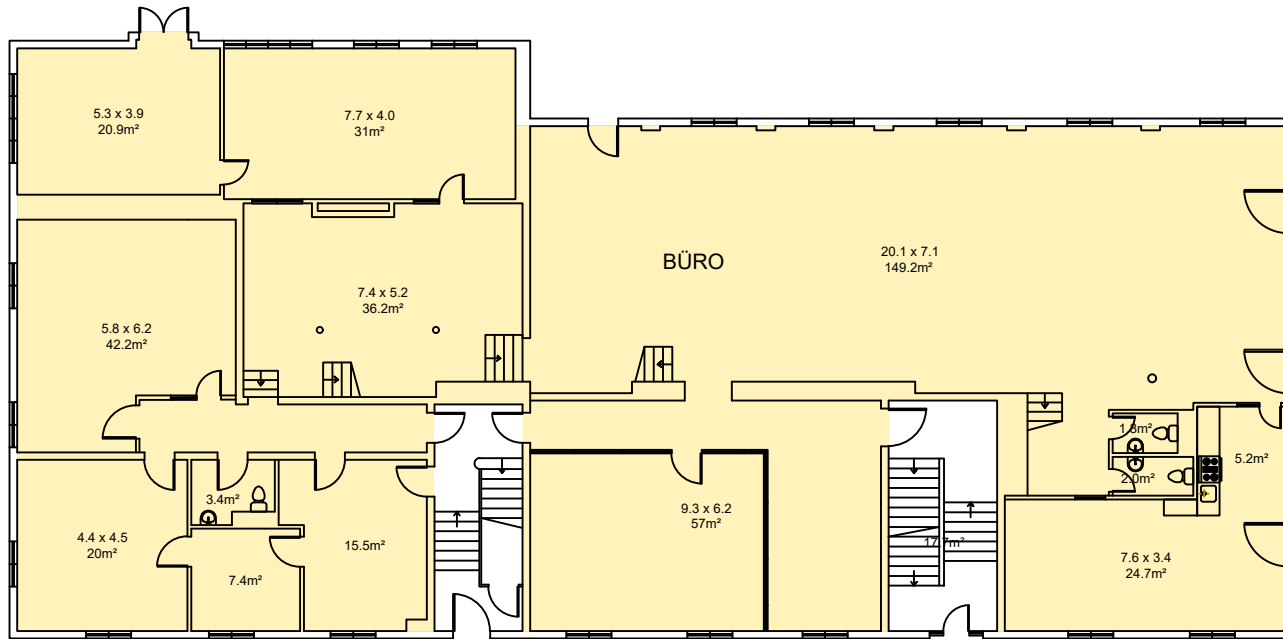


# Konsumstrasse 20/20A, Bern



- Büro EG - 416.3m<sup>2</sup>
- Galerie EG - 78.5m<sup>2</sup>
- Sozialraum UG - 106.7m<sup>2</sup>
- Lager UG - 13.7m<sup>2</sup>
- Dusche UG - 12.8m<sup>2</sup>