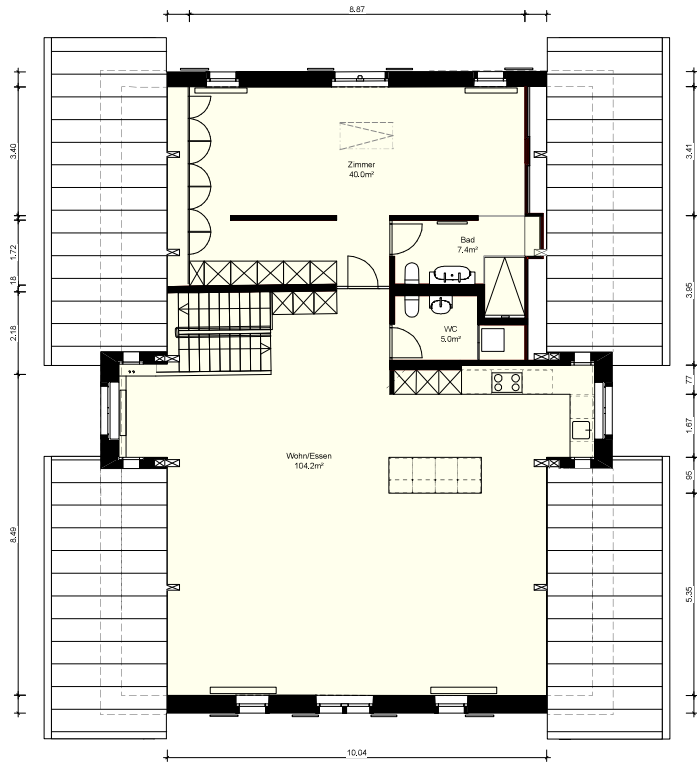
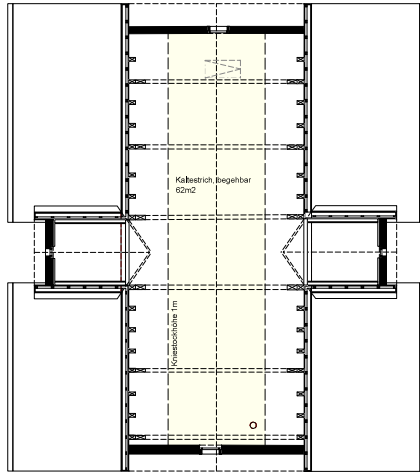


# HORN 2156

Seestrasse 409  
8706 Meilen



DG - DACHWOHNUNG



Kehlboden - Estrich



BAUMBERGER  
WASSERMANN

Baumberger Wassermann AG  
Architekt ETH FH SA  
Brandschenkestr. 43 | 8002 Zürich  
+41 44 400 11 55 | info@bw-p.ch

## Dachwohnung

PlanNr  
**101.02.3**

M. 1:100      Dat. 05.09.23  
Gez.            Rev. 06.12.23  
DINA3