

BALKON

ELTERN
BF = 18.91
FF = 2.46

BAD / WC
BF = 12.75
FF = 1.55

KIND
BF = 12.47
FF = 2.46

KIND
BF = 12.00
FF = 1.2

KIND
BF = 14.48
FF = 1.45

DACHFENSTER
1.00/80

+2.65
+2.60

+2.70
+2.60

+1.35
+1.29

A

A

STU.+2.09
FE. BR.+0.82

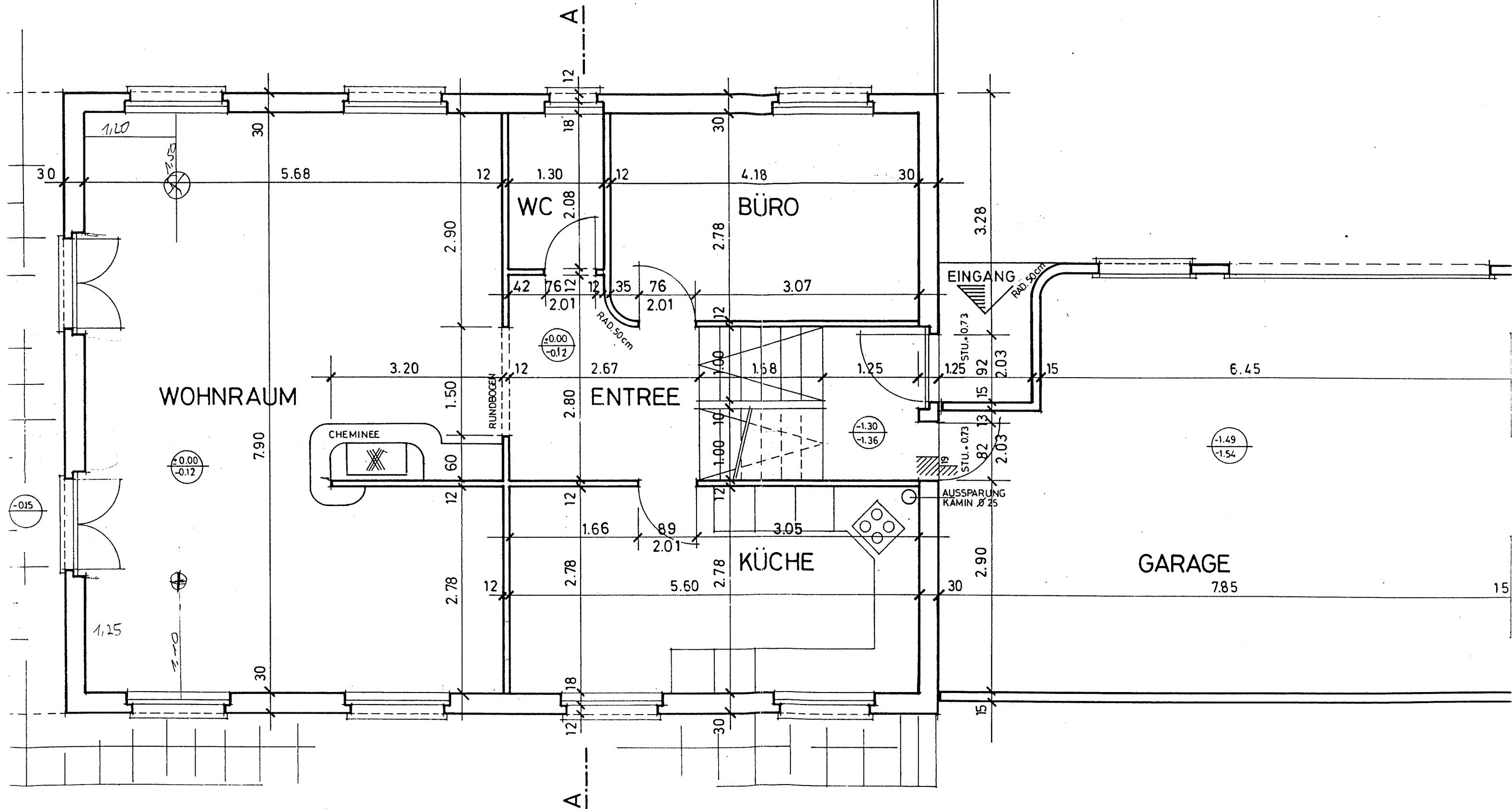
STU.+2.09
FE. BR.+0.82

STU.+2.09
FE. BR.+1.27

STU.+2.09
FE. BR.+0.82

STU.+0.63
FE. BR.+0.01

STU.+0.63



STU.+2.09
FE. BR.+0.082

STU.+2.09
FE. BR.+0.82

STU.+2.09
FE. BR.+0.82

STU.+2.09
FE. BR.+1.27

90

1.24

1.75

1.24

1.75

1.24

1.74

1.24

90

8.00

BR-1.21
STU-0.61

KS Ø 80
D = -2.10
S = -3.15

BR-1.21
STU-0.61

STU-0.61

SS-Ø 60
E = -3.00
A = -3.05
D = -2.70
B = -3.70

BR.FE-142
STU. - 0.61

HOF S
D = -1.
A = -1.
B = -2

PVC Ø 150 GEF. 15‰
GEF. 1‰

SICKERL. Ø 100
GEF. 1‰

SICKERL. PVC Ø 100
GEF. 1‰

STURZGEF. PVC Ø 100

KELLER NATURB.
BF = 16.56
FF = 0.48

ABSTELLR.
BF = 15.01 / FF = 0.48

BASTELR.
BF = 15.48 / FF = 1.5

KRAGPLATTE
2.00/1.40/0.18

SCHUTZR.
BF = 8.08
FF = 0.48

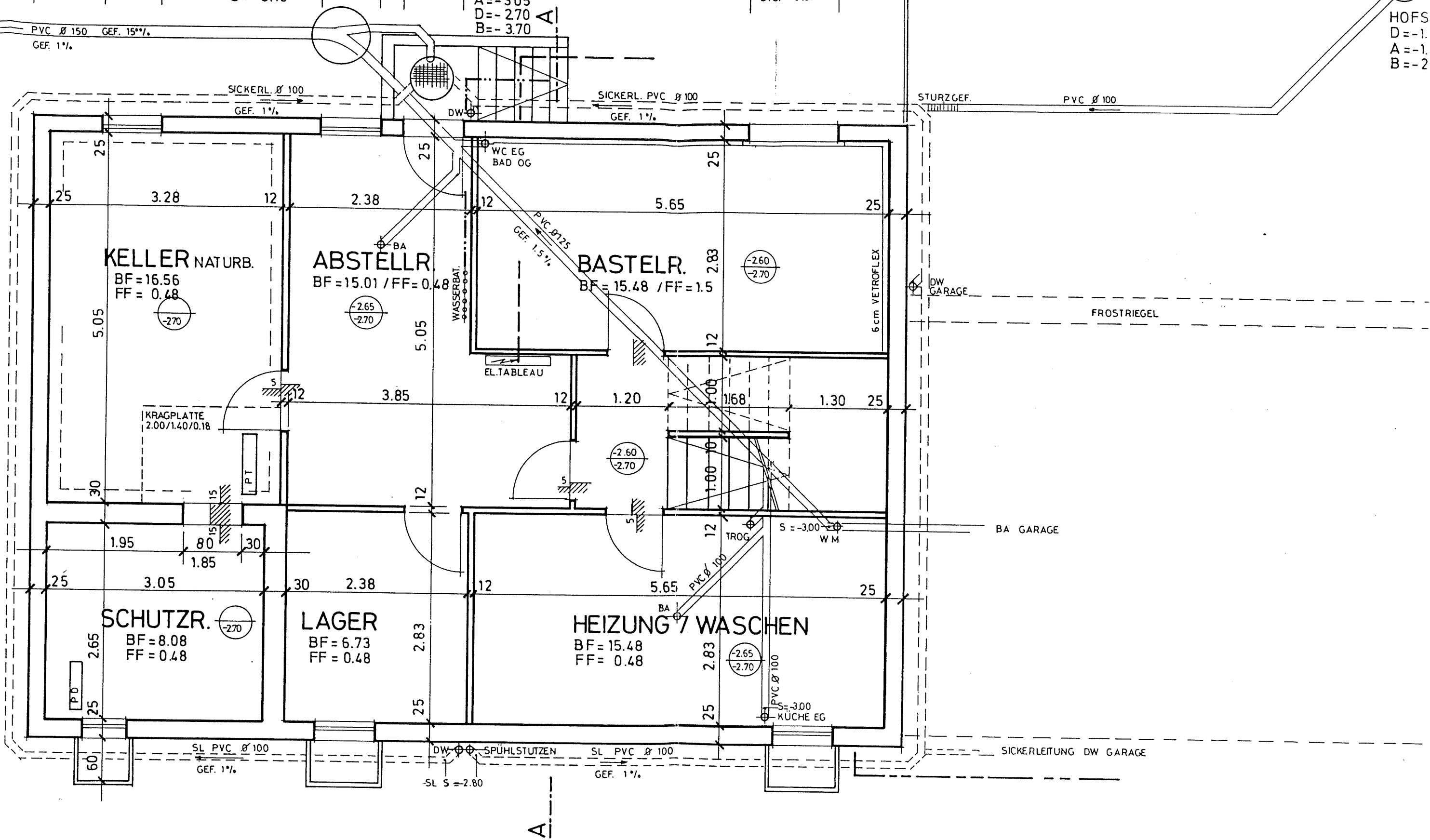
LAGER
BF = 6.73
FF = 0.48

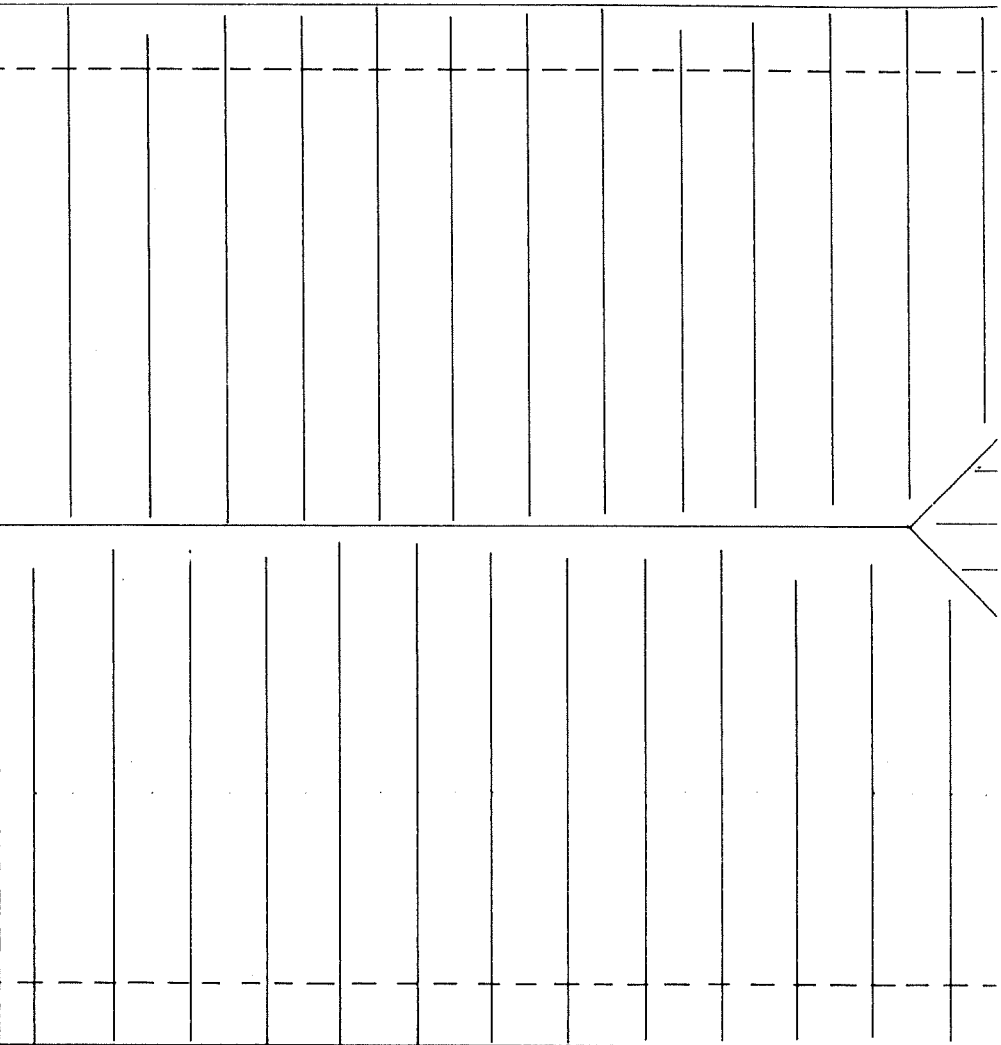
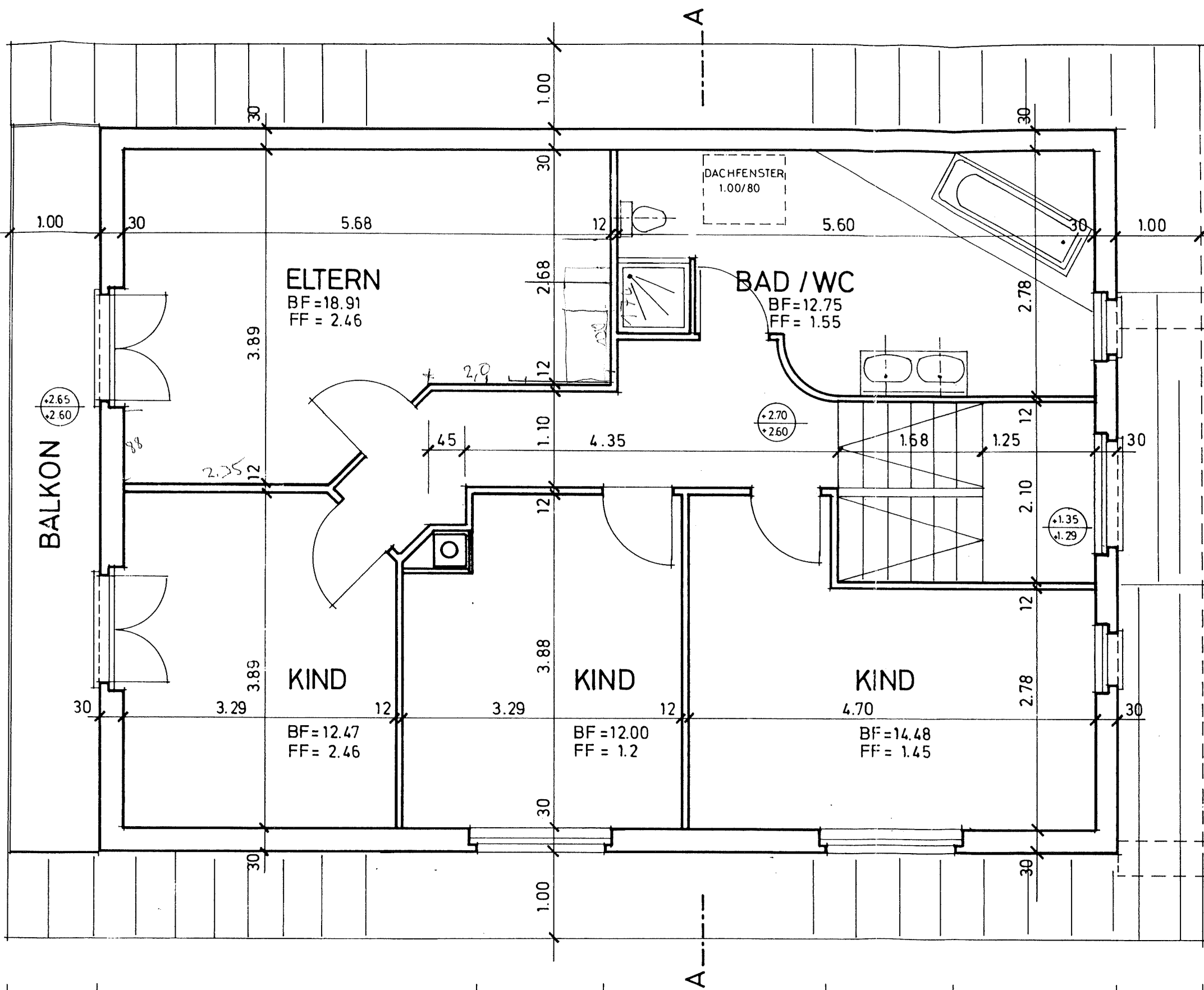
HEIZUNG 7 WASCHEN
BF = 15.48
FF = 0.48

BR-1.70
STU-0.90

BR-1.10
STU-0.50

BR-1.10
STU-0.50





A

A