

Soppalco
24,3 m²

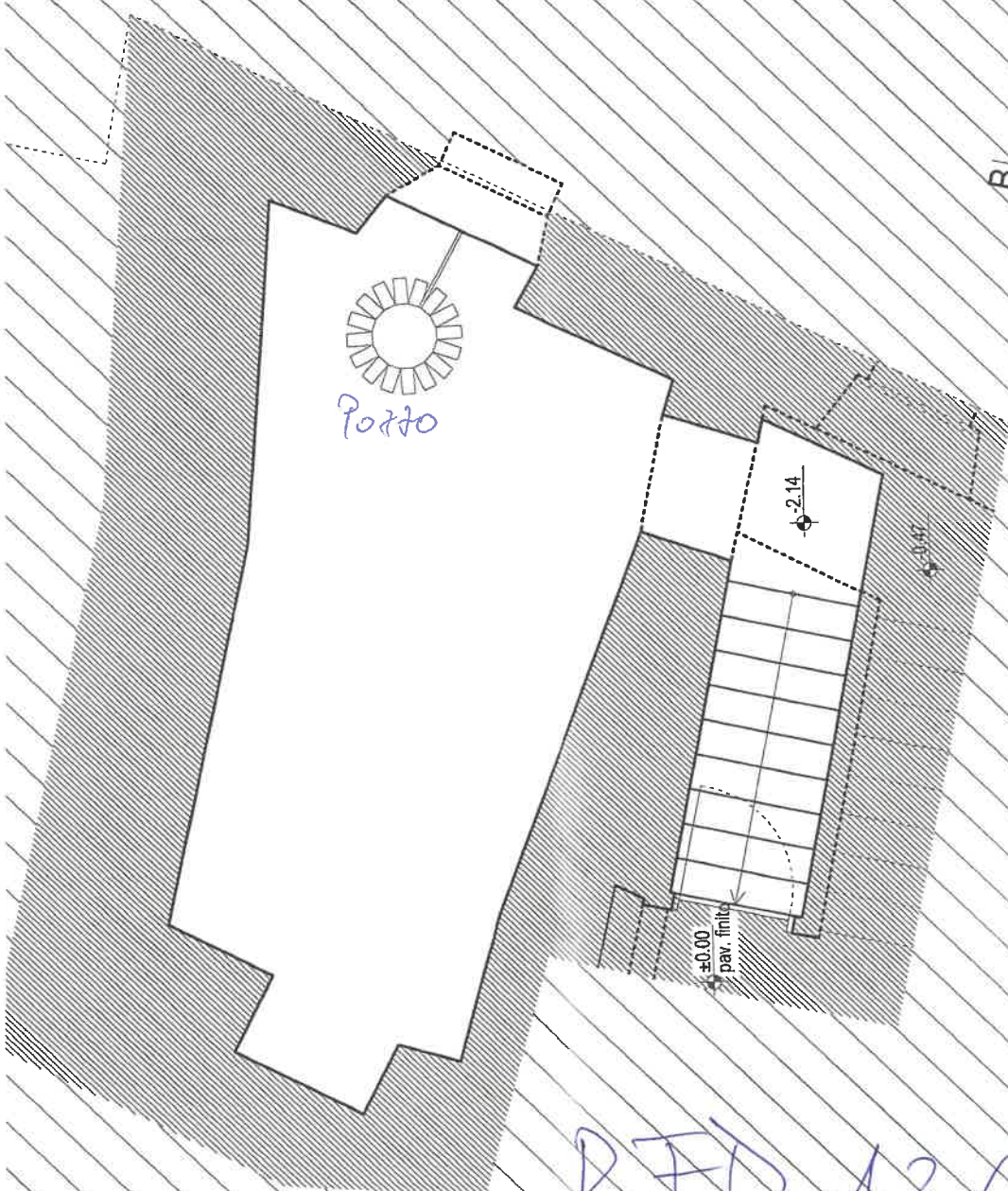
Doccia
4,2 m²

Studio
14,5 m²

RFD 126
MANSARDA

B'

A'



RFD 126
CANTINA

B/A

✦ +0.70
Autorimessa
29 m²

RAD 126
A.T.C.

✦ +0.26
Locale tecnico
10 m²

Atrio d'entrata
18 m²
✦ +0.21

ENTRATA

WC
2.7 m²

✦ ±0.00
pav. finito

✦ +1.54

✦ ±0.00
pav. finito

Disponibile
13.5 m²

2 PORTA

Corte

B

A

✦ +0.03

✦ ±0.00

✦ +0.02

✦ -0.05

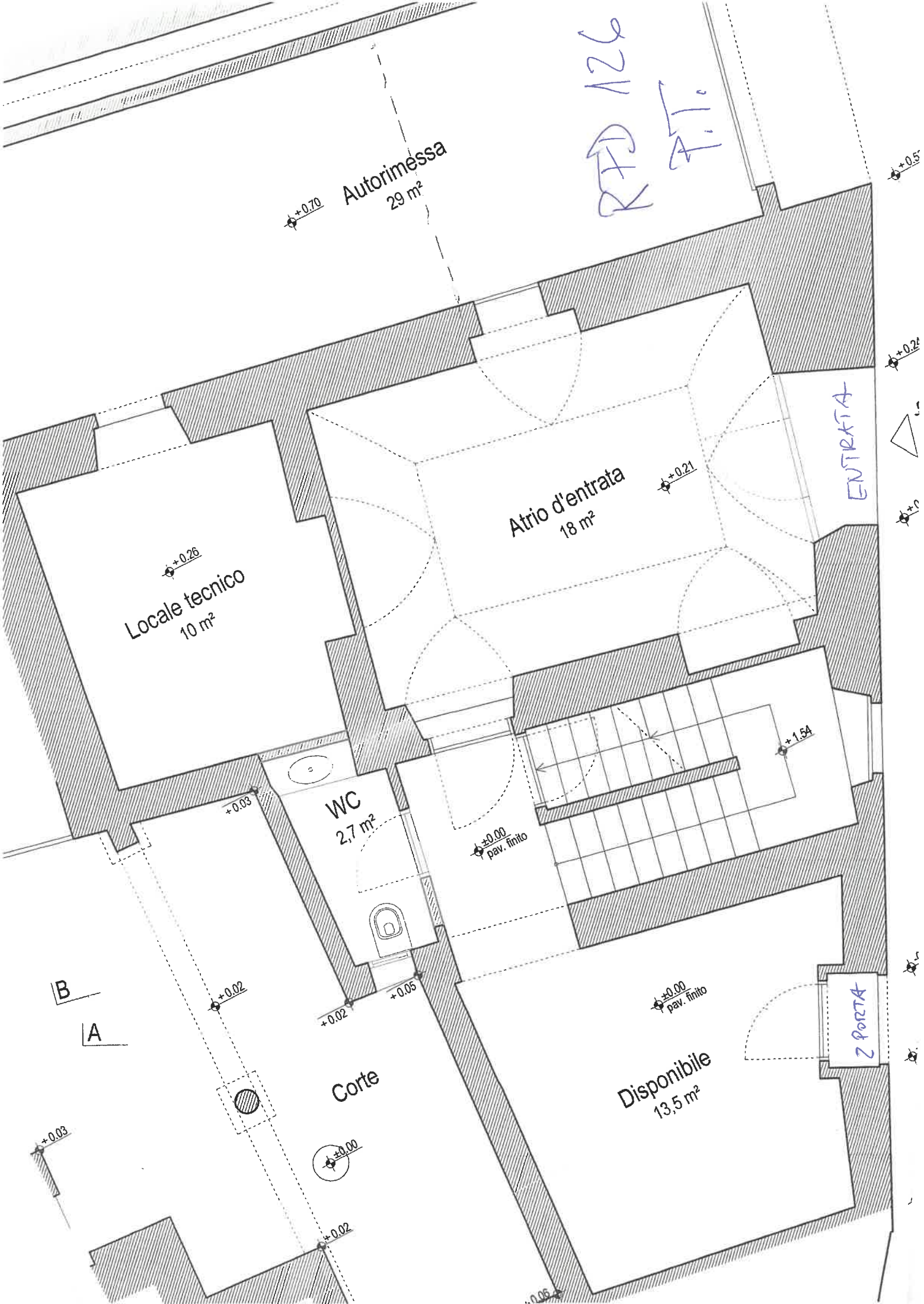
✦ +0.5

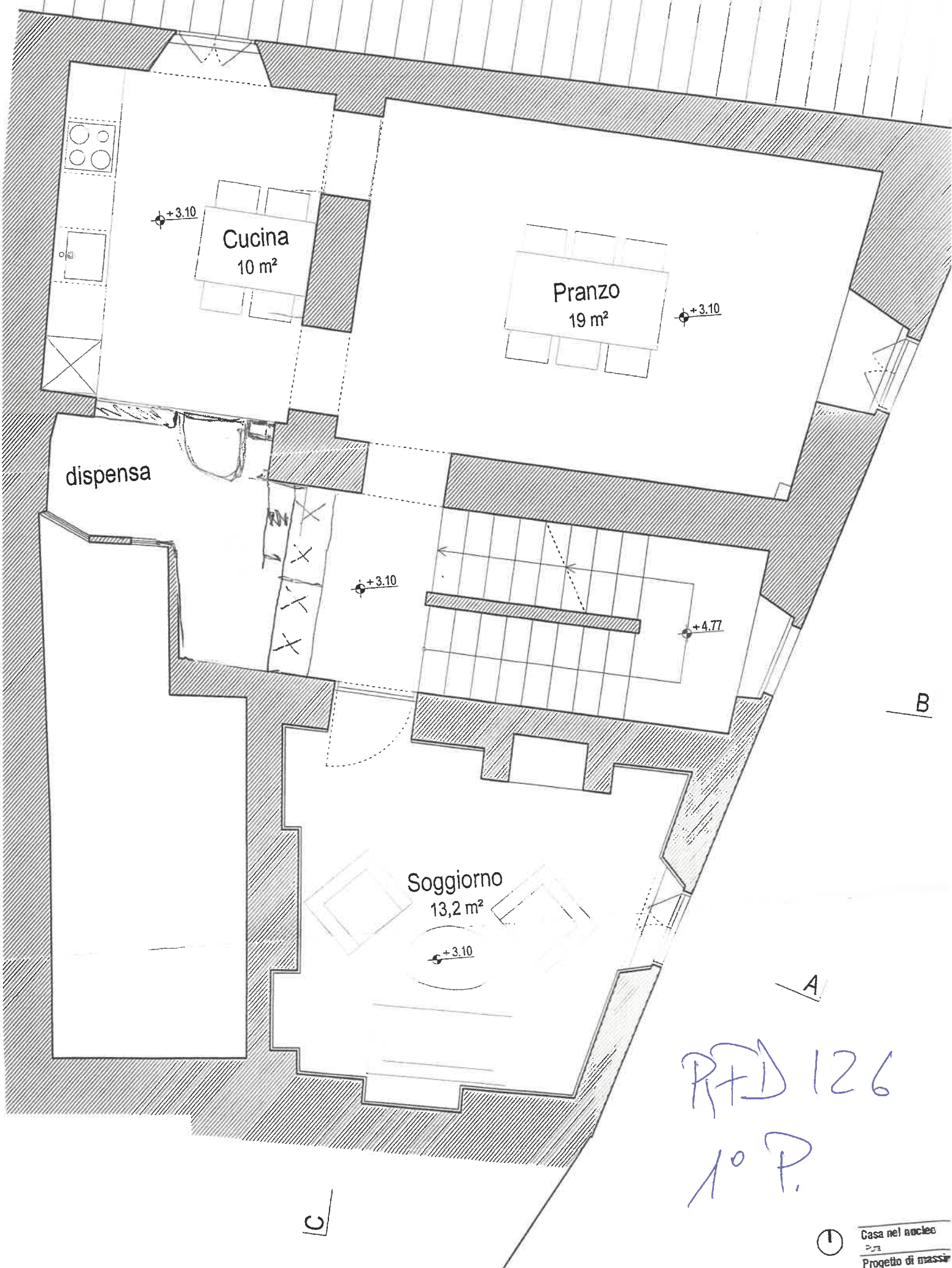
✦ +0.2

✦ +0

✦ +0

✦ +0



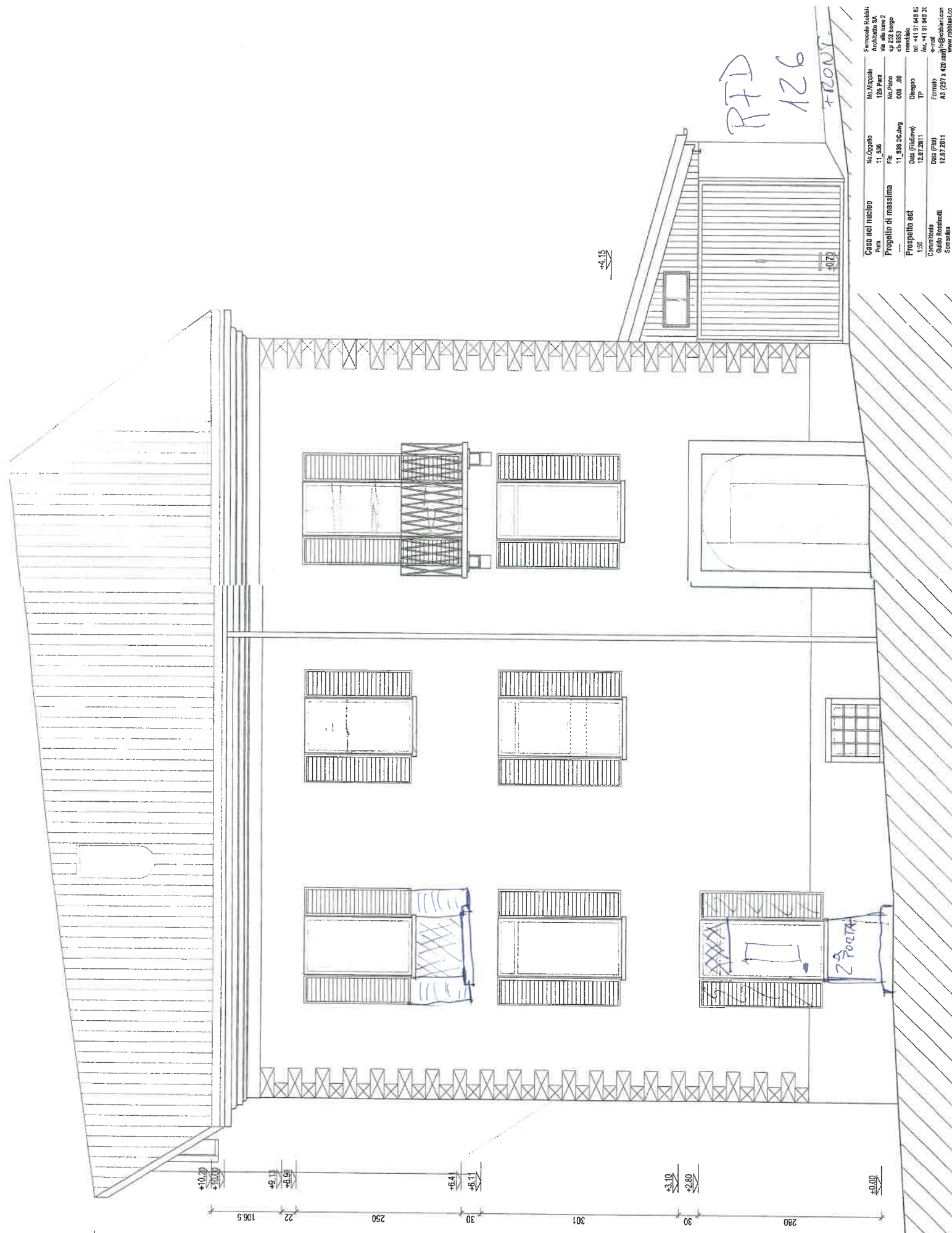


R+D 126
1° P.

2°D
R+D 126

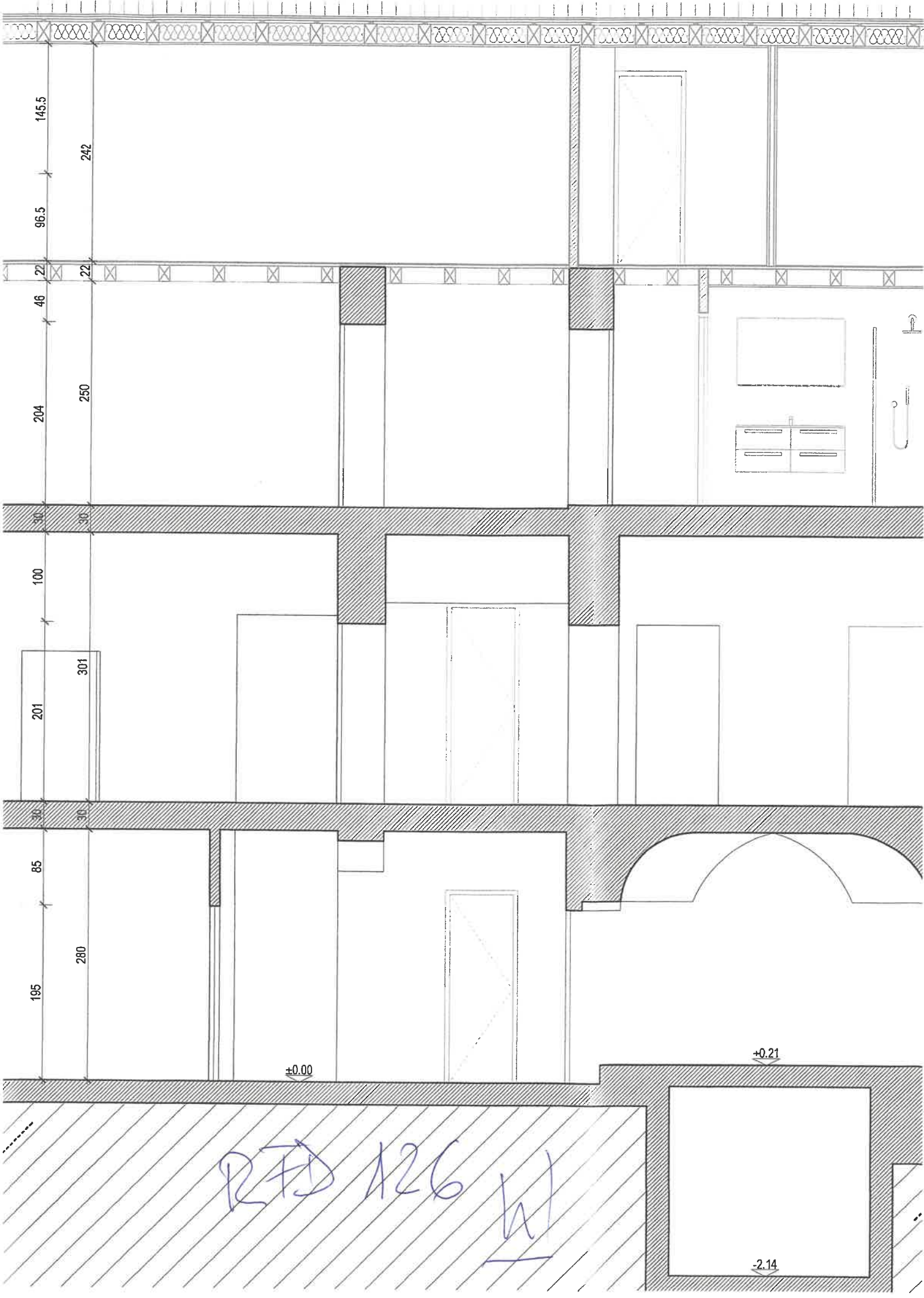


3
A



Casa nel nucleo	No. Appalto	No. Appalto	No. Appalto	No. Appalto
Pura	11.836	126 Pura	126 Pura	126 Pura
Progetto di massima	File	No. Piano	op. 252 borgo	ch. 8883
.....	11.838 DC.dwg	008 .00	008 .00	008 .00
Prospetto est	Dis. (1/80) 1-50	Disegno	TP	TP
Completata	Data (P.00)	Formato	AS (257 x 426 mm)	www.robblancco
Severina	12.07.2011	AS (257 x 426 mm)		

Farmelo Robbia
 Aciliano VA
 viale della Repubblica 2
 tel. +41 91 648 32
 fax. +41 91 648 33
 www.robblancco



RTD 126 W

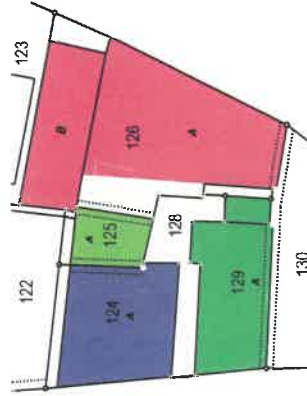
COMUNE DI PURA

1:500

Particelle no 124 - 125 - 126 - 128 - 129

PIANO TERRENO

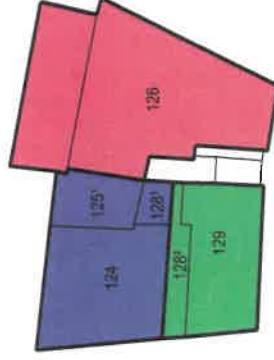
(Situazione catastale)



PRIMO PIANO

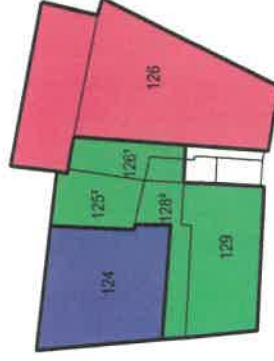
Particella 124 : *Diritto di sporgenza (125', 128' p. abitazione al 1° piano) a carico particelle 125 e 128*

Particella 129 : *Diritto di sporgenza (128° p. abitazione al 1° piano, 2° piano, solaio e tetto) a carico particella 128*



SECONDO PIANO

Particella 129 : *Diritto di sporgenza (125°, 126' p. abitazione al 2° piano, Solaio e tetto) a carico particelle 125 e 126*



PIANO SOLAIO e TETTO

