

TOTALE SUPERFICIE EDIFICABILE CASA A SCHIERA 2: 376.52 M2

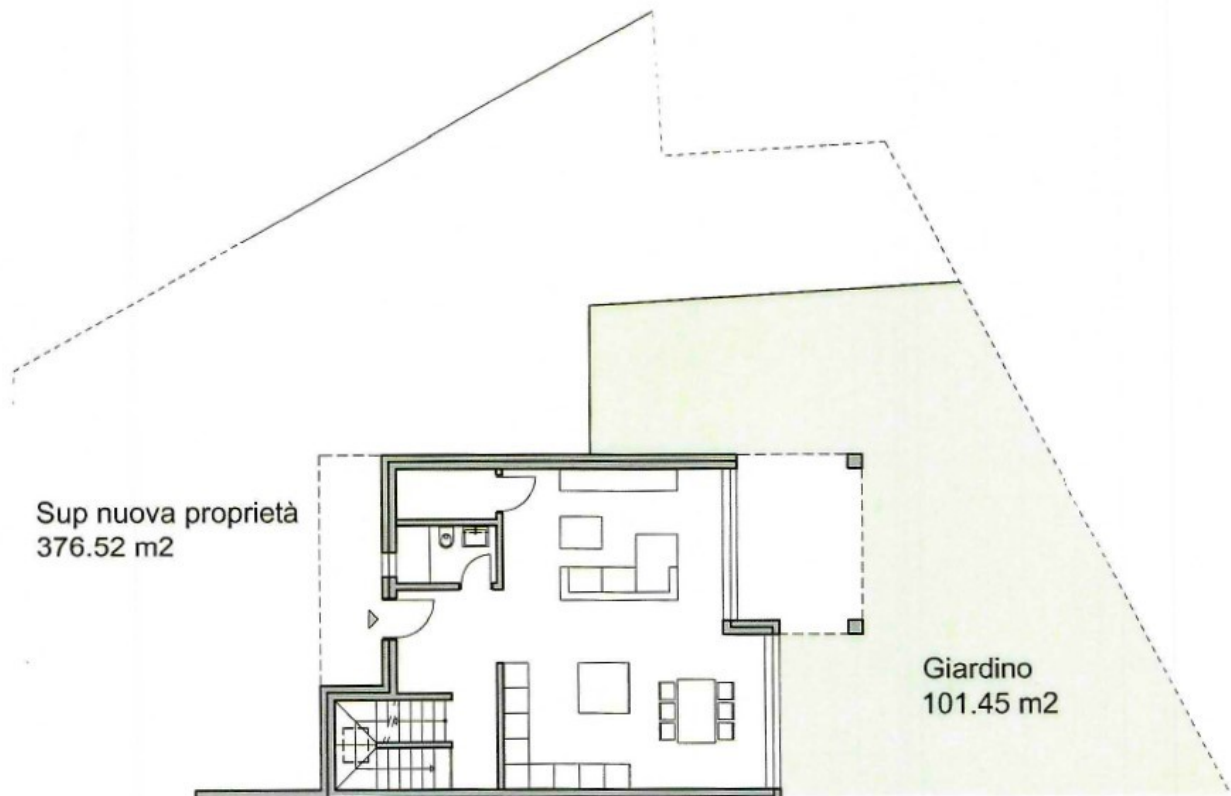
SUPERFICIE VERDE PROGETTO (CALCOLATA AL COMPUTER): 101.45 M2

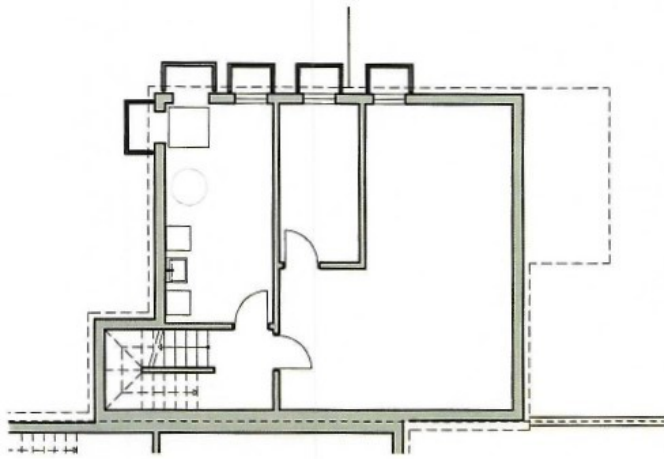
% AREA VERDE PROGETTO:

$$101.45 \text{ M}^2 / 376.52 \text{ M}^2 = \underline{0.269} > 0.30 = \underline{26.9\%} > 30\%$$

METRI QUADRI NECESSARI AL RAGGIUNGIMENTO DEL 30% CONCESSI DALLA CASA A SCHIERA 1

$$376.52 \text{ M}^2 \times 0.30 = 112.956 \text{ M}^2 - 101.45 \text{ M}^2 = \underline{11.506 \text{ M}^2}$$





TOTALE SUPERFICIE EDIFICABILE: 376.52 M²

SUPERFICIE UTILE LORDA:

PIANO CANTINA

0.00 M²

PIANO TERRENO

2.46 M x 1.50 M + 8.50 x 8.04 M + 1.00 x 4.02
=> 76.05 M²

PRIMO PIANO

11.00 M x 8.04 M = 88.04 M²

DEDUZIONI:

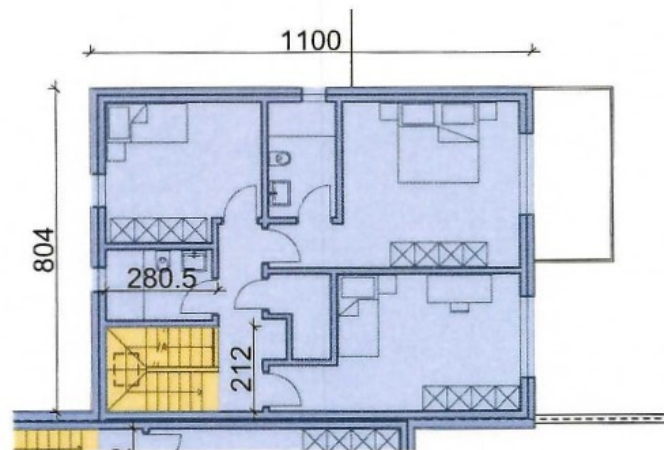
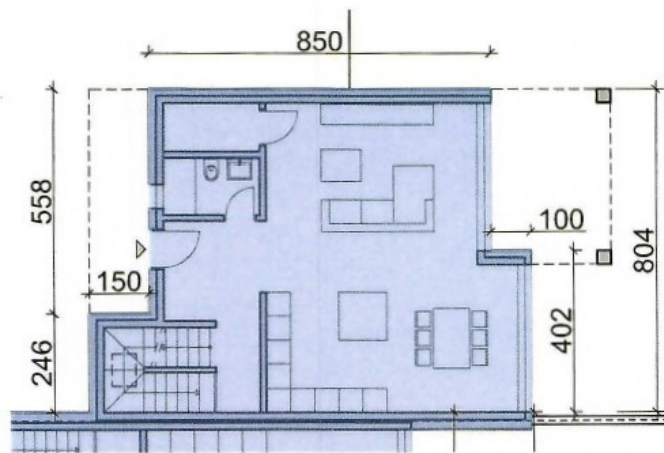
2.805 M x 2.12 M = 5.95 M²

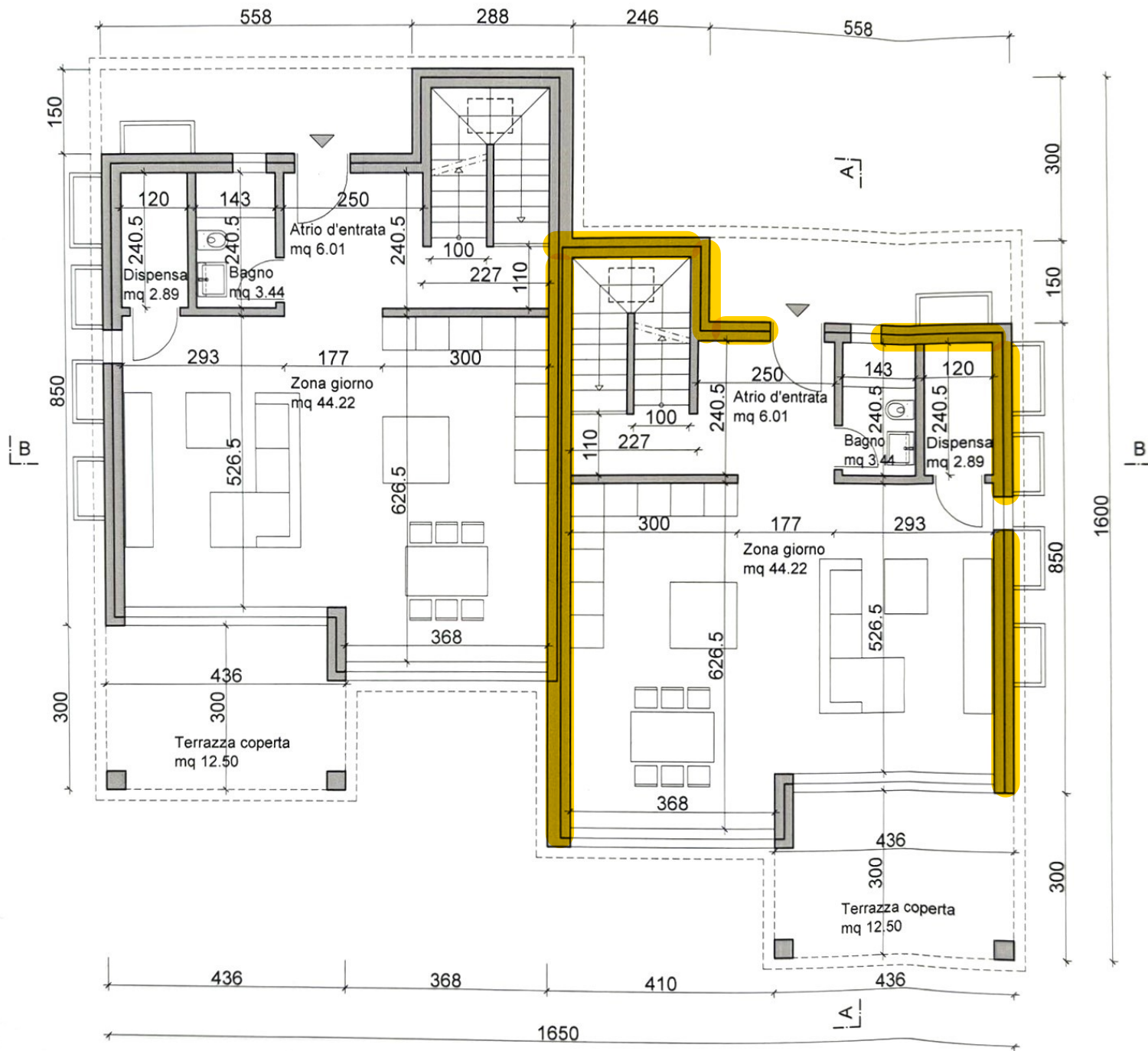
SUL TOTALE PROGETTO:

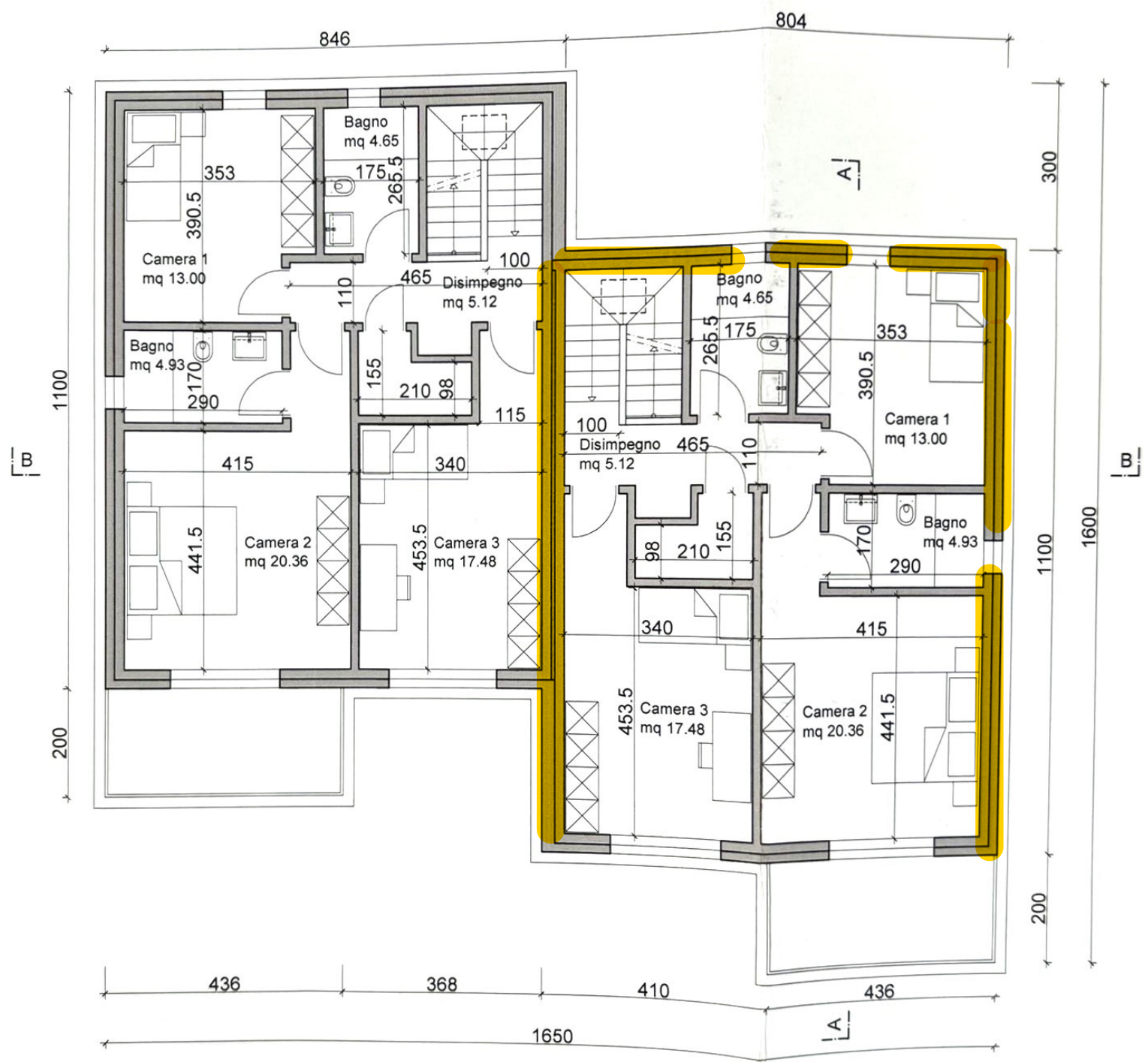
(0.00 + 76.05 + 88.04 - 5.95) M² = 158.14 M²

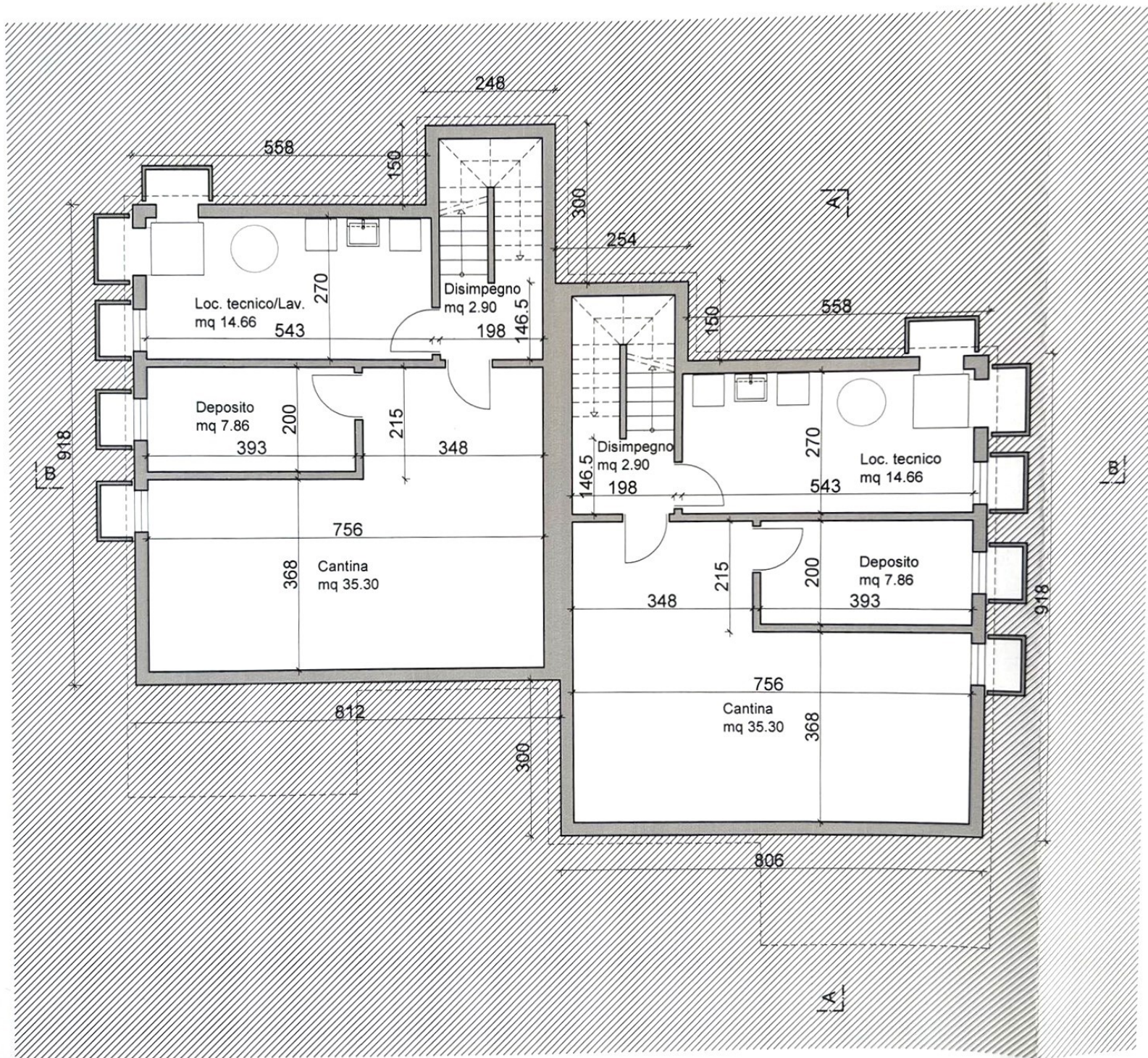
INDICE DI SFRUTTAMENTO PROGETTO:

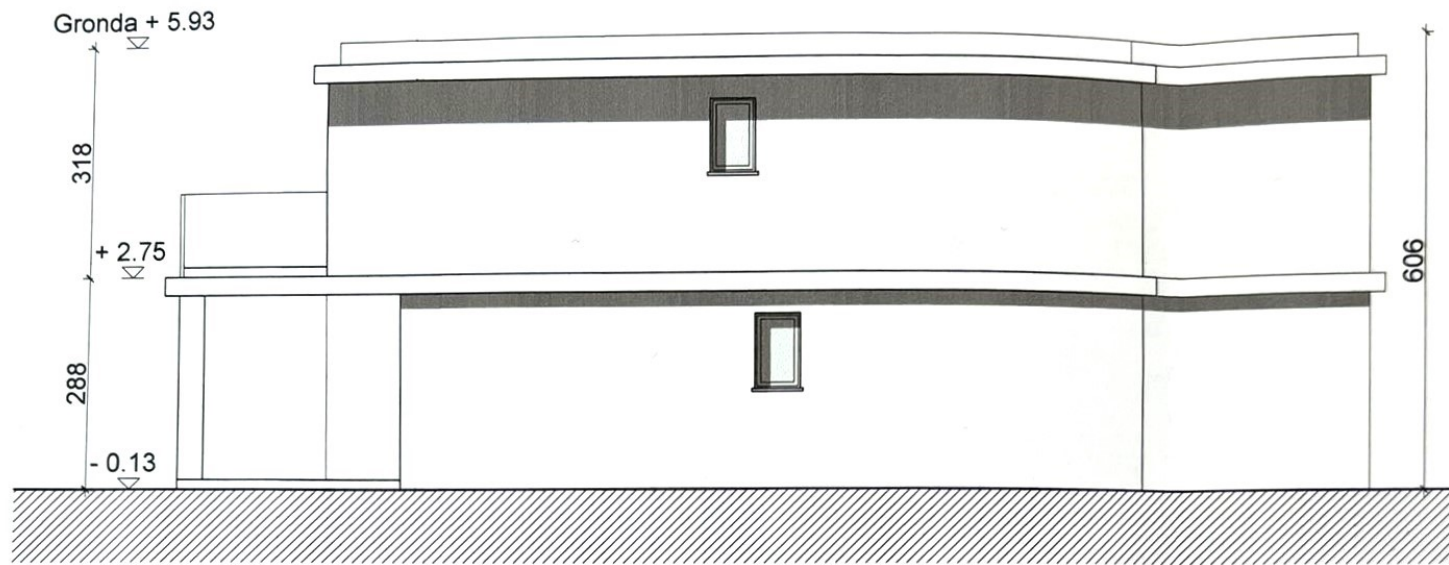
158.14 M² / 376.52 M² = 0.42 < 0.5





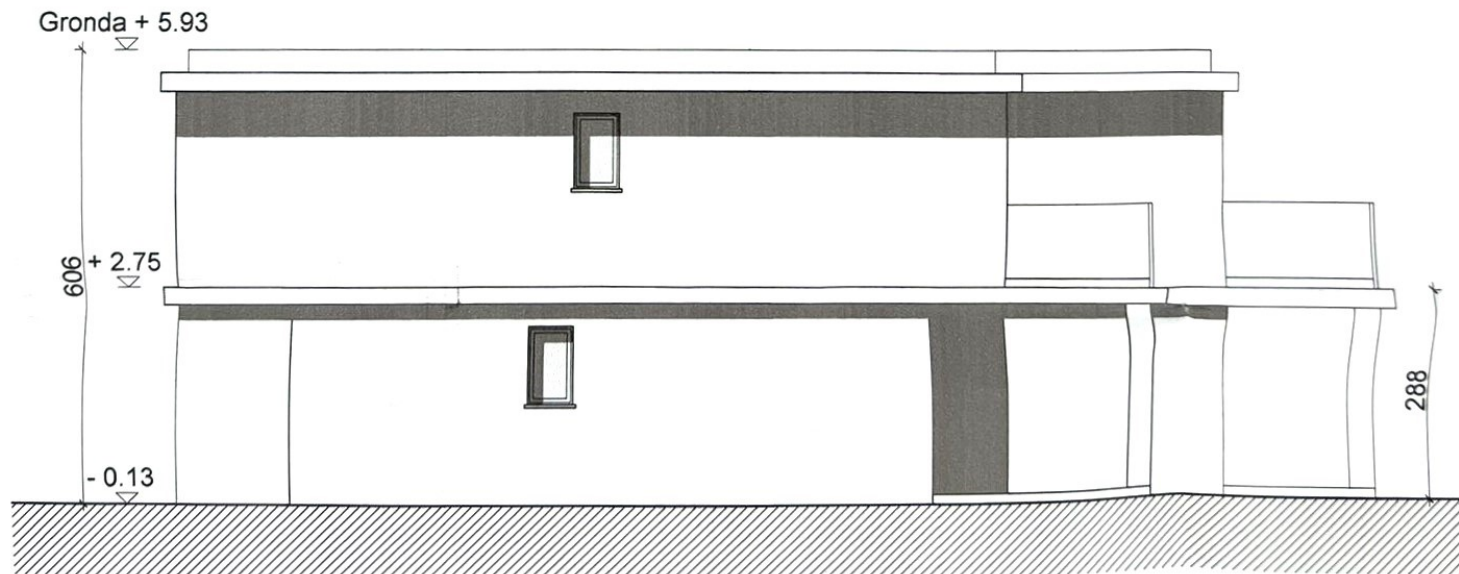






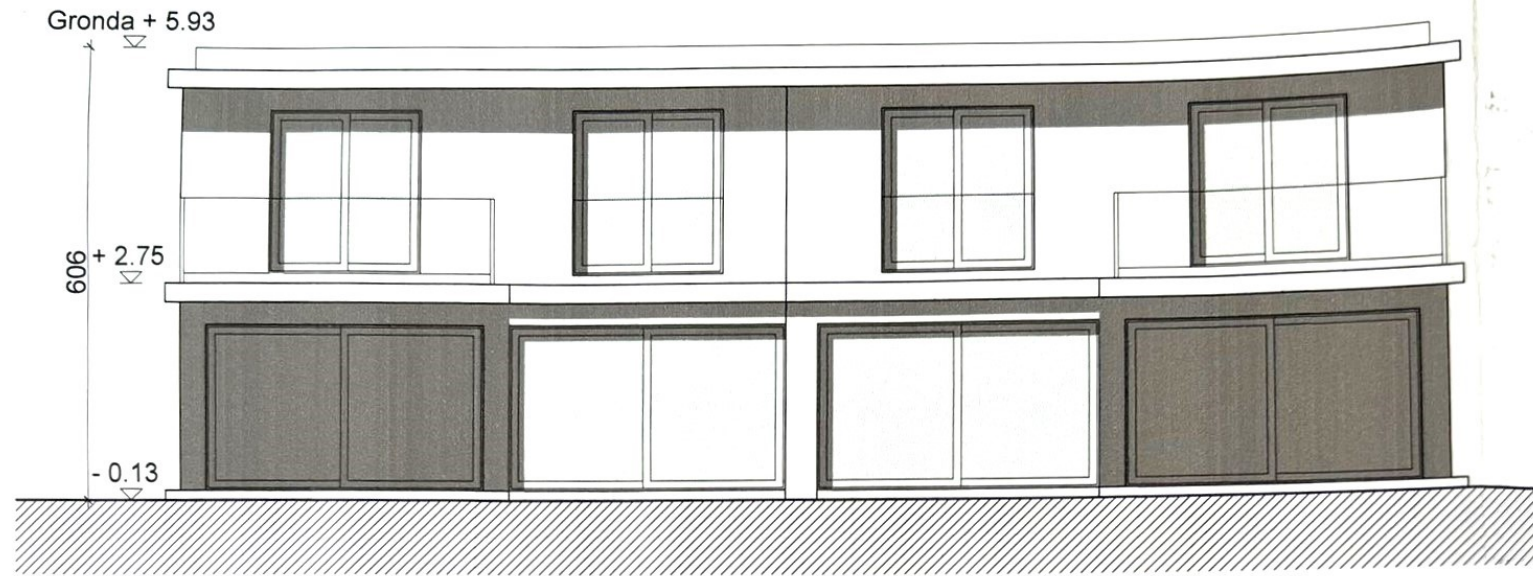
FACCIATA EST

1:100



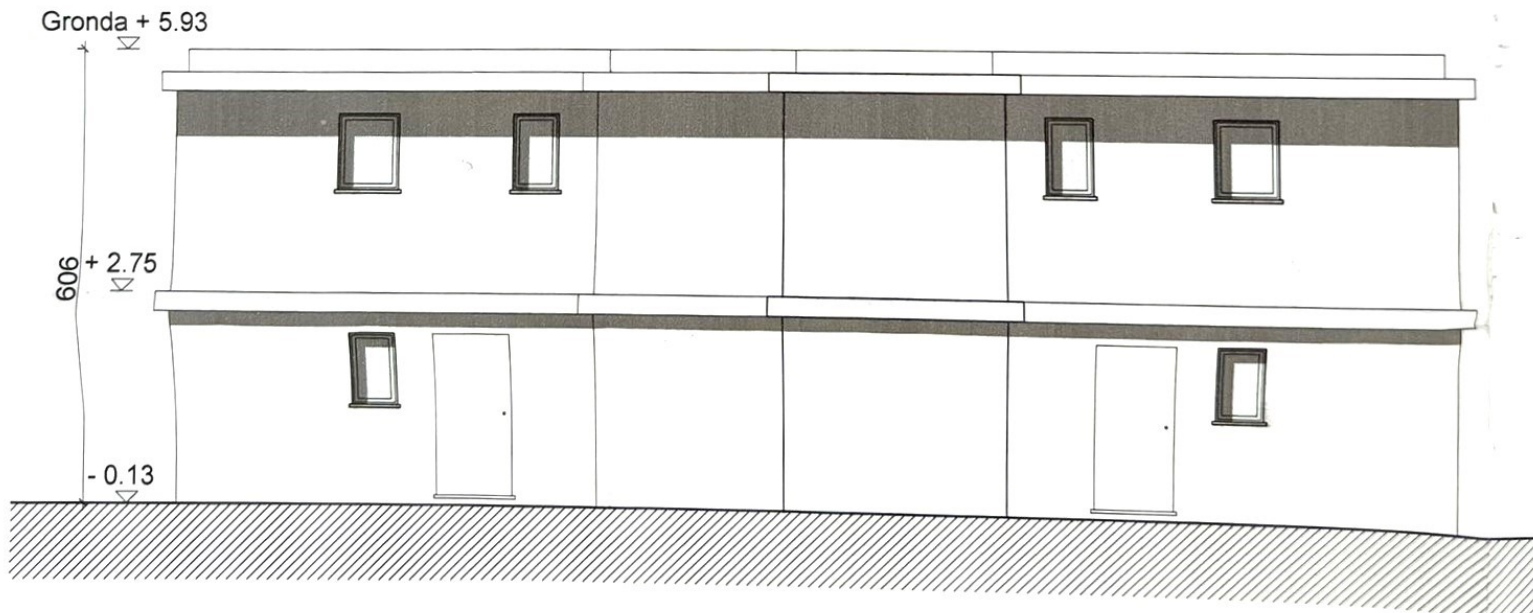
FACCIATA OVEST

1:100



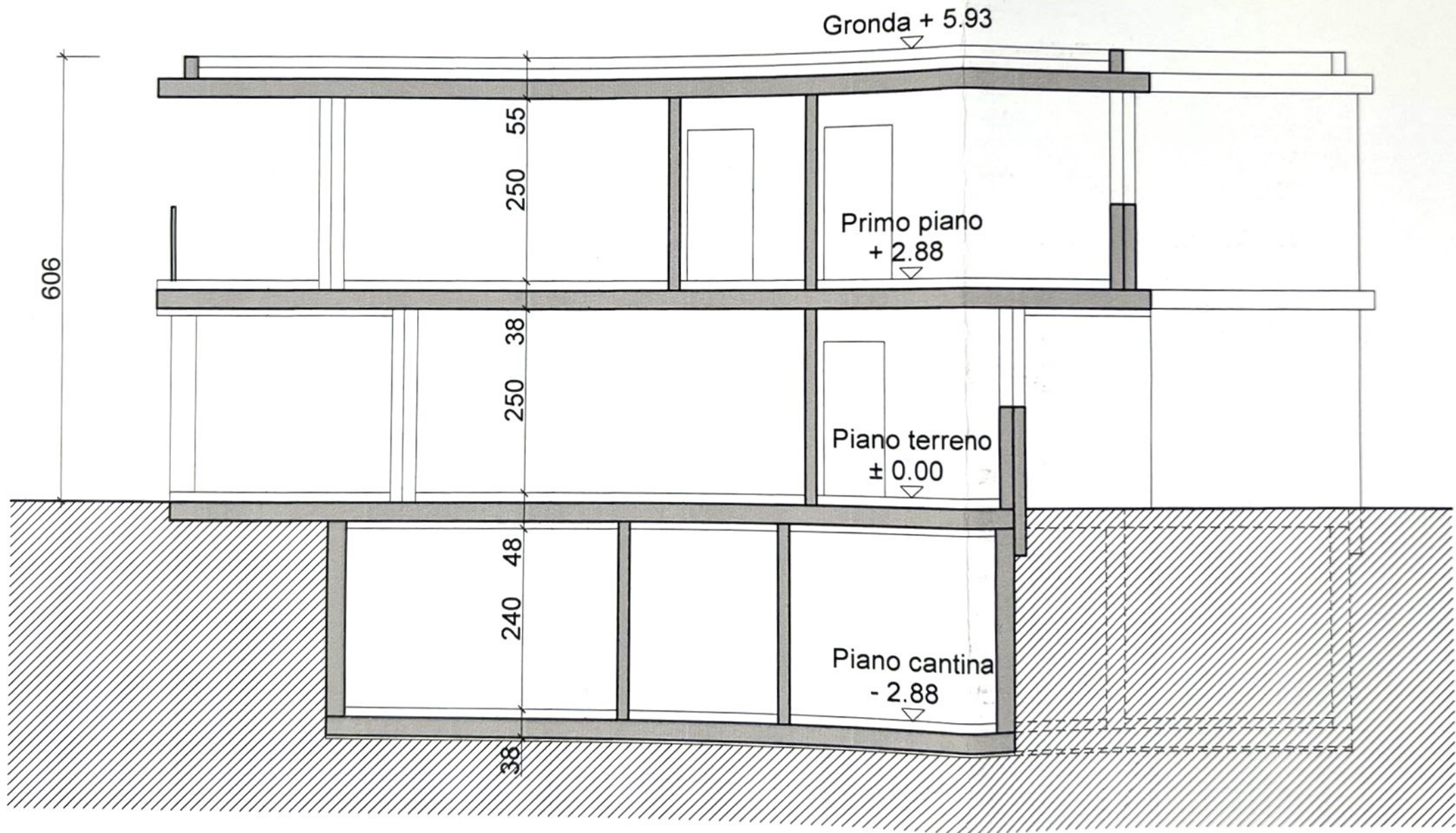
FACCIATA SUD

1:100

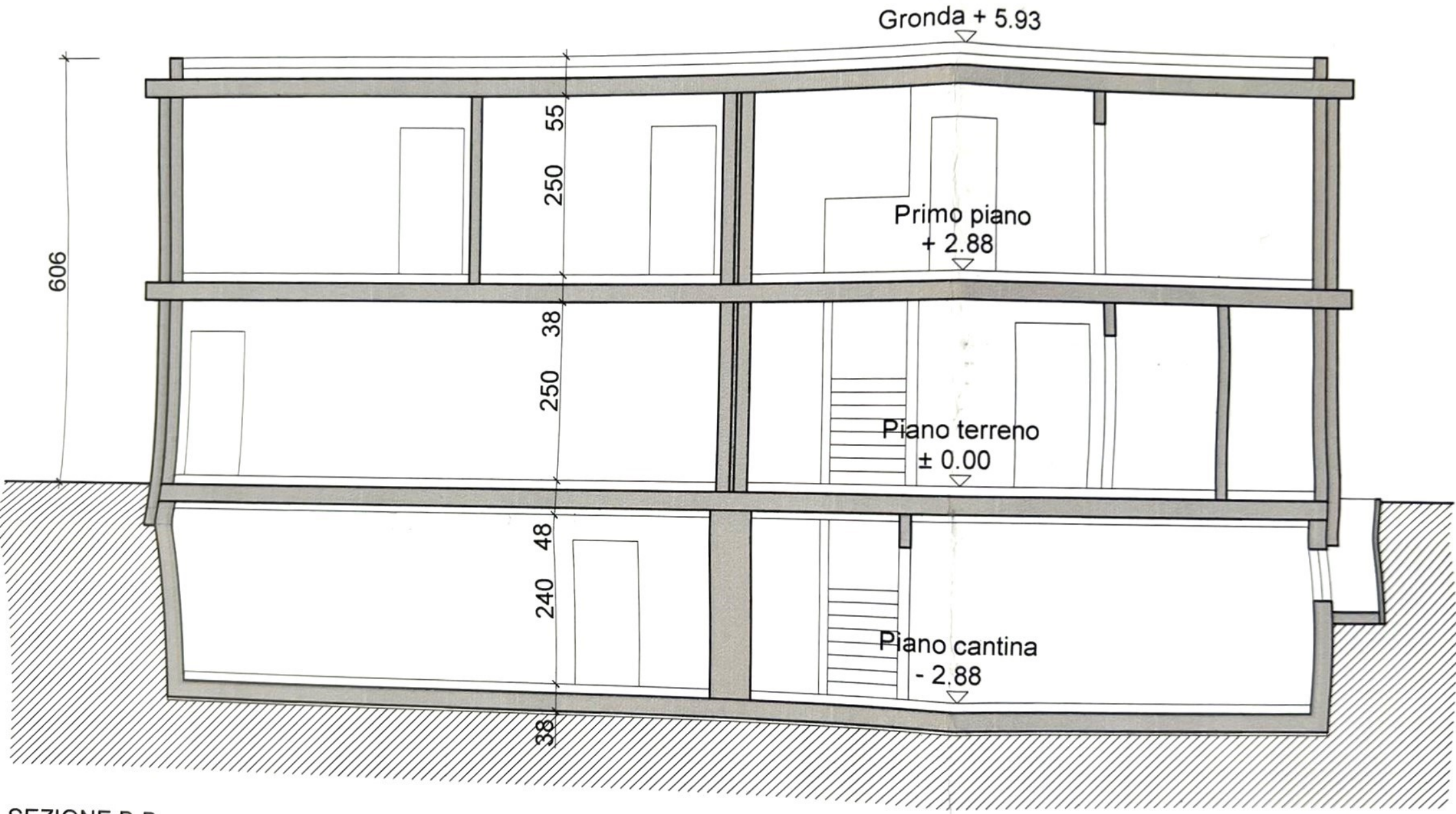


FACCIATA NORD

1:100



SEZIONE A-A



SEZIONE B-B