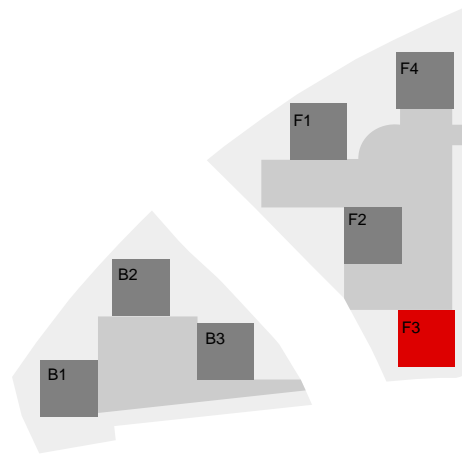


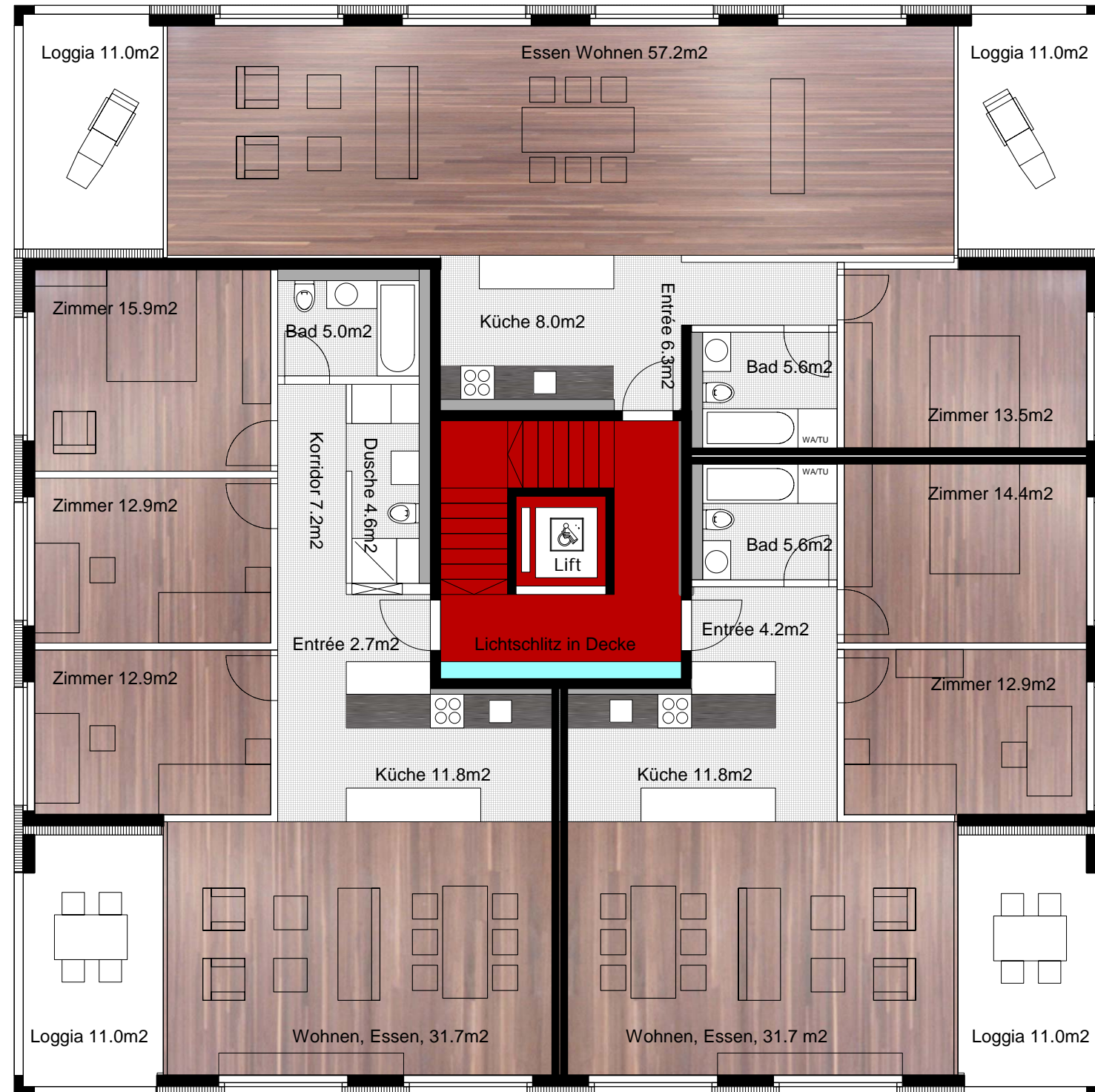
SEKTOR F3

3 1/2 - Zimmer Loftwohnung 90.6m2
 Loggias 22.0m2

GRUNDRISS-TYP4
 EG - 5.OG



1	- 4 1/2 - Zimmerwohnung Loggia	105 m2 11 m2
1	- 3 1/2 - Loftwohnung Loggia	90 m2 22 m2
1	- 3 1/2 - Zimmerwohnung Loggia	80 m2 11 m2



MST. 1:100



4 1/2 - Zimmer Wohnung 104.7m2
 Loggia 11.0m2

3 1/2 - Zimmer Wohnung 79.8m2
 Loggia 11.0m2