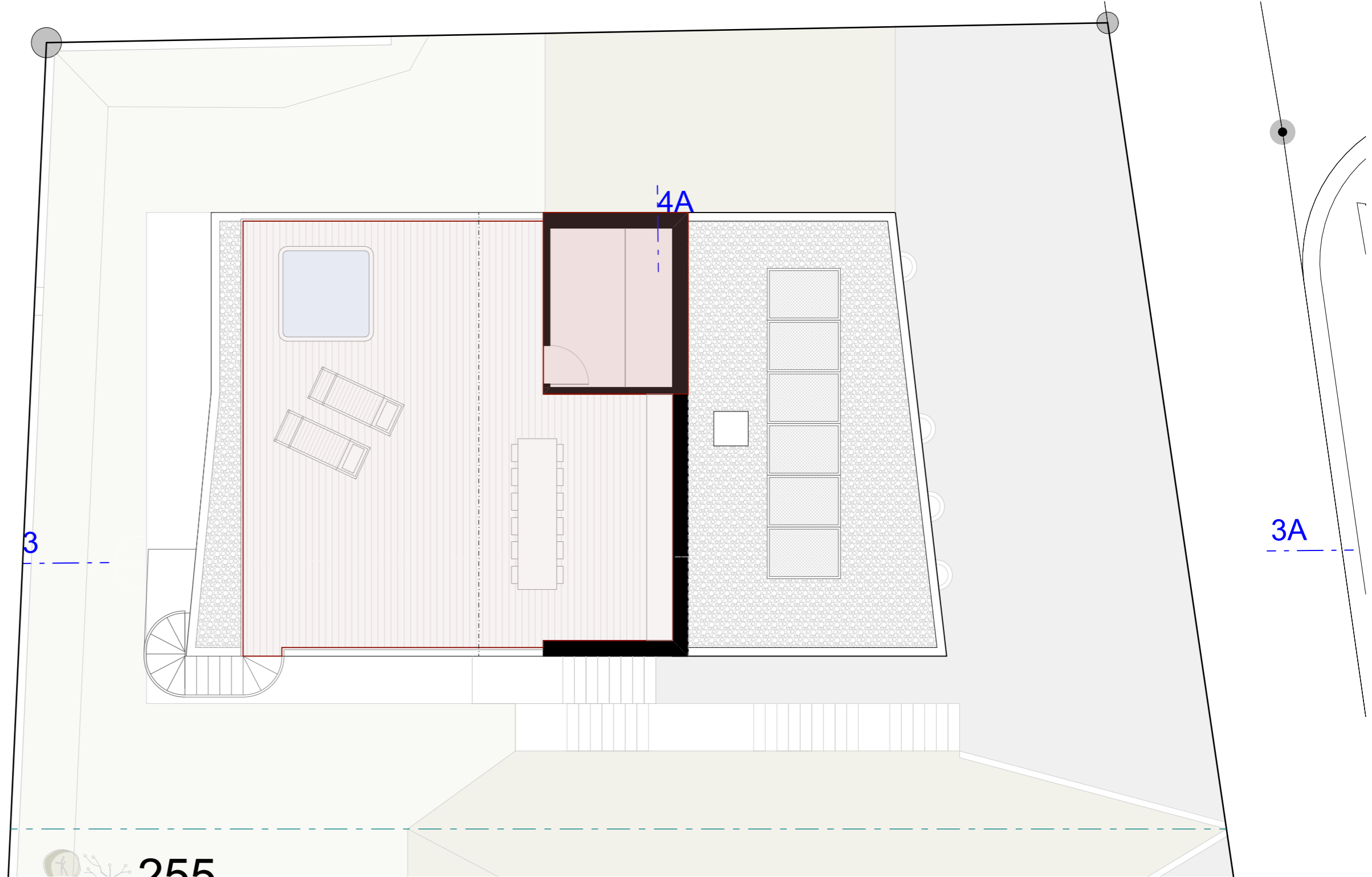


01



	PPP	mq appartamento	mq terrazza	mq giardino	mq cantina	n. posteggio	mq totali <small>mq appartamento + terrazza 50% + giardino 20% (se <100mq); giardino 10% (se >100mq) + cantina 50%</small>
Appartamento 1	01	106.5 mq	32.5 mq	136.5 mq	47.0 mq	2	159.9 mq
Appartamento 2	02	104.0 mq	94.0 mq	-	18.5 mq	2	160.25 mq