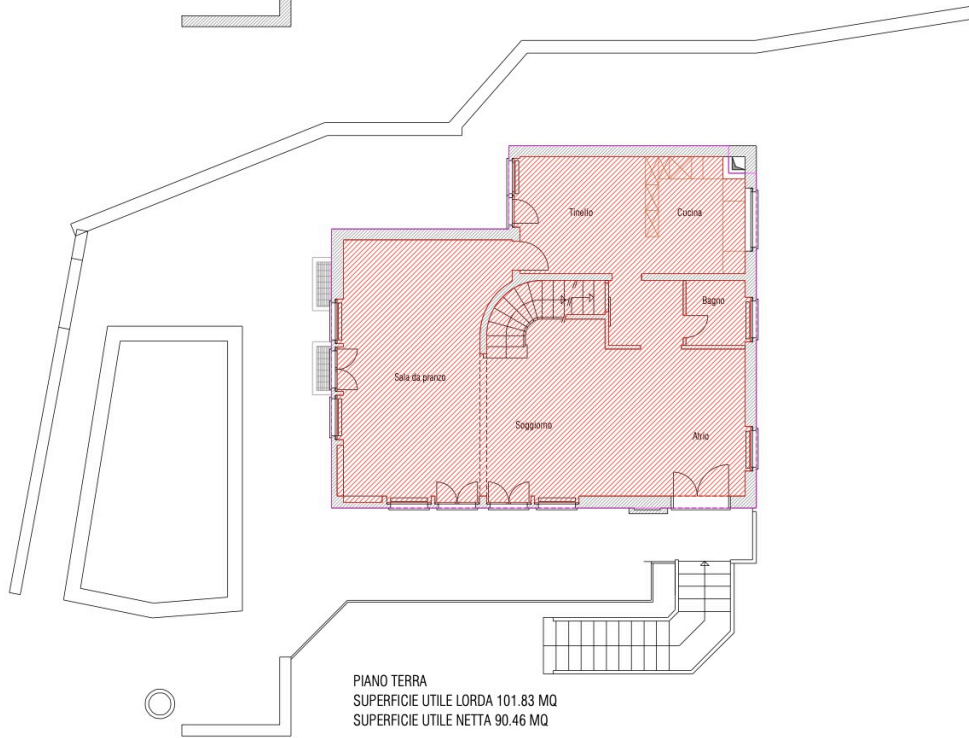
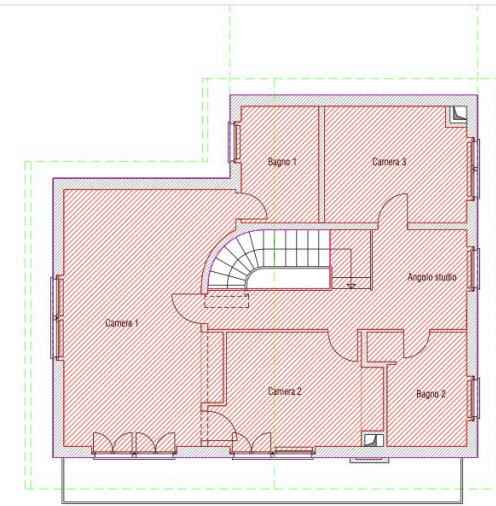


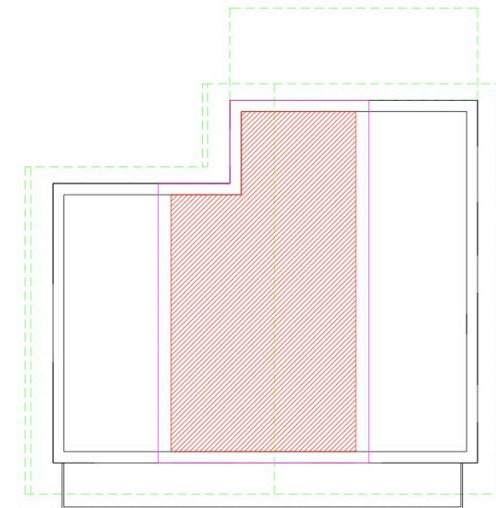
PIANO SEMINTERRATO
 SUPERFICIE UTILE LORDA 66.94 MQ
 SUPERFICIE UTILE NETTA 54.09 MQ



PIANO TERRA
 SUPERFICIE UTILE LORDA 101.83 MQ
 SUPERFICIE UTILE NETTA 90.46 MQ



PIANO PRIMO
 SUPERFICIE UTILE LORDA 97.15 MQ
 SUPERFICIE UTILE NETTA 82.87 MQ



PIANO SECONDO
 SUPERFICIE UTILE LORDA 51.47 MQ
 SUPERFICIE UTILE NETTA 41.72 MQ

Rilievo SUL esistente
 Casa a Lopagno 267
 Terreno 1170, edificabile 909, bosco 261
 SUL possibile 454.50 mq, SUL edificata 317.39 mq, SUL rimanente 137.11 mq