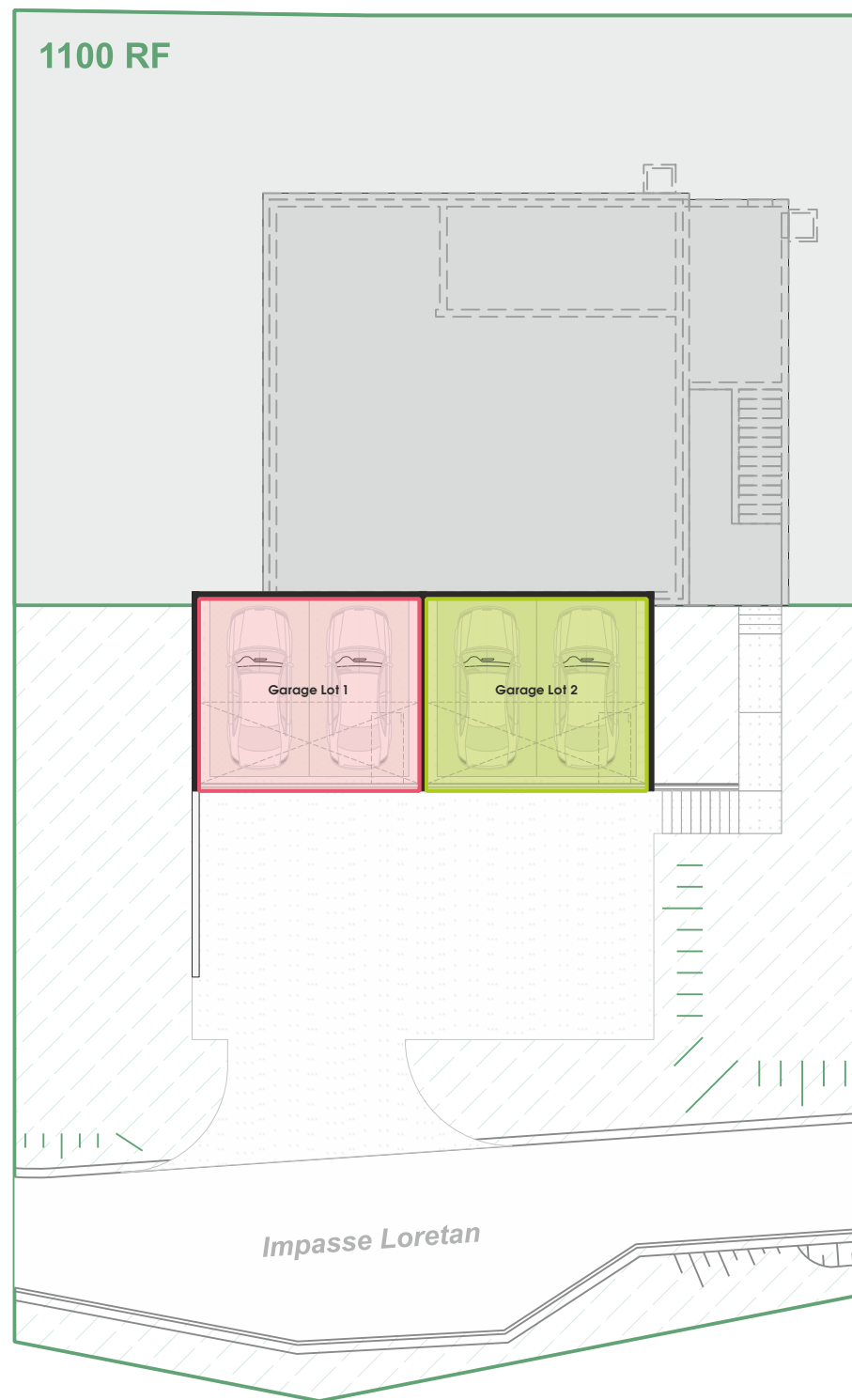
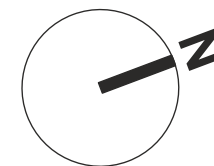


**PLANS PPE**  
**NIVEAU GARAGES (R -1)**  
Echelle 1:200e / format A4  
Impasse Loretan 4  
Commune de Crésuz (FR)  
Article 1100 RF  
version v1.0 (12-05-2026)



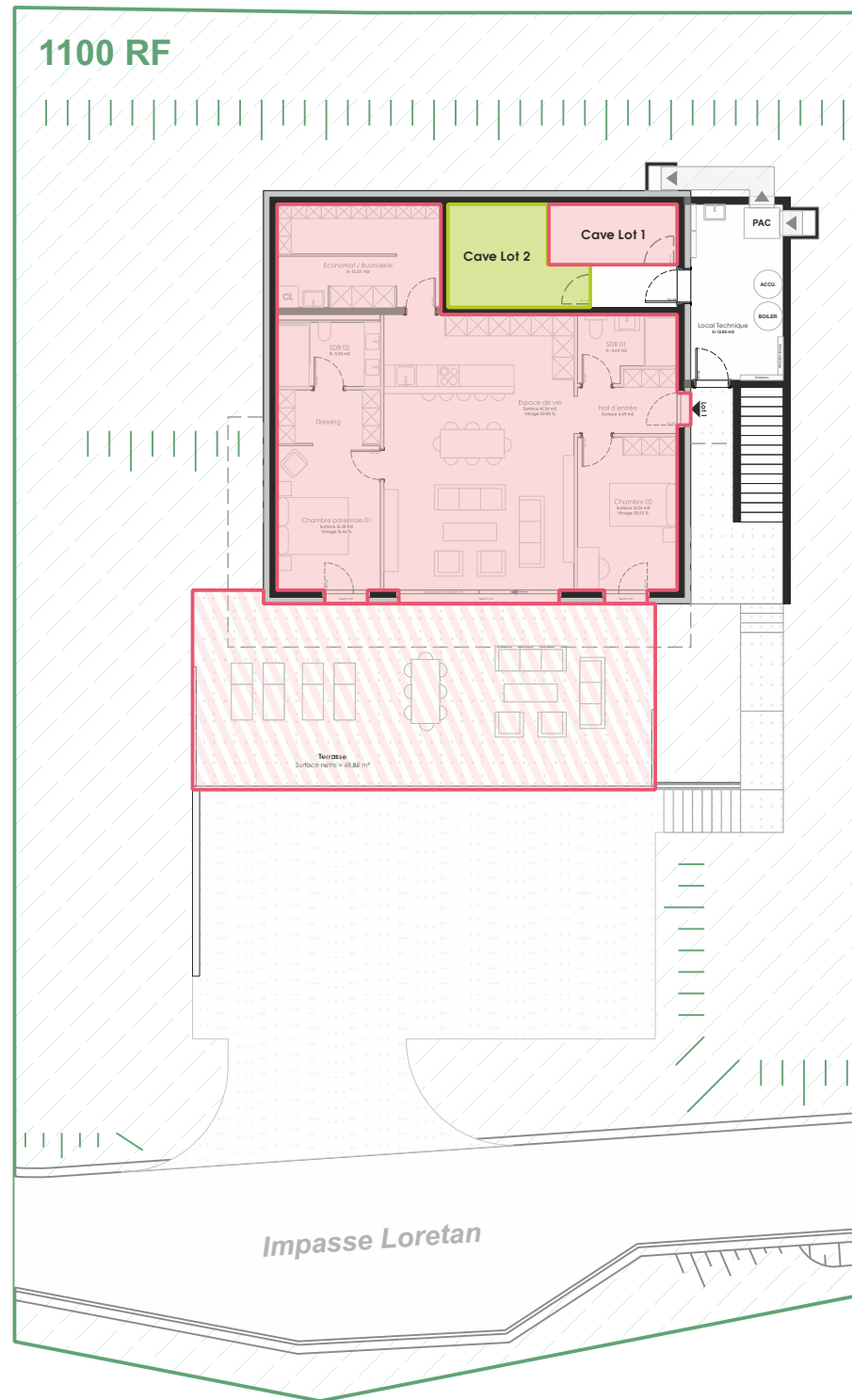
**Lot n° 1 : 1100-1 PPE**  
Appartement n°1 / 3.5 pièces  
Surface = 104.24  
Terrasse 1/3 = 22.95  
Cave = 1/10 = 0.61  
Garage 1/10 = 3.35  
Quote-part = 383 / 1000e

**Lot n° 2 : 1100-2 PPE**  
Appartement duplex n°2 / 5.5 pièces  
Surface = 174.04  
Terrasse 1/3 = 28.32  
Cave 1/10 = 0.95  
Garage 1/10 = 3.35  
Jardin 1/10 = 4.44  
Quote-part = 617 / 1000e



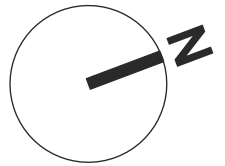
**PLANS PPE**  
**NIVEAU REZ-DE-CHAUSSÉE (R0)**

Echelle 1:200e / format A4  
Impasse Loretan 4  
Commune de Crésuz (FR)  
Article 1100 RF  
version v1.0 (12-05-2026)



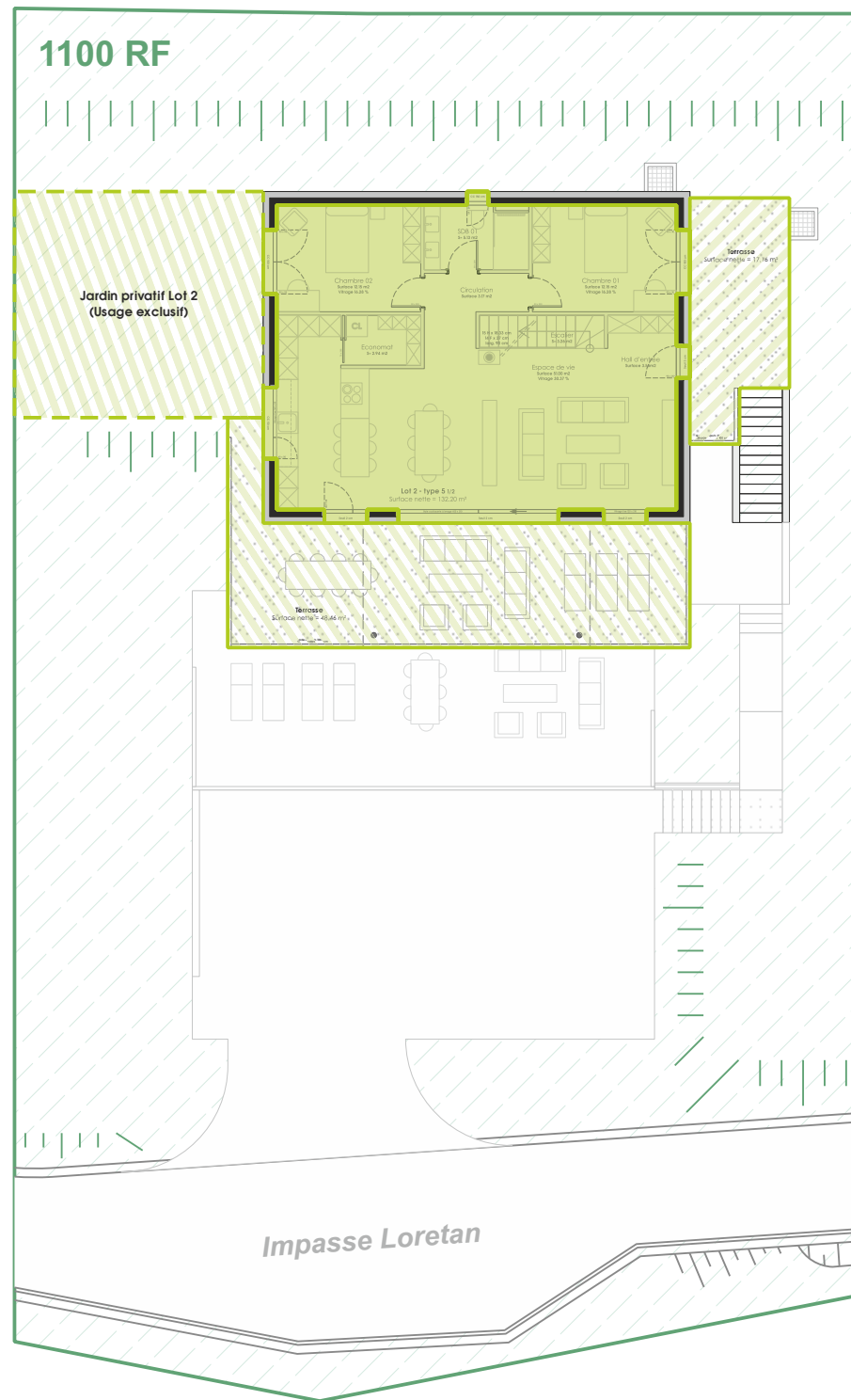
**Lot n° 1 : 1100-1 PPE**  
Appartement n°1 / 3.5 pièces  
Surface = 104.24  
Terrasse 1/3 = 22.95  
Cave = 1/10 = 0.61  
Garage 1/10 = 3.35  
Quote-part = 383 / 1000e

**Lot n° 2 : 1100-2 PPE**  
Appartement duplex n°2 / 5.5 pièces  
Surface = 174.04  
Terrasse 1/3 = 28.32  
Cave 1/10 = 0.95  
Garage 1/10 = 3.35  
Jardin 1/10 = 4.44  
Quote-part = 617 / 1000e



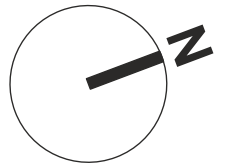
**PLANS PPE**  
**NIVEAU ETAGE (R1)**

Echelle 1:200e / format A4  
Impasse Loretan 4  
Commune de Crésuz (FR)  
Article 1100 RF  
version v1.0 (12-05-2026)

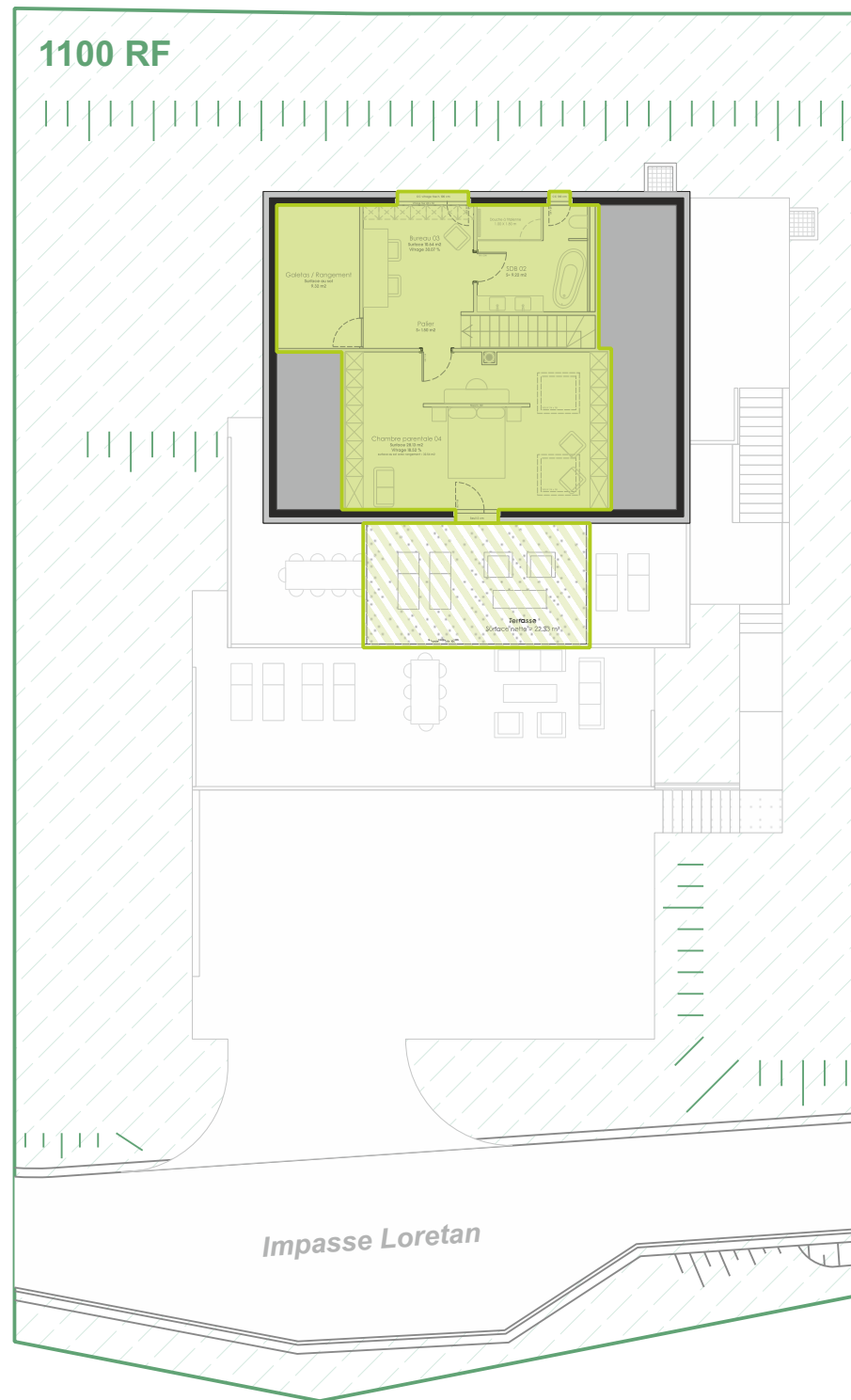


**Lot n° 1 : 1100-1 PPE**  
Appartement n°1 / 3.5 pièces  
Surface = 104.24  
Terrasse 1/3 = 22.95  
Cave 1/10 = 0.61  
Garage 1/10 = 3.35  
Quote-part = 383 / 1000e

**Lot n° 2 : 1100-2 PPE**  
Appartement duplex n°2 / 5.5 pièces  
Surface = 174.04  
Terrasse 1/3 = 28.32  
Cave 1/10 = 0.95  
Garage 1/10 = 3.35  
Jardin 1/10 = 4.44  
Quote-part = 617 / 1000e



**PLANS PPE**  
**NIVEAU COMBLES (R2)**  
Echelle 1:200e / format A4  
Impasse Loretan 4  
Commune de Crésuz (FR)  
Article 1100 RF  
version v1.0 (12-05-2026)



**Lot n° 1 : 1100-1 PPE**  
Appartement n°1 / 3.5 pièces  
Surface = 104.24  
Terrasse 1/3 = 22.95  
Cave 1/10 = 0.61  
Garage 1/10 = 3.35  
Quote-part = 383 / 1000e

**Lot n° 2 : 1100-2 PPE**  
Appartement duplex n°2 / 5.5 pièces  
Surface = 174.04  
Terrasse 1/3 = 28.32  
Cave 1/10 = 0.95  
Garage 1/10 = 3.35  
Jardin 1/10 = 4.44  
Quote-part = 617 / 1000e

