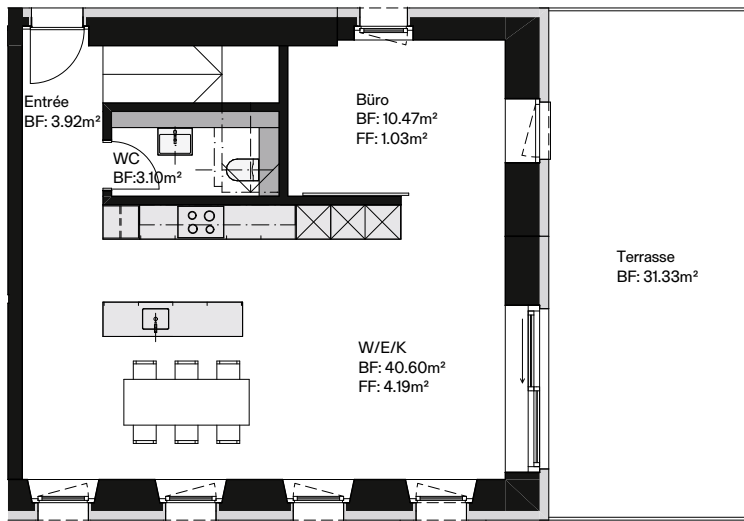
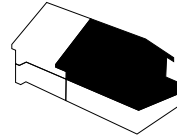


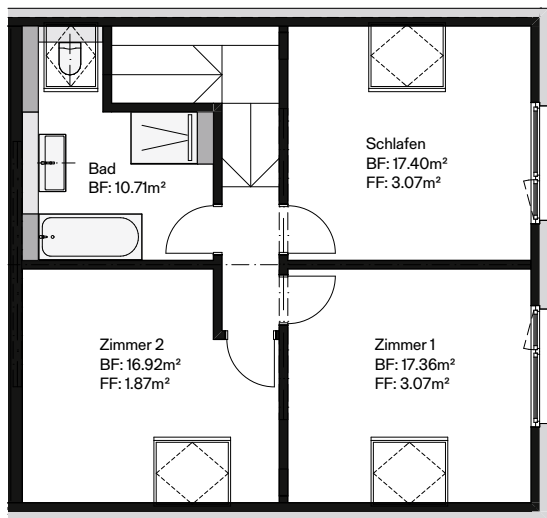
# Grundrisse A2026

Bauernhaus BH\_03 OG/DG

Geschoss	OG/DG
Grösse, NWF	5½-Zimmer, 120,5 m <sup>2</sup>
Terrasse/Balkon	31,5 m <sup>2</sup>
Keller	8,3 m <sup>2</sup>



Obergeschoss



Dachgeschoss



# A2026

Projekt «A2026» Allmendstrasse 80, 2540 Grenchen  
[moving@a2026.ch](mailto:moving@a2026.ch) | [a2026.ch](http://a2026.ch) | T. +41 32 378 10 20