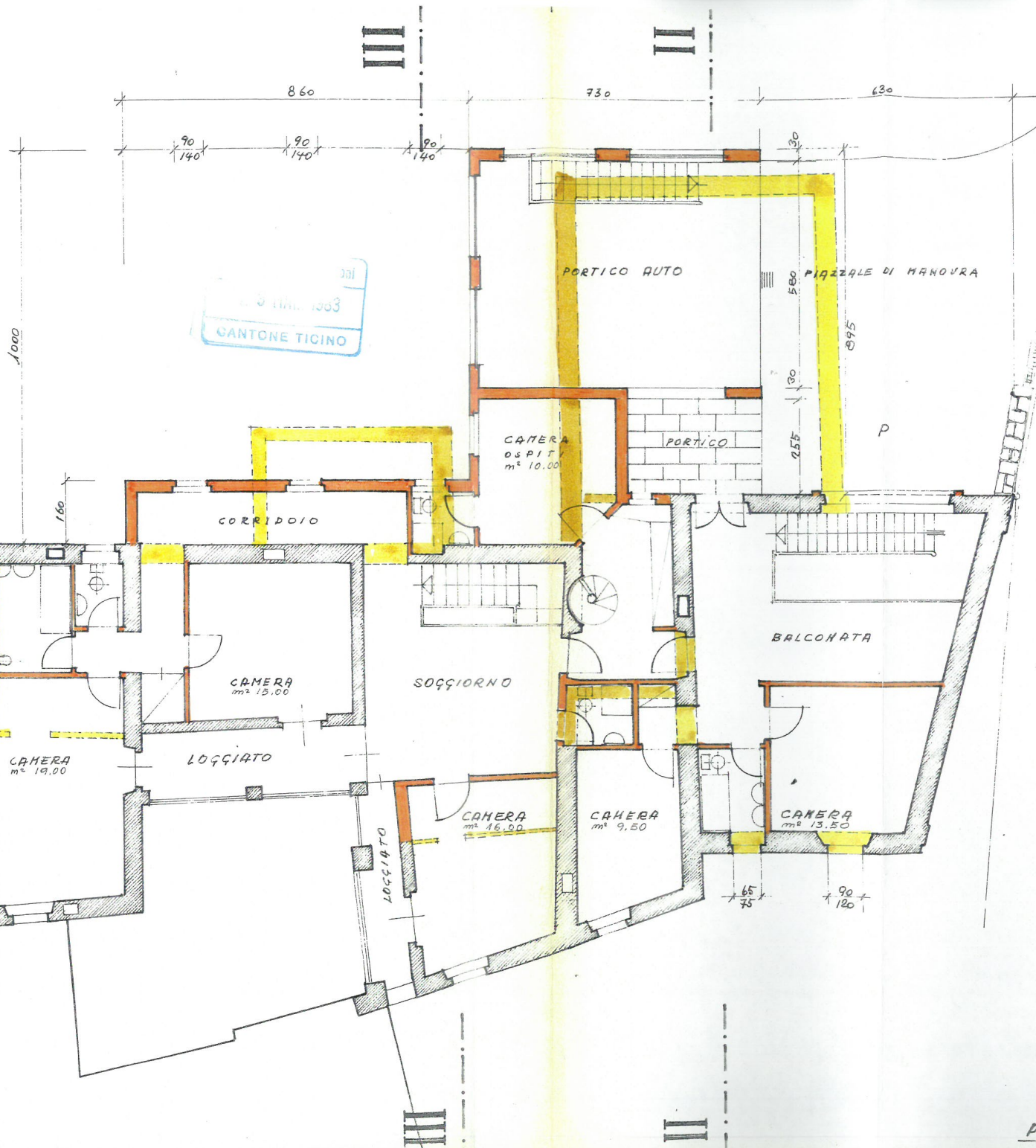
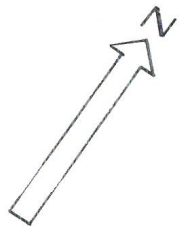


Elustig

810-3

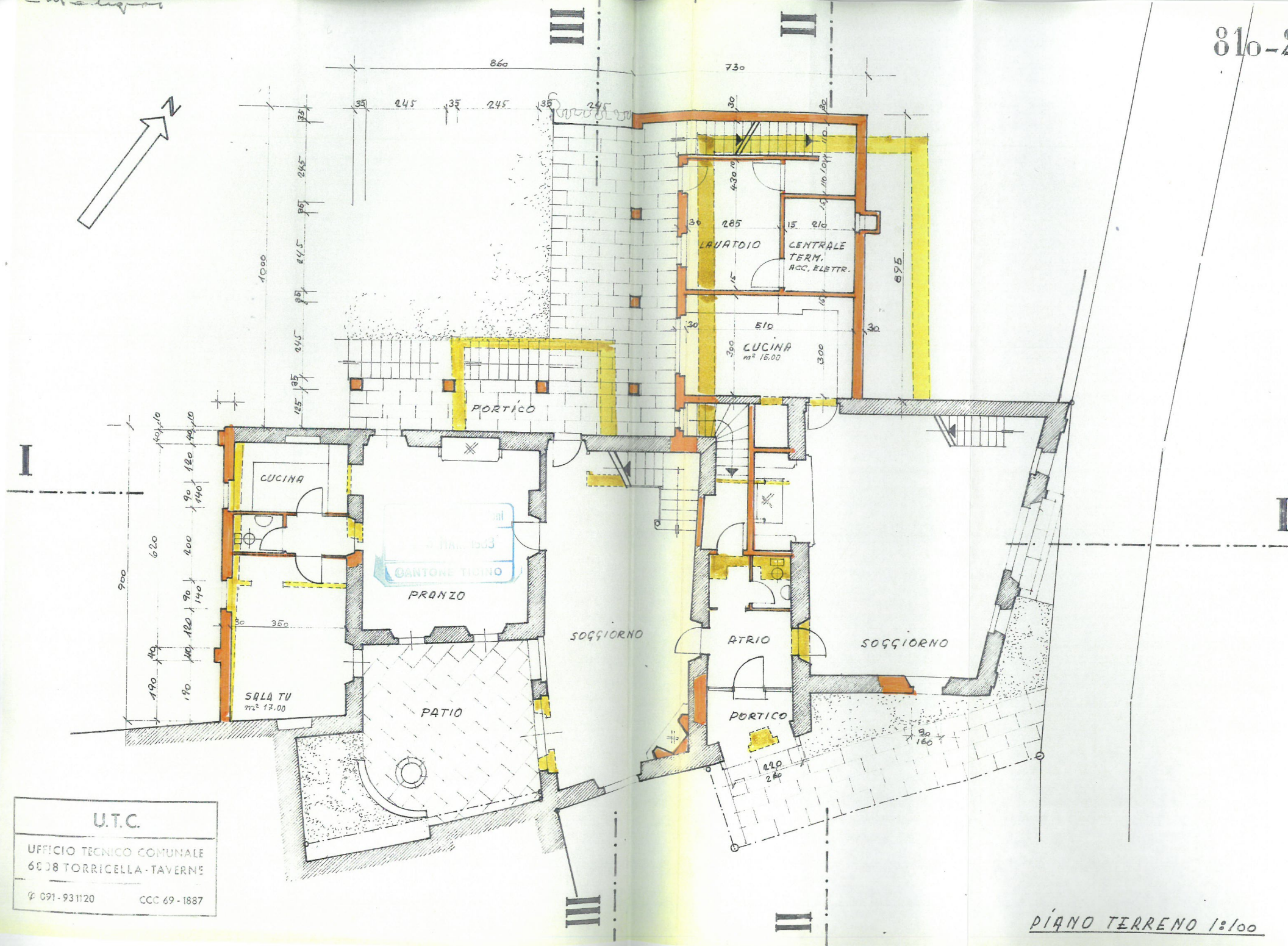


001
 1983
 CANTONE TICINO

STRADA COMUNALE

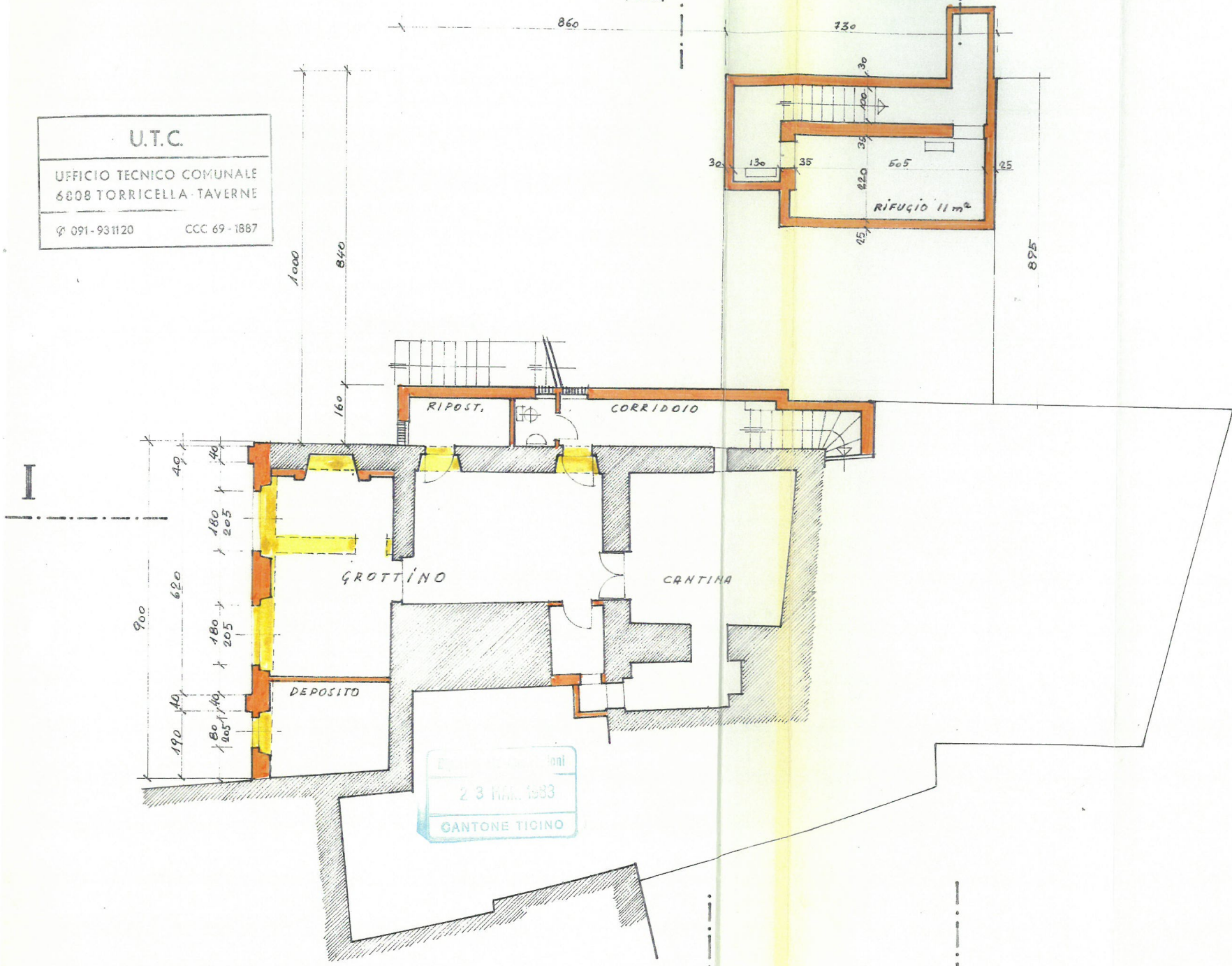
U.T.C.
 UFFICIO TECNICO COMUNALE
 6803 TORRICELLA TAVIRN.
 ☎ 091-931120 CCC L9-1687

PRIMO PIANO 18/00



U.T.C.
 UFFICIO TECNICO COMUNALE
 6008 TORRICELLA-TAVERNE
 ☎ 091-931120 CCC 69-1887

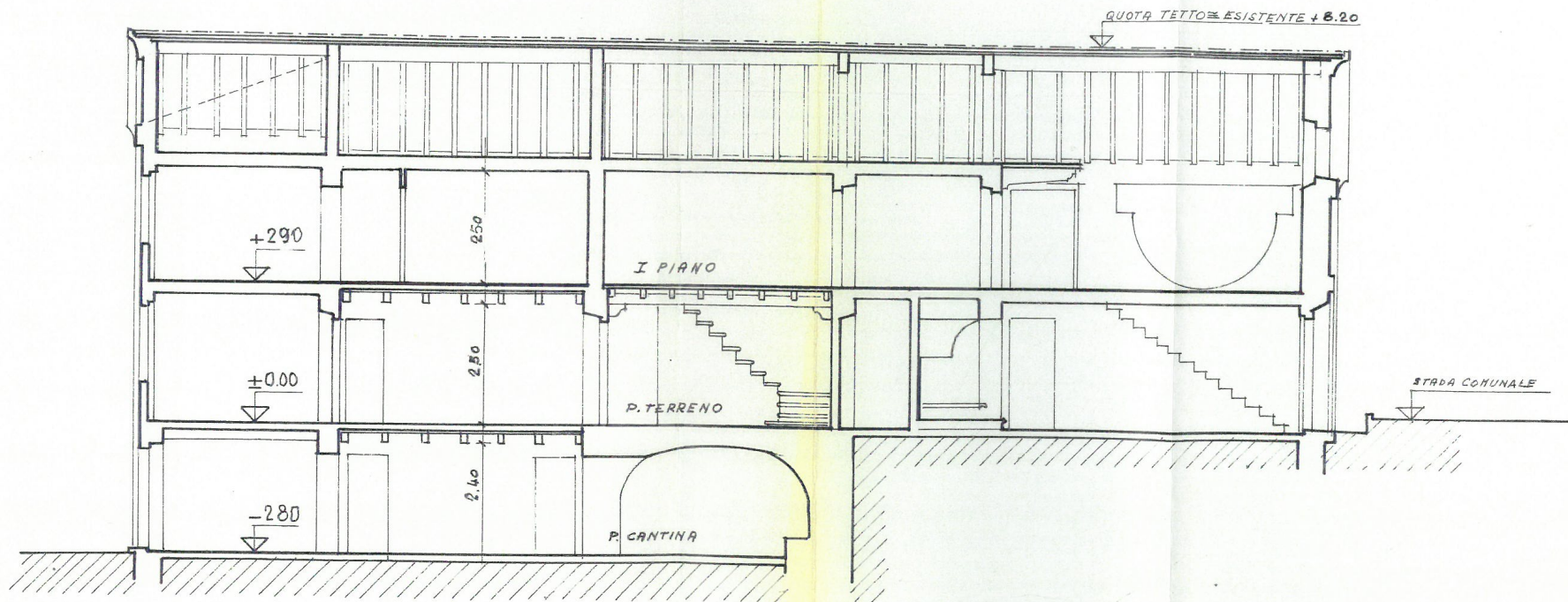
U.T.C.	
UFFICIO TECNICO COMUNALE	
6808 TORRICELLA TAVERNE	
☎ 091-931120	CCC 69-1887



Dipartimento di Architettura
 23 MAR 1983
 CANTONE TICINO

E. M. ...

U.T.C.
UFFICIO TECNICO COMUNALE 6808 TORRICELLA-TAVERNE
☎ 091-931120 CCC 69-1887



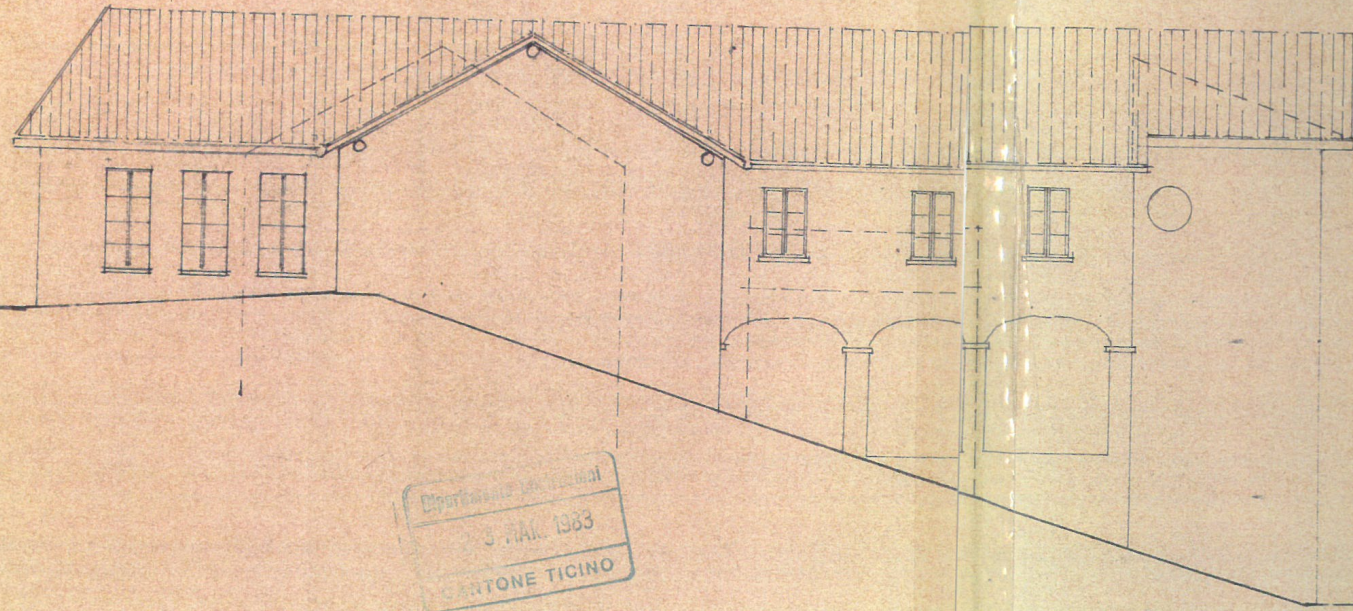
Dipartimento Costruzioni
23 MAR. 1983
CANTONE TICINO

I:I

VARIANTE

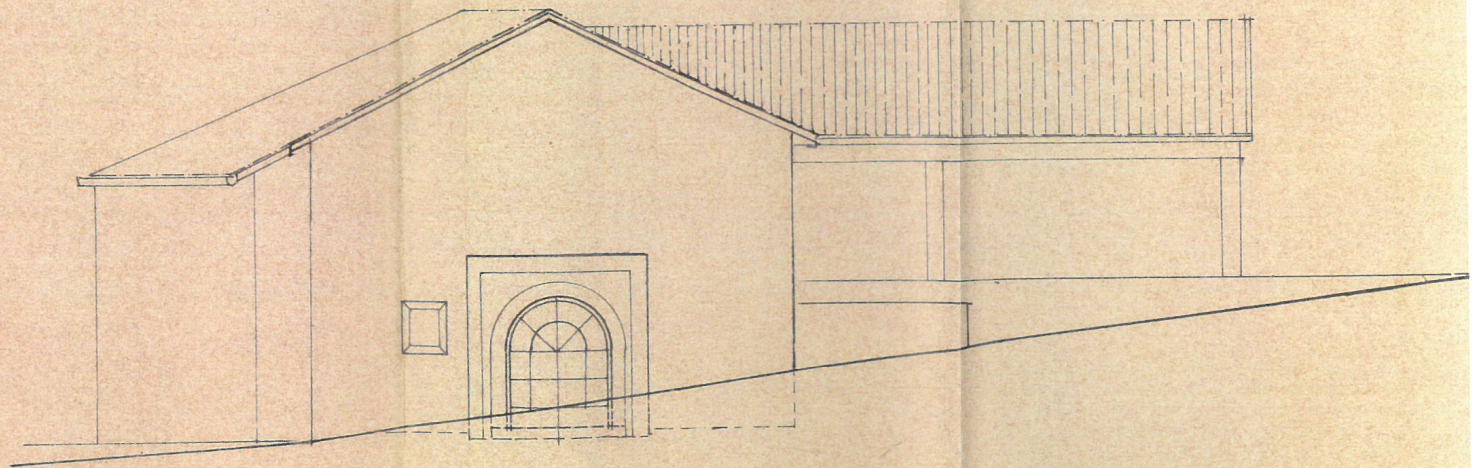
4 MAR. 1983

UTC
UFFICIO TECNICO COMUNALE
6008 TORRICELLA TAVERNE
☎ 091-931120 CCC 69-1887



UFFICIO TECNICO COMUNALE
5 MAR. 1983
CANTONE TICINO

NORD-OVEST



NORD-EST

VARIANTE 4.03.83.

4

VARIANTE

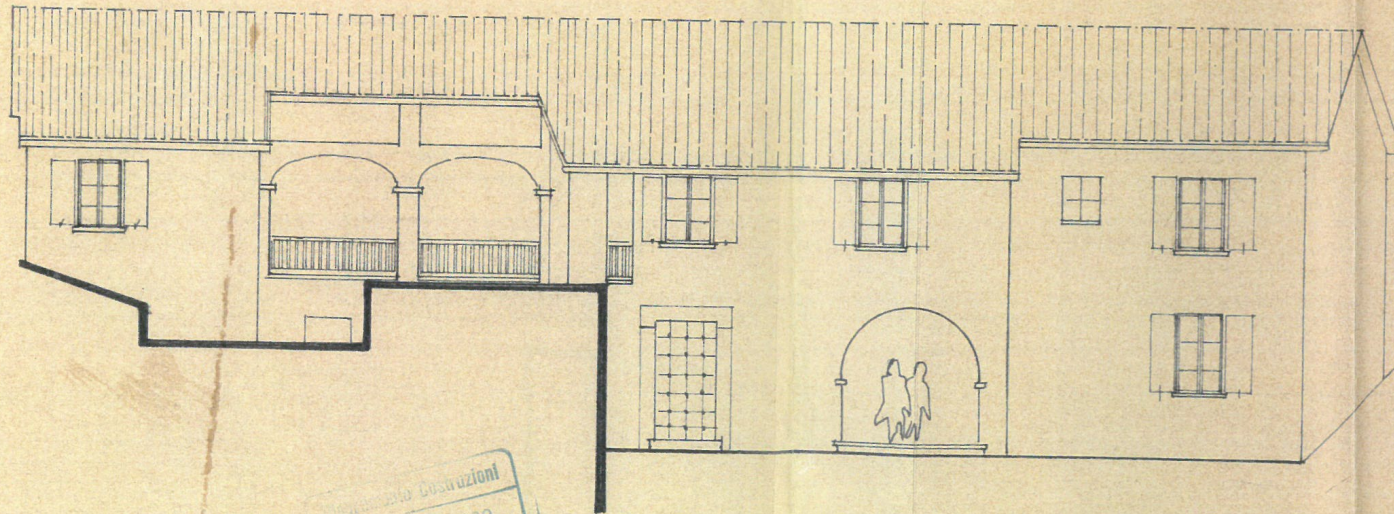
4 MAR. 1983

U.T.C.

UFFICIO TECNICO COMUNALE
08 TORRICELLA-TAVERNE

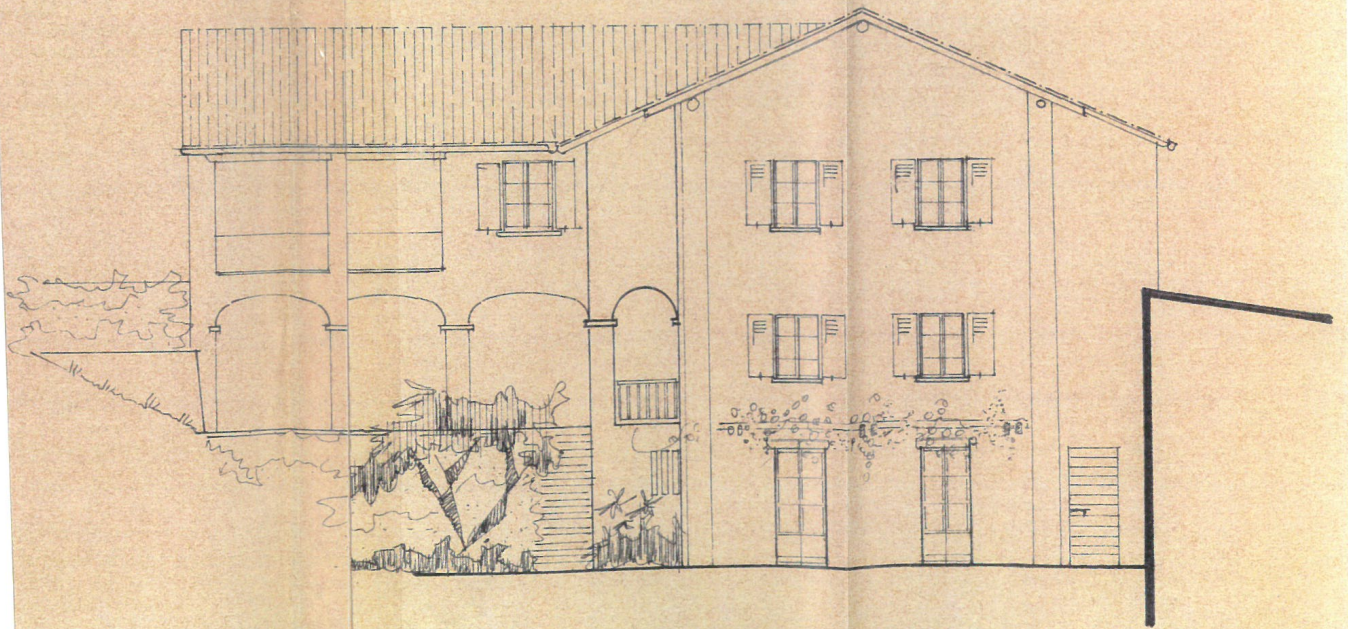
091-90-1120

CCC 69-1887



Ufficio Costruzioni
23 MAR. 1983
CANTONE TICINO

SUD-EST



SUD-OUEST