

447.01

Chantemerle 39

Granges-Paccot

2030 B

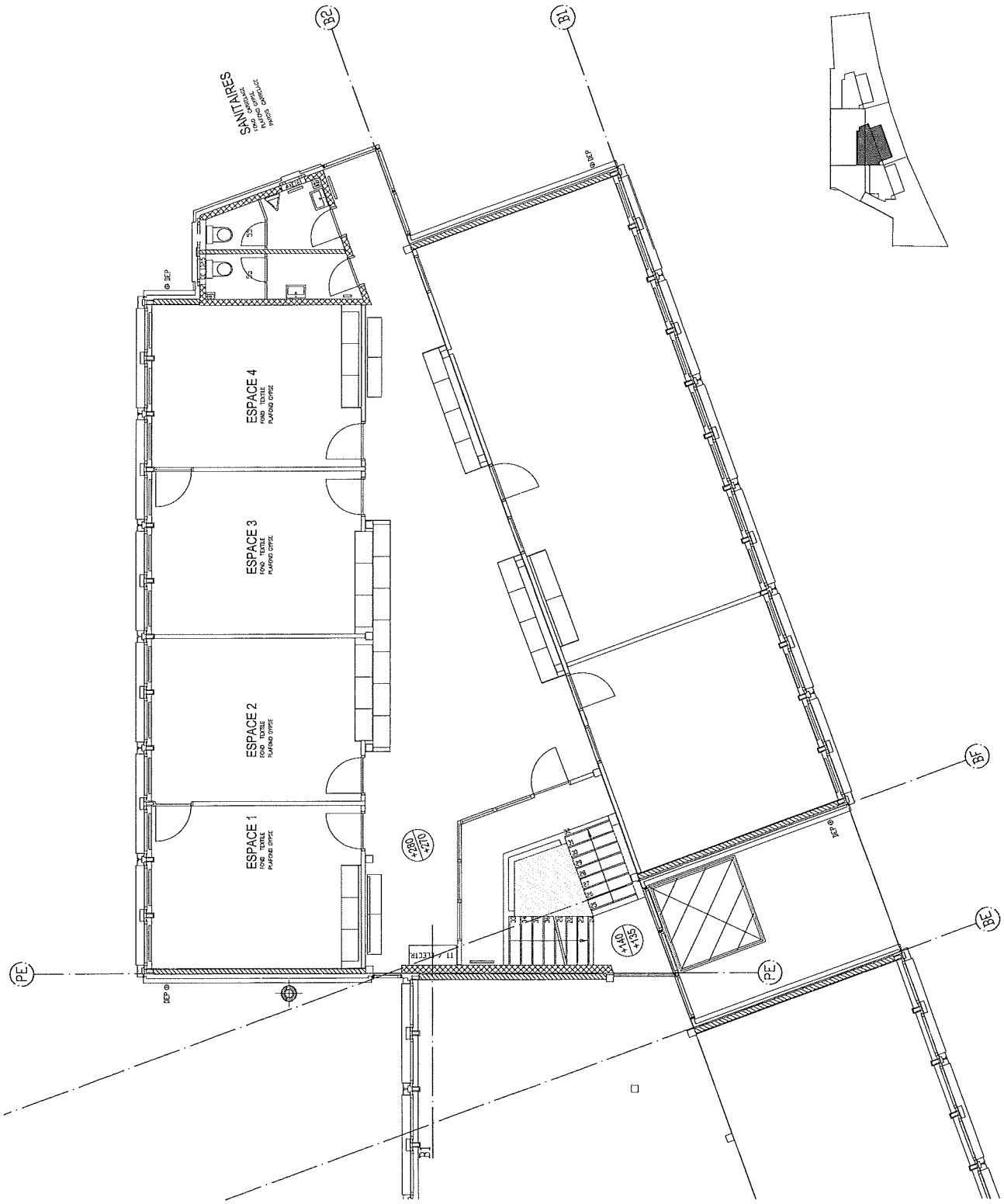
1/100

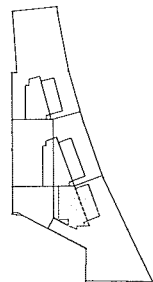
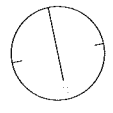
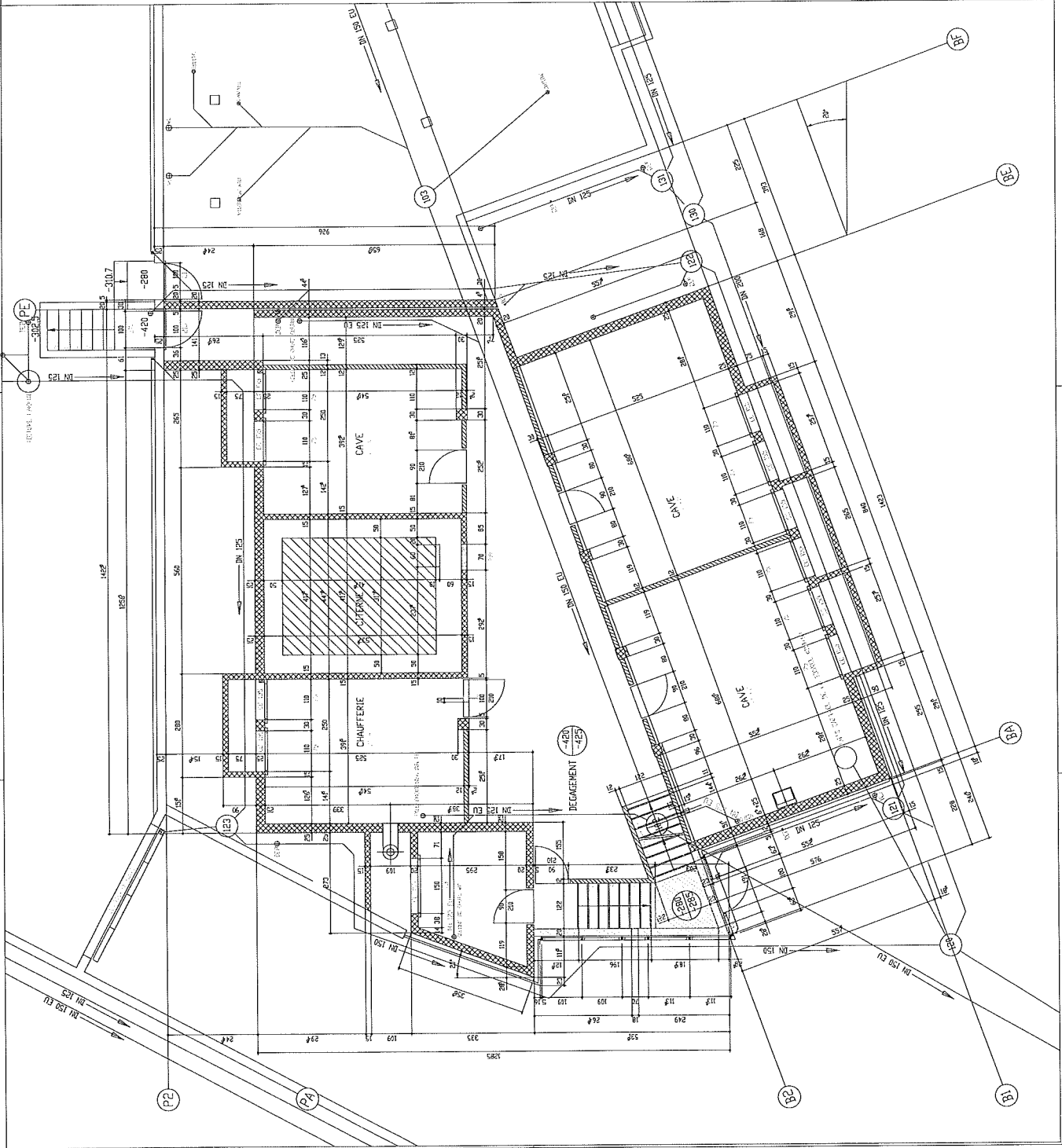
1ER ETAGE BÂT. 2

25.09.2012

SAPCO

CASE POSTALE 1414
CH-1701 FRIBOURG
TELEPHONE 026/460.26.
TELEFAX 026/460.26.
e-mail: sapco@sapco.ch
http://www.sapco.ch





USCS 447.1

PHASE FINALE

GRANGES-PACCOT

CONSTRUCTION D'UN IMMEUBLE ADMINISTRATIF 'LA KROTSETA'

R. REVELER ARCHITECTE ET S

PLAN 301-H

1/50

01.02.91	A
02.02.91	B
03.02.91	C
04.02.91	D
05.02.91	E
06.02.91	F
07.02.91	G
08.02.91	H

CAVE POSTALE 123
 CASE POSTALE 124
 TELEPHONE 037/264616
 TELEFAX 037/264588

SAPCO

PLANNINGEURS GÉNÉRALX - ARCHITECTES - ENTREPRISE GÉNÉRALE